

Product datasheet for RC238126

CBY2 (NM_001286341) Human Tagged ORF Clone

Product data:

| | |
|--------------------------|--|
| Product Type: | Expression Plasmids |
| Product Name: | CBY2 (NM_001286341) Human Tagged ORF Clone |
| Tag: | Myc-DDK |
| Symbol: | CBY2 |
| Synonyms: | NURIT; SPERT |
| Vector: | pCMV6-Entry (PS100001) |
| E. coli Selection: | Kanamycin (25 ug/mL) |
| Cell Selection: | Neomycin |
| ORF Nucleotide Sequence: | >RC238126 representing NM_001286341 Red=Cloning site Blue=ORF Green=Tags(s) |

TTTTGTAATACGACTCACTATAGGGCGCCGGAATTCGTCGACTGGATCCGGTACCGAGGAGATCTGCC
GCCGCGATCGCC

ATGTCACCTCTGGAATGTTCTGAGTGTTTTGGTGACCACTTCTGCATAGGACCTATACCTGGCACTCA
CATTGAGGGGCACAGCCGAACCTTCCCGAGGCTCCACAATTGTACAGCACCCCTCGCTGCGCGCAGCA
GGCCGCGCTGCCCGGCTGAGCCGAGGATGGCGAGCCAGCACTCTATCCACTGAACCGCTTCTCCTCC
GTGCCTTTAGACCCCATGGAGCGCCCATGTCCCAGGCCGACCTGGAGCTGGACTACAACCCGCCGCGGG
TGCAGCTCAGCGACGAGATGTTCTGTTCCAGGACGGGCGCTGGGTAAATGAGAAGTCCGCGCTGCAGTC
TCCCTACTTCTCCCATCCGCTCCTTCCACCACAAGTGCACCACAAGAGGCTGGCCAAGGAGTGCATG
CTGCAGGAGGAGAACAAGTCTCTGCGGGAGGAGAACAAGGCCCTGCGCGAGGAGAACCGGATGCTCAGCA
AGGAGAACAAGATCCTACAGGCTTCTGGGAGGAGCACAAGGCCCTCGCTGGGCCGAGAGGAGCCGGGC
CCCCTCGCCACTGCTGCACAAAGACAGCGCGTCCCTGGAGGTGGTGAAGAAGGACCACGTCGCCCTGCAG
GTGCCCCGTGGCAAGGAGGACAGCACCTGCAGTCTCCTCGGGAGGAGAATCGCGCGTGCAGCAGTGC
TGGAGCAGAAACAGGCCCTACTGGGCGCAGGCAGAGGACACGGCCGCCCTGCCGAGAAAGCAAGCCCGC
CCCCTCACCCACGAGGAGCCCTGCAGCCCGGGCTGCTGCAGGACCAGGCTCCGGCTCTCCTCCCGC
TTCGAGGAGCCCAAGGGCTCCGGCCCGCAGGAGGACTCCAAGGAGTGCAGCGCTGCAGGAGATGG
TCAGCAACATGTCCGGGCCCTCCGGGAGGAGGAGGCAAGGTGGGCCCGGGCTGCCGACGGTGCCA
GCCCTGCAGTGTGAGAGAGATGAGGAGGCGCTGCAGGCCCTGCTCAAGGAGAACCAGGCTCCTGCAG
GAGGAGAACAGGACCCTGCAGGTGCTACGGGCAGAGCACAGGGGCTTCCAGGAGGAGAACAAGGCCCTGT
GGGAGAACAACAAGCTGAAGTGCAGCAGAAGTGGTCATTGACACCGTGACCGAGGTACCGCGCGCAT
GGAAATGCTCATCGAGGAGCTCTACGCCTTCATGCCGGCCAGGAGCCAGGACCCCAAGAAGCCTAGCAGG
GTC

ACGCGTACGCGGCCGCTCGAGCAGAACTCATCTCAGAAGAGGATCTGGCAGCAAATGATATCCTGGATT
ACAAGGATGACGACGATAAGGTTTAA



[View online »](#)

Protein Sequence: >RC238126 representing NM_001286341
Red=Cloning site Green=Tags(s)

MSPLECESECFGDQLLHRTYTWQLTLRGTAEFPRLHNLYSTPRCAQQAALPRLSRRMASQHSYPLNRFSS
 VPLDPMERPMSQADLELDYNPPRVQLSDEMVFVQDGRWVNENCR LQSPYFSPSASFHHKLHHKRLAKECM
 LQEENKSLREENKALREENRMLSKENKILQVFWEEHKASLGREE SRAPSPLLHKDSASLEVVKKDHVALQ
 VPRGKEDSTLQLLREENRALQQLLEQKQAYWAQEDTAAPAEESKPAPSPHEEPCSPGLLQDQGSGLSSR
 FECPKGPAPARQEDSKELRALRKMVSNMSGPSGEEEA KVG PGLPDGCQPLQLLREMRQALQALLKENRLQ
 EENRTLQVLRAEHRGFQEENKALWENK LKLQKQLVIDTVTEVTARMEMLIEEL YAFMPARSQDPKKPSR
 V

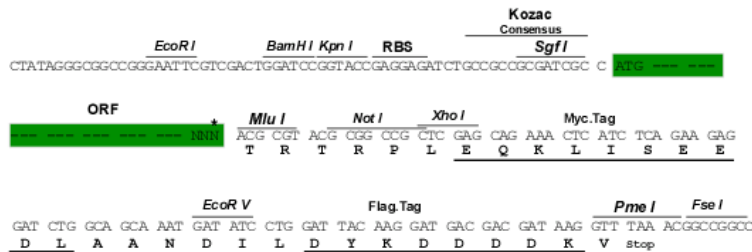
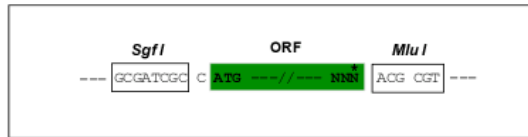
TRTRPLEQKLISEEDLAANDILDYKDDDDKV

Restriction Sites:

SgfI-MluI

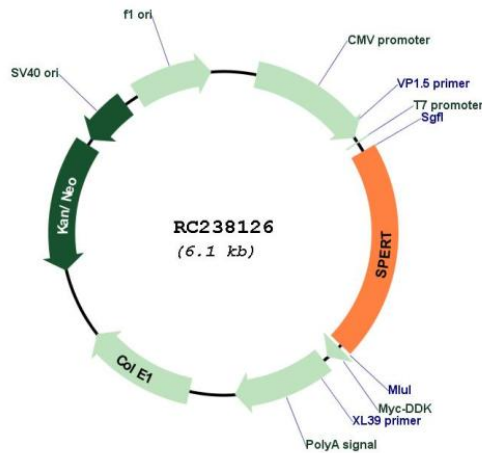
Cloning Scheme:

Cloning sites used for ORF Shuttling:



* The last codon before the Stop codon of the ORF

Plasmid Map:



ACCN: NM_001286341

| | |
|-------------------------------|---|
| ORF Size: | 1263 bp |
| OTI Disclaimer: | The molecular sequence of this clone aligns with the gene accession number as a point of reference only. However, individual transcript sequences of the same gene can differ through naturally occurring variations (e.g. polymorphisms), each with its own valid existence. This clone is substantially in agreement with the reference, but a complete review of all prevailing variants is recommended prior to use. More info |
| OTI Annotation: | This clone was engineered to express the complete ORF with an expression tag. Expression varies depending on the nature of the gene. |
| Components: | The ORF clone is ion-exchange column purified and shipped in a 2D barcoded Matrix tube containing 10ug of transfection-ready, dried plasmid DNA (reconstitute with 100 ul of water). |
| Reconstitution Method: | <ol style="list-style-type: none">1. Centrifuge at 5,000xg for 5min.2. Carefully open the tube and add 100ul of sterile water to dissolve the DNA.3. Close the tube and incubate for 10 minutes at room temperature.4. Briefly vortex the tube and then do a quick spin (less than 5000xg) to concentrate the liquid at the bottom.5. Store the suspended plasmid at -20°C. The DNA is stable for at least one year from date of shipping when stored at -20°C. |
| RefSeq: | NM_001286341.2 |
| RefSeq Size: | 1556 bp |
| RefSeq ORF: | 1266 bp |
| Locus ID: | 220082 |
| UniProt ID: | Q8NA61 |
| Cytogenetics: | 13q14.13 |
| MW: | 48.9 kDa |