

## Product datasheet for RC238124

### SLC35A2 (NM\_001282651) Human Tagged ORF Clone

#### Product data:

**Product Type:** Expression Plasmids  
**Product Name:** SLC35A2 (NM\_001282651) Human Tagged ORF Clone  
**Tag:** Myc-DDK  
**Symbol:** SLC35A2  
**Synonyms:** CDG2M; CDGX; UDP-Gal-Tr; UGALT; UGAT; UGT; UGT1; UGT2; UGTL  
**Vector:** pCMV6-Entry (PS100001)  
**E. coli Selection:** Kanamycin (25 ug/mL)  
**Cell Selection:** Neomycin  
**ORF Nucleotide Sequence:** >RC238124 representing NM\_001282651  
Red=Cloning site Blue=ORF Green=Tags(s)

TTTTGTAATACGACTCACTATAGGGCGGCCGGAATTCGTCGACTGGATCCGGTACCGAGGAGATCTGCC  
GCC**CGGATCGCC**

ATGGCAGCGGTTGGGGCTGGTGGTTCCACCGGGCGCCCGGGCCAGGGGCGGTTCCGCGGGTGCATTGG  
AGCCGGGGACCGCAGTCCGGAGTTGCTTCTCACTTGGGAGGAAGCCGAGGCGCTGGCCAGGGTTTGGC  
TCAGCCATTACCTGACACCTCAGTAAGGATTCCAGCTCACAGGCGCTGAAGTACATATCCCTAGCTGTG  
CTGGTGGTCCAGAATGCCTCCCTCATCCTCAGCATCCGCTACGCCGCAGGTTGCCAGGGACCGCTTCT  
TTGCCACCACTGCTGTGGTTCATGGCGGAAGTGCTCAAAGGTCTCACCTGCCTGCTGCTGCTCTTCGCACA  
GAAGAGGGGTAACGTGAAGCACCTGGTTCTTCTCCATGAGGCTGTCTGGTGCAGTATGTGGACACG  
CTCAAGCTCGCAGTGCCTCTCTCATCTACACCTTGCAAGTCCAGTATGTTGCCATCTCTAACC  
TACCAGCTGCCACTTCCAGGTGACATACCAGCTGAAGATCCTGACCACAGCGTGTCTCCGTGCTCAT  
GCTGAATCGCAGCCTTCCCGGCTGCAGTGGGCTCCCTGCTGCTCCTTCACTGGCGTCGCCATTGTC  
CAGGCACAGCAAGCCGGTGGGGAGGCCACGGCCACTGGATCAGAACCCTGGGCAGGCTGGCAGCCG  
TCGTGGCCTCCTGTCTCCTCCGCTTCGCAGGTGTCTACTTTGAGAAGATCCTCAAAGCAGCTCAGG  
CTCCGTGTGGCTGCGCAACTGCAACTGGGCTCTTCGGCACAGCACTGGGCTGGTGGGGCTCTGGTGG  
GCTGAGGGTACCGCGTGGCCACCCGTGGTTTCTTTTTGGGTACACACCTGCTGTCTGGGGCGTGGTGC  
TCAACCAGGCCTTCGGCGGGCTACTGGTGGCTGTGGTGTCAAGTACGCTGACAATATCCTCAAGGGCTT  
TGCCACCTCCCTGTCCATTGTGCTGTCCACTGTTGCCCTCATTGCCTCTTTGGCTTCCACGTGGACCCA  
TTATTTGCCCTTGGCGTGGACTCGTATTGGTGTGTCTACCTTACAGCCTTCCCGAGGTGCAGCCA  
AAGCCATAGCCTCTGCCTCTGCCTCCGCTCCGGGCCGCGTTACCAGCAGCCTCCGGGCAGCCACC  
ACCACCGCAGCTGTCTCCACCGTGGAGACCTCATCACGGAGCCCTTCTGCCAAAGTCAGTGTGGTG  
AAG

**ACGCGT**ACGCGGGCGCTCGAGCAGAACTCATCTCAGAAGAGGATCTGGCAGCAAATGATATCCTGGATT  
ACAAGGATGACGACGATAAGGTTTAA



[View online »](#)

**Protein Sequence:** >RC238124 representing NM\_001282651  
Red=Cloning site Green=Tags(s)

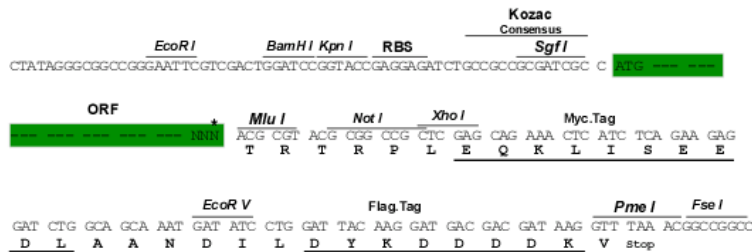
MAAVGAGGSTAAPGPGAVSAGALEPGTASAELLLTWEEAEARGQGLPQPLPDTSVRIPAHRRLKYISLAV  
 LVVQNASLILSIRYARTLPGRFFATTAVVMAEVLKGLTCLLLFAQKRGVVKHLVFLHEAVLVQYVDT  
 LKLAVPSLIYTLQNNLQYVAISNLPAAFTQVTYQLKILTTALFVLMNRSLSRLQWASLLLLFTGVAIV  
 QAQAGGGGPRPLDQNPAGLAAVVASCLSSGFAGVYFEKILKGS S GSVWLRNLQLGLFGTALGLVGLWW  
 AEGTAVATRGFFFGYTPAVWGVVNLNQA F GLLVAVVVKYADNILKGFATLSIVLSTVASIRLFGFHVDP  
 LFALGAGLVIGAVYLYSLPRGAAKAIASASASASGPCVHQPPGQPPPPQLSSHRGDLITEPFLPKSVLV  
 K

TRTRPLEQKLISEEDLAANDILDYKDDDDKV

**Restriction Sites:**  
**Cloning Scheme:**

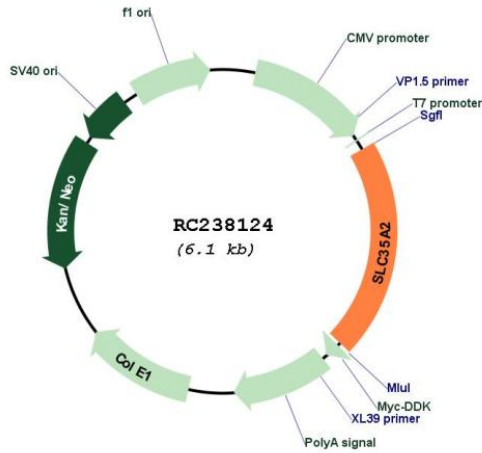
SgfI-MluI

Cloning sites used for ORF Shuttling:



\* The last codon before the Stop codon of the ORF

**Plasmid Map:**



**ACCN:** NM\_001282651

<b>ORF Size:</b>	1263 bp
<b>OTI Disclaimer:</b>	The molecular sequence of this clone aligns with the gene accession number as a point of reference only. However, individual transcript sequences of the same gene can differ through naturally occurring variations (e.g. polymorphisms), each with its own valid existence. This clone is substantially in agreement with the reference, but a complete review of all prevailing variants is recommended prior to use. <a href="#">More info</a>
<b>OTI Annotation:</b>	This clone was engineered to express the complete ORF with an expression tag. Expression varies depending on the nature of the gene.
<b>Components:</b>	The ORF clone is ion-exchange column purified and shipped in a 2D barcoded Matrix tube containing 10ug of transfection-ready, dried plasmid DNA (reconstitute with 100 ul of water).
<b>Reconstitution Method:</b>	<ol style="list-style-type: none"><li>1. Centrifuge at 5,000xg for 5min.</li><li>2. Carefully open the tube and add 100ul of sterile water to dissolve the DNA.</li><li>3. Close the tube and incubate for 10 minutes at room temperature.</li><li>4. Briefly vortex the tube and then do a quick spin (less than 5000xg) to concentrate the liquid at the bottom.</li><li>5. Store the suspended plasmid at -20°C. The DNA is stable for at least one year from date of shipping when stored at -20°C.</li></ol>
<b>RefSeq:</b>	<a href="#">NM_001282651.2</a>
<b>RefSeq Size:</b>	2703 bp
<b>RefSeq ORF:</b>	1266 bp
<b>Locus ID:</b>	7355
<b>UniProt ID:</b>	<a href="#">P78381</a>
<b>Cytogenetics:</b>	Xp11.23
<b>Protein Families:</b>	Transmembrane
<b>MW:</b>	44.6 kDa
<b>Gene Summary:</b>	This gene encodes a member of the nucleotide-sugar transporter family. The encoded protein is a multi-pass membrane protein. It transports UDP-galactose from the cytosol into Golgi vesicles, where it serves as a glycosyl donor for the generation of glycans. Mutations in this gene cause congenital disorder of glycosylation type II <sub>m</sub> (CDG2M). Multiple alternatively spliced transcript variants encoding distinct isoforms have been found for this gene. [provided by RefSeq, Oct 2014]