

Product datasheet for **RC238123**

WSB2 (NM_001278557) Human Tagged ORF Clone

Product data:

Product Type: Expression Plasmids
Product Name: WSB2 (NM_001278557) Human Tagged ORF Clone
Tag: Myc-DDK
Symbol: WSB2
Synonyms: SBA2
Vector: pCMV6-Entry (PS100001)
E. coli Selection: Kanamycin (25 ug/mL)
Cell Selection: Neomycin
ORF Nucleotide Sequence: >RC238123 representing NM_001278557
Red=Cloning site Blue=ORF Green=Tags(s)

TTTTGTAATACGACTCACTATAGGGCGGCCGGAATTCGTCGACTGGATCCGGTACCGAGGAGATCTGCC
GCC**CGGATCGCC**

ATGCGGGTAGACAGGGAGAGCAGGTTTCTCAGGGGACGGGGACAGGCGAGGCTGTCCCGTAGAGGAAC
CGCTGCTGCTGGCCGAAGTCAAGCCCGGGCGCCCCACCAGTTTATTGGAAGTCCAGCTGTGAAACCTG
GAGCGTCGCCTTCTCCCCAGATGGCTCCTGGTTTCTGCTTGGTCTCAAGGACTGCATCGTCAAAGTATC
CCCTGGCCGTTGGAGGAGCAGTTTCATCCCTAAAGGGTTTGAAGCCAAAAGCCGAAGTAGCAAAAATGAGA
CGAAAGGGCGGGGAGCCAAAAGAGAAGACGCTGGACTGTGGTCAAGATTGTCTGGGGGCTGGCCTTCAG
CCCGTGGCCTTCCCCACCCAGCAGGAAGCTCTGGGCACGCCACCACCCCAAGTGCCTGATGTCTCTTGC
CTGGTTCTTGGTACGGGACTCAACGATGGGCAGATCAAGATCTGGGAGGTGCAGACAGGGCTCCTGCTTT
TGAATCTTCCGGCCACCAAGATGTCGTGAGAGATCTGAGCTTACACCCAGTGGCAGTTTATTGTTGGT
CTCCGCGTCACGGGATAAGACTCTTCGCATCTGGGACCTGAATAAACACGGTAAACAGATTCAAGTGTTA
TCGGGCCACCTGCAGTGGGTTTACTGCTGTTCCATCTCCCAGACTGCAGCATGCTGTGCTGCAGCTG
GAGAGAAGTCCGCTTTCTATGGAGCATGAGGTCCTACAGTTAATTCGGAAGCTAGAGGGCCATCAAAG
CAGTGTGTCTCTTGTGACTTCTCCCCGACTCTGCCCTGCTGTACGGCTTCTTACGATACCAATGTG
ATTATGTGGGACCCCTACACCGCGAAAGGCTGAGGTCCTCCACCACACCCAGTTGACCCCGCCATGG
ATGACAGTGACGTCCACATTAGCTCACTGAGATCTGTGTCTTCTCTCCAGAAGGCTGTACCTTGCCAC
GGTGGCAGATGACAGACTCCTCAGGATCTGGGCCCTGGAAGTGAAGTCCCATTTGCATTTGCTCTATG
ACCAATGGGCTTTGCTGCACATTTTTTCCACATGGTGGAGTCATTGCCACAGGGACAAGAGATGGCCACG
TCCAGTTCTGGACAGCTCCTAGGTCTGTCTCACTGAAGCACTTATGCCGAAAGCCCTTCGAAGTTT
CCTAAACAATTACCAAGTCTAGCACTGCCAATCCCCAAGAAAATGAAAGAGTTCCTCACATACAGGACT
TTT

ACGCGTACGCGGGCGCTCGAGCAGAAACTCATCTCAGAAGAGGATCTGGCAGCAAATGATATCCTGGATT
ACAAGGATGACGACGATAAGGTTTAA



Protein Sequence: >RC238123 representing NM_001278557
 Red=Cloning site Green=Tags(s)

MRVDRESRFLRGTGTGEAVAVEEPLLLAELKPRPHQFDWKSSCETWSVAFSPDGSWFAWSQGHCIVKLI
 PWPLEEQFIPKGF EAKSRSSKNETKGRGSPKEKTLDCGQIVWGLAFSPWSPPSRKLWARHHPQVPDVSC
 LVLATGLNDGQIKIWEVQTGLLLNLSGHQDVVRDLSTPSPGSLILVSASRDKTLRIWDLNKHGKQIQVL
 SGHLQWVYCCSISPDCSMLCSAAGEKSVFLWSMRSYTLIRKLEGHQSSVVSDFSPDSALLVTASYDTNV
 IMWDPYTGRLRSLHHTQVDPAMDSDVHISLRSVCF SPEGLYLATVADDRLLRIWALELKTPIAFAPM
 TNGLCCTFFPHGGVIATGTRDGHVQFWTAPRVLSSLKHLCRKALRSFLT TYQVLALPIPKMKEFLTYRT
 F

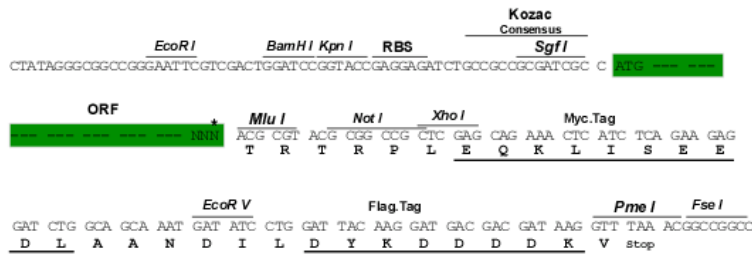
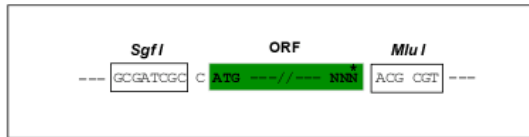
TRTRPLEQKLISEEDLAANDILDYKDDDDKV

Restriction Sites:

SgfI-MluI

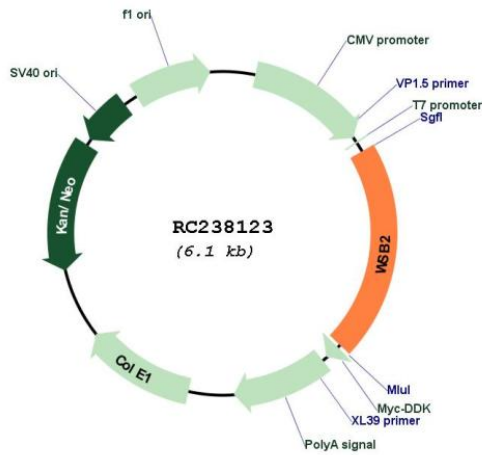
Cloning Scheme:

Cloning sites used for ORF Shuttling:



* The last codon before the Stop codon of the ORF

Plasmid Map:



ACCN: NM_001278557

ORF Size:	1263 bp
OTI Disclaimer:	The molecular sequence of this clone aligns with the gene accession number as a point of reference only. However, individual transcript sequences of the same gene can differ through naturally occurring variations (e.g. polymorphisms), each with its own valid existence. This clone is substantially in agreement with the reference, but a complete review of all prevailing variants is recommended prior to use. More info
OTI Annotation:	This clone was engineered to express the complete ORF with an expression tag. Expression varies depending on the nature of the gene.
Components:	The ORF clone is ion-exchange column purified and shipped in a 2D barcoded Matrix tube containing 10ug of transfection-ready, dried plasmid DNA (reconstitute with 100 ul of water).
Reconstitution Method:	<ol style="list-style-type: none">1. Centrifuge at 5,000xg for 5min.2. Carefully open the tube and add 100ul of sterile water to dissolve the DNA.3. Close the tube and incubate for 10 minutes at room temperature.4. Briefly vortex the tube and then do a quick spin (less than 5000xg) to concentrate the liquid at the bottom.5. Store the suspended plasmid at -20°C. The DNA is stable for at least one year from date of shipping when stored at -20°C.
RefSeq:	NM_001278557.1 , NP_001265486.1
RefSeq Size:	2798 bp
RefSeq ORF:	1266 bp
Locus ID:	55884
UniProt ID:	Q9NYS7
Cytogenetics:	12q24.23
Protein Families:	Druggable Genome
MW:	47.6 kDa
Gene Summary:	This gene encodes a member of the WD-protein subfamily. The encoded protein contains five WD-repeats spanning most of the protein and an SOCS box in the C-terminus. The SOCS box may act as a bridge between specific substrate-binding domains and E3 ubiquitin protein ligases. Three transcript variants encoding different isoforms have been found for this gene. [provided by RefSeq, Jun 2013]