

Product datasheet for RC237789

ZNF707 (NM_001288806) Human Tagged ORF Clone

Product data:

Product Type:	Expression Plasmids
Product Name:	ZNF707 (NM_001288806) Human Tagged ORF Clone
Tag:	Myc-DDK
Symbol:	ZNF707
Mammalian Cell Selection:	Neomycin
Vector:	pCMV6-Entry (PS100001)
E. coli Selection:	Kanamycin (25 ug/mL)
ORF Nucleotide Sequence:	>RC237789 representing NM_001288806. Blue=ORF Red=Cloning site Green=Tag(s)

```
GCTCGTTTAGTGAACCGTCAGAATTTTGTAAACGACTCACTATAGGGCGGCCGGGAATTCGTCGACTG
GATCCGGTACCGAGGAGATCTGCCGCCGCGATCGCC
RCATGGCCAGGAGCCAGTGACCTTCAGGGACGTGGCCATCTACTTCTCAAGGGAGGAGTGGCGGTGTC
TGGAAACCAGCCAGAGGGCCCTTACCGGGACGTGATGCTGGACAACCTCAGCAGTGTGGCTGCTCTGG
GATTTTGCAGCCCAGACCAGACCTCGTCTCTCGCCTGGAACAGTGGGAGGAGCCGTGGGTTGAAGACC
GGGAGAGACCTGAGTCCAGGCAGTGCAGAGGGGACCCCGCCAGGGCAAGGAAGTCTGCAGACCCCA
AGAGACATTGTGATCATCCAGCTTGGGCTCACAAGAAAACCCAGTGCGGCGAGAAAGAGCCAGGGAAAG
GAAGCAGCTTTAGGAAGGGCTTCAGGTGGACACGGATGACGGCAGCTTCCAGAGCTGCTCCAGAAA
GGACAGACGCCAAGCCACGGCTTTCCCGTGTACGGTGTCTACGCAGCGTTGTGGCGGGCGCCGGGCC
GCAGAGAGCGCCGGAAGCAGCGCAGTAGAGCTGTCGTTTCTGCGGCAGTGCAGGGAAGGCGCTCA
GCTGCCACAGCCGGCTGCTCGCTCACCAGACGGTGCACACGGGAACCAAGGCCTTCGAGTCCCCGAGT
GCGGCCAGACCTTCCGGTGGGCTTCAAACCTGCAGCGCCACCAGAAGAACCACACGCGGAGAAAGCCCT
TCTGCTGCGAGGCCTGCGGGCAGGCGTTCAGCCTGAAGGACCGCCTGGCTCAGCACCGCAAGGTCCACA
CCGAGCACAGGCCCTACTCGTGTGGCGACTGTGGGAAAGCCTTCAAGCAGAAGTCCAACCTTCTCAGAC
ACCAGCTGGTGCACACCGGGAGCGCCGTTCTACTGCGCGACTGCGGCAAAGCCTTCCGACCAAGG
AGAACCTCAGCCACCACCAGAGGTCCACAGCGGGGAGAAGCCCTACACCTGTGCCGAGTGCAGGCAAGT
CCTTCCGGTGGCCAAGGCTTACAGATCCACCGAGGCTGCACCTGACGAAGAGTTTACGAGTGGC
GCCACTGTGGAAAGGCTTCCGTACCTGGGGTTCTTACGCGGCATCAGAGGACTCACAGGCACGGGG
AGGTG
ACGCGTACGCGGCCGCTCGAGCAGAACTCATCTCAGAAGAGGATCTGGCAGCAAATGATATCCTGGAT
TACAAGGATGACGACGATAAGGTTTAAACGGCCGGC
```



[View online »](#)

Protein Sequence: >Peptide sequence encoded by RC237789
 Blue=ORF Red=Cloning site Green=Tag(s)

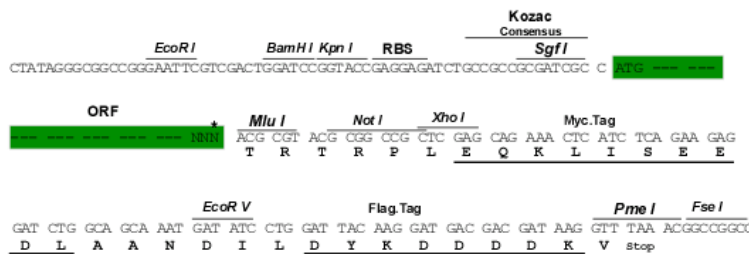
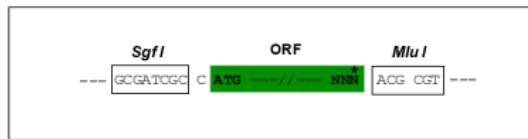
XWPRSQ*PSGTWPSTSQGRSGRVVNPARGPSTGT*CWTTSAVWLLWDFAAPDQTSSLAWNSGRSRGLKTGR
 DLSSRQCRGDPGQGQGLQTPRDIVIIQLGLTRKPTCGEKEPGKEAALGRASGWTRMTGSFPELLQKGG
 TSPRLSRVRCRSRVVGGGAAEASAGSSAQ*SCRSSAARAGRRSAATAGCSLTRCTREPRPSSAPSAAR
 PSGGLQTCSATRRTRARSPSAARPAGRRSA*RTAWLSTARSTPSTGPTRVATVGGKPSRRSPTFSDTSWC
 TPGSGRSTARTAAKPSGPRRTSATTRGSTAGRSPTVPVSAASPSGGPRASASTGGCT*RRGSTSAATVVK
 ASVTWGSRRGIRGLTGTGR
 TRTRPLEQKLISEEDLAANDILDYKDDDDKV

Chromatograms: https://cdn.origene.com/chromatograms/mk6539_e12.zip

Restriction Sites: Sgfl-MluI

Cloning Scheme:

Cloning sites used for ORF Shuttling:



* The last codon before the Stop codon of the ORF

ACCN: NM_001288806

ORF Size: 1109 bp

OTI Disclaimer: The molecular sequence of this clone aligns with the gene accession number as a point of reference only. However, individual transcript sequences of the same gene can differ through naturally occurring variations (e.g. polymorphisms), each with its own valid existence. This clone is substantially in agreement with the reference, but a complete review of all prevailing variants is recommended prior to use. [More info](#)

OTI Annotation: This clone was engineered to express the complete ORF with an expression tag. Expression varies depending on the nature of the gene.

Components: The ORF clone is ion-exchange column purified and shipped in a 2D barcoded Matrix tube containing 10ug of transfection-ready, dried plasmid DNA (reconstitute with 100 ul of water).

Reconstitution Method:

1. Centrifuge at 5,000xg for 5min.
2. Carefully open the tube and add 100ul of sterile water to dissolve the DNA.
3. Close the tube and incubate for 10 minutes at room temperature.
4. Briefly vortex the tube and then do a quick spin (less than 5000xg) to concentrate the liquid at the bottom.
5. Store the suspended plasmid at -20°C. The DNA is stable for at least one year from date of shipping when stored at -20°C.

RefSeq Size: 2228 bp

RefSeq ORF: 1116 bp

Locus ID: 286075

UniProt ID: [Q96C28](#)

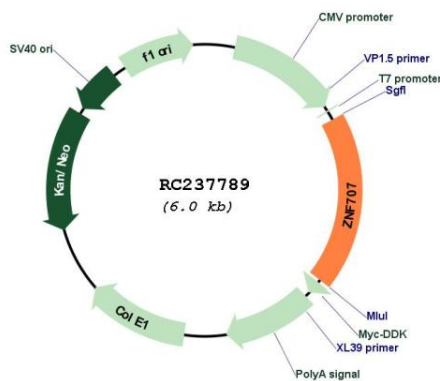
Cytogenetics: 8q24.3

Protein Families: Transcription Factors

MW: 38.1 kDa

Gene Summary: May be involved in transcriptional regulation.[UniProtKB/Swiss-Prot Function]

Product images:



Circular map for RC237789