

Product datasheet for RC237667

TBC1D14 (NM_001286805) Human Tagged ORF Clone

Product data:

Product Type: Expression Plasmids
Product Name: TBC1D14 (NM_001286805) Human Tagged ORF Clone
Tag: Myc-DDK
Symbol: TBC1D14
Vector: pCMV6-Entry (PS100001)
E. coli Selection: Kanamycin (25 ug/mL)
Cell Selection: Neomycin
ORF Nucleotide Sequence: >RC237667 representing NM_001286805
Red=Cloning site Blue=ORF Green=Tags(s)

TTTTGTAATACGACTCACTATAGGGCGGCCGGAATTCGTCGACTGGATCCGGTACCGAGGAGATCTGCC
 GCCCGATCGCC

ATGGTGGTTCAGGCCAAAAGCGAGAGCTGAAAGAAGCCAGCGAAGGAAGAAGCAGCTGGAAGAAAGAT
 GCAGAGTCGAGGAAAGCATTGGAACGCTGTGCTCACCTGGAATAATGAGATCTTACCTAACTGGGAAAC
 AATGTGGTGCTCTAGAAAAGTTCGAGATTTATGGTGGCAGGGAATCCCTCCAAGTGTGAGAGGCAAAGTC
 TGGAGCTTAGCCATTGGCAACGAGTTAAATATCACCCACGAGCTCTTTGACATCTGTCTTGCCCGAGCCA
 AGGAGAGGTGGCGTCCCTTAGCACAGGAGGCTCTGAAGTGGAGAACGAAGATGCTGGTTTTTCAGCAGC
 AGACAGAGAAGCCAGTCTGGAGCTTATTAACCTGGACATTTCTAGAACATTTCTAATCTCTGCATTTTC
 CAGCAAGGTGGTCCATATCATGACATGTTGCACAGTATTTGGGCGCTTACTTGTACCAGCCAGATG
 TGGGTTATGTCCAGGCATGTCTTCATAGCAGCAGTGTGATCTTGAACCTAGATACTGCAGATGCCTT
 TATTGCCTTTTCTAACCTTCTGAATAAACCTGTCAAATGGCGTTTTTTAGAGTGGACCATGGCCTTATG
 TTGACTTATTTTGTGCATTTGAAGTATCTTTGAAGAAAATTTGCCGAAATTTTGCGCATTTCAAGA
 AGAACAACTAACTCCAGATATCTACCTAATTGATTGGATCTTTACCTTATATAGTAAATCTCTGCCCT
 CGACCTGGCCTGTGATCTGGGACGTGTCTGTGCGGATGGGGAAGAGTTCCTGTTCCGCACGGCCCTG
 GGCATCTGAAGCTGTTGAGGACATCCTGACCAAGATGGACTTCATTCATGGCCAGTTCCTGACCC
 GGCTGCCCGAGGACCTGCCCGCCGAGGAGCTGTTTGCCTCATCGCCACGATCCAGATGCAGAGCCGAAA
 CAAGAAGTGGGCTCAGGTACTGACTGCATTGCAGAAAGACAGCCGGGAAATGGAGAAGGGAAGTCCGTCC
 CTCCGACAC

ACGCGTACGCGGCCGCTCGAGCAGAACTCATCTCAGAAGAGGATCTGGCAGCAATGATATCTGGATT
 ACAAGGATGACGACGATAAGGTTTAA



[View online »](#)

Protein Sequence: >RC237667 representing NM_001286805
 Red=Cloning site Green=Tags(s)

MVVQAKKRELKEAQRKKQLEERCVEESIGNAVLTWNNEILPNWETMWC SRKVRDLWWQGIPPSVRGKV
 WSLAIGNELNITHELFDICLARA KERWRS LSTGGSEVENEDAGFSAADREASLELIKLDISRTFPNLCIF
 QQGGPYHDM LHSILGAYTCYRDPDVGYVQGM SFIAAVLILNLDTADAFIAF SNLLNKPCQMAFFRVDHGLM
 LTYFAAFEVFF EENLPKLF AHFKKNLTPDIYLIDWIFTL YSKSLPLDLACRIWDVFCRDGEEFLFRTAL
 GILKLFEDILTKMDFIHMAQFLTRL PEDLPAEELFASIATI QMQSRNKWAQVLTALQKDSREMEKGPS
 LRH

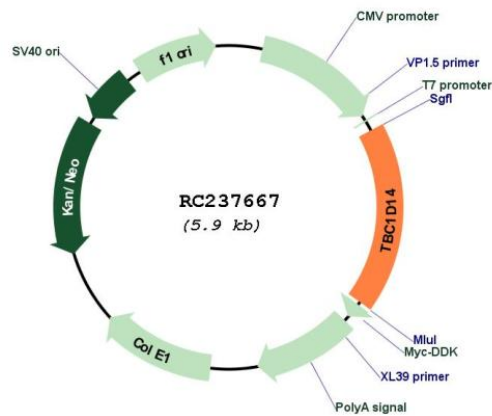
TRTRPLEQKLISEEDLAANDILDYKDDDDKV

Restriction Sites: SgfI-MluI

Cloning Scheme:



Plasmid Map:



ACCN: NM_001286805

ORF Size:	1059 bp
OTI Disclaimer:	The molecular sequence of this clone aligns with the gene accession number as a point of reference only. However, individual transcript sequences of the same gene can differ through naturally occurring variations (e.g. polymorphisms), each with its own valid existence. This clone is substantially in agreement with the reference, but a complete review of all prevailing variants is recommended prior to use. More info
OTI Annotation:	This clone was engineered to express the complete ORF with an expression tag. Expression varies depending on the nature of the gene.
Components:	The ORF clone is ion-exchange column purified and shipped in a 2D barcoded Matrix tube containing 10ug of transfection-ready, dried plasmid DNA (reconstitute with 100 ul of water).
Reconstitution Method:	<ol style="list-style-type: none">1. Centrifuge at 5,000xg for 5min.2. Carefully open the tube and add 100ul of sterile water to dissolve the DNA.3. Close the tube and incubate for 10 minutes at room temperature.4. Briefly vortex the tube and then do a quick spin (less than 5000xg) to concentrate the liquid at the bottom.5. Store the suspended plasmid at -20°C. The DNA is stable for at least one year from date of shipping when stored at -20°C.
RefSeq:	NM_001286805.1 , NP_001273734.1
RefSeq Size:	4026 bp
RefSeq ORF:	1062 bp
Locus ID:	57533
UniProt ID:	Q9P2M4
Cytogenetics:	4p16.1
MW:	41.3 kDa
Gene Summary:	Negative regulator of starvation-induced autophagosome formation.[UniProtKB/Swiss-Prot Function]