

Product datasheet for RC237548

CysLT1 (CYSLTR1) (NM_001282188) Human Tagged ORF Clone

Product data:

Product Type:	Expression Plasmids
Product Name:	CysLT1 (CYSLTR1) (NM_001282188) Human Tagged ORF Clone
Tag:	Myc-DDK
Symbol:	CysLT1
Synonyms:	CYSLT1; CYSLT1R; CYSLTR; HMTMF81
Mammalian Cell Selection:	Neomycin
Vector:	pCMV6-Entry (PS100001)
E. coli Selection:	Kanamycin (25 ug/mL)
ORF Nucleotide Sequence:	>RC237548 ORF sequence Red=Cloning site Blue=ORF Green=Tags(s)

TTTTGTAATACGACTCACTATAGGGCGCCGGGAATTCGTCGACTGGATCCGGTACCGAGGAGATCTGCC
GCC**CGATCGCC**

ATGGATGAAACAGGAAATCTGACAGTATCTTCTGCCACATGCCATGACACTATTGATGACTTCGCAATC
AAGTGTATTCCACCTTGTACTCTATGATCTCTGTTGTAGGCTTCTTTGGCAATGGCTTTGTGCTCTATGT
CCTCATAAAAACCTATCACAAGAAGTCAGCCTTCCAAGTATACATGATTAATTTAGCAGTAGCAGATCTA
CTTTGTGTGTGCACACTGCCTCTCCGTGTGGTCTATTATGTTACAAAAGGCATTTGGCTCTTTGGTGACT
TCTTGTGCCGCTCAGCACCTATGCTTTGTATGTCAACCTCTATTGTAGCATCTTCTTTATGACAGCCAT
GAGCTTTTTCCGGTGCATTGCAATTGTTTTCCAGTCCAGAACATTAATTTGGTTACACAGAAAAAGCC
AGGTTTGTGTGTAGGTATTTGGATTTTGTGATTTTGACCAAGTCTCCATTTCTAATGGCCAAACCAC
AAAAAGATGAGAAAAATAATACCAAGTGCCTTGAGCCCCACAAGACAATCAAATAAAAAATCATGTTTT
GGTCTTGCAATATGTGTCATTGTTGTTGGCTTATCATCCCTTTGTTATTATAATTGTCTGTTACACA
ATGATCATTTTGACCTTACTAAAAAATCAATGAAAAAATCTGTCAAGTCATAAAAAGGCTATAGGAA
TGATCATGGTCGTGACCGCTGCCTTTTAGTCAGTTTCATGCCATATCATATTCAACGTACCATTACCT
TCATTTTTTACACAATGAACTAAACCTGTGATTCTGTCTTAGAATGCAGAAGTCCGTGGTCATAACC
TTGTCTCTGGCTGCATCCAATTGTTGCTTTGACCCTCTCCTATATTTCTTTCTGGGGTAACTTTAGGA
AAAGGCTGTCTACATTCAGAAAGCATTCTTTGTCCAGCGTGACTTATGTACCCAGAAAAGAAGCCCTTTT
GCCAGAAAAAGGAGAAGAAATATGTAAAGTA

ACGCGTACGCGGCCGCTCGAGCAGAACTCATCTCAGAAGAGGATCTGGCAGCAAATGATATCCTGGATT
ACAAGGATGACGACGATAAGGTTTAA



[View online »](#)

Protein Sequence: >RC237548 protein sequence
Red=Cloning site Green=Tags(s)

MDETGNLTVSSATCHDTIDDFRNQVYSTLYSMISVVGFFGNGFVLYVLIKTYHKKSAFQVYMINLAVADL
 LCVCTPLRVVYVYVHKGIVLFGDFLCRLSTYALYVNLYSIFFMTAMSFRCIAIVFPVQINLVTQKKA
 RFVCGIWIWIFVILTSSPFLMAKPQKDEKNNTKCFEPPQDNQTKNHVLLVHYVSLFVGGIIPFVIIVCYT
 MIILTLLKKSMMKNLSSHKKAIGMIMVVTAFLVSFMPYHIQRTIHLHFLHNETKPCDSVLRMQKSVVIT
 LSLAASNCCFDPLLYFFSGGNFRKRLSTFRKHSLSSVTYVPRKKASLPEKGEEICKV

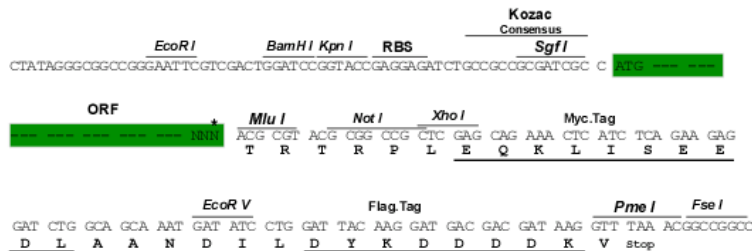
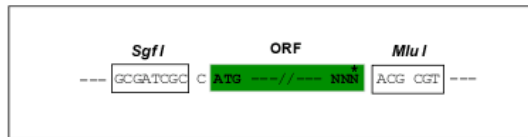
TRTRPLEQKLISEEDLAANDILDYKDDDDKV

Chromatograms: https://cdn.origene.com/chromatograms/ja1556_f02.zip

Restriction Sites: SgfI-MluI

Cloning Scheme:

Cloning sites used for ORF Shuttling:



* The last codon before the Stop codon of the ORF

ACCN: NM_001282188

ORF Size: 1011 bp

OTI Disclaimer: The molecular sequence of this clone aligns with the gene accession number as a point of reference only. However, individual transcript sequences of the same gene can differ through naturally occurring variations (e.g. polymorphisms), each with its own valid existence. This clone is substantially in agreement with the reference, but a complete review of all prevailing variants is recommended prior to use. [More info](#)

OTI Annotation: This clone was engineered to express the complete ORF with an expression tag. Expression varies depending on the nature of the gene.

Components: The ORF clone is ion-exchange column purified and shipped in a 2D barcoded Matrix tube containing 10ug of transfection-ready, dried plasmid DNA (reconstitute with 100 ul of water).

Reconstitution Method:

1. Centrifuge at 5,000xg for 5min.
2. Carefully open the tube and add 100ul of sterile water to dissolve the DNA.
3. Close the tube and incubate for 10 minutes at room temperature.
4. Briefly vortex the tube and then do a quick spin (less than 5000xg) to concentrate the liquid at the bottom.
5. Store the suspended plasmid at -20°C. The DNA is stable for at least one year from date of shipping when stored at -20°C.

RefSeq: [NM_001282188.2](#)

RefSeq Size: 2840 bp

RefSeq ORF: 1014 bp

Locus ID: 10800

UniProt ID: [Q9Y271](#)

Cytogenetics: Xq21.1

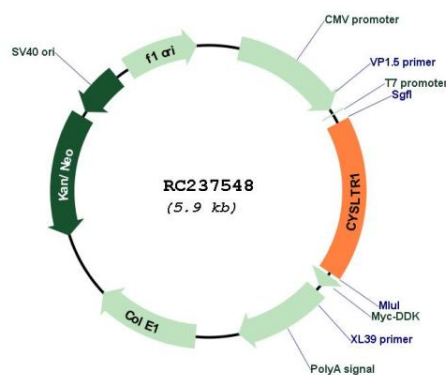
Protein Families: Druggable Genome, GPCR, Transmembrane

Protein Pathways: Calcium signaling pathway, Neuroactive ligand-receptor interaction

MW: 38.5 kDa

Gene Summary: This gene encodes a member of the G-protein coupled receptor 1 family. The encoded protein is a receptor for cysteinyl leukotrienes, and is involved in mediating bronchoconstriction via activation of a phosphatidylinositol-calcium second messenger system. Activation of the encoded receptor results in contraction and proliferation of bronchial smooth muscle cells, eosinophil migration, and damage to the mucus layer in the lung. Upregulation of this gene is associated with asthma and dysregulation may also be implicated in cancer. Alternative splicing results in multiple transcript variants. [provided by RefSeq, Aug 2013]

Product images:



Circular map for RC237548