

Product datasheet for **RC237516**

HSD11B1L (NM_001267868) Human Tagged ORF Clone

Product data:

Product Type: Expression Plasmids
Product Name: HSD11B1L (NM_001267868) Human Tagged ORF Clone
Tag: Myc-DDK
Symbol: HSD11B1L
Synonyms: 11-beta-HSD3; 11-DH3; HSD1L; HSD3; SCDR10; SCDR10B; SDR26C2
Vector: pCMV6-Entry (PS100001)
E. coli Selection: Kanamycin (25 ug/mL)
Cell Selection: Neomycin
ORF Nucleotide Sequence: >RC237516 representing NM_001267868
Red=Cloning site Blue=ORF Green=Tags(s)

TTTTGTAATACGACTCACTATAGGGCGCCGGAATTCGTCGACTGGATCCGGTACCGAGGAGATCTGCC
GCC**CGGATCGCC**

ATGGCAAATCTCGGCACACTACAACCTTCTGCCTCCAGGTTCAAGCGATTCTCCTGCCTCAGCCTCCAA
ATATCTGGATTACAGGCATGCCTGTGCCGGCCACCTCTGTCCCCTGTCCCTCTGCAGGCCACACAGGAC
CATGAAGGTGCTTCTCCTCACAGGGCTGGGGCCCTGTTCTTCGCCTATTATTGGGATGACAACCTCGAC
CCAGCCAGCCTCCAGGGAGCGCGAGTGCTGCTGACAGGGGCAACGCTGGTGTGGTGAGGAGCTGGCCT
ATCACTACGCGCGTCTGGGCTCCCACTGGTGCTCACTGCCACACTGAGGCTCTCCTGCAGAAGGTGGT
AGGGAAGTGC CGGAAGCTGGGCGCCCCAAGGTTCTACATCGCGGGCGGACATGGCCTCCCTGAGGCG
CCCAGAGCGTGGTGCAGTTTGGCTGGACAAGCTGGGCGGGCTGGACTACCTCGTGCTGAACCACATCG
GCGGCGCCCCGGCCGGCACGCGAGCCCGCAGCCCCAGGCAACTCGTGGCTCATGCAGGTAACCTTTGT
GAGCTACGTGCAACTGACGTCGCGGGCGCTGCCAGCCTGACGGACAGCAAGGGCTCCCTGGTGGTGGT
TCCTCGTGCTCGGCCGCGTCCACGTCGTTCTCCACTCCCTACTCGGCGGCAAGTTTGGCTGGACG
GCTTCTTCGGCTCCCTGCGGCGGGAGCTGGACGTGACGAGCTGACGAGGACGTAACGAGGATGATGCTGCTCCT
GGCCTCCGAGATCGCGCTCCGCCGCCGAGGAGTCAAGGGAGTCAAGGGGTCACAGGGGTCACAGGGGTC
CCCAAGGCAGCCCTGGCGTGATCCGCGCGGGCCACGCGCGCGGCGCGCTTCTACCCGTGGCGTT
TCCGCCTGCTGCTTGTCTCCGCGCTGGCTACCGCGCCCGGGCTGGTTTATCCGCCAGGAGCTCAA
CGTCACGGCCGCGGACGCC

ACGCGTACGCGGCGCTCGAGCAGAACTCATCTCAGAAGAGGATCTGGCAGCAATGATATCCTGGATT
ACAAGGATGACGACGATAAGGTTTAA



[View online »](#)

Protein Sequence: >RC237516 representing NM_001267868
 Red=Cloning site Green=Tags(s)

MANLGTLLQLPPRFKRFSCLSLPNIWITGMPVPATSVPCPSAGPHRTMKVLLLTGLGALFFAYYWDNFD
 PASLQGARVLLTGANAGVGEELAYHYARLGSHLVLTAHTEALLQKVVGNCRKLGAPKVFYIAADMASPEA
 PESVVQFALDKLGGLDYLVLNHIGGAPAGTRARSPQATRWLMQVNFVSYVQLTSRALPSLTDSKGSLLVVV
 SLLLRVPTSFSTPYSAKFALDGGFFGSLRRELDVQDVNVAITMCVGLRDRASAAEAVRGVTRVKAAPG
 PKAALAVIRGGATRAAGVFYPWRFRLCLLRRWLPRAWFIRQELNVTAAAA

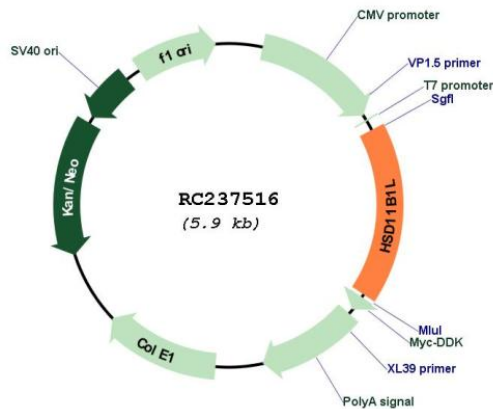
TRTRPLEQKLISEEDLAANDILDYKDDDDKV

Restriction Sites: Sgfl-MluI

Cloning Scheme:



Plasmid Map:



ACCN: NM_001267868

ORF Size: 999 bp

OTI Disclaimer:	The molecular sequence of this clone aligns with the gene accession number as a point of reference only. However, individual transcript sequences of the same gene can differ through naturally occurring variations (e.g. polymorphisms), each with its own valid existence. This clone is substantially in agreement with the reference, but a complete review of all prevailing variants is recommended prior to use. More info
OTI Annotation:	This clone was engineered to express the complete ORF with an expression tag. Expression varies depending on the nature of the gene.
Components:	The ORF clone is ion-exchange column purified and shipped in a 2D barcoded Matrix tube containing 10ug of transfection-ready, dried plasmid DNA (reconstitute with 100 ul of water).
Reconstitution Method:	<ol style="list-style-type: none">1. Centrifuge at 5,000xg for 5min.2. Carefully open the tube and add 100ul of sterile water to dissolve the DNA.3. Close the tube and incubate for 10 minutes at room temperature.4. Briefly vortex the tube and then do a quick spin (less than 5000xg) to concentrate the liquid at the bottom.5. Store the suspended plasmid at -20°C. The DNA is stable for at least one year from date of shipping when stored at -20°C.
RefSeq:	NM_001267868.2
RefSeq Size:	2098 bp
RefSeq ORF:	1002 bp
Locus ID:	374875
Cytogenetics:	19p13.3
Protein Families:	Druggable Genome
MW:	36.4 kDa
Gene Summary:	This gene is a member of the hydroxysteroid dehydrogenase family. The encoded protein is similar to an enzyme that catalyzes the interconversion of inactive to active glucocorticoids (e.g. cortisone). Alternatively spliced transcript variants encoding multiple isoforms have been observed for this gene. [provided by RefSeq, Jun 2012]