

Product datasheet for RC237439

MYADM (NM_001290194) Human Tagged ORF Clone

Product data:

Product Type:	Expression Plasmids
Product Name:	MYADM (NM_001290194) Human Tagged ORF Clone
Tag:	Myc-DDK
Symbol:	MYADM
Synonyms:	SB135
Mammalian Cell Selection:	Neomycin
Vector:	pCMV6-Entry (PS100001)
E. coli Selection:	Kanamycin (25 ug/mL)
ORF Nucleotide Sequence:	>RC237439 representing NM_001290194. Blue=ORF Red=Cloning site Green=Tag(s)

```
GCTCGTTTGTAGTGAACCGTCAGAATTTTGTAAACGACTCACTATAGGGCGCCGGGAATTCGTCGACTG
GATCCGGTACCGAGGAGATCTGCCGCCGCGATCGCC
ATGCCAGTGACGGTAACCCGCACCACCATCACAACCACCACGACGTCATCTTCGGGCCTGGGGTCCCCC
ATGATCGTGGGGTCCCCTCGGGCCCTGACACAGCCCCTGGGTCTCCTTCGCCTGCTGCAGCTGGTGTCT
ACCTGCGTGGCCTTCTCGCTGGTGGCTAGCGTGGGCGCCTGGACGGGTCCATGGGCAACTGGTCCATG
TTCACCTGGTGTCTGCTTCTCCGTGACCCTGATCATCCTCATCGTGGAGCTGTGCGGGCTCCAGGCC
CGCTTCCCCTGTCTTGGCGCAACTTCCCATCACCTTCGCCTGCTATGCGGCCCTTCTGCTCTCG
GCCTCCATCATCTACCCACCACCTATGTCAGTTCTGTCCCACGGCCGTTTCGGGGACCACGCCATC
GCCGCCACCTTCTTCTCCTGCATCGCGTGTGTGGCTTACGCCACCGAAGTGGCCTGGACCCGGGCCCGG
CCCGGCGAGATCACTGGCTATATGGCCACCGTACCCGGGCTGCTGAAGGTGCTGGAGACCTTCGTTGCC
TGCATCATCTTCGCGTTCATCAGCGACCCCAACCTGTACCAGCACCAGCCTGCCCTGGAGTGGTGCCTG
GCGGTGTACGCCATCTGCTTCACTAGCGGCCATCGCCATCCTGCTGAACCTGGGGGAGTGCACCAAC
GTGCTACCCATCCCCTTCCCAGCTTCTGTGCGGGCTGGCCTTGTCTGTCTCCTCTATGCCACC
GCCCTTGTCTCTGGCCCTCTACCAGTTCGATGAGAAGTATGGCGCCAGCCTCGGCGCTCGAGAGAT
GTAAGCTGCAGCCGACCCATGCCTACTACGTGTGTGCCTGGGACCGCCACTGGCTGTGGCCATCCTG
ACGGCCATCAACCTACTGGCGTATGTGGCTGACCTGGTGCACCTGCCACCTGGTTTTTGTCAAGGTC
ACGCGTACGCGGCCGCTCGAGCAGAACTCATCTCAGAAGAGGATCTGGCAGCAAATGATATCCTGGAT
TACAAGGATGACGACGATAAGGTTTAAACGGCCGGC
```



[View online »](#)

Protein Sequence: >Peptide sequence encoded by RC237439
 Blue=ORF Red=Cloning site Green=Tag(s)

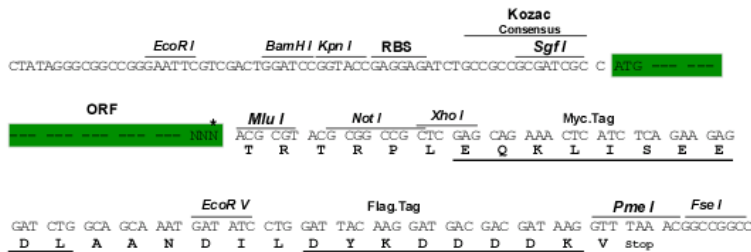
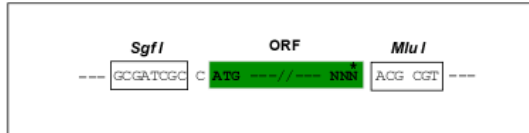
MPVTVTRTTITTTTTSSSGLGSPMIVGSPRALTQPLGLLRLLQLVSTCVAFSLVASVGAWTGSMDGNSM
 FTWCFCFSVTLIILIVELCGLQARFPLSWRNFPITFACYAALFCLASASIIYPTTYVQFLSHGRSRDHA
 AATFFSCIACVAYATEVAWTRARPEITGYMATVPGLLKVLETFVACIIFAFISDPNLYQHQPALWCV
 AVYAICFILAAIAILLNLGECTNVLPIPFPSFLSGLALLSVLLYATALVLWPLYQFDEKYGGQPRRSRD
 VSCSRSHAYYVCAWDRRLAVAILTAINLLAYVADLVHSAHLVFVKV
 TRTRPLEQKLISEEDLAANDILDYKDDDDKV

Chromatograms: https://cdn.origene.com/chromatograms/mk6380_c05.zip

Restriction Sites: SgfI-MluI

Cloning Scheme:

Cloning sites used for ORF Shuttling:



* The last codon before the Stop codon of the ORF

ACCN: NM_001290194

ORF Size: 966 bp

OTI Disclaimer: The molecular sequence of this clone aligns with the gene accession number as a point of reference only. However, individual transcript sequences of the same gene can differ through naturally occurring variations (e.g. polymorphisms), each with its own valid existence. This clone is substantially in agreement with the reference, but a complete review of all prevailing variants is recommended prior to use. [More info](#)

OTI Annotation: This clone was engineered to express the complete ORF with an expression tag. Expression varies depending on the nature of the gene.

Components: The ORF clone is ion-exchange column purified and shipped in a 2D barcoded Matrix tube containing 10ug of transfection-ready, dried plasmid DNA (reconstitute with 100 ul of water).

Reconstitution Method:

1. Centrifuge at 5,000xg for 5min.
2. Carefully open the tube and add 100ul of sterile water to dissolve the DNA.
3. Close the tube and incubate for 10 minutes at room temperature.
4. Briefly vortex the tube and then do a quick spin (less than 5000xg) to concentrate the liquid at the bottom.
5. Store the suspended plasmid at -20°C. The DNA is stable for at least one year from date of shipping when stored at -20°C.

RefSeq Size: 3010 bp

RefSeq ORF: 969 bp

Locus ID: 91663

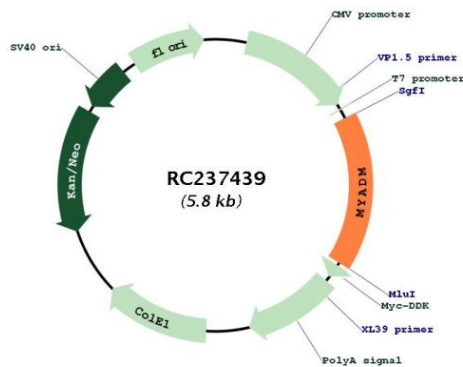
UniProt ID: [Q96S97](#)

Cytogenetics: 19q13.42

Protein Families: Transmembrane

MW: 35.3 kDa

Product images:



Circular map for RC237439