

Product datasheet for **RC237395**

C11orf54 (NM_001286068) Human Tagged ORF Clone

Product data:

Product Type: Expression Plasmids
Product Name: C11orf54 (NM_001286068) Human Tagged ORF Clone
Tag: Myc-DDK
Symbol: C11orf54
Synonyms: PTD012; PTOD012
Vector: pCMV6-Entry (PS100001)
E. coli Selection: Kanamycin (25 ug/mL)
Cell Selection: Neomycin
ORF Nucleotide Sequence: >RC237395 representing NM_001286068
Red=Cloning site Blue=ORF Green=Tags(s)

TTTTGTAATACGACTCACTATAGGGCGCCGGAATTCGTCGACTGGATCCGGTACCGAGGAGATCTGCC
GCC**CGGATCGCC**

ATGGCTTGTGCTGAGTTTTCTTTTCATGTACCAAGTCTTGAAGAGCTTGTGGAGTTATGCAGAAGGGT
TAAAAGATAACTTTGCTGATGTCCAGGTCTCTGTAGTTGATTGCCCTGATTTGACTAAGGAACCCCTTAC
CTTTCCTGTAAAAGGCATCTGTGGGAAAAGTGAATTGCAGAAGTTGGAGGTGTGCCTTACTTATTGCCT
CTTGTAACCAAAAAAAGTTTATGATCTGAATAAAATTGCAAAAGAAATCAAGCTGCCTGGAGCCTTTA
TTCTTGGAGCAGGAGCAGGTCCATTTTCAGACTCTCGGGTTCAATTCTGAGTTTATGCCAGTTATTCAGAC
AGAAAGTGAACACAAGCCTCCTGTAATGGAAGTTACTTTGCCCATGTGAACCCTGCAGATGGAGGGTGC
CTACTGGAGAAATACAGTGAGAAATGTCATGATTTTCAGTGTGCATTACTGGCTAATCTTTTTGCCAGTG
AAGGCCAACCTGGCAAGGTAATTGAGGTGAAAGCCAAAAGAAGAACTGGACCACTTAACCTTTGTGACTTG
TATGAGAGAGACCCTGGAAAAACATTATGGAATAAGCCTATAGGAATGGGAGGTACTTTCATAATTGAG
AAGGAAAAAGTGAAGTCTCACATTATGCCTGCAGAATTTCTTCCTGCCCTTGAACCTGATGAAGAAG
TGAAATAAATGGTTGCATTTTTATGAAATGAAAGCTCCTTTGGTTTGTCTACCAGTTTTGTCTCCAGAGA
CCAGGGTTTGATTTGCGACTGGAGCACACTATTTTTTAGTCGTCATGGAGAAGGTGGACACTACCAT
TATGACTACTCCAGATATAGTGAATATCTTGATACTTCTTACCTGCAGAGTTTCTCTATCGCATTG
ATCAACCAAAAAGAGACGCATTCAATTGGGCGAGAT

ACGCGTACGCGGCCGCTCGAGCAGAAACTCATCTCAGAAGAGGATCTGGCAGCAATGATATCCTGGATT
ACAAGGATGACGACGATAAGGTTTAA



[View online »](#)

Protein Sequence: >RC237395 representing NM_001286068
 Red=Cloning site Green=Tags(s)

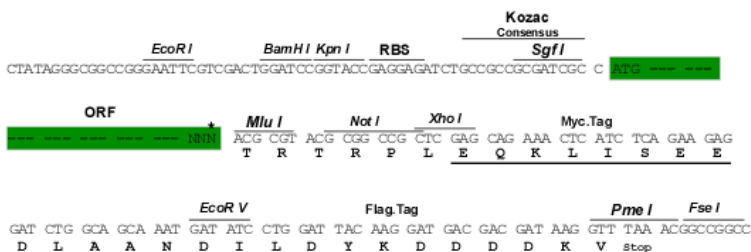
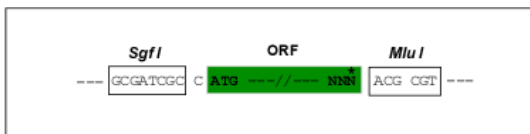
MACAEFSFHVPSLEELAGVMQKGLKDNFADVQSVVDCPDLTKEPFTFPVKIGCGKTRIAEVGGVPYLLP
 LVNQKKVYDLNKIAKEIKLPGAFILGAGAGPFQTLGFNSEFMPVIQTSEHKPPVNGSYFAHVNPADGGC
 LLEKYSEKCHDFQCALLANLFASEGQPGKVIIEVKAKRRRTGPLNFVTCMRETLEKHGYNKPIGMGGTFIIQ
 KGKVKSHIMPAEFSSCPLNSDEEVNKWLHFYEMKAPLVCLPVFVSRDPGFDLRLLEHTHFFSRHGEQGHHY
 YDTTPDIVEYLGFLPAEFLYRIDQPKETHSIGRD

TRTRPLEQKLISEEDLAANDILDYKDDDDKV

Restriction Sites: SgfI-MluI

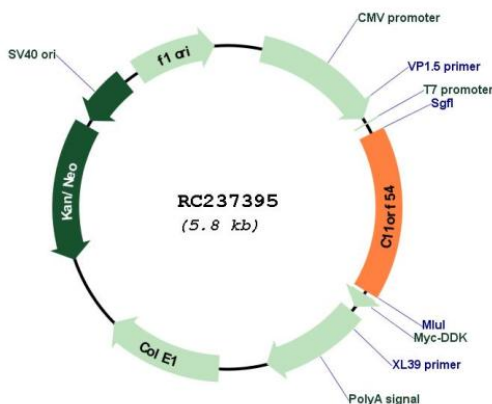
Cloning Scheme:

Cloning sites used for ORF Shuttling:



* The last codon before the Stop codon of the ORF

Plasmid Map:



ACCN: NM_001286068

ORF Size: 945 bp

OTI Disclaimer:	The molecular sequence of this clone aligns with the gene accession number as a point of reference only. However, individual transcript sequences of the same gene can differ through naturally occurring variations (e.g. polymorphisms), each with its own valid existence. This clone is substantially in agreement with the reference, but a complete review of all prevailing variants is recommended prior to use. More info
OTI Annotation:	This clone was engineered to express the complete ORF with an expression tag. Expression varies depending on the nature of the gene.
Components:	The ORF clone is ion-exchange column purified and shipped in a 2D barcoded Matrix tube containing 10ug of transfection-ready, dried plasmid DNA (reconstitute with 100 ul of water).
Reconstitution Method:	<ol style="list-style-type: none">1. Centrifuge at 5,000xg for 5min.2. Carefully open the tube and add 100ul of sterile water to dissolve the DNA.3. Close the tube and incubate for 10 minutes at room temperature.4. Briefly vortex the tube and then do a quick spin (less than 5000xg) to concentrate the liquid at the bottom.5. Store the suspended plasmid at -20°C. The DNA is stable for at least one year from date of shipping when stored at -20°C.
RefSeq:	NM_001286068.2
RefSeq Size:	2589 bp
RefSeq ORF:	948 bp
Locus ID:	28970
UniProt ID:	Q9H0W9
Cytogenetics:	11q21
MW:	35.6 kDa
Gene Summary:	Exhibits ester hydrolase activity on the substrate p-nitrophenyl acetate.[UniProtKB/Swiss-Prot Function]