

Product datasheet for **RC237190**

GCET1 (SERPINA9) (NM_001284276) Human Tagged ORF Clone

Product data:

Product Type: Expression Plasmids
Product Name: GCET1 (SERPINA9) (NM_001284276) Human Tagged ORF Clone
Tag: Myc-DDK
Symbol: SERPINA9
Synonyms: GCET1; SERPINA11; SERPINA11b
Vector: pCMV6-Entry (PS100001)
E. coli Selection: Kanamycin (25 ug/mL)
Cell Selection: Neomycin
ORF Nucleotide Sequence: >RC237190 representing NM_001284276
Red=Cloning site Blue=ORF Green=Tags(s)

TTTTGTAATACGACTCACTATAGGGCGGCCGGAATTCGTCGACTGGATCCGGTACCGAGGAGATCTGCC
GCC**GCGATCGCC**

ATGGGAAGTGCCTCTTCGTCAAGAAGGAGCTGCAGCTGCAGGCAAATTTCTTGGCAATGTCAAGAGGC
TGTATGAAGCAGAAGTCTTTTCTACAGATTTCTCAACCCCTCCATTGCCAGGGCAGGATCAACAGCCA
TGTGAAAAAGAAGACCCAAGGGAAGTTGTAGACATAATCCAAGGCCTTGACCTTCTGACGGCCATGGTT
CTGGTGAACCACATTTTCTTTAAAGCCAAGTGGGAGAAGCCCTTTCACCTGAATATACAAGAAAGAACT
TCCATTCTGGTGGCGAGCAGGTCACTGTGCATGTCCCATGATGCACCAGAAAGAGCAGTTCGCTTT
TGGGGTGGATACAGAGCTGAAGTCTTTGTGCTGCAGATGGATTACAAGGGAGATGCCGTGGCCTCTTT
GTCCTCCCTAGCAAGGGCAAGATGAGGCAACTGGAACAGGCCTTGTGACCCAGAACACTGAGAAAGTGA
GCCACTCACTCCAGAAAAGGTGGATAGAGGTGTTCAATCCAGATTTTCCATTTCTGCCTCCTACAACT
GGAAACCATCTCCCGAAGATGGGCATCCAAAATGTCTTTGACAAAAATGCTGATTTTTCTGGAATTGCA
AAGAGAGACTCCCTGCAGTTTCTAAAGCAACCCACAAGGCTGTGCTGGATGTCAGTGAAGAGGGCACTG
AGGCCACAGCAGTACCACCACCAAGTTCATAGTCCGATCGAAGGATGGCCCTCTTACTCACTGTCTC
CTTCAATAGGACCTTCTGATGATTACAAAATAAGCCACAGACGGTATTCTCTTTCTAGGAAAAGTG
GAAAATCCCACTAAATCC

ACGCGTACGCGGCCGCTCGAGCAGAACTCATCTCAGAAGAGGATCTGGCAGCAAATGATATCCTGGATT
ACAAGGATGACGACGATAAGGTTTAA



[View online »](#)

Protein Sequence: >RC237190 representing NM_001284276
 Red=Cloning site Green=Tags(s)

MGSALFVKKELQLQANFLGNVKRLYEAEVFSTDFSNPSIAQARINSHVKKKTQGKVVDDIIQGLDLLTAMV
 LVNHIFKAKWEKPFHPEYTRKNFPFLVGEQVTVHVPMMHQEQFAFGVDTELNCFVLQMDYKGDVAFF
 VLP SKGMRQLEQALSARTLRKWSHSLQKRWIEVFIPRFSISASYNLETILPKMGIQNVFDKNADFSGIA
 KRDSLQVSKATHKAVLDVSEEGTEATAATTTKFI VRSKDGPSYFTVSFNRTFLMMITNKATDGI LFLGKV
 ENPTKS

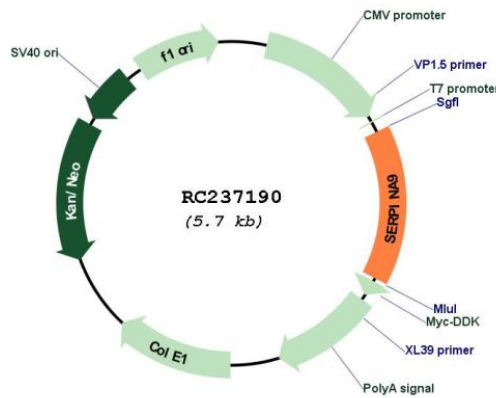
TRTRPLEQKLISEEDLAANDILDYKDDDDKV

Restriction Sites: SgfI-MluI

Cloning Scheme:



Plasmid Map:



ACCN: NM_001284276

ORF Size: 858 bp

OTI Disclaimer:	The molecular sequence of this clone aligns with the gene accession number as a point of reference only. However, individual transcript sequences of the same gene can differ through naturally occurring variations (e.g. polymorphisms), each with its own valid existence. This clone is substantially in agreement with the reference, but a complete review of all prevailing variants is recommended prior to use. More info
OTI Annotation:	This clone was engineered to express the complete ORF with an expression tag. Expression varies depending on the nature of the gene.
Components:	The ORF clone is ion-exchange column purified and shipped in a 2D barcoded Matrix tube containing 10ug of transfection-ready, dried plasmid DNA (reconstitute with 100 ul of water).
Reconstitution Method:	<ol style="list-style-type: none">1. Centrifuge at 5,000xg for 5min.2. Carefully open the tube and add 100ul of sterile water to dissolve the DNA.3. Close the tube and incubate for 10 minutes at room temperature.4. Briefly vortex the tube and then do a quick spin (less than 5000xg) to concentrate the liquid at the bottom.5. Store the suspended plasmid at -20°C. The DNA is stable for at least one year from date of shipping when stored at -20°C.
RefSeq:	NM_001284276.2
RefSeq Size:	1558 bp
RefSeq ORF:	861 bp
Locus ID:	327657
UniProt ID:	Q86WD7
Cytogenetics:	14q32.13
Protein Families:	Druggable Genome, Secreted Protein, Transmembrane
MW:	32.8 kDa
Gene Summary:	Protease inhibitor that inhibits trypsin and trypsin-like serine proteases (in vitro). Inhibits plasmin and thrombin with lower efficiency (in vitro).[UniProtKB/Swiss-Prot Function]