

Product datasheet for RC236981

PRAS40 (AKT1S1) (NM_001278160) Human Tagged ORF Clone

Product data:

Product Type:	Expression Plasmids
Product Name:	PRAS40 (AKT1S1) (NM_001278160) Human Tagged ORF Clone
Tag:	Myc-DDK
Symbol:	PRAS40
Synonyms:	Lobe; PRAS40
Mammalian Cell Selection:	Neomycin
Vector:	pCMV6-Entry (PS100001)
E. coli Selection:	Kanamycin (25 ug/mL)
ORF Nucleotide Sequence:	>RC236981 ORF sequence Red=Cloning site Blue=ORF Green=Tags(s)

TTTTGTAATACGACTCACTATAGGGCGCCGGGAATTCGTCGACTGGATCCGGTACCGAGGAGATCTGCC
GCC**CGATCGCC**

RCATGGCGTCGGGGCGCCCCGAGGAGCTGTGGGAGGCCGTGGTGGGGCCGCTGAGCGCTTCCGGGCCCCG
GACTGGCACGGAGCTGGTGTCTGACCAGCGCCCGCCGCCACACCCCGCCGGGCCCTGTGCCTAT
GCTGCCCATGGTCGAGGAGCCCTGGCGGAGGCAGCGCCGCTTGCCTCCACGACATCGCACTGGCCACA
GGGCTGCCACTGCTGCTCGGCCCTCTGCGCCCCACCAGCACAGCCACCCAGTCCCACACCCAGCCC
ACCCCGGCCTACCCTGGCCAGAGAGGACAACGAGGAGGACGAGGATGAGCCACAGAGACAGAGACTCC
GGGAGCAGCTGGGCATTAGTGATAATGGAGGGCTCTTTGTGATGGATGAGGACGCCACCCCTCCAGGACC
TTCCCCCTTCTGTGAGTCAGACCCGAGAGTACAGATGATGGCAGCCTGAGCGAGGAGACCCCGCCGG
CCCCCCACCTGCTCAGTGCCCCAGCCTCAGCCCTACCCACACAGCAGTACGCCAAGTCCCTGCCTGTG
TCTGTGCCCGTCTGGGGCTTCAAGGAGAAGAGGACAGAGGCGCGGTATCAGATGAGGAGAATGGGCCG
CCTTTCCGCCGACCTGGACCGCATCGCGGCGAGCATGCGCGCGCTGGTGTGCTGCGAGAGGCCGAGGACAC
CCAGGTCTTCGGGGACCTGCCACGGCCGCGCTTAACACCAGCGACTTCCAGAAGCTGAAGCGGAAATAT

ACGCGTACGCGGCCGCTCGAGCAGAACTCATCTCAGAAGAGGATCTGGCAGCAAATGATATCCTGGATT
ACAAGGATGACGACGATAAGGTTTAA



[View online »](#)

Protein Sequence: >RC236981 protein sequence
Red=Cloning site Green=Tags(s)

XWRRGAPRSCGRPWGPLSASGGLARSWCC*PRPRRHHPARAPVPLPMVEEPWRRQRAVASTTSHWPT
 GLPLLLGLLRPHQHSHPVPHPAHPGLWPPERTTRRTRMSPQRQRPFGSSWALVIMEGSL*WMRTPPSRT
 FPPSVSQTPRVQMAAA*ARRPPPAPPPAQCPQPYPHSSTPSPCLCLCPSGASRRRGQRRGHQMRMRGR
 PLRPTWTASRRACARWCCERPRTPRSSGTCHGRGLTPATSRS*SGN

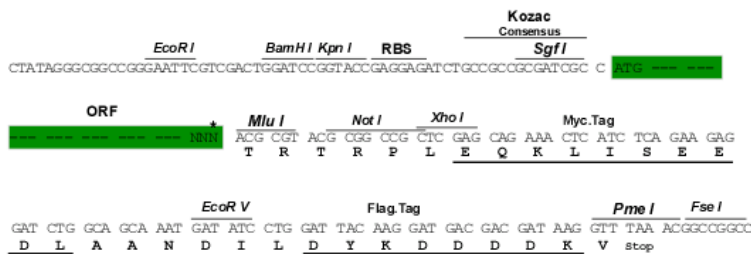
TRTRPLEQKLISEEDLAANDILDYKDDDDKV

Chromatograms: https://cdn.origene.com/chromatograms/mg4077_b01.zip

Restriction Sites: SgfI-MluI

Cloning Scheme:

Cloning sites used for ORF Shuttling:



* The last codon before the Stop codon of the ORF

ACCN: NM_001278160

ORF Size: 768 bp

OTI Disclaimer: The molecular sequence of this clone aligns with the gene accession number as a point of reference only. However, individual transcript sequences of the same gene can differ through naturally occurring variations (e.g. polymorphisms), each with its own valid existence. This clone is substantially in agreement with the reference, but a complete review of all prevailing variants is recommended prior to use. [More info](#)

OTI Annotation: This clone was engineered to express the complete ORF with an expression tag. Expression varies depending on the nature of the gene.

Components: The ORF clone is ion-exchange column purified and shipped in a 2D barcoded Matrix tube containing 10ug of transfection-ready, dried plasmid DNA (reconstitute with 100 ul of water).

Reconstitution Method:

1. Centrifuge at 5,000xg for 5min.
2. Carefully open the tube and add 100ul of sterile water to dissolve the DNA.
3. Close the tube and incubate for 10 minutes at room temperature.
4. Briefly vortex the tube and then do a quick spin (less than 5000xg) to concentrate the liquid at the bottom.
5. Store the suspended plasmid at -20°C. The DNA is stable for at least one year from date of shipping when stored at -20°C.

RefSeq: [NM_001278160.1](#), [NP_001265089.1](#)

RefSeq Size: 1849 bp

RefSeq ORF: 771 bp

Locus ID: 84335

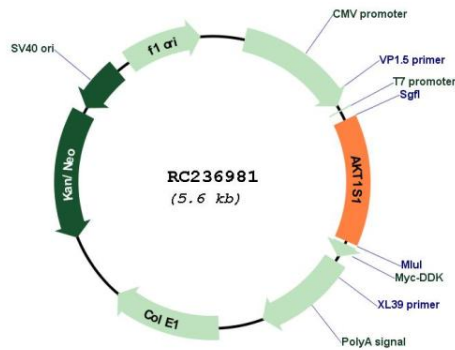
UniProt ID: [Q96B36](#)

Cytogenetics: 19q13.33

MW: 27.4 kDa

Gene Summary: AKT1S1 is a proline-rich substrate of AKT (MIM 164730) that binds 14-3-3 protein (see YWHAH, MIM 113508) when phosphorylated (Kovacina et al., 2003 [PubMed 12524439]).[supplied by OMIM, Mar 2008]

Product images:



Circular map for RC236981