

Product datasheet for **RC236856**

CLIC1 (NM_001287593) Human Tagged ORF Clone

Product data:

Product Type: Expression Plasmids
Product Name: CLIC1 (NM_001287593) Human Tagged ORF Clone
Tag: Myc-DDK
Symbol: CLIC1
Synonyms: CL1C1; CLCNL1; G6; NCC27
Mammalian Cell Selection: Neomycin
Vector: pCMV6-Entry (PS100001)
E. coli Selection: Kanamycin (25 ug/mL)
ORF Nucleotide Sequence: >RC236856 representing NM_001287593
 Red=Cloning site Blue=ORF Green=Tags(s)

TTTTGTAATACGACTCACTATAGGGCGGCCGGAATTCGTCGACTGGATCCGGTACCGAGGAGATCTGCC
 GCC**CGATCGCC**

ATGGCTGAAGAACAACCGCAGGTCGAATTGTTCTGTAAGGCTGGCAGTGATGGGGCCAAGATTGGGAACT
 GCCATTCTCCAGAGACTGTTTCATGGTACTGTGGCTCAAGGGAGTCACCTTCAATGTTACCACCGTTGA
 CACAAAAGGCGGACCGAGACAGTGCAGAAGCTGTGCCAGGGGGCAGCTCCATTCTGCTGTATGGC
 ACTGAAGTGCACACAGACACCAACAAGATTGAGGAATTTCTGGAGGCAGTGTGTGCCCTCCAGGTACC
 CCAAGCTGGCAGCTCTGAACCCTGAGTCCAACACAGCTGGGCTGGACATATTTGCCAAATTTCTGCCTA
 CATCAAGAATTCAAACCCAGCACTCAATGACAATCTGGAGAAGGGACTCCTGAAAGCCCTGAAGGTTTTA
 GACAATTACTTAACATCCCCCTCCAGAGAAGTGGATGAAACCAAGTGTGAAGATGAAGGTGTCTCTC
 AGAGGAAGTTTTGGATGGCAACGAGCTCACCTGGCTGACTGCAACCTGTTGCCAAAGTTACACATAGT
 ACAGGTGGTGTGAAGAAGTACCGGGATTACCATCCCCGAGGCCTCCGGGGAGTGCATCGGTACTTG
 AGCAATGCCTACGCCGGGAAGAATTCGCTTCCACCTGTCCAGATGATGAGGAGATCGAGCTCGCCTATG
 AGCAAGTGCCAAAGGCCCTCAA

ACGCGTACGCGGCCGCTCGAGCAGAACTCATCTCAGAAGAGGATCTGGCAGCAAATGATATCCTGGATT
 ACAAGGATGACGACGATAAGGTTTAA



[View online »](#)

Protein Sequence: >RC236856 representing NM_001287593
 Red=Cloning site Green=Tags(s)

MAEEQPQVELFVKAGSDGAKIGNCPFSQRLFMVLWLVKGVTFNVTVDTKRRTETVQKLCPPGGQLPFLLYG
 TEVHTDNTKIEEFLEAVLCPFRYPKLAALNPESNTAGLDIFAKFSAYIKNSNPALNDNLEKGLLKALKVL
 DNYLTSPLPEEVDETSAEDEGVSQRKFLDGNELTLADCNLLPKLHIVQVVCKKYRGFTIPEAFRGVHRYL
 SNAYAREEFASTCPDDEEIELAYEQVAKALK

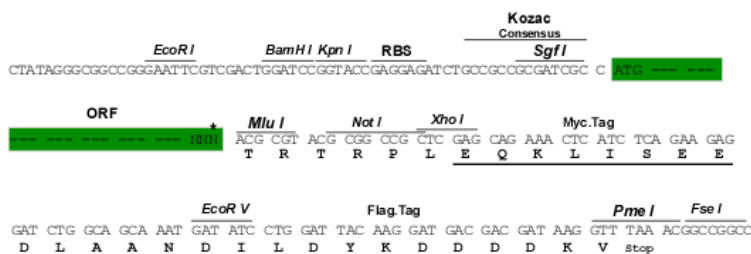
TRTRPLEQKLISEEDLAANDILDYKDDDDKV

Chromatograms: https://cdn.origene.com/chromatograms/mk6106_g02.zip

Restriction Sites: SgfI-MluI

Cloning Scheme:

Cloning sites used for ORF Shuttling:



* The last codon before the Stop codon of the ORF

ACCN: NM_001287593

ORF Size: 723 bp

OTI Disclaimer: The molecular sequence of this clone aligns with the gene accession number as a point of reference only. However, individual transcript sequences of the same gene can differ through naturally occurring variations (e.g. polymorphisms), each with its own valid existence. This clone is substantially in agreement with the reference, but a complete review of all prevailing variants is recommended prior to use. [More info](#)

OTI Annotation: This clone was engineered to express the complete ORF with an expression tag. Expression varies depending on the nature of the gene.

Components: The ORF clone is ion-exchange column purified and shipped in a 2D barcoded Matrix tube containing 10ug of transfection-ready, dried plasmid DNA (reconstitute with 100 ul of water).

Reconstitution Method:

1. Centrifuge at 5,000xg for 5min.
2. Carefully open the tube and add 100ul of sterile water to dissolve the DNA.
3. Close the tube and incubate for 10 minutes at room temperature.
4. Briefly vortex the tube and then do a quick spin (less than 5000xg) to concentrate the liquid at the bottom.
5. Store the suspended plasmid at -20°C. The DNA is stable for at least one year from date of shipping when stored at -20°C.

RefSeq: [NM_001287593.1](#), [NP_001274522.1](#)

RefSeq Size: 1574 bp

RefSeq ORF: 726 bp

Locus ID: 1192

UniProt ID: [O00299](#)

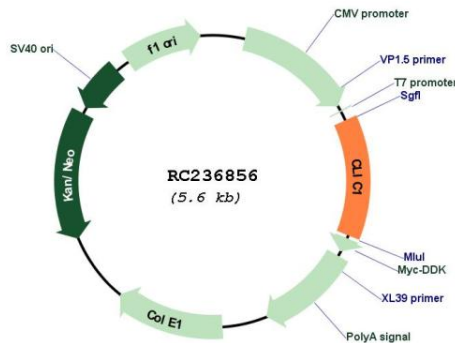
Cytogenetics: 6p21.33

Protein Families: Druggable Genome, Ion Channels: Other

MW: 26.9 kDa

Gene Summary: Chloride channels are a diverse group of proteins that regulate fundamental cellular processes including stabilization of cell membrane potential, transepithelial transport, maintenance of intracellular pH, and regulation of cell volume. Chloride intracellular channel 1 is a member of the p64 family; the protein localizes principally to the cell nucleus and exhibits both nuclear and plasma membrane chloride ion channel activity. [provided by RefSeq, Jul 2008]

Product images:



Circular map for RC236856