

Product datasheet for **RC236855**

ZCCHC17 (NM_001282568) Human Tagged ORF Clone

Product data:

| | |
|---------------------------|---|
| Product Type: | Expression Plasmids |
| Product Name: | ZCCHC17 (NM_001282568) Human Tagged ORF Clone |
| Tag: | Myc-DDK |
| Symbol: | ZCCHC17 |
| Synonyms: | HSPC251; pNO40; PS1D |
| Mammalian Cell Selection: | Neomycin |
| Vector: | pCMV6-Entry (PS100001) |
| E. coli Selection: | Kanamycin (25 ug/mL) |
| ORF Nucleotide Sequence: | >RC236855 ORF sequence Red=Cloning site Blue=ORF Green=Tags(s) |

TTTTGTAATACGACTCACTATAGGGCGCCGGGAATTCGTCGACTGGATCCGGTACCGAGGAGATCTGCC
GCC**CGATCGCC**

ATGAATTCAGGAAGGCCTGAGACCATGGAAAACCTGCCTGCTCTCTACACTATTTTCCAAGGAGAGGTTG
CTATGGTGACAGACTATGGGGCCTTTATCAAAATCCCAGGCTGTCGGAAGCAAGGTCTGGTCCATCGAAC
TCATATGTCATCCTGTCGGTGGATAAGCCCTCTGAGATAGTAGATGTTGGAGATAAAGTGTGGGTGAAG
CTTATTGGCCGAGAGATAAAAATGATAGAATAAAAGTATCCCTCTCCATGAAGTTGTCAATCAAGGGA
CTGGGAAAGACCTTGATCCCAACAATGTTATCATTGAGCAAGAAGAGAGGCGGAGGCGATCCTTCCAGGA
TTACACTGGGCAGAAGATCACCTTGAGGCTGTCTTGAACACTACCTGCAAGAAGTGTGGCTGTAAGGC
CACTTTGCAAAAGATTGTTTCATGCAACCAGGTGGGACTAAATACTCTCTGATACCTGATGAGGAAGAGG
AAAAGGAAGAGGCAAAGTCAGCAGAGTTTGAGAAGCCTGACCCTACAAGGAATCCTTCTAGAAAAAGAAA
GAAGGAGAAGAAGAAAAAGAAACATAGAGATAGGAAGTCATCTGACTCTGACAGCTCAGACTCTGAGAGT
GATACAGGCAAGAGGGCAAGGCACACATCAAAAGACAGCAAGGCAGCAAGAAGAAGAAAAAGAAGAAGA
AGCACAAGAAGAAGCACAAGGAG

ACGCGTACGCGGCCGCTCGAGCAGAAACTCATCTCAGAAGAGGATCTGGCAGCAAATGATATCCTGGATT
ACAAGGATGACGACGATAAGGTTTAA



[View online »](#)

Protein Sequence: >RC236855 protein sequence
Red=Cloning site Green=Tags(s)

MNSGRPETMENLPALYTIHQGEVAMVTDYGAFIKIPGCRKQGLVHRTHMSSCRVDKPEIVDVGDKVWVK
 LIGREMKNDRIKVSLSMKVVNQGTGKLDLDPNNVIEQEERRRRSFQDYTGQKITLEAVLNTTCKKCGCKG
 HFAKDCFMQPGGTKYSLIPDEEEEEKEAKSAFEKPDPTRNPSRKRKKEKKKKKHKRDRKSSDSDSDSDSES
 DTGKRARHTSKDSKAAKKKKKKKKKKHKE

TRTRPLEQKLISEEDLAANDILDYKDDDDKV

Chromatograms: https://cdn.origene.com/chromatograms/mk6362_a09.zip

Restriction Sites: SgfI-MluI

Cloning Scheme:



ACCN: NM_001282568

ORF Size: 723 bp

OTI Disclaimer: The molecular sequence of this clone aligns with the gene accession number as a point of reference only. However, individual transcript sequences of the same gene can differ through naturally occurring variations (e.g. polymorphisms), each with its own valid existence. This clone is substantially in agreement with the reference, but a complete review of all prevailing variants is recommended prior to use. [More info](#)

OTI Annotation: This clone was engineered to express the complete ORF with an expression tag. Expression varies depending on the nature of the gene.

Components: The ORF clone is ion-exchange column purified and shipped in a 2D barcoded Matrix tube containing 10ug of transfection-ready, dried plasmid DNA (reconstitute with 100 ul of water).

Reconstitution Method:

1. Centrifuge at 5,000xg for 5min.
2. Carefully open the tube and add 100ul of sterile water to dissolve the DNA.
3. Close the tube and incubate for 10 minutes at room temperature.
4. Briefly vortex the tube and then do a quick spin (less than 5000xg) to concentrate the liquid at the bottom.
5. Store the suspended plasmid at -20°C. The DNA is stable for at least one year from date of shipping when stored at -20°C.

RefSeq: [NM_001282568.1](#), [NP_001269497.1](#)

RefSeq Size: 1773 bp

RefSeq ORF: 726 bp

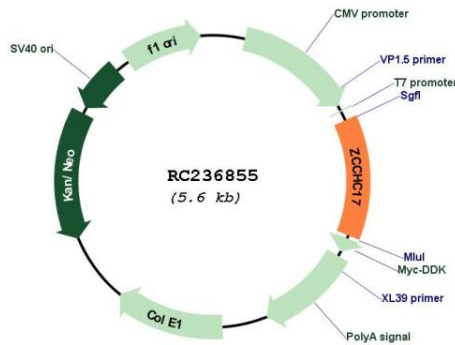
Locus ID: 51538

UniProt ID: [Q9NP64](#)

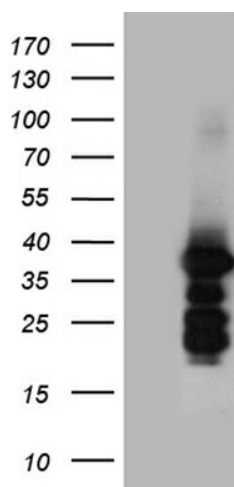
Cytogenetics: 1p35.2

MW: 27.6 kDa

Product images:



Circular map for RC236855



HEK293T cells were transfected with the pCMV6-ENTRY control (Cat# [PS100001], Left lane) or pCMV6-ENTRY ZCCHC17 (Cat# RC236855, Right lane) cDNA for 48 hrs and lysed. Equivalent amounts of cell lysates (5 ug per lane) were separated by SDS-PAGE and immunoblotted with anti-ZCCHC17 (Cat# [TA809552])(1:500). Positive lysates [LY413942] (100ug) and [LC413942] (20ug) can be purchased separately from OriGene.