

Product datasheet for **RC236777**

ZCCHC17 (NM_001282569) Human Tagged ORF Clone

Product data:

Product Type:	Expression Plasmids
Product Name:	ZCCHC17 (NM_001282569) Human Tagged ORF Clone
Tag:	Myc-DDK
Symbol:	ZCCHC17
Synonyms:	HSPC251; pNO40; PS1D
Vector:	pCMV6-Entry (PS100001)
E. coli Selection:	Kanamycin (25 ug/mL)
Cell Selection:	Neomycin
ORF Nucleotide Sequence:	>RC236777 representing NM_001282569 Red=Cloning site Blue=ORF Green=Tags(s)

TTTTGTAATACGACTCACTATAGGGCGGCCGGAATTCGTCGACTGGATCCGGTACCGAGGAGATCTGCC
GCC**CGATCGCC**

ATGAAGCAGCTAATTGAAGACACTGAAAAGAATAAAGTTTATGTTGCTATGGTGACAGACTATGGGGCCT
TTATCAAATCCCAGGCTGTCGGAAGCAAGGTCTGGTCCATCGAACTCATATGTCATCCTGTCGGGTGGA
TAAGCCCTCTGAGATAGTAGATGTTGGAGATAAAGTGTGGGTGAAGCTTATTGGCCGAGAGATGAAAAA
GATAGAATAAAAGTATCCCTCTCCATGAAGTTGTCAATCAAGGGACTGGGAAAGACCTTGATCCCAACA
ATGTTATCATTGAGCAAGAAGAGAGGCGGAGGCGATCCTTCCAGGATTACACTGGGCAGAAGATCACCCCT
TGAGGCTGTCTTGAACACTACCTGCAAGAAGTGTGGCTGTAAGGCCACTTTGCAAAAGATTGTTTCATG
CAACCAGGTGGGACTAAATACTCTCTGATACCTGATGAGGAAGAGGAAAAGGAAGAGGCAAAGTCAGCAG
AGTTTGAGAAGCCTGACCCTACAAGGAATCCTTCTAGAAAAAGAAAGGAGAAGAAGAAAAAGAAACA
TAGAGATAGGAAGTCATCTGACTCTGACAGCTCAGACTCTGAGAGTGATACAGGCAAGAGGGCAAGGCAC
ACATCAAAGACAGCAAGGCAGCAAAGAAGAAGAAAAAGAAGAAGCACAAGAAGAAGCACAAGGAG

ACGCGTACGCGGCCGCTCGAGCAGAACTCATCTCAGAAGAGGATCTGGCAGCAAATGATATCCTGGATT
ACAAGGATGACGACGATAAGGTTTAA



[View online »](#)

Protein Sequence: >RC236777 representing NM_001282569
 Red=Cloning site Green=Tags(s)

MKQLIEDTEKNKYVYVAMVTDYGAFIKIPGCRKQGLVHRTHMSSCRVDPSEIVDVGDKVWVKLIGREMKN
 DRIKVSLSMKVVNQGTGKDLDPNNVIEQEERRRRSFQDYTGQKITLEAVLNTTCKKCGCKGHFAKDCFM
 QPGGTKYSLIPDEEEEEKEAKSAEFKPDPTRNPSRKRKKEKKKKKHRDRKSSDSDSSDSESDTKGRARH
 TSKDSKAAKKKKKKKKKKHKE

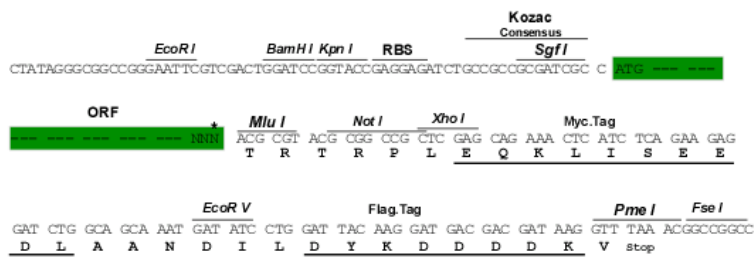
TRTRPLEQKLISEEDLAANDILDYKDDDDKV

Restriction Sites:

Sgfl-MluI

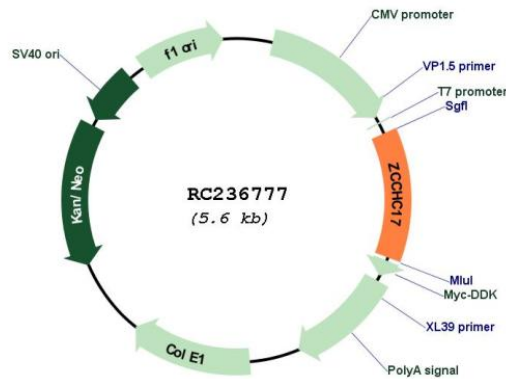
Cloning Scheme:

Cloning sites used for ORF Shuttling:



* The last codon before the Stop codon of the ORF

Plasmid Map:



ACCN: NM_001282569

ORF Size: 699 bp

OTI Disclaimer:	The molecular sequence of this clone aligns with the gene accession number as a point of reference only. However, individual transcript sequences of the same gene can differ through naturally occurring variations (e.g. polymorphisms), each with its own valid existence. This clone is substantially in agreement with the reference, but a complete review of all prevailing variants is recommended prior to use. More info
OTI Annotation:	This clone was engineered to express the complete ORF with an expression tag. Expression varies depending on the nature of the gene.
Components:	The ORF clone is ion-exchange column purified and shipped in a 2D barcoded Matrix tube containing 10ug of transfection-ready, dried plasmid DNA (reconstitute with 100 ul of water).
Reconstitution Method:	<ol style="list-style-type: none">1. Centrifuge at 5,000xg for 5min.2. Carefully open the tube and add 100ul of sterile water to dissolve the DNA.3. Close the tube and incubate for 10 minutes at room temperature.4. Briefly vortex the tube and then do a quick spin (less than 5000xg) to concentrate the liquid at the bottom.5. Store the suspended plasmid at -20°C. The DNA is stable for at least one year from date of shipping when stored at -20°C.
RefSeq:	NM_001282569.1 , NP_001269498.1
RefSeq Size:	1705 bp
RefSeq ORF:	702 bp
Locus ID:	51538
UniProt ID:	Q9NP64
Cytogenetics:	1p35.2
MW:	27.3 kDa