

Product datasheet for **RC236771**

TPD52 (NM_001287143) Human Tagged ORF Clone

Product data:

Product Type: Expression Plasmids
Product Name: TPD52 (NM_001287143) Human Tagged ORF Clone
Tag: Myc-DDK
Symbol: TPD52
Synonyms: D52; hD52; N8L; PC-1; PrLZ
Vector: pCMV6-Entry (PS100001)
E. coli Selection: Kanamycin (25 ug/mL)
Cell Selection: Neomycin
ORF Nucleotide Sequence: >RC236771 representing NM_001287143
Red=Cloning site Blue=ORF Green=Tags(s)

TTTTGTAATACGACTCACTATAGGGCGGCCGGAATTCGTCGACTGGATCCGGTACCGAGGAGATCTGCC
GCC**CGATCGC**C

ATGGATTGTAGAGAGATGGACTTATATGAGGACTACCAGTCCCCGTTTGATTTTGATGCAGGAGTGAACA
AAAGCTATCTCTACTTGTCTCCTAGTGAAATTCATCTCCACCCGGATCACCTACTCTTCAGAAATTTGG
TCTGCTGAGAACAGACCCAGTCCCTGAGGAAGGAGAAGATGTTGCTGCCACGATCAGTGCCACAGAGACC
CTCTCGGAAGAGGAGCAGGAAGAGCTAAGAAGAGAACTTGCAAAGGTAGAAGAAGAAATCCAGACTCTGT
CTCAAGTGTAGCAGCAAAAGAGAAGCATCTAGCAGAGATCAAGCGGAAACTTGGAAATCAATTTCTTACA
GAACTAAAACAGAACATTGCCAAAGGGTGGCAAGACGTGACAGCAACATCTGCTTACAAGAAGACATCT
GAAACCTTATCCCAGGCTGGACAGAAGGCCTCAGCTGCTTTTTCGTCTGTTGGCTCAGTCATCACAAAA
AGCTGGAAGATGTAAAATTGCAAGCCTTTTACATTCCTTTAGAACTCCCAACTTTTAAATCATTGTA
AGAAAAGGTCGAAAACCTAAAGTCTAAAGTAGGGGAACCAAGCCTGCTGGTGGTATTTGGAGAAGTC
TTGAATTCGGCTGCAATGCTAGTGCCACCACCACGGAGCCTCTCCAGAAAAGACACAGGAGAGCCTG

ACGCGTACGCGGCCGCTCGAGCAGAACTCATCTCAGAAGAGGATCTGGCAGCAAATGATATCCTGGATT
ACAAGGATGACGACGATAAGGTTTAA



[View online »](#)

Protein Sequence: >RC236771 representing NM_001287143
 Red=Cloning site Green=Tags(s)

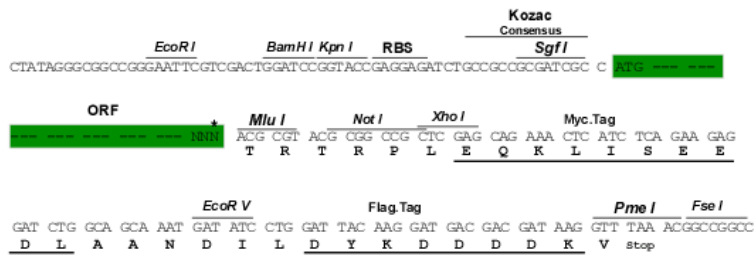
MDCREMDLYEDYQSPFDAGVNKSYLYLSPSGNSSPPGSPTLQKFGLLRTPVPEEGEDVAATISATET
 LSEEEQEELRRELAKVEEEIQTL SQVLAKEKHLAEIKRKLGINSLQELKQNIAGWQDVTATSAYKKTS
 ETL SQAGQKASAAAFSSVGSVITKKLEDVKLQAFSHSFRNSPTFKSFEEKVENLKSQVGGTKPAGGDFGEV
 LNSAANASATTEPLEKTQESL

TRTRPLEQKLISEEDLAANDILDYKDDDDKV

Restriction Sites: SgfI-MluI

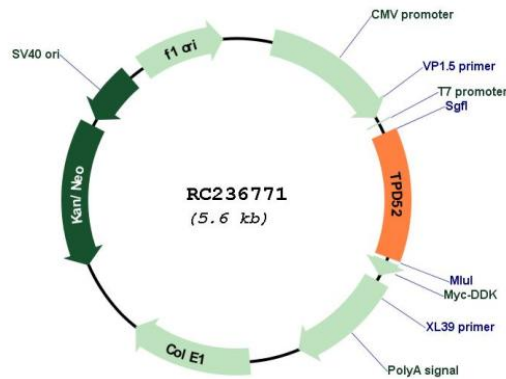
Cloning Scheme:

Cloning sites used for ORF Shuttling:



* The last codon before the Stop codon of the ORF

Plasmid Map:



ACCN: NM_001287143

ORF Size: 699 bp

OTI Disclaimer:	The molecular sequence of this clone aligns with the gene accession number as a point of reference only. However, individual transcript sequences of the same gene can differ through naturally occurring variations (e.g. polymorphisms), each with its own valid existence. This clone is substantially in agreement with the reference, but a complete review of all prevailing variants is recommended prior to use. More info
OTI Annotation:	This clone was engineered to express the complete ORF with an expression tag. Expression varies depending on the nature of the gene.
Components:	The ORF clone is ion-exchange column purified and shipped in a 2D barcoded Matrix tube containing 10ug of transfection-ready, dried plasmid DNA (reconstitute with 100 ul of water).
Reconstitution Method:	<ol style="list-style-type: none">1. Centrifuge at 5,000xg for 5min.2. Carefully open the tube and add 100ul of sterile water to dissolve the DNA.3. Close the tube and incubate for 10 minutes at room temperature.4. Briefly vortex the tube and then do a quick spin (less than 5000xg) to concentrate the liquid at the bottom.5. Store the suspended plasmid at -20°C. The DNA is stable for at least one year from date of shipping when stored at -20°C.
RefSeq:	NM_001287143.2
RefSeq Size:	4340 bp
RefSeq ORF:	702 bp
Locus ID:	7163
UniProt ID:	P55327
Cytogenetics:	8q21.13
MW:	25.9 kDa