

Product datasheet for **RC236695**

METTL11A (NTMT1) (NM_001286796) Human Tagged ORF Clone

Product data:

Product Type:	Expression Plasmids
Product Name:	METTL11A (NTMT1) (NM_001286796) Human Tagged ORF Clone
Tag:	Myc-DDK
Symbol:	METTL11A
Synonyms:	AD-003; C9orf32; HOMET1A; METTL11A; NRMT; NRMT1; NTM1A
Mammalian Cell Selection:	Neomycin
Vector:	pCMV6-Entry (PS100001)
E. coli Selection:	Kanamycin (25 ug/mL)
ORF Nucleotide Sequence:	>RC236695 ORF sequence Red=Cloning site Blue=ORF Green=Tags(s)

TTTTGTAATACGACTCACTATAGGGCGGCCGGAATTCGTCGACTGGATCCGGTACCGAGGAGATCTGCC
GCC**CGATCGCC**

ATGACGAGCGAGGTGATAGAAGACGAGAAGCAATTCTATTCCAAGGCCAAGACCTACTGGAACAAATCC
CACCCACGGTGGACGGCATGCTTGGGGGTATGGCCACATCTCCAGCATCGACATCAACAGCTCCCGGAA
GTTTCTGCAGAGGTTTTGAGGGAAGGCCGAACAAGACAGGAACGTCTGTGCCCTGGACTGTGGAGCT
GGCATTGGGAGGATCACCAAGCGGCTGCTCCTGCCGTGTTGAGAGGTTGGATATGGTCGACATAACGG
AGGACTTCCTGGTCAAGCCAAGACCTACCTGGGGGAGGAGGCAAGAGGTTGAGGAACACTTCTGTTG
TGGGCTCCAGGACTTCACCCCGGAGCCGGACTTACGACGTGATCTGGATCCAGTGGGTGATAGGCCAC
CTCACCGATCAGCACCTGGCCGAGTTCCTGCGGCGCTGCAAGGGCAGCCTCCGCCCAACGGCATCATCG
TCATCAAAGACAACATGGCCAGGAGGGCGTGATTCTGGACGACGTGGACAGCAGCGTGTCCGGGACCT
TGACGTGGTCCGAGGATCATCTGCAGTGCAGGCCTCAGCCTCCTGGCCGAGGAGGCAAGGAGAACCTC
CCCGATGAGATCTACCATGTCTATAGCTTTGCCCTGAGA

ACGCGTACGCGGGCCGCTCGAGCAGAACTCATCTCAGAAGAGGATCTGGCAGCAAATGATATCCTGGATT
ACAAGGATGACGACGATAAGGTTTAA



[View online »](#)

Protein Sequence: >RC236695 protein sequence
Red=Cloning site Green=Tags(s)

MTSEVIEDEKQFYSAKTYWKQIPPTVDGMLGGYGHISIDINSSRKFLQRFLREGPNKGTSCALDCGA
 GIGRITKRLLLPLFREVDMDITEDFLVQAKTYLGEEGKRVRYFCGLQDFTPEPDSYDVIWIQWVIGH
 LTDQHLAEFLRRCKGSLRPNGIIVIKDNMAQEGVILDDVDSSVCRDLDVVRRRIICSAGLSLLAEERQENL
 PDEIYHVYSFALR

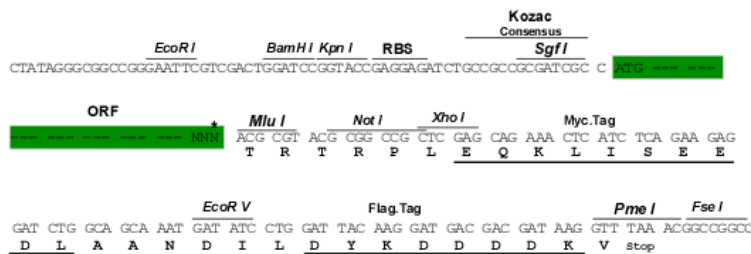
TRTRPLEQKLISEEDLAANDILDYKDDDDKV

Chromatograms: https://cdn.origene.com/chromatograms/mk6385_g08.zip

Restriction Sites: SgfI-MluI

Cloning Scheme:

Cloning sites used for ORF Shuttling:



* The last codon before the Stop codon of the ORF

ACCN: NM_001286796

ORF Size: 669 bp

OTI Disclaimer: The molecular sequence of this clone aligns with the gene accession number as a point of reference only. However, individual transcript sequences of the same gene can differ through naturally occurring variations (e.g. polymorphisms), each with its own valid existence. This clone is substantially in agreement with the reference, but a complete review of all prevailing variants is recommended prior to use. [More info](#)

OTI Annotation: This clone was engineered to express the complete ORF with an expression tag. Expression varies depending on the nature of the gene.

Components: The ORF clone is ion-exchange column purified and shipped in a 2D barcoded Matrix tube containing 10ug of transfection-ready, dried plasmid DNA (reconstitute with 100 ul of water).

Reconstitution Method:

1. Centrifuge at 5,000xg for 5min.
2. Carefully open the tube and add 100ul of sterile water to dissolve the DNA.
3. Close the tube and incubate for 10 minutes at room temperature.
4. Briefly vortex the tube and then do a quick spin (less than 5000xg) to concentrate the liquid at the bottom.
5. Store the suspended plasmid at -20°C. The DNA is stable for at least one year from date of shipping when stored at -20°C.

RefSeq: [NM_001286796.1](#), [NP_001273725.1](#)

RefSeq Size: 1688 bp

RefSeq ORF: 672 bp

Locus ID: 28989

UniProt ID: [Q9BV86](#)

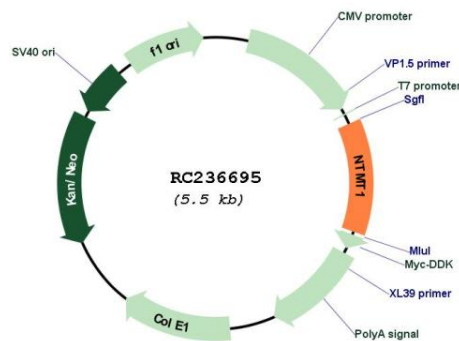
Cytogenetics: 9q34.11

Protein Families: Druggable Genome

MW: 25.4 kDa

Gene Summary: The METTL11A gene encodes an N-terminal methyltransferase for the RAN (MIM 601179) guanine nucleotide exchange factor regulator of chromosome condensation 1 (RCC1; MIM 179710). METTL11A enzyme alpha-N-methylates other protein targets such as SET (MIM 600960) and RB (MIM 180200).[supplied by OMIM, Nov 2010]

Product images:



Circular map for RC236695