

Product datasheet for **RC236687**

TPD52L2 (NM_001243895) Human Tagged ORF Clone

Product data:

Product Type:	Expression Plasmids
Product Name:	TPD52L2 (NM_001243895) Human Tagged ORF Clone
Tag:	Myc-DDK
Symbol:	TPD52L2
Synonyms:	D54; TPD54
Vector:	pCMV6-Entry (PS100001)
E. coli Selection:	Kanamycin (25 ug/mL)
Cell Selection:	Neomycin
ORF Nucleotide Sequence:	>RC236687 representing NM_001243895 Red=Cloning site Blue=ORF Green=Tags(s)

TTTTGTAATACGACTCACTATAGGGCGGCCGGAATTCGTCGACTGGATCCGGTACCGAGGAGATCTGCC
GCC**GCGATCGCC**

ATGGACTCGCCCGCCAAGATATCAACCTGAATTCTCCTAACAAGGTCTGCTGTCTGACTCCATGACGG
ATGTTCTGTGACACAGGTGTGGCTGCCCGACTCCTGCTGTTGAGGGTCTGACAGAGGCTGAGGAGGA
GGAGCTCAGGGCTGAGCTTACCAAGGTGGAAGAGGAAATTGTCACTCTGCGCCAGGTCTGGCAGCCAAG
GAGAGGCACTGTGGAGAGCTCAAGAGGAGGCTGGGCCTCTCCACCCTGGGGGAGCTGAAACAGAACCTGT
CCAGGAGCTGGCATGACGTGCAGGTCTCTAGCGCTATGTGAAAACCTCTGAGAACTTGGAGAGTGGAA
TGAGAAAGTGACCCAGTCAGACCTCTACAAGAAGACTCAGGAACTCTTTCACAGGCAGGACAGAAGACT
TCAGCTGCCCTGTCCACAGTGGGCTCTGCCATCAGCAGGAAGCTTGGAGACATGAGTCTAAGGTTGTGGG
TGACAGAGAGAACGGCAGTGACAACCTCCCTTCTCAGCGGGGAGTGGTGACAAGCCCCTGTCGGATCCC
GCACCTTTCTAAGCCTGTGGTTGCTTACCCGCTGCAGAGCACACGCAACCCAGCCTCAGCATCACAGCC
GCAGCTCTGTTAGCGGAGCAGCCAGCCAGGGCGGA

ACGCGTACGCGGCGCTCGAGCAGAACTCATCTCAGAAGAGGATCTGGCAGCAAATGATATCCTGGATT
ACAAGGATGACGACGATAAGGTTTAA



[View online »](#)

Protein Sequence: >RC236687 representing NM_001243895
 Red=Cloning site Green=Tags(s)

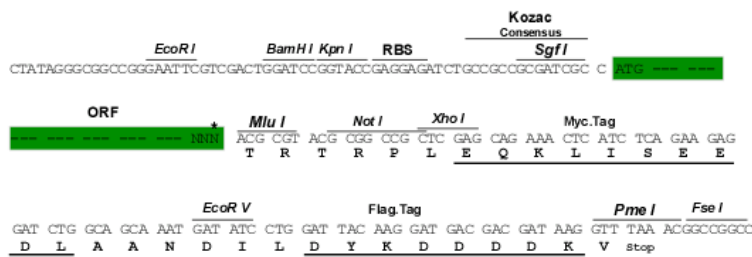
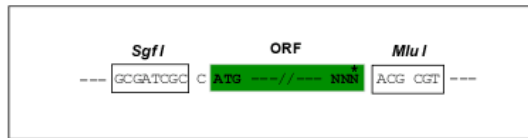
MDSAGQDINLNSPNKGLLSDSMTDVPVDTGVAARTPAVEGLTEAEEEEELRAELTKVEEEIVTLRQVLAAK
 ERHCGELKRRLGLSTLGELKQNLRSWHDVQVSSAYVKTSEKLGEWNEKVTQSDLYKKTQETLSQAGQKT
 SAALSTVGS AISRKLGDMSLRLWV TERTAVT TSLPQRGVV TSPCRIPHL SKPVVASPA AEHTQPSLSITA
 AALFSGAASQGG

TRTRPLEQKLISEEDLAANDILDYKDDDDKV

Restriction Sites: SgfI-MluI

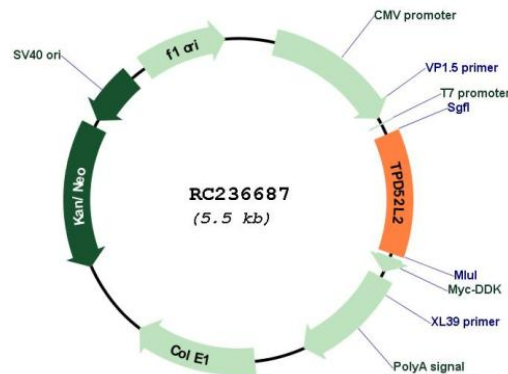
Cloning Scheme:

Cloning sites used for ORF Shuttling:



* The last codon before the Stop codon of the ORF

Plasmid Map:



ACCN: NM_001243895

ORF Size: 666 bp

OTI Disclaimer:	The molecular sequence of this clone aligns with the gene accession number as a point of reference only. However, individual transcript sequences of the same gene can differ through naturally occurring variations (e.g. polymorphisms), each with its own valid existence. This clone is substantially in agreement with the reference, but a complete review of all prevailing variants is recommended prior to use. More info
OTI Annotation:	This clone was engineered to express the complete ORF with an expression tag. Expression varies depending on the nature of the gene.
Components:	The ORF clone is ion-exchange column purified and shipped in a 2D barcoded Matrix tube containing 10ug of transfection-ready, dried plasmid DNA (reconstitute with 100 ul of water).
Reconstitution Method:	<ol style="list-style-type: none">1. Centrifuge at 5,000xg for 5min.2. Carefully open the tube and add 100ul of sterile water to dissolve the DNA.3. Close the tube and incubate for 10 minutes at room temperature.4. Briefly vortex the tube and then do a quick spin (less than 5000xg) to concentrate the liquid at the bottom.5. Store the suspended plasmid at -20°C. The DNA is stable for at least one year from date of shipping when stored at -20°C.
RefSeq:	NM_001243895.1 , NP_001230824.1
RefSeq Size:	2310 bp
RefSeq ORF:	669 bp
Locus ID:	7165
Cytogenetics:	20q13.33
MW:	24.2 kDa
Gene Summary:	This gene encodes a member of the tumor protein D52-like family. These proteins are characterized by an N-terminal coiled-coil motif that is used to form homo- and heteromeric complexes with other tumor protein D52-like proteins. Expression of this gene may be a marker for breast cancer and acute lymphoblastic leukemia. Alternatively spliced transcript variants encoding multiple isoforms have been observed for this gene, and a pseudogene of this gene is located on the long arm of chromosome 12. [provided by RefSeq, Aug 2011]