

## Product datasheet for **RC236683**

### TTC39A (NM\_001297666) Human Tagged ORF Clone

#### Product data:

**Product Type:** Expression Plasmids  
**Product Name:** TTC39A (NM\_001297666) Human Tagged ORF Clone  
**Tag:** Myc-DDK  
**Symbol:** TTC39A  
**Synonyms:** C1orf34; DEME-6  
**Vector:** pCMV6-Entry (PS100001)  
**E. coli Selection:** Kanamycin (25 ug/mL)  
**Cell Selection:** Neomycin  
**ORF Nucleotide Sequence:** >RC236683 representing NM\_001297666  
Red=Cloning site Blue=ORF Green=Tags(s)

TTTTGTAATACGACTCACTATAGGGCGGCCGGAATTCGTCGACTGGATCCGGTACCGAGGAGATCTGCC  
GCC**CGGATCGCC**

ATGAAGGCCGCCTACCTCAGCATGTTTGGGAAGGAGGACCACAAGCCGTTGGGGACGACGAAGTGAAT  
TATTTTCGAGCTGTGCCAGGCCTGAAGCTCAAGATTGCTGGGAAATCTCTACCCACAGAGAAGTTTCCAT  
CCGGAAGTCCCGCGCTACTTCTCCTCCAACCCTATCTCGCTGCCAGTGCCTGCTCTGGAATGATGTAC  
ATCTGGAACGGCTACGCCGTGATTGGGAAGCAGCCGAAACTCACGGATGGGATACTTGAGATTATCTACTA  
AGGCTGAAGAGATGCTGGAGAAAGGCCAGAGAACGAGTACTCAGTGGATGACGAGTGCCTGGTGAAT  
GTTGAAAGGCCTGTGTCTGAAATACCTGGGCCGTGCCAGGAGCCGAGGAGAATTTTAGGAGCATCTCT  
GCCAATGAAAAGAAGATTAATATGACCACTACTTGATCCCAAACGCCCTGCTGGAGCTGGCCCTGCTGC  
TTATGGAGCAAGACAGAAACGAAGAGGCCATCAAACCTTTGGAATCTGCCAAGCAAACTACAAGAATTA  
CTCCATGGAGTCAAGGACACACTTTCGAATCCAGGCAGCCACACTCCAAGCCAAGTCTTCCTTAGAGAAC  
AGCAGCAGATCCATGGTCTCATCAGTGCCTTG

**ACGCGT**ACGCGGCCGCTCGAGCAGAAACTCATCTCAGAAGAGGATCTGGCAGCAAATGATATCCTGGATT  
ACAAGGATGACGACGATAAGGTTTAA



[View online »](#)

Protein Sequence: >RC236683 representing NM\_001297666  
 Red=Cloning site Green=Tags(s)

MKAAAYLSMFGKEDHKPFQDDEVELFRAVPLKLIKAGKSLPTEKFAIRKSRRYFSSNPISLPVPALEMMY  
 IWNGYAVIGKQPKLTDGILEIITKAEEMLEKGPENEYSVDDECLVKLLKGLCLKYLGRVQEAEEENFRSIS  
 ANEKKIKYDHYLIPNALLELALLLMEQDRNEEAIKLLES AKQNYKNYSMESRTHFRIQAATLQAKSSLEN  
 SSRSMVSSVSL

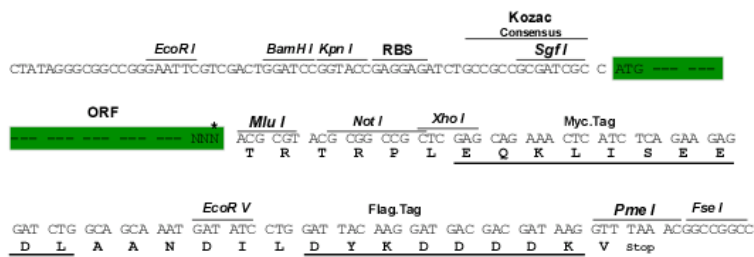
TRTRPLEQKLISEEDLAANDILDYKDDDDKV

Restriction Sites:

Sgfl-MluI

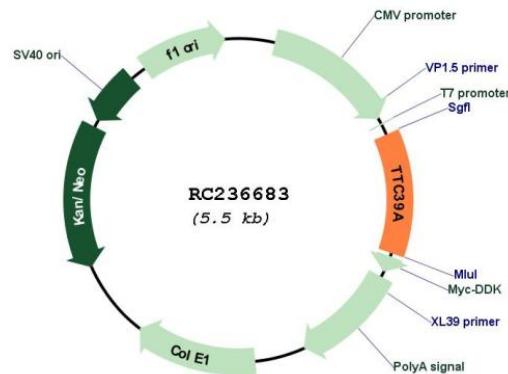
Cloning Scheme:

Cloning sites used for ORF Shuttling:



\* The last codon before the Stop codon of the ORF

Plasmid Map:



ACCN: NM\_001297666

ORF Size: 663 bp

|                               |   |
|-------------------------------|---|
| <b>OTI Disclaimer:</b>        | The molecular sequence of this clone aligns with the gene accession number as a point of reference only. However, individual transcript sequences of the same gene can differ through naturally occurring variations (e.g. polymorphisms), each with its own valid existence. This clone is substantially in agreement with the reference, but a complete review of all prevailing variants is recommended prior to use. <a href="#">More info</a>  |
| <b>OTI Annotation:</b>        | This clone was engineered to express the complete ORF with an expression tag. Expression varies depending on the nature of the gene.  |
| <b>Components:</b>            | The ORF clone is ion-exchange column purified and shipped in a 2D barcoded Matrix tube containing 10ug of transfection-ready, dried plasmid DNA (reconstitute with 100 ul of water).  |
| <b>Reconstitution Method:</b> | <ol style="list-style-type: none"><li>1. Centrifuge at 5,000xg for 5min.</li><li>2. Carefully open the tube and add 100ul of sterile water to dissolve the DNA.</li><li>3. Close the tube and incubate for 10 minutes at room temperature.</li><li>4. Briefly vortex the tube and then do a quick spin (less than 5000xg) to concentrate the liquid at the bottom.</li><li>5. Store the suspended plasmid at -20°C. The DNA is stable for at least one year from date of shipping when stored at -20°C.</li></ol> |
| <b>RefSeq:</b>                | <a href="#">NM_001297666.1</a> , <a href="#">NP_001284595.1</a>   |
| <b>RefSeq Size:</b>           | 1769 bp   |
| <b>RefSeq ORF:</b>            | 666 bp  |
| <b>Locus ID:</b>              | 22996   |
| <b>UniProt ID:</b>            | <a href="#">Q5SRH9</a>  |
| <b>Cytogenetics:</b>          | 1p32.3  |
| <b>MW:</b>                    | 25.6 kDa  |