

## Product datasheet for **RC236650**

### ZCCHC17 (NM\_001282570) Human Tagged ORF Clone

#### Product data:

Product Type:	Expression Plasmids
Product Name:	ZCCHC17 (NM_001282570) Human Tagged ORF Clone
Tag:	Myc-DDK
Symbol:	ZCCHC17
Synonyms:	HSPC251; pNO40; PS1D
Vector:	pCMV6-Entry (PS100001)
E. coli Selection:	Kanamycin (25 ug/mL)
Cell Selection:	Neomycin
ORF Nucleotide Sequence:	>RC236650 representing NM_001282570 Red=Cloning site Blue=ORF Green=Tags(s)

TTTTGTAATACGACTCACTATAGGGCGGCCGGAATTCGTCGACTGGATCCGGTACCGAGGAGATCTGCC  
GCC**CGATCGC**C

ATGGTGACAGACTATGGGCCTTTATCAAATCCCAGGCTGTCCGAAGCAAGGTCTGGTCCATCGAACTC  
ATATGTCATCCTGTCGGGTGGATAAGCCCTCTGAGATAGTAGATGTTGGAGATAAAGTGTGGGTGAAGCT  
TATTGGCCGAGAGATGAAAAATGATAGAATAAAAGTATCCCTCTCCATGAAGTTGTCAATCAAGGGACT  
GGGAAAGACCTTGATCCCAACAATGTTATCATTGAGCAAGAAGAGAGGGCGAGGGCATCCTTCCAGGATT  
ACACTGGGCAGAAGATCACCTTGAGGCTGTCTTGAACACTACCTGCAAGAAGTGTGGCTGTAAAGGCCA  
CTTTGCAAAAGATTGTTTCATGCAACCAGGTGGGACTAAATACTCTCTGATACCTGATGAGGAAGAGGAA  
AAGGAAGAGGCAAGTCAGCAGAGTTTGAGAAGCCTGACCCTACAAGGAATCCTTCTAGAAAAAGAAAGA  
AGGAGAAGAAGAAAAAGAAACATAGAGATAGGAAGTCATCTGACTCTGACAGCTCAGACTCTGAGAGTGA  
TACAGGCAAGAGGGCAAGGCACACATCAAAGACAGCAAGGCAGCAAGAAGAAGAAAAAGAAAGAAGAAG  
CACAAGAAGAAGCACAAGGAG

**ACGCGT**ACGCGGCCGCTCGAGCAGAACTCATCTCAGAAGAGGATCTGGCAGCAAATGATATCCTGGATT  
ACAAGGATGACGACGATAAGGTTTAA



[View online »](#)

**Protein Sequence:** >RC236650 representing NM\_001282570  
 Red=Cloning site Green=Tags(s)

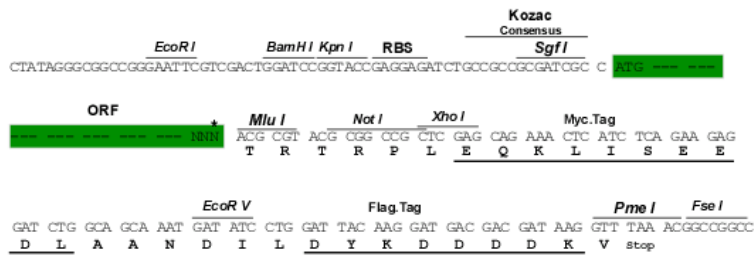
MVTDYGAFIKIPGCRKQGLVHRTHMSSCRVDPKSEIVDVGDKVWVKLIGREMKNDRIKVLSLSMKVVNQGT  
 GKDLDPNNVIEQEERRRRSFQDYTGQKITLEAVLNTTCKKCGCKGHFAKDCFMQPGGTKYSLIPDEEEE  
 KEEAKSAEFKPDPTRNPSRKRKKEKKKKKHRDRKSSDSDSSDSESDTGKRARHTSKDSCAAKAKKKKKK  
 HKKKHKE

TRTRPLEQKLISEEDLAANDILDYKDDDDKV

**Restriction Sites:** Sgfl-MluI

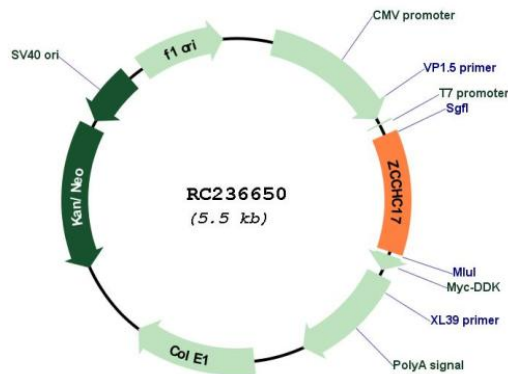
**Cloning Scheme:**

Cloning sites used for ORF Shuttling:



\* The last codon before the Stop codon of the ORF

**Plasmid Map:**



**ACCN:** NM\_001282570

**ORF Size:** 651 bp

<b>OTI Disclaimer:</b>	The molecular sequence of this clone aligns with the gene accession number as a point of reference only. However, individual transcript sequences of the same gene can differ through naturally occurring variations (e.g. polymorphisms), each with its own valid existence. This clone is substantially in agreement with the reference, but a complete review of all prevailing variants is recommended prior to use. <a href="#">More info</a>
<b>OTI Annotation:</b>	This clone was engineered to express the complete ORF with an expression tag. Expression varies depending on the nature of the gene.
<b>Components:</b>	The ORF clone is ion-exchange column purified and shipped in a 2D barcoded Matrix tube containing 10ug of transfection-ready, dried plasmid DNA (reconstitute with 100 ul of water).
<b>Reconstitution Method:</b>	<ol style="list-style-type: none"><li>1. Centrifuge at 5,000xg for 5min.</li><li>2. Carefully open the tube and add 100ul of sterile water to dissolve the DNA.</li><li>3. Close the tube and incubate for 10 minutes at room temperature.</li><li>4. Briefly vortex the tube and then do a quick spin (less than 5000xg) to concentrate the liquid at the bottom.</li><li>5. Store the suspended plasmid at -20°C. The DNA is stable for at least one year from date of shipping when stored at -20°C.</li></ol>
<b>RefSeq:</b>	<a href="#">NM_001282570.1</a> , <a href="#">NP_001269499.1</a>
<b>RefSeq Size:</b>	1514 bp
<b>RefSeq ORF:</b>	654 bp
<b>Locus ID:</b>	51538
<b>UniProt ID:</b>	<a href="#">Q9NP64</a>
<b>Cytogenetics:</b>	1p35.2
<b>MW:</b>	25.4 kDa