

Product datasheet for RC236627

AMD1 (NM_001287216) Human Tagged ORF Clone

Product data:

Product Type: Expression Plasmids
Product Name: AMD1 (NM_001287216) Human Tagged ORF Clone
Tag: Myc-DDK
Symbol: AMD1
Synonyms: ADOMETDC; AMD; SAMDC
Vector: pCMV6-Entry (PS100001)
E. coli Selection: Kanamycin (25 ug/mL)
Cell Selection: Neomycin
ORF Nucleotide Sequence: >RC236627 representing NM_001287216
Red=Cloning site Blue=ORF Green=Tags(s)

TTTTGTAATACGACTCACTATAGGGCGGCCGGAATTCGTCGACTGGATCCGGTACCGAGGAGATCTGCC
GCC**CGATCGCC**

ATGGAAGCTGCACATTTTTTCGAAGGGACCGAGAAGCTGCTGGAGGTTTGGTTCTCCGGCAGCAGCCCG
ACGCAAACCAAGGATCTGGGGATCTTCGCACTATCCCAAGGACTTATATACTCTGGATTTCCAGAGAG
TCGGGTAATCAGTCAGCCAGATCAAACCTTGAAATTCTGATGAGTGAGCTTGACCCAGCAGTTATGGAC
CAGTTCTACATGAAAGATGGTGTACTGCAAGGATGTCCTCGTGAGAGTGGAATTCGTGACCTGATAC
CAGGTTCTGTCATTGATGCCACAATGTTCAATCCTTGTTGGGATTCGATGAATGGAATGAAATCGGATGG
AACTTATTGGACTATTCACATCACTCCAGAACCAGAATTTCTTATGTTAGCTTTGAAACAACTTAAGT
CAGACCTCCTATGATGACCTGATCAGGAAAGTTGTAGAAGTCTTCAAGCCAGGAAAATTTGTGACCACCT
TGTTTGTAAATCAGAGTTCTAAATGTCGCACAGTGCTTGCTTCGCCCCAGAAGATTGAAGTTTTAAGCG
TCTTGATTGCCAGAGTGCTATGTTCAATGATTACAATTTGTTTTTACCAGTTTTGCTAAGAAGCAGCAA
CAACAGCAGAGT

ACGCGTACGCGGCCGCTCGAGCAGAACTCATCTCAGAAGAGGATCTGGCAGCAAATGATATCCTGGATT
ACAAGGATGACGACGATAAGGTTTAA



[View online »](#)

Protein Sequence: >RC236627 representing NM_001287216
 Red=Cloning site Green=Tags(s)

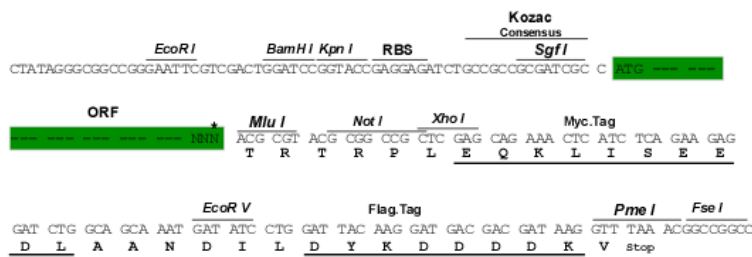
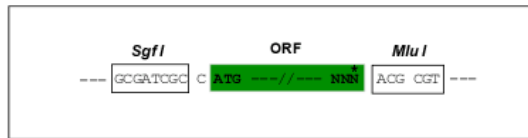
MEAAHFFEGTEKLLLEVWFSRQQPDANQGSGLRTIPRYLYTLDFPESRVISQPDQTLIELMSELDPAVMMD
 QFYMKDGVTAKDVTRESGIRDLIPGSVIDATMFNPCGYSMNGMKSDGTYWTHITPEPEFSYVSFETNLS
 QTSYDDLIRKVVVEVFKPGKFVTTLFVNQSSKCRTVLASPQKIEGFKRLDCQSAMFNDFYVFTSFVAKKQQ
 QQQS

TRTRPLEQKLISEEDLAANDILDYKDDDDKV

Restriction Sites: SgfI-MluI

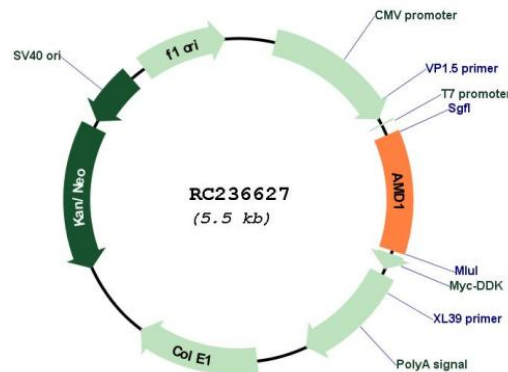
Cloning Scheme:

Cloning sites used for ORF Shuttling:



* The last codon before the Stop codon of the ORF

Plasmid Map:



ACCN: NM_001287216

ORF Size: 642 bp

OTI Disclaimer:	The molecular sequence of this clone aligns with the gene accession number as a point of reference only. However, individual transcript sequences of the same gene can differ through naturally occurring variations (e.g. polymorphisms), each with its own valid existence. This clone is substantially in agreement with the reference, but a complete review of all prevailing variants is recommended prior to use. More info
OTI Annotation:	This clone was engineered to express the complete ORF with an expression tag. Expression varies depending on the nature of the gene.
Components:	The ORF clone is ion-exchange column purified and shipped in a 2D barcoded Matrix tube containing 10ug of transfection-ready, dried plasmid DNA (reconstitute with 100 ul of water).
Reconstitution Method:	<ol style="list-style-type: none">1. Centrifuge at 5,000xg for 5min.2. Carefully open the tube and add 100ul of sterile water to dissolve the DNA.3. Close the tube and incubate for 10 minutes at room temperature.4. Briefly vortex the tube and then do a quick spin (less than 5000xg) to concentrate the liquid at the bottom.5. Store the suspended plasmid at -20°C. The DNA is stable for at least one year from date of shipping when stored at -20°C.
RefSeq:	NM_001287216.1 , NP_001274145.1
RefSeq Size:	3077 bp
RefSeq ORF:	645 bp
Locus ID:	262
Cytogenetics:	6q21
Protein Families:	Druggable Genome
Protein Pathways:	Arginine and proline metabolism, Cysteine and methionine metabolism, Metabolic pathways
MW:	24.9 kDa
Gene Summary:	This gene encodes an important intermediate enzyme in polyamine biosynthesis. The polyamines spermine, spermidine, and putrescine are low-molecular-weight aliphatic amines essential for cellular proliferation and tumor promotion. Multiple alternatively spliced transcript variants have been identified. Pseudogenes of this gene are found on chromosomes 5, 6, 10, X and Y. [provided by RefSeq, Dec 2013]