

Product datasheet for **RC236603**

WDR61 (NM_001303248) Human Tagged ORF Clone

Product data:

Product Type:	Expression Plasmids
Product Name:	WDR61 (NM_001303248) Human Tagged ORF Clone
Tag:	Myc-DDK
Symbol:	WDR61
Synonyms:	REC14; SKI8
Vector:	pCMV6-Entry (PS100001)
E. coli Selection:	Kanamycin (25 ug/mL)
Cell Selection:	Neomycin
ORF Nucleotide Sequence:	>RC236603 representing NM_001303248 Red=Cloning site Blue=ORF Green=Tags(s)

TTTTGTAATACGACTCACTATAGGGCGCCGGAATTCGTCGACTGGATCCGGTACCGAGGAGATCTGCC
GCC**CGGATCGCC**

ATGACCAACCAAGTACGGTATTCTCTTCAAACAAGAGCAAGTGGATGCCTGGACTTTGGCCTTTTCTCCTG
ATCCCAGTATCTGGCCACAGGAAGTCAATGTCGGGAAAGTGAACATTTTTGGTGTGGAAAGTGGGAAAA
GGAATATTCTTTGGACACGAGAGGAAAAATTCATTCTTAGTATTGCATATAGTCCTGATGGGAAATACCTA
GCCAGTGGAGCCATAGATGGAATCATCAATATTTTTGATATTGCAACTGGAAAAGTCTGCATACCCCTGG
AAGGCCATGCCATGCCCATTCGCTCCTTGACCTTTTCCCGGACTCCCAGCTCCTTGCACTGCTTCAGA
TGATGGCTACATCAAGATCTATGATGTACAACATGCCAATTTGGCTGGCAGCTGAGCGGCCATGCCTCC
TGGGTGCTGAACGTTGCATTCTGTCTGATGACTCACTTTGTTCCAGTTCGTCTGACAAAAGTGTA
AAGTTGGGATGTTGGAACGAGGACTTGTGTTACACCTCTTTGATCACCAGGATCAGGTCTGGGGAGT
AAAATACAATGGAATGGTTCAAAATTGTGTCTGTTGGAGATGACCAGGAAATTCACATCTATGATTGT
CCAATT

ACGCGTACGCGGCCGCTCGAGCAGAAACTCATCTCAGAAGAGGATCTGGCAGCAAATGATATCCTGGATT
ACAAGGATGACGACGATAAGGTTTAA



[View online »](#)

Protein Sequence: >RC236603 representing NM_001303248
 Red=Cloning site Green=Tags(s)

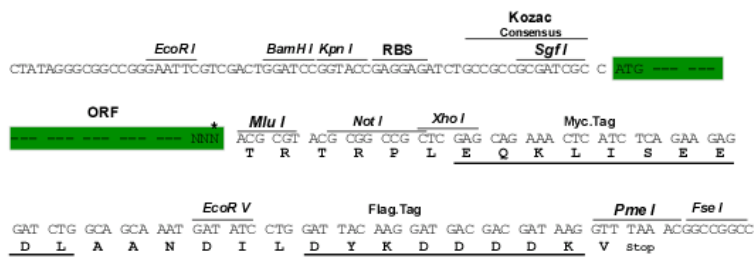
MTNQYGILFKQEVDAWTLAFSPDSQYLATGTHVGKVNIFGVESGKKEYSLDTRGKFI LSIAYSPDGKYL
 ASGAIDGIINIFDIATGKLLHTLEGHAMPIRSLTFSPDSQLLVTASDDGYIKIYDVQHANLAGT LSGHAS
 WVLNVAFCPDDTHFVSSSSDKSVKVDVGTTRTCVHTFFDHQDQVWGKYNNGSKIVSVGDDQEIHIYDC
 PI

TRTRPLEQKLISEEDLAANDILDYKDDDDKV

Restriction Sites: Sgfl-MluI

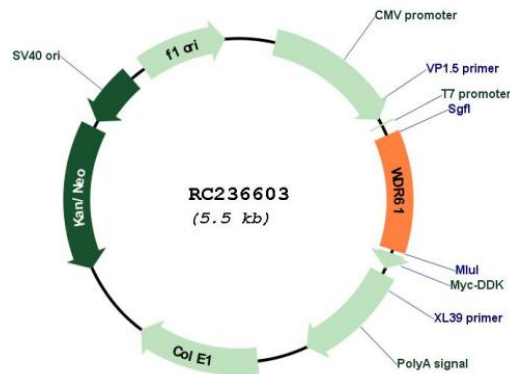
Cloning Scheme:

Cloning sites used for ORF Shuttling:



* The last codon before the Stop codon of the ORF

Plasmid Map:



ACCN: NM_001303248

ORF Size: 636 bp

OTI Disclaimer:	The molecular sequence of this clone aligns with the gene accession number as a point of reference only. However, individual transcript sequences of the same gene can differ through naturally occurring variations (e.g. polymorphisms), each with its own valid existence. This clone is substantially in agreement with the reference, but a complete review of all prevailing variants is recommended prior to use. More info
OTI Annotation:	This clone was engineered to express the complete ORF with an expression tag. Expression varies depending on the nature of the gene.
Components:	The ORF clone is ion-exchange column purified and shipped in a 2D barcoded Matrix tube containing 10ug of transfection-ready, dried plasmid DNA (reconstitute with 100 ul of water).
Reconstitution Method:	<ol style="list-style-type: none">1. Centrifuge at 5,000xg for 5min.2. Carefully open the tube and add 100ul of sterile water to dissolve the DNA.3. Close the tube and incubate for 10 minutes at room temperature.4. Briefly vortex the tube and then do a quick spin (less than 5000xg) to concentrate the liquid at the bottom.5. Store the suspended plasmid at -20°C. The DNA is stable for at least one year from date of shipping when stored at -20°C.
RefSeq:	NM_001303248.2
RefSeq Size:	1054 bp
RefSeq ORF:	639 bp
Locus ID:	80349
UniProt ID:	Q9GZS3
Cytogenetics:	15q25.1
Protein Pathways:	RNA degradation
MW:	23.7 kDa
Gene Summary:	WDR61 is a subunit of the human PAF and SKI complexes, which function in transcriptional regulation and are involved in events downstream of RNA synthesis, such as RNA surveillance (Zhu et al., 2005 [PubMed 16024656]).[supplied by OMIM, Mar 2008]