

Product datasheet for **RC236595**

ST2 (IL1RL1) (NM_001282408) Human Tagged ORF Clone

Product data:

Product Type:	Expression Plasmids
Product Name:	ST2 (IL1RL1) (NM_001282408) Human Tagged ORF Clone
Tag:	Myc-DDK
Symbol:	IL1RL1
Synonyms:	DER4; FIT-1; IL33R; ST2; ST2L; ST2V; T1
Vector:	pCMV6-Entry (PS100001)
E. coli Selection:	Kanamycin (25 ug/mL)
Cell Selection:	Neomycin
ORF Nucleotide Sequence:	>RC236595 representing NM_001282408 Red=Cloning site Blue=ORF Green=Tags(s)

TTTTGTAATACGACTCACTATAGGGCGGCCGGAATTCGTCGACTGGATCCGGTACCGAGGAGATCTGCC
GCC**CGATCGCC**

ATGTATCAACAGTATCTGGATCAGAAAAAATCCAAAATTTATTGTCCTACCATTGACCTCTACAAC
GGACAGCACCTCTTGAGTGGTTAAGAATTGTCAGGCTCTCAAGGATCAAGGTACAGGGCGCACAAAGT
ATTTTTGGTCATTGATAATGTGATGACTGAGGACGAGGTGATTACACCTGTAAATTTATACACAATGAA
AATGGAGCCAATTATAGTGTGACGGCGACCAGGTCCTTCACGGTCAAGGATGAGCAAGGCTTTCTCTGT
TTCCAGTAATCGAGCCCTGCACAAAATGAAATAAAGGAAGTGAAATTTGGAAAAACGAAACCTAAC
TTGCTCTGCTTGTGGAAAAGGCACTCAGTCTTGGCTGCCGTCTGTGGCAGCTTAATGGAACAAAA
ATTACAGACTTTGGTGAACCAAGAATCAACAAGAGGAAGGGCAAAATCAAAGTTTCAGCAATGGGCTGG
CTTGTCTAGACATGGTTTTAAGAATAGCTGACGTGAAGGAAGAGGATTTATTGCTGCAGTACGACTGTCT
GGCCCTGAATTTGCATGGCTTGAGAAGGCACACCGTAAGACTAAGTAGGAAAAATCCAAGTAAGGAGTGT
TTC

ACGCGTACGCGGCCGCTCGAGCAGAACTCATCTCAGAAGAGGATCTGGCAGCAAATGATATCCTGGATT
ACAAGGATGACGACGATAAGGTTTAA



[View online »](#)

Protein Sequence: >RC236595 representing NM_001282408
 Red=Cloning site Green=Tags(s)

MYSTVSGSEKNSKIYCPIDLYNWTAPLEWFKNCQALQGSRYRAHKSFLVIDNVMTEADGDYTCFKFIHNE
 NGANYSVTATRSFTVKDEQGFSLFPVIGAPAQNEIKEVEIGKNANLTCSACFGKGTQFLAAVLWQLNGTK
 ITDFGEPRIQQEEGQNSFSNGLACLDMVLRIDVYKEEDLLLQYDCLALNLHGLRRHTVRLSRKNPSKEC
 F

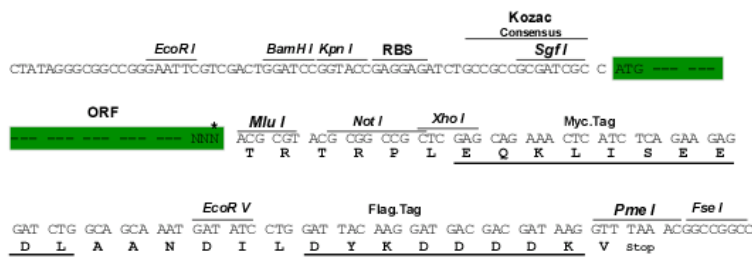
TRTRPLEQKLISEEDLAANDILDYKDDDDKV

Restriction Sites:

Sgfl-MluI

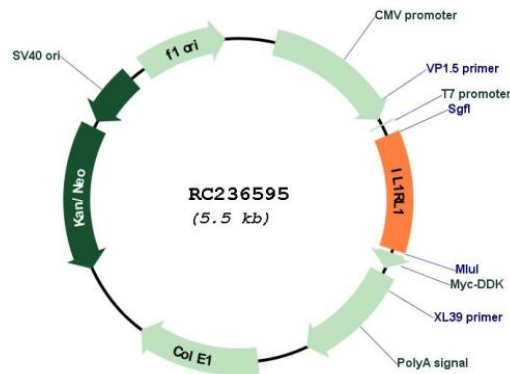
Cloning Scheme:

Cloning sites used for ORF Shuttling:



* The last codon before the Stop codon of the ORF

Plasmid Map:



ACCN: NM_001282408

ORF Size: 633 bp

OTI Disclaimer:	The molecular sequence of this clone aligns with the gene accession number as a point of reference only. However, individual transcript sequences of the same gene can differ through naturally occurring variations (e.g. polymorphisms), each with its own valid existence. This clone is substantially in agreement with the reference, but a complete review of all prevailing variants is recommended prior to use. More info
OTI Annotation:	This clone was engineered to express the complete ORF with an expression tag. Expression varies depending on the nature of the gene.
Components:	The ORF clone is ion-exchange column purified and shipped in a 2D barcoded Matrix tube containing 10ug of transfection-ready, dried plasmid DNA (reconstitute with 100 ul of water).
Reconstitution Method:	<ol style="list-style-type: none">1. Centrifuge at 5,000xg for 5min.2. Carefully open the tube and add 100ul of sterile water to dissolve the DNA.3. Close the tube and incubate for 10 minutes at room temperature.4. Briefly vortex the tube and then do a quick spin (less than 5000xg) to concentrate the liquid at the bottom.5. Store the suspended plasmid at -20°C. The DNA is stable for at least one year from date of shipping when stored at -20°C.
RefSeq:	NM_001282408.1 , NP_001269337.1
RefSeq Size:	3589 bp
RefSeq ORF:	636 bp
Locus ID:	9173
UniProt ID:	Q01638
Cytogenetics:	2q12.1
Protein Families:	Druggable Genome, Secreted Protein, Transmembrane
MW:	24.2 kDa
Gene Summary:	The protein encoded by this gene is a member of the interleukin 1 receptor family. Studies of the similar gene in mouse suggested that this receptor can be induced by proinflammatory stimuli, and may be involved in the function of helper T cells. This gene, interleukin 1 receptor, type I (IL1R1), interleukin 1 receptor, type II (IL1R2) and interleukin 1 receptor-like 2 (IL1RL2) form a cytokine receptor gene cluster in a region mapped to chromosome 2q12. Alternative splicing of this gene results in multiple transcript variants. [provided by RefSeq, Jul 2008]