

Product datasheet for **RC235958**

TCTP (TPT1) (NM_001286273) Human Tagged ORF Clone

Product data:

Product Type: Expression Plasmids
Product Name: TCTP (TPT1) (NM_001286273) Human Tagged ORF Clone
Tag: Myc-DDK
Symbol: TPT1
Synonyms: HRF; p02; p23; TCTP
Vector: pCMV6-Entry (PS100001)
E. coli Selection: Kanamycin (25 ug/mL)
Cell Selection: Neomycin
ORF Nucleotide Sequence: >RC235958 representing NM_001286273
Red=Cloning site **Blue**=ORF **Green**=Tags(s)

TTTTGTAATACGACTCACTATAGGGCGCCGGAATTCGTCGACTGGATCCGGTACCGAGGAGATCTGCC
GCC**GCGATCGCC**

ATGGTCAGTAGGACAGAAGGTAACATTGATGACTCGCTCATTGGTGAAATGCCTCCGCTGAAGGCCCG
AGGGCGAAGGTACCGAAAGCACAGTAATCACTGGTGTGATATTGTCATGAACCATCACCTGCAGGAAAC
AAGTTTCACAAAAGAAGCCTACAAGAAGTACATCAAAGATTACATGAAATCAATCAAAGGAAACTTGAA
GAACAGAGACCAGAAAGAGTAAACCTTTTATGACAGGGGCTGCAGAACAATCAAGCACATCCTTGCTA
ATTTCAAAAACCTACCAGTTCTTTATTGGTGAAAACATGAATCCAGATGGCATGGTTGCTCTATTGGACTA
CCGTGAGGATGGTGTGACCCCATATATGATTTTCTTTAAGGATGGTTAGAAATGGAAAAATGT

ACGCGTACGCGGCCGCTCGAGCAGAACTCATCTCAGAAGAGGATCTGGCAGCAAATGATATCCTGGATT
ACAAGGATGACGACGATAAGGTTTAA

Protein Sequence: >RC235958 representing NM_001286273
Red=Cloning site **Green**=Tags(s)

MVSRTEGNIDDSLIGGNASAEGPEGEGTESTVITGVDIVMNHHLQETSFTKEAYKKYIKDYMKSIKGLKLE
EQRPERVKPFMTGAAEQIKHILANFKNYQFFIGENMNPDMVALLDYREDGVTPYMIFFKDGLEMEKC

TRTRPLEQKLISEEDLAANDILDYKDDDDKV

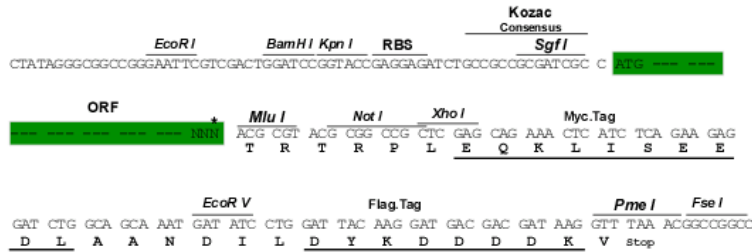
Restriction Sites: Sgfl-MluI



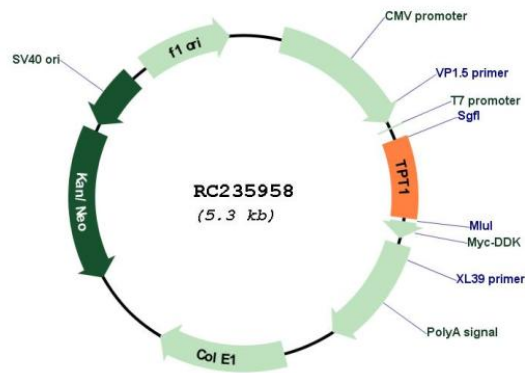
[View online »](#)

Cloning Scheme:

Cloning sites used for ORF Shuttling:



* The last codon before the Stop codon of the ORF

Plasmid Map:

ACCN:

NM_001286273

ORF Size:

414 bp

OTI Disclaimer:

The molecular sequence of this clone aligns with the gene accession number as a point of reference only. However, individual transcript sequences of the same gene can differ through naturally occurring variations (e.g. polymorphisms), each with its own valid existence. This clone is substantially in agreement with the reference, but a complete review of all prevailing variants is recommended prior to use. [More info](#)

OTI Annotation:	This clone was engineered to express the complete ORF with an expression tag. Expression varies depending on the nature of the gene.
Components:	The ORF clone is ion-exchange column purified and shipped in a 2D barcoded Matrix tube containing 10ug of transfection-ready, dried plasmid DNA (reconstitute with 100 ul of water).
Reconstitution Method:	<ol style="list-style-type: none">1. Centrifuge at 5,000xg for 5min.2. Carefully open the tube and add 100ul of sterile water to dissolve the DNA.3. Close the tube and incubate for 10 minutes at room temperature.4. Briefly vortex the tube and then do a quick spin (less than 5000xg) to concentrate the liquid at the bottom.5. Store the suspended plasmid at -20°C. The DNA is stable for at least one year from date of shipping when stored at -20°C.
RefSeq:	NM_001286273.2
RefSeq Size:	4575 bp
RefSeq ORF:	417 bp
Locus ID:	7178
UniProt ID:	P13693
Cytogenetics:	13q14.13
MW:	16 kDa
Gene Summary:	<p>This gene encodes a protein that is a regulator of cellular growth and proliferation. Its mRNA is highly structured and contains an oligopyrimidine tract (5'-TOP) in its 5' untranslated region that functions to repress its translation under quiescent conditions. The encoded protein is involved in a variety of cellular pathways, including apoptosis, protein synthesis and cell division. It binds to and stabilizes microtubules, and removal of this protein through phosphorylation is required for progression through mitotic and meiotic cell divisions. This gene is known to play a role in carcinogenesis, and is upregulated in some cancer cells. Alternative splicing results in multiple transcript variants encoding different isoforms. [provided by RefSeq, Aug 2017]</p>