

Product datasheet for **RC235889**

OPALIN (NM_001284320) Human Tagged ORF Clone

Product data:

Product Type: Expression Plasmids
Product Name: OPALIN (NM_001284320) Human Tagged ORF Clone
Tag: Myc-DDK
Symbol: OPALIN
Synonyms: HTMP10; TMEM10; TMP10
Vector: pCMV6-Entry (PS100001)
E. coli Selection: Kanamycin (25 ug/mL)
Cell Selection: Neomycin
ORF Nucleotide Sequence: >RC235889 representing NM_001284320
Red=Cloning site Blue=ORF Green=Tags(s)

TTTTGTAATACGACTCACTATAGGGCGGCCGGAATTCGTCGACTGGATCCGGTACCGAGGAGATCTGCC
GCC**GCGATCGCC**

ATGAGTTTTCTACTGAACCTCACCTGCCGGCGAACACAGACTGTGGCCCTCTCTTGGATTAGCGGCGG
GCATACCATTGCTGGTGGCCACAGCCCTGCTGGTGGCTTTACTATTTACTTTGATTCACCGAAGAAGAAG
CAGCATTGAGGCCATGGAGGAAAGTGACAGACCATGTGAAATTCAGAAATTGATGACAATCCCAAGATA
TCTGAGAATCCTAGGAGATCACCCACACATGAGAAGAATACGATGGGAGCACAAGAGGCCACATATATG
TGAAGACTGTAGCAGGAAGCGAGGAACCTGTGCATGACCGTTACCGTCTACTATAGAAATGAAAGAAG
GAGGGATTGTGGTGGCTTGTGCCAGACTGAGCCTGGAA

ACGCGTACGCGGCCGCTCGAGCAGAACTCATCTCAGAAGAGGATCTGGCAGCAATGATATCCTGGATT
ACAAGGATGACGACGATAAGGTTTAA

Protein Sequence: >RC235889 representing NM_001284320
Red=Cloning site Green=Tags(s)

MSFSLNFTLPANTDCGPSLGLAAGIPLL VATALLVALLFTLIHRRRSSIEAMEESDRPCEISEIDDPKI
SENPRRSPTHEKNTMGAQEAHIIYVKTVAGSEEPVHRYRPTIEMERRRGLWWLVPRLSLE

TRTRPLEQKLI SEEDLAANDILDYKDDDDKV

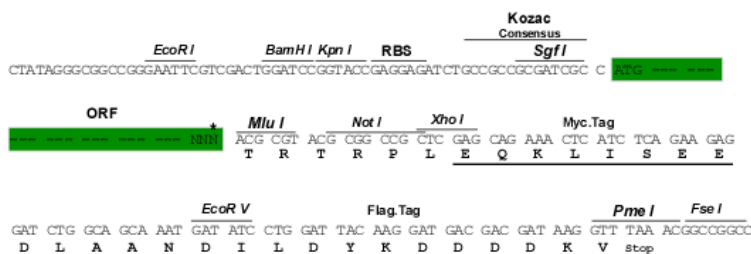
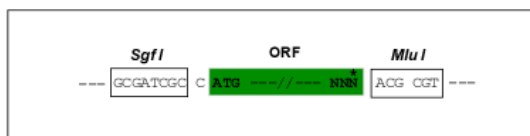
Restriction Sites: Sgfl-MluI



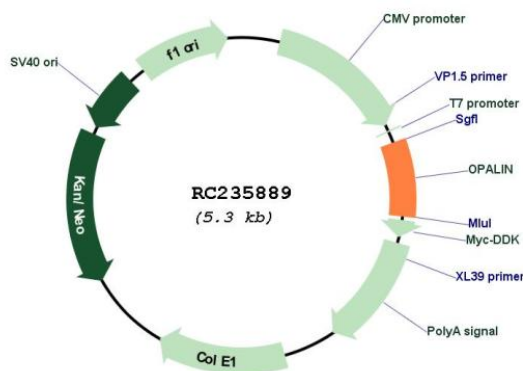
[View online »](#)

Cloning Scheme:

Cloning sites used for ORF Shuttling:



* The last codon before the Stop codon of the ORF

Plasmid Map:

ACCN:

NM_001284320

ORF Size:

390 bp

OTI Disclaimer:

The molecular sequence of this clone aligns with the gene accession number as a point of reference only. However, individual transcript sequences of the same gene can differ through naturally occurring variations (e.g. polymorphisms), each with its own valid existence. This clone is substantially in agreement with the reference, but a complete review of all prevailing variants is recommended prior to use. [More info](#)

OTI Annotation:	This clone was engineered to express the complete ORF with an expression tag. Expression varies depending on the nature of the gene.
Components:	The ORF clone is ion-exchange column purified and shipped in a 2D barcoded Matrix tube containing 10ug of transfection-ready, dried plasmid DNA (reconstitute with 100 ul of water).
Reconstitution Method:	<ol style="list-style-type: none">1. Centrifuge at 5,000xg for 5min.2. Carefully open the tube and add 100ul of sterile water to dissolve the DNA.3. Close the tube and incubate for 10 minutes at room temperature.4. Briefly vortex the tube and then do a quick spin (less than 5000xg) to concentrate the liquid at the bottom.5. Store the suspended plasmid at -20°C. The DNA is stable for at least one year from date of shipping when stored at -20°C.
RefSeq:	NM_001284320.1 , NP_001271249.1
RefSeq Size:	3602 bp
RefSeq ORF:	393 bp
Locus ID:	93377
UniProt ID:	Q96PE5
Cytogenetics:	10q24.1
Protein Families:	Transmembrane
MW:	15.1 kDa
Gene Summary:	Central nervous system-specific myelin protein that increase myelin genes expression during oligodendrocyte differentiation. Promotes oligodendrocyte terminal differentiation. [UniProtKB/Swiss-Prot Function]