

Product datasheet for **RC235866**

SURF4 (NM_001280792) Human Tagged ORF Clone

Product data:

Product Type: Expression Plasmids
Product Name: SURF4 (NM_001280792) Human Tagged ORF Clone
Tag: Myc-DDK
Symbol: SURF4
Synonyms: ERV29
Vector: pCMV6-Entry (PS100001)
E. coli Selection: Kanamycin (25 ug/mL)
Cell Selection: Neomycin
ORF Nucleotide Sequence: >RC235866 representing NM_001280792
Red=Cloning site Blue=ORF Green=Tags(s)

TTTTGTAATACGACTCACTATAGGGCGCCGGAATTCGTCGACTGGATCCGGTACCGAGGAGATCTGCC
GCC**GCGATCGCC**

ATGGGCCAGAACGACCTGATGGGCACGGCCGAGGACTTCGCCGACCAGTTCCTCCGTGTCAAAAGCAGT
ACCTGCCCCACGTGGCGGCCTCTGTCTGATCAGCACCTTCCTGGAGGACGGCATCCGTATGTGGTTCCA
GTGGAGCGAGCAGCGCGACTACATCGACACCACCTGGAAGTGGCGTACCTGCTGGCCTCGTCTTCGTC
TTCTCAACTTGCTGGGACAGCTGACTGGCTGCGTCCTGGTGTGAGCAGGAACTTCGTGCAGTACGCCT
GCTTCGGGCTCTTTGGAATCATAGCTCTGCAGACGATTGCCTACAGCATTTTATGGGACTTGAAGTTTTT
GATGAGATTGTCCAGAACATCGTGGGCACAGCTC

ACGCGTACGCGGCCGCTCGAGCAGAACTCATCTCAGAAGAGGATCTGGCAGCAAATGATATCCTGGATT
ACAAGGATGACGACGATAAGGTTTAA

Protein Sequence: >RC235866 representing NM_001280792
Red=Cloning site Green=Tags(s)

MGQNDLMGTAEDFADQFLRVTKQYLPHVARLCLISTFLEDGIRMWFQWSEQRDYIDTTWNCGYLLASSFV
FLNLLGQLTGCVLVLSRNFVQYACFLFGIIALQTIAYSILWDLKFLMRLSRTSWAQL

TRTRPLEQKLISEEDLAANDILDYKDDDDKV

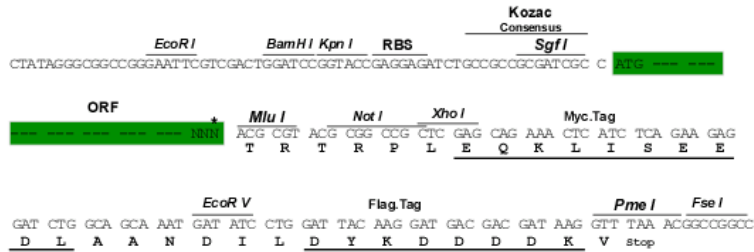
Restriction Sites: Sgfl-MluI



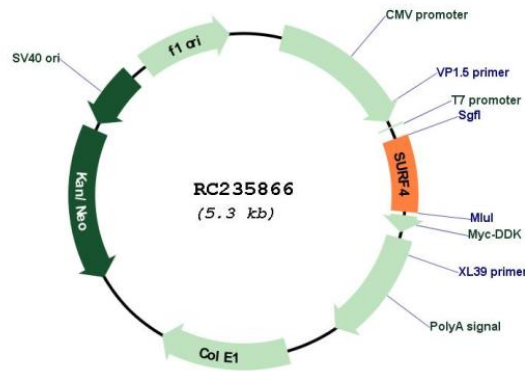
[View online »](#)

Cloning Scheme:

Cloning sites used for ORF Shutting:



* The last codon before the Stop codon of the ORF

Plasmid Map:

ACCN:

NM_001280792

ORF Size:

384 bp

OTI Disclaimer:

The molecular sequence of this clone aligns with the gene accession number as a point of reference only. However, individual transcript sequences of the same gene can differ through naturally occurring variations (e.g. polymorphisms), each with its own valid existence. This clone is substantially in agreement with the reference, but a complete review of all prevailing variants is recommended prior to use. [More info](#)

OTI Annotation:	This clone was engineered to express the complete ORF with an expression tag. Expression varies depending on the nature of the gene.
Components:	The ORF clone is ion-exchange column purified and shipped in a 2D barcoded Matrix tube containing 10ug of transfection-ready, dried plasmid DNA (reconstitute with 100 ul of water).
Reconstitution Method:	<ol style="list-style-type: none">1. Centrifuge at 5,000xg for 5min.2. Carefully open the tube and add 100ul of sterile water to dissolve the DNA.3. Close the tube and incubate for 10 minutes at room temperature.4. Briefly vortex the tube and then do a quick spin (less than 5000xg) to concentrate the liquid at the bottom.5. Store the suspended plasmid at -20°C. The DNA is stable for at least one year from date of shipping when stored at -20°C.
RefSeq:	NM_001280792.1 , NP_001267721.1
RefSeq Size:	2881 bp
RefSeq ORF:	387 bp
Locus ID:	6836
UniProt ID:	O15260
Cytogenetics:	9q34.2
Protein Families:	Transmembrane
MW:	15.3 kDa
Gene Summary:	This gene is located in the surfeit gene cluster, which is comprised of very tightly linked housekeeping genes that do not share sequence similarity. The encoded protein is a conserved integral membrane protein that interacts with endoplasmic reticulum-Golgi intermediate compartment proteins. Disruption of this gene results in reduced numbers of endoplasmic reticulum-Golgi intermediate compartment clusters and redistribution of coat protein I to the cytosol. Alternate splicing results in multiple transcript variants. [provided by RefSeq, Jul 2013]