

## Product datasheet for **RC235614**

### **C1orf150 (GCSAML) (NM\_001281838) Human Tagged ORF Clone**

#### Product data:

**Product Type:** Expression Plasmids  
**Product Name:** C1orf150 (GCSAML) (NM\_001281838) Human Tagged ORF Clone  
**Tag:** Myc-DDK  
**Symbol:** GCSAML  
**Synonyms:** C1orf150  
**Vector:** pCMV6-Entry (PS100001)  
**E. coli Selection:** Kanamycin (25 ug/mL)  
**Cell Selection:** Neomycin  
**ORF Nucleotide Sequence:** >RC235614 representing NM\_001281838  
 Red=Cloning site Blue=ORF Green=Tags(s)

TTTTGTAATACGACTCACTATAGGGCGCCGGAATTCGTCGACTGGATCCGGTACCGAGGAGATCTGCC  
GCC**GCGATCGCC**

ATGACTACATTTGAAAGAAAACCTCAAGATCAAGATAAGAAAAGCCAAGAAGTTTCATCCACTTCTAATC  
AGGAAAACGAGAATGGCAGTGGTTCTGAAGAAGTGTGCTACACTGTCATTAATCACATCCCCATCAGAG  
ATCCTCCCTGAGCTCCAATGATGATGGCTATGAGAACATTGACTCCCTCACAAGGAAAGTGAGACAGTTT  
AGAGAAAGGTGAGAGACAGAATATGCCCTTCTTAGGACTTCTGTTAGTAGCCTTGTTCCTGCACCCATG  
AGCATGATTATGAAGTTGTGTTCCACAC

**ACGCGT**ACGCGGCCGCTCGAGCAGAAACTCATCTCAGAAGAGGATCTGGCAGCAAATGATATCCTGGATT  
ACAAGGATGACGACGATAAGGTTTAA

**Protein Sequence:** >RC235614 representing NM\_001281838  
 Red=Cloning site Green=Tags(s)

MTTFERKLQDQDKKSQEVSSSTSNQENENSGSSEEVCYTVINHIPHQRSSLSSNDDGYENIDSLTRKVRQF  
RERSETEYALLRTSVSRPCSCTHEHDYEVVFPH

**TR**TRPLEQKLISEEDLAANDILDYKDDDDKV

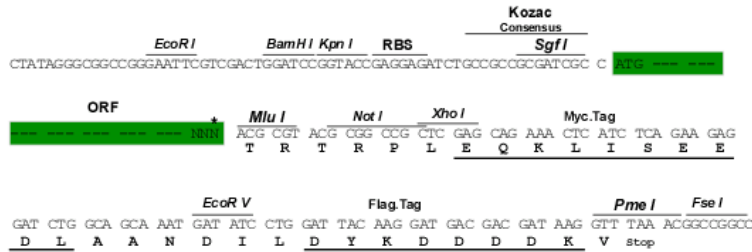
**Restriction Sites:** Sgfl-MluI



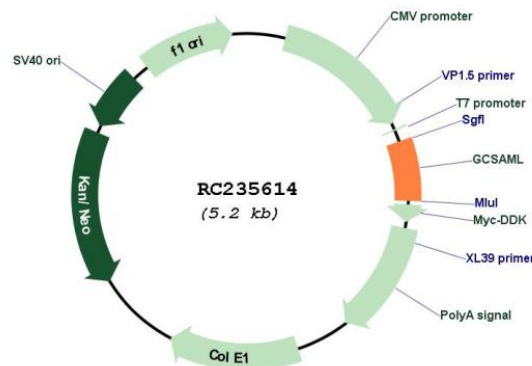
[View online »](#)

**Cloning Scheme:**

Cloning sites used for ORF Shuttling:



\* The last codon before the Stop codon of the ORF

**Plasmid Map:**

**ACCN:** NM\_001281838

**ORF Size:** 309 bp

**OTI Disclaimer:** The molecular sequence of this clone aligns with the gene accession number as a point of reference only. However, individual transcript sequences of the same gene can differ through naturally occurring variations (e.g. polymorphisms), each with its own valid existence. This clone is substantially in agreement with the reference, but a complete review of all prevailing variants is recommended prior to use. [More info](#)

<b>OTI Annotation:</b>	This clone was engineered to express the complete ORF with an expression tag. Expression varies depending on the nature of the gene.
<b>Components:</b>	The ORF clone is ion-exchange column purified and shipped in a 2D barcoded Matrix tube containing 10ug of transfection-ready, dried plasmid DNA (reconstitute with 100 ul of water).
<b>Reconstitution Method:</b>	<ol style="list-style-type: none"><li>1. Centrifuge at 5,000xg for 5min.</li><li>2. Carefully open the tube and add 100ul of sterile water to dissolve the DNA.</li><li>3. Close the tube and incubate for 10 minutes at room temperature.</li><li>4. Briefly vortex the tube and then do a quick spin (less than 5000xg) to concentrate the liquid at the bottom.</li><li>5. Store the suspended plasmid at -20°C. The DNA is stable for at least one year from date of shipping when stored at -20°C.</li></ol>
<b>RefSeq:</b>	<a href="#">NM_001281838.2</a>
<b>RefSeq Size:</b>	3918 bp
<b>RefSeq ORF:</b>	312 bp
<b>Locus ID:</b>	148823
<b>Cytogenetics:</b>	1q44
<b>MW:</b>	12.4 kDa
<b>Gene Summary:</b>	This gene encodes a protein thought to be a signaling molecule associated with germinal centers, the sites of proliferation and differentiation of mature B lymphocytes. Alternate splicing results in multiple transcript variants. [provided by RefSeq, Aug 2013]