

## Product datasheet for **RC235320**

### EIF4G1 (NM\_001194947) Human Tagged ORF Clone

#### Product data:

Product Type:	Expression Plasmids
Product Name:	EIF4G1 (NM_001194947) Human Tagged ORF Clone
Tag:	Myc-DDK
Symbol:	EIF4G1
Synonyms:	EIF-4G1; EIF4F; EIF4G; EIF4GI; P220; PARK18
Vector:	pCMV6-Entry (PS100001)
E. coli Selection:	Kanamycin (25 ug/mL)
Cell Selection:	Neomycin
ORF Nucleotide Sequence:	>RC235320 representing NM_001194947 Red=Cloning site Blue=ORF Green=Tags(s)

TTTTGTAATACGACTCACTATAGGGCGGCCGGAATTCGTCGACTGGATCCGGTACCGAGGAGATCTGCC  
GCC**CGGATCGCC**

ATGAACAAAGCTCCACAGTCCACAGGCCCCACCCGCCCATCCCCGGACTCCCACAGCCAGCGTTTC  
CCCCGGGGCAGACAGCGCCGGTGGTGTTCAGTACGCCACAAGCGACAAATGAACACGCCTTCTCAGCC  
CGCCAGGGAGGATTAGGTCTCTGCAGCACTTCTACCCTAGCCGGGCCAGCCCCGAGCAGTGCAGCC  
TCCCGAGTGCAGAGTGCAGCCCCGCCCCGCTGGCCAGCTGCCCATGTCTACCCTGCTGGATCCCAAG  
TAATGATGATCCCTTCCAGATCTCTACCCAGCCTCCCAGGGGGCTACTACATCCCTGGACAGGGGCG  
TTCCACATACGTTGTCCCGACACAGCAGTACCCTGTGCAGCCAGGAGCCCCAGGCTTCTATCCAGGTGCA  
AGCCCTACAGAATTTGGGACCTACGCTGGCGCCTACTATCCAGCCCAAGGGGTGCAGCAGTTTCCCACTG  
GCGTGGCCCCCGCCAGTTTTGATGAACCAGCCACCCAGATTGCTCCCAAGAGGGAGCGTAAGACGAT  
CCGAATTCGAGATCCAAACCAAGGAGGAAAGGATATCACAGAGGAGATCATGTCTGGGGCCCGCACTGCC  
TCCACACCCACCCCTCCCAGACGGGAGCGGTCTGGAGCCTCAAGCTAATGGGGAGACGCCCCAGGTTG  
CTGTATTGTCCGGCCAGATGACCGGTACAGGGAGCAATCATTGCTGACCGGCCAGGGCTGCCTGGCCC  
AGAGCATAGCCCTTCAGAATCCCAGCCTTCGTCGCCTTCTCCGACCCATCACCATCCCCAGTCTTGAA  
CCGGGGTCTGAGCCTAATCTCGCAGTCTCTCTATTCTGGGGACACTATGACAATAACAATGTCTG  
TAGAAGAATCAACCCCATCTCCCGTGAAGTGGGGAGCCATATCGCCTCTCTCCAGAACCCTCTCT  
CGCCGAACCCATACTGGAAGTAGAAGTGACACTTAGCAAACCGGTTCCAGAATCTGAGTTTTCTCCAGT  
CCTCTCCAGGCTCCCACCCCTTTGGCATCTCACACAGTGGAAATTCATGAGCCTAATGGCATGGTCCCAT  
CTGAAGATCTGGAACCAGAGGTGGAGTCAAGCCAGAGCTTGCTCCTCCCCAGCTTGCCCTCCGAATC  
CCCTGTGCCATTGCTCCAACCTGCCAACCTGAGGAAGTCTCAACGGAGCCCCCTGCCACCAGCTGTG  
GACTTAAGCCAGTCAGTGCAGCCAGAGGAGCAGGCCAAGGAGGTGACAGCATCAATGGCGCCCCCACC  
TCCCTCTGCTACTCCAGCTACGGCTCCTTCCAGTACTTCCCCAGCTCAGGAGGAGAAATGGAAGAAGA  
AGAAGAAGAGGAAGAAGGAGAAGCAGGAGAAGCAGGAGAAGTGAAGTGAAGGAGGAGGAGGAACTG  
CTCCCCCAGAGAGTACCCTATTCCAGCCAACCTGTCTCAGAATTTGGAGGCAGCAGCAGCCACTCAAG



[View online >](#)

TGGCAGTATCTGTGCCAAAGAGGAGACGGAAAATTAAGGAGCTAAATAAGAAGGAGGCTGTTGGAGACCT  
TCTGGATGCCTTCAAGGAGGCGAACCCGGCAGTACCAGAGGTGAAAAATCAGCCTCCTGCAGGCAGCAAT  
CCAGGCCCAGAGTCTGAGGGCAGTGGTGTGCCCCACGTCCTGAGGAAGCAGATGAGACCTGGGACTCAA  
AGGAAGACAAAATTCACAATGCTGAGAACATCCAGCCCGGGAACAGAAGTATGAATATAAGTCAGATCA  
GTGGAAGCCTCTAAACCTAGAGGAGAAAAACGTTACGACCGTGAGTTCCTGCTTGGTTTTAGTTCATC  
TTTGCCAGTATGCAGAAGCCAGAGGGATTGCCACATATCAGTGACGTGGTGTGGACAAGGCAATAAAAA  
CACCCTGCGGCCACTGGATCCCACTAGACTACAAGGCATAAATTTGGCCAGACTTCACTCCATCCTT  
TGCCAACCTTGGCCGGACAACCCCTTAGCACCCGTGGGCCCCCAAGGGGTGGGCCAGGTGGGAGCTGCC  
CGTGGGCCGGCTGGCCTGGGACCCCGGCCTCTCAGCAGGGACCCGAAAAGAACCACGCAAGATCATTG  
CCACAGTGTTAATGACCGAAGATATAAACTGAACAAAGCAGAGAAAGCCTGAAAACCCAGCAGCAAGCG  
GACGGCGCTGATAAGGATCGAGGGGAAGAAGTGTGATGGCAGCAAAACCCAGGACCTATTCGCGAGG  
GTGCGCTCCATCCTGAATAAACTGACACCCAGATGTTCCAGCAGCTGATGAAGCAAGTGACGCAGCTGG  
CCATCGACACCGAGGAACGCCTCAAAGGGGTATTGACCTCATTTTTGAGAAGGCCATTTAGAGCCCAA  
CTTCTCTGTGGCCTATGCCAACATGTGCCGCTGCCTCATGGCGTGAAAGTGCCCACTACGAAAAGCCA  
ACAGTGACTGTGAACTTCCGAAAGCTGTTGTTGAATCGATGTGAGAAGGAGTTTGAGAAAAGCAAGATG  
ATGATGAGGTTTTTGAGAAGAAGCAAAAAGAGATGGATGAAGCTGCTACGGCAGAGGAACAGGAGCGCT  
GAAGGAAGAGCTGGAAGAGGCTCGGGACATAGCCCGGCGCGCTCTTAGGGAATATCAAGTTTATTGGA  
GAGTTGTTCAAAGTGAAGATGTTAACAGAGGCAATAATGCATGACTGTGTGGTCAAAGTGCCTAAGAACC  
ATGATGAAGAGTCCCTTGAGTGCCTTTGTGCTGCTCACCACCATTTGGCAAAGACTGGACTTTGAAAA  
AGCCAAGCCCCGAATGGATCAGTATTTCAACCAGATGGAAAAATCATTAAAGAAAAGAAGACGTCATCC  
CGCATCCGCTTTATGCTGCAGGACGTGCTGGATCTCGAGGGAGCAATTTGGTGCCACGCCGAGGGGATC  
AGGGTCCCAAGACCATTGACCAGATCCATAAGGAGGCTGAGATGGAAGAACATCGAGAGCACATCAAAGT  
GCAGCAGCTCATGGCCAAGGGCAGTGACAAGCGTCGGGGCGGTCTCCAGGCCCTCCCACAGCCCTGGA  
CTTCCCCTTGTTGATGATGGTGGCTGGAACACAGTTCATCAGCAAAAGGTAGCCGCCCATTTGACACCT  
CACGACTACCAAGATACCAAGCCTGGCTCCATCGATTCTAACAAACAGCTCTTTGACCTGGAGGGCG  
ACTGAGCTGGGGCAAGGGCAGCAGCGGAGGCTCAGGAGCCAAGCCCTCAGACGCAGCATCAGAAGTGTCT  
CGCCAGCTACTAGTACTTTGAATCGTCTCAGCCCTTCAACAAGCGGTACCCACAGAAAAGCACAGATA  
ATAGACGTGTGGTGCAGAGGAGTGTGAGCCGAGAACGAGGCGAGAAAGCTGGAGACCGAGGAGACCG  
CCTAGAGCGGAGTGAACGGGAGGGGACCGTGGGACCGCTTGATCGTGCAGGACACCTGCTACCAAG  
CGGAGCTTCAAGCAAGGAGTGGAGGAGCGGAGTAGAGAACGGCCCTCCAGCCTGAGGGGCTGCGCAAGG  
CAGCTAGCCTCACGGAGGATCGGGACCGTGGGCGGGATGCCGTGAAGCGAGAAGTGCCTACCCCACT  
GAGCCCCCTGAAGGCGGCTCTCTGAGGAGGAGTTAGAGAAGAAATCCAAGGCTATCATTGAGGAATAT  
CTCCATCTCAATGACATGAAAGAGGCAAGTCCAGTGCCTGAGGAGCTGGCCTCACCTCCTTGTCTTTCA  
TCTTTGTACGGCATGGTGTGAGTCTACGCTGGAGCGCAGTGCCATTGCTCGTGAGCATATGGGGCAGCT  
GCTGCACCAGCTGCTCTGTGCTGGGCATCTGTCTACTGCTCAGTACTACCAAGGGTTGTATGAAATCTTG  
GAATTGGCTGAGGACATGGAAATGACATCCCCACGTGTGGCTACCTAGCGGAACTGGTAACACCCA  
TTCTGCAGGAAGGTGGGTGCCATGGGGGAGCTGTTCAAGGAGATTACAAAGCCTCTGAGACCGTTGGG  
CAAAGCTGCTTCCCTGTTGCTGGAGATCCTGGGCTCCTGTGCAAAAGCATGGGTCTAAAAGGTGGGG  
ACGCTGTGGCGAGAAGCCGGGCTTAGCTGGAAGGAATTTCTACCTGAAGGCCAGGACATTTGGTCAATTG  
TCGCTGAACAGAAGGTGGAGTATACCCTGGGAGAGGAGTCGGAAGCCCTGGCCAGAGGGCACTCCCTC  
CGAGGAGCTGAACAGGCAGCTGGAGAAGCTGCTGAAGGAGGGCAGCAGTAACCAGCGGTGTTGACTGG  
ATAGAGGCCAACCTGAGTGAGCAGCAGATAGTATCCAACACGTTAGTTTCGAGCCCTCATGACGGTGTCT  
GCTATTCTGCAATATTTTTGAGACTCCCTCCGAGTGGACGTTGCAGTGTGAAAGCGCGAGCGAAGCT  
GCTGCAGAAATACCTGTGTGACGAGCAGAAGGAGCTACAGGCGCTCTACGCCCTCCAGGCCCTTGTAGTG  
ACCTTAGAACAGCCTCCCAACCTGCTGCGGATGTTCTTTGACGCACTGTATGACGAGGACGTGGTGAAGG  
AGGATGCCTTCTACAGTTGGGAGAGTAGCAAGGACCCCGCTGAGCAGCAGGGCAAGGGTGTGGCCCTTAA  
ATCTGTACAGCCTTCTCAAGTGGCTCCGTGAAGCAGAGGAGGAGTCTGACCACAAC

ACGCGTACGCGGCCGCTCGAGCAGAAACTCATCTCAGAAGAGGATCTGGCAGCAAATGATATCCTGGATT  
ACAAGGATGACGACGATAAGGTTTAA

**Protein Sequence:** >RC235320 representing NM\_001194947  
 Red=Cloning site Green=Tags(s)

MNKAPQSTGPPPAPSPGLPQPAFPFGQTAPVVFSTPQATQMNTSPQPRQGGFRSLQHFYPSRAQPPSSAA  
 SRVQSAAPARPGPAAHVYPAGSQVMMIPSQISYPASQGYIIPGQGRSTYVVPTQQYVPVPGAGFYPGA  
 SPTEFGTYAGAYPAQGVQVQFPTGVAPAPVLMNQPPQIAPKRERKTIRIRDPNQGGKDITEEIMSGARTA  
 STPTPPQTGGLEPQANGETPQVAVIVRPDDRSQGAIIADRPGLPGPEHSPSESQSPSPPTPSPSPVLE  
 PGSEPNLAVLSIPGDTMTTIQMSVEESTPISRETGEYRLSPEPTPLAEPILVEVTLSPVPESEFSSS  
 PLQAPTPLASHTVEIHEPNGMVPSEDLPEVESSPELAPPPACPSESPVPIAPTAQPEELNNGAPSPPAV  
 DLSPVSEPEEQAKEVTASMAPPTIPSATPATAPSATSPAQEEEMEEEEEEGEAGEAGEAESEKGGEEL  
 LPPESTPIPANLSQNLEAAAATQVAVSVPKRRRIKELNKKEAVGDLLDAFKEANPAVPEVENQPPAGSN  
 PGPESESGVPPRPEEADETWDSKEDKIHNAENIQPGEQKYEYKSDQWKPLNLEEKRYDRELLGFQFI  
 FASMQKPEGLPHISDVVLDKANKTPLRPLDPTLQGINCGPDFTPSFANLGRITLSTRGPPRGGGGELP  
 RGPAGLGPRRSQQGPRKEPRKIATVLMTEEDIKLNKAEKAWKPSKRTAADKDRGEEDADGSKTQDLFRR  
 VRSILNKLTPQMFQQLMKQVTQLAIDTEERLKGVIDLIFEKAISEPNFSVAYANMCRCLMALKVPTTEKP  
 TVTVNFRKLLLNRCQKEFEKDKDDEVFEEKQKEMDEAATAEERGRLEELEEARRIARRSLGNIKFIG  
 ELFKLMLTEAIMHDCVVKLLKNHDEESLECLCRLLTTIGKDLDFEKAKPRMDQYFNQMEKIIKEKTTSS  
 RIRFMLQDVLDLRGSNWVPRRGDQPKTIDQIHKEAEMEEHREHIKVQQLMAKGS DKRRGGPPGPIISRG  
 LPLVDDGGWNTVPI SKGSRPIDT SRLTKITKPGSIDSNQLFAPGGRLSWGKGS SGGGAKPSDAASEAA  
 RPATSTLNRFSALQQAVPTESTDNRRVVQRSSL SRERGEKAGDRGDRLERSERGGDRGDRLD RARTPATK  
 RSFSKEVEERSRERPSQPEGLRKAASL TEDRDRGRDAVKREAALPPV SPLKAAL SEEELEKSKAIEEY  
 LHLNDMKEAVQCVELASPSLLFIFVRHGVESTLERSAIAREHMGQLLHQLLCAGHLSTAQYYQGLYEIL  
 ELAEDMEIDIPHWLYLAELVTPILQEGGVPMGELFREITKPLRPLGKAASLLEILGLLCKSMGPKKVG  
 TLWREAGLSWKEFLPEGQDIGAFVAEQKVEYTLGEESEAPGQRALPSEELNRQLEKLLKEGSSNQRFVDW  
 IEANLSEQQIVSNTLVRALMTAVCYSAIIFETPLRVDVAVLKARAKLLQKYLCEQKELQALYALQALV  
 TLEQPPNLLRMFFDALYDEDVVKEDAFYSWESSKDPAEQQGKGVALKSVTAFFKWLREAEESDHN

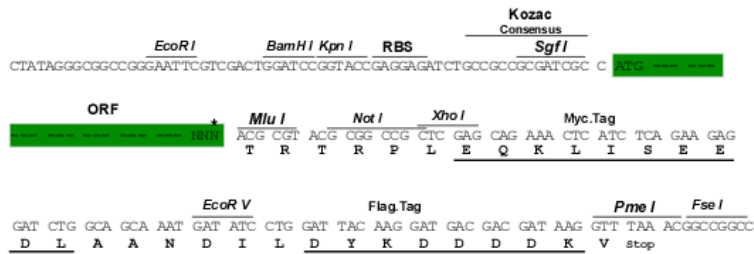
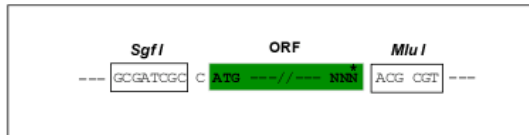
TRTRPLEQKLISEEDLAANDILDYKDDDDKV

**Restriction Sites:**

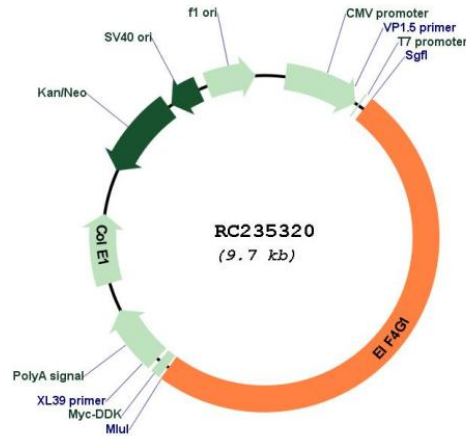
SgfI-MluI

**Cloning Scheme:**

Cloning sites used for ORF Shuttling:



\* The last codon before the Stop codon of the ORF

**Plasmid Map:**


**ACCN:** NM\_001194947

**ORF Size:** 4818 bp

**OTI Disclaimer:** The molecular sequence of this clone aligns with the gene accession number as a point of reference only. However, individual transcript sequences of the same gene can differ through naturally occurring variations (e.g. polymorphisms), each with its own valid existence. This clone is substantially in agreement with the reference, but a complete review of all prevailing variants is recommended prior to use. [More info](#)

**OTI Annotation:** This clone was engineered to express the complete ORF with an expression tag. Expression varies depending on the nature of the gene.

**Components:** The ORF clone is ion-exchange column purified and shipped in a 2D barcoded Matrix tube containing 10ug of transfection-ready, dried plasmid DNA (reconstitute with 100 ul of water).

**Reconstitution Method:**

1. Centrifuge at 5,000xg for 5min.
2. Carefully open the tube and add 100ul of sterile water to dissolve the DNA.
3. Close the tube and incubate for 10 minutes at room temperature.
4. Briefly vortex the tube and then do a quick spin (less than 5000xg) to concentrate the liquid at the bottom.
5. Store the suspended plasmid at -20°C. The DNA is stable for at least one year from date of shipping when stored at -20°C.

**RefSeq:** [NM\\_001194947.1](#), [NP\\_001181876.1](#)

RefSeq Size: 5502 bp

RefSeq ORF: 4821 bp

Locus ID: 1981

Cytogenetics: 3q27.1

Protein Pathways: Viral myocarditis

MW: 176.7 kDa

**Gene Summary:** The protein encoded by this gene is a component of the multi-subunit protein complex EIF4F. This complex facilitates the recruitment of mRNA to the ribosome, which is a rate-limiting step during the initiation phase of protein synthesis. The recognition of the mRNA cap and the ATP-dependent unwinding of 5'-terminal secondary structure is catalyzed by factors in this complex. The subunit encoded by this gene is a large scaffolding protein that contains binding sites for other members of the EIF4F complex. A domain at its N-terminus can also interact with the poly(A)-binding protein, which may mediate the circularization of mRNA during translation. Alternative splicing results in multiple transcript variants, some of which are derived from alternative promoter usage. [provided by RefSeq, Aug 2010]