

## Product datasheet for **RC235317**

### SLIT3 (NM\_001271946) Human Tagged ORF Clone

#### Product data:

**Product Type:** Expression Plasmids  
**Product Name:** SLIT3 (NM\_001271946) Human Tagged ORF Clone  
**Tag:** Myc-DDK  
**Symbol:** SLIT3  
**Synonyms:** MEGF5; SLIL2; Slit-3; SLIT1; slit2  
**Vector:** pCMV6-Entry (PS100001)  
**E. coli Selection:** Kanamycin (25 ug/mL)  
**Cell Selection:** Neomycin  
**ORF Nucleotide Sequence:** >RC235317 representing NM\_001271946  
Red=Cloning site Blue=ORF Green=Tags(s)

TTTTGTAATACGACTCACTATAGGGCGCCGGGAATTCGTCGACTGGATCCGGTACCGAGGAGATCTGCC  
GCC**CGGATCGCC**

ATGGCCCCGGGTGGGCAGGGTTCGGCGCCGCGTGGCGCCCGCTGGCGCTGGCCTTGGCGCTGGCGA  
GCGTCTGAGTGGGCTCCAGCCGTCGCTGCCACCAAGTGTACCTGCTCCGCTGCCAGCGTGGACTG  
CCACGGGCTGGGCTCCGCGGTTCTCGGGCATCCCCGCAACGCTGAGCGCCTTACCTGGACAGA  
AATAATATCACCAGGATACCAAGATGGACTTCGCTGGGCTCAAGAACCTCCGAGTCTTGATCTGGAAG  
ACAACCAGGTCAGCGTCATCGAGAGAGGGCGCTCCAGGACCTGAAGCAGCTAGAGCGACTGCGCCTGAA  
CAAGAATAAGCTGCAAGTCTTCCAGAATTGCTTTCCAGAGCACGCCGAAGCTCACCAGACTAGATTTG  
AGTGAAAACCAGATCCAGGGGATCCCGAGGAAGGCGTTCCGCGGCATCACCGATGTGAAGAACCTGCAAC  
TGGACAACAACCACATCAGCTGCATTGAAGATGGAGCCTCCGAGCGCTGCGCGATTTGGAGATCCTTAC  
CCTCAACAACAACAACATCAGTCGCATCCTGGTCACCAGCTTCAACCACATGCCGAAGATCCGAACCTG  
CGCCTCCACTCCAACCACCTGTACTGCGACTGCCACCTGGCTGGCTCTCGGATTGGCTGCGACAGCGAC  
GGACAGTTGGCCAGTTCACACTCTGCATGGCTCCTGTGCATTTGAGGGGTTCAACGTGGCGGATGTGCA  
GAAGAAGGAGTACGTGTGCCAGCCCCACTCGAGCCCCATCCTGCAATGCCAACTCCATCTCTGCG  
CCTTCGCCCTGCACGTGCAGCAATAACATCGTGGACTGTGAGGAAAGGGCTTGTGAGATTCTTGCCA  
ACTTGCCGGAGGGCATCGTCAAAATACGCCTAGAACAGAACTCCATCAAAGCCATCCCTGCAGGAGCCTT  
CACCCAGTACAAGAACTGAAGCGAATAGACATCAGCAAGAATCAGATATCGGATATTGCTCCAGATGCC  
TTCCAGGGCTGAAATCACTCACATCGTGGTCTGTATGGGAACAAGATCACCGAGATTGCCAAGGGAC  
TGTTTGTGGGCTGGTGTCCCTACAGCTGCTCCTCCTCAATGCCAACAAGATCAACTGCCTGCGGGTGAA  
CACGTTTCAGGACCTGCAGAACCTCAACTGCTCTCCCTGTATGACAACAAGCTGCAGACCATCAGCAAG  
GGGCTCTTCGCCCTCTGCAGTCCATCCAGACTCCACTTAGCCAAAACCCATTTGTGTGCGACTGCC  
ACTTGAAGTGGCTGGCCGACTACCTCCAGGACAACCCATCGAGACAAGCGGGGCGCGCTGCAGGAGCCC  
GCGCCGACTCGCCAACAAGCGCATCAGCCAGATCAAGAGCAAGAAGTTCCGCTGCTCAGGCTCCGAGGAT  
TACCGCAGCAGGTTACGAGCGAGTGCTTCATGGACCTCGTGTGCCCGAGAAGTGTGCTGTGAGGGCA



[View online »](#)

CGATTGTGGACTGCTCCAACCAGAAGCTGGTCCGCATCCCAAGCCACCTCCCTGAATATGTCACCCGACCT  
 GCGACTGAATGACAATGAGGTATCTGTTCTGGAGGCCACTGGCATCTTCAAGAAGTTGCCAACCTGCGG  
 AAAATAAATCTGAGTAACAATAAGATCAAGGAGGTGCGAGAGGGAGCTTTCGATGGAGCAGCCAGCGTGC  
 AGGAGCTGATGCTGACAGGGAACCAAGCTGGAGACCGTGCACGGGCGCGTGTTCGGTGGCCTCAGTGGCCT  
 CAAAACCTTGATGCTGAGGAGTAACCTTGATCGGCTGTGTGAGTAATGACACCTTTGCCGGCCTGAGTTCCG  
 GTGAGACTGCTGTCCCTCTATGACAATCGGATCACCACCATCACCCTGGGGCCTTACCACGCTGTGTCT  
 CCCTGTCCACCATAAACCTCCTGTCCAACCCTTCAACTGCAACTGCCACCTGGCCTGGCTCGGCAAGTG  
 GTTGAGGAAGAGGCGGATCGTCAGTGGGAACCCTAGGTGCCAGAAGCCATTTTTCTCAAGGAGATTCCC  
 ATCCAGGATGTGGCCATCCAGGACTTCACTGTGATGGCAACGAGGAGAGTAGCTGCCAGCTGAGCCCGC  
 GCTGCCCGGAGCAGTGCACCTGTATGGAGACAGTGGTGCATGCAGCAACAAGGGGCTCCGCGCCCTCCC  
 CAGAGGCATGCCAAGGATGTGACCGAGCTGTACCTGGAAGGAAACCACCTAACAGCCGTGCCAGAGAG  
 CTGTCCGCCCTCCGACACCTGACGCTTATTGACCTGAGCAACAACAGCATCAGCATGCTGACCAATTACA  
 CCTTCAGTAACATGTCTCACCTCCTCACTGTATCCTGAGCTACAACCGGCTGAGGTGCATCCCCGTCCA  
 CGCCTTCAACGGGCTGCGGTCCCTGCGAGTGCTAACCCCTCCATGGCAATGACATTTCCAGCGTTCCTGAA  
 GGCTCCTTCAACGACCTCACATCTTTCCCATCTGGCGCTGGGAACCAACCACCTCCACTGTGACTGCA  
 GTCTTCGGTGGCTGTCCGAGTGGGTGAAGGCGGGGTACAAGGAGCCTGGCATCGCCCGCTGCAAGTACCC  
 TGAGCCCATGGCTGACAGGCTCCTGCTCACCACCCCAACCACCGCTTCCAGTGCAAAAGTACTCTGGTTT  
 TGCTGCCAGGGCCAGTGGACATCAACATTGTGGCCAAATGCAATGCCTGCCTCTCCAGCCCGTGAAGA  
 ATAACGGGACATGCACCCAGGACCCTGTGGAGCTGTACCGCTGTGCCTGCCCTACAGCTACAAGGGCAA  
 GGACTGCACTGTGCCATCAACACCTGCATCCAGAACCCTGTGAGCATGGAGGCACCTGCCACCTGAGT  
 GACAGCCACAAGGATGGGTTTCACTGCTCCTGCCCTCTGGGCTTTGAGGGGCAGCGGTGTGAGATCAACC  
 CAGATGACTGTGAGGACAACGACTGCGAAAACAATGCCACCTGCGTGGACGGGATCAACAACCTAGTGTG  
 TATCTGTCCGCCCTAACTACACAGGTGAGCTATGCGACGAGTGATTGACCACTGTGTGCCGTGCAAGTGA  
 CTCTGTACAGCATGAGGCCAAGTGATCCTCCCTGGACAAAAGGATTAGCTGCGAGTGTGTCCCTGGCTACA  
 GCGGGAAGCTCTGTGAGACAGACAATGATGACTGTGTGGCCACAAGTCCGCGCCACGGGGCCAGTGCCT  
 GGACACAATCAATGGCTACACATGCACCTGCCCCAGGGCTTCACTGGACCCCTTCTGTGAACACCCCCCA  
 CCCATGGTCTACTGCAGACCAGCCATGCGACCAGTACGAGTGCAGAACGGGGCCAGTGCATCGTGG  
 TGCAGCAGGAGCCACCTGCCGCTGCCACCAGGCTTCCGCGGCCCCAGATGCGAGAAGCTCATCACTGT  
 CAACTTCGTGGGCAAAGACTCCTACGTGGAACCTGGCTCCGCCAAGGTCGACCCAGGCCAACATCTCC  
 CTGCAGGTGGCCACTGACAAGGACAACGGCATCCTTCTCTACAAAGGAGACAATGACCCCTGGCACTGG  
 AGCTGTACCAGGGCCACGTGCGGCTGGTCTATGACAGCCTGAGTTCCTCCCAACCACAGTGTACAGTGT  
 GGAGACAGTGAATGATGGGCAGTTTACAGTGTGGAGCTGGTGCAGCTAAACCAGACCCTGAACCTAGTA  
 GTGGACAAGGAACCTCAAAGAGCCTGGGGAAGCTCCAGAAGCAGCCAGCAGTGGGCATCAACAGCCCCC  
 TCTACCTTGGAGGCATCCCCACCTCCACCAGGCTCCTGTGCCTTGCGCCAGGGCACGGACCGGCTTAGG  
 CGGCTTCCACGGATGCATCCATGAGGTGCGCATCAACAACGAGCTGCAGGACTTCAAGGCCCTCCCACCA  
 CAGTCCCTGGGGGTGTACCAGGCTGCAAGTCTGCACCGTGTGCAAGCACGGCCTGTGCCGCTCCGTGG  
 AGAAGGACAGCGTGGTGTGCGAGTGCAGCCAGGCTGGACCGGCCACTTCCGATCAGGAGGCCCGGGA  
 CCCCTGCCTCGGCCACAGATGCCACCATGGAAAATGTGTGGCAACTGGGACCTCATAATGTGCAAGTGT  
 GCCGAGGGCTATGGAGGGGACTTGTGTGACAACAAGAATGACTTGCCAATGCCTGCTCAGCCTTCAAGT  
 GTCACCATGGGCAGTGCCACATCTCAGACCAAGGGGAGCCCTACTGCCTGTGCCAGCCCGGCTTTAGCGG  
 CGAGCACTGCCAACAAGAGAATCCGTGCCTGGGACAAGTGTCCGAGAGGTGATCCGCGCCAGAAAGGT  
 TATGCATCATGTGCCACAGCCTCCAAGGTGCCATCATGGAATGTGCGGGGGCTGTGGGCCCAAGTGT  
 GCCAGCCACCCGAGCAAGCGGCGAAAATACGTCTTCCAGTGCACGGACGGCTCCTCGTTGTAGAAGA  
 GGTGGAGAGACACTTAGAGTGGGCTGCCTCGCGTGTTC

ACGCGTACGCGGCCGCTCGAGCAGAACTCATCTCAGAAGAGGATCTGGCAGCAATGATATCCTGGATT  
 ACAAGGATGACGACGATAAGGTTTAA

**Protein Sequence:** >RC235317 representing NM\_001271946  
 Red=Cloning site Green=Tags(s)

```

MAPGWAGVGA AVRARLALALASVLSGPPAVACPTKCTCSAASVDCHLGLRAVPRGIPRNERLDLDR
NNITRITKMDFA GLKNLRVHLLEDNQVSVIERGAFQDLKQLERLRNKNKLOVLP ELLFQSTPKLTRLDL
SENQIQGIPRKA FRGITDVKNLQLDNNHISCI EDGAFRALRDLEILTLN NNNISRI LVT SFNHMPKIRTL
RLHSNHL YCDCHLAWLSDWLRQRRTVGQFTLCMAPVHLR GFNVADVQKKEYVCPAPHSEPPSCNANSISC
PSPCTCSNNI VDCRGKGLMEIPANLPEGIVEIRLEQNSIKAIPAGAF TQYKLLKRIDISKNQISDIAPDA
FQGLKSLTSLVLYGNKITEIAKGLFDGLVSLQLLLL NANKINCLRVNTFQDLQNLNLLSLYDNKLQTI SK
GLFAPLQSIQTLHLAQNPFCVCDCHLKWADYLQDNPIETSGARCSSPRRLANKRISQIKSKKFRCSGSED
YRSRFSSECFMDLVCPEKCRCEGTIVDCSNQKLVRI PSHLPEYVTDLRLNDNEVSVLEATGIFKKLPNLR
KINLSNNKI KEVREGAFDGAASVQELMLTGNQLETVHGRVFRGLSGLKTLMLRSNLIGCVSNDTFAGLSS
VRLLSLYDNRITITPGAF TTVLSLSTINLLSNPFNCNCHLAWLGKWLKRRIVSGNPRCQKPFFLKEIP
IQDVAIQDFTCDGNEESSQLSPRCPEQCTCMETVVRCSNKGLRALPRGMPKDVTELYLEG NHLTAVPRE
LSALRHLTLIDL SNNSISMLTNYTF SNMSHLSTLILSYNRLRCIPVHAFNGLRSLRVLTLHGNDISSVPE
GSFNDLTSLSHLALGTNPLHCDCLRWLSEWVKAGYKEPGIARCSSPEPMADRLLLTTPTHR FQCKVLWF
CCPGPVDINIVAKNA CLSSPCKNNGTCTQDPVELYRCACPYSYKGDCTVPINTCIQNP CQHGGTCHLS
DSHKDGFSCSCLPFEGQRCEINPDDCEDNDCENNATCVDGINNYVICPPNYTGELCDEVIDHCPELN
LCQHEAKCIPLDKGFSCECVPGYSGKLCETDNDDCVAHKCRHGAQCVD TINGYTCTCPQGFSGPFCEHPP
PMVLLQTSPCDQYECQNGAQCI VVQQEPTCRCPGFAGPRCEKLI TVNFVGKDSYVELASAKVRPQANIS
LQVATDKDNGILLYKGDNDPLALEL YQGHVRLVYDSLSSPPTTVYSVETVNDGQFHVELVTLNQTNLNV
VDKGTPKSLGKLQKQPAVGINSPLYLGGIPTSTGLSALRQGTDRPLGGFHGCIHEVRINNELQDFKALPP
QSLGVSPGCKSCTVCKHGLCRSVEKDSVCECRPGWGTGPLCDQEARDPCLGHRCHHGKCVATGTSYMCKC
AEGYGGDLCDNKND SANACSAFAKCHHGQCHI SDQGEPYCLCQPGFSGEHCQQENPLGQV VREVIRRQKG
YASCATASKVPI MECRGGCGPQCQPTRSKRRKYVFQCTDGSSFVEEVERHLECGCLACS
  
```

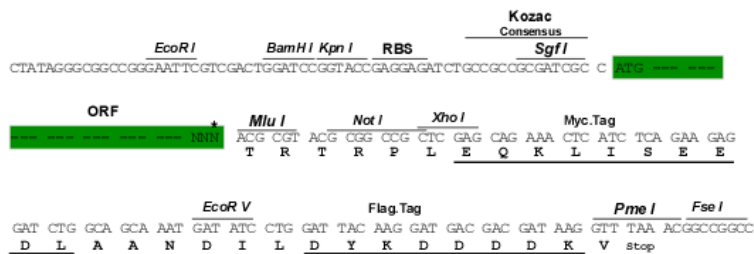
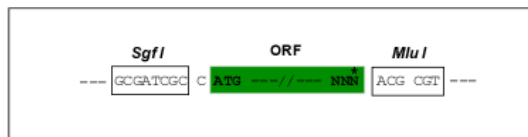
TRTRPLEQKLISEEDLAANDILDYKDDDDKV

**Restriction Sites:**

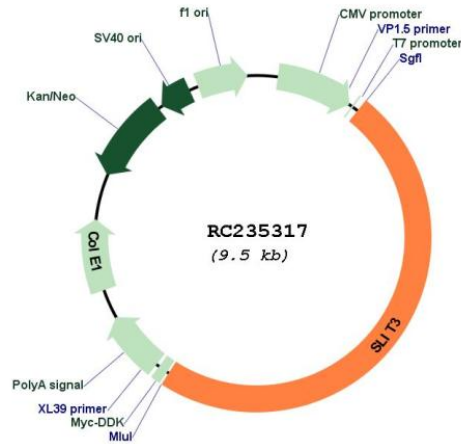
SgfI-MluI

**Cloning Scheme:**

Cloning sites used for ORF Shuttling:



\* The last codon before the Stop codon of the ORF

**Plasmid Map:**


- ACCN:** NM\_001271946
- ORF Size:** 4590 bp
- OTI Disclaimer:** The molecular sequence of this clone aligns with the gene accession number as a point of reference only. However, individual transcript sequences of the same gene can differ through naturally occurring variations (e.g. polymorphisms), each with its own valid existence. This clone is substantially in agreement with the reference, but a complete review of all prevailing variants is recommended prior to use. [More info](#)
- OTI Annotation:** This clone was engineered to express the complete ORF with an expression tag. Expression varies depending on the nature of the gene.
- Components:** The ORF clone is ion-exchange column purified and shipped in a 2D barcoded Matrix tube containing 10ug of transfection-ready, dried plasmid DNA (reconstitute with 100 ul of water).

<b>Reconstitution Method:</b>	<ol style="list-style-type: none"><li>1. Centrifuge at 5,000xg for 5min.</li><li>2. Carefully open the tube and add 100ul of sterile water to dissolve the DNA.</li><li>3. Close the tube and incubate for 10 minutes at room temperature.</li><li>4. Briefly vortex the tube and then do a quick spin (less than 5000xg) to concentrate the liquid at the bottom.</li><li>5. Store the suspended plasmid at -20°C. The DNA is stable for at least one year from date of shipping when stored at -20°C.</li></ol>
<b>RefSeq:</b>	<u>NM_001271946.1</u> , <u>NP_001258875.1</u>
<b>RefSeq Size:</b>	9748 bp
<b>RefSeq ORF:</b>	4593 bp
<b>Locus ID:</b>	6586
<b>UniProt ID:</b>	<u>O75094</u>
<b>Cytogenetics:</b>	5q34-q35.1
<b>Protein Families:</b>	Druggable Genome, Secreted Protein
<b>Protein Pathways:</b>	Axon guidance
<b>MW:</b>	169 kDa
<b>Gene Summary:</b>	The protein encoded by this gene is secreted, likely interacting with roundabout homolog receptors to effect cell migration. Two transcript variants encoding different isoforms have been found for this gene. [provided by RefSeq, Dec 2012]