

Product datasheet for RC235316

CUX1 (NM_001202543) Human Tagged ORF Clone

Product data:

Product Type:	Expression Plasmids
Product Name:	CUX1 (NM_001202543) Human Tagged ORF Clone
Tag:	Myc-DDK
Symbol:	CUX1
Synonyms:	CASP; CDP; CDP/Cut; CDP1; Clox; COY1; CUTL1; CUX; Cux/CDP; GDDI; GOLIM6; Nbla10317; p75; p100; p110; p200
Mammalian Cell Selection:	Neomycin
Vector:	pCMV6-Entry (PS100001)
E. coli Selection:	Kanamycin (25 ug/mL)
ORF Nucleotide Sequence:	>RC235316 representing NM_001202543 Red=Cloning site Blue=ORF Green=Tags(s)

TTTTGTAATACGACTCACTATAGGGCGGCCGGAATTCGTCGACTGGATCCGGTACCGAGGAGATCTGCC
GCCGCGATCGCC

ATGGCGGCAATGTGGGATCGATGTTTCAATATTGGAAGCGCTTTGATTTACAGCAGCTGCAGAGAGAAC
TCGATGCCACCGCAACGGTATTGGCAACCGCAGGATGAAAGTGAGCAGTCCAGAAAGCGGCTTATCGA
ACAGAGCCGGGAGTTCAAGAAGAACAACCTCCAGAGGATTTGCGCAAGCAGGTAGCGCCGCTGCTGAAGAGT
TTCCAAGGAGAGATTGATGCACTGAGTAAAAGAAGCAAGGAAGCTGAAGCAGCTTTCTTGAATGTCTACA
AAAGATTGATTGACGTCCAGATCCCGTACCAGCTTTGGATCTCGGACAGCAACTCCAGCTCAAAGTGCA
GCGCTGCACGATATTGAAACAGAGAACCAGAACTTAGGGAACTCTGGAAGAATACAACAAGGAATTT
GCTGAAGTGAAAAATCAAGAGGTTACGATAAAAGCACTTAAAGAGAAAAATCCGAGAATATGAACAGACAC
TGAAGAACAAGCCGAAACCATAGCTCTTGAGAAGGAACAGAAGTTACAGAATGACTTTGCAGAAAAGGA
GAGAAAAGCTGCAGGAGACACAGATGTCCACCACCTCAAAGCTGGAGGAAGCTGAGCATAAGGTTACAGC
CTACAAACAGCCCTGAAAAAACTCGAACAGAATTATTTGACCTGAAAACCAAATACGATGAAGAAACTA
CTGCAAAGGCCGACGAGATTGAAATGATCATGACGGACCTTGAAGGGCAAACAGAGGGCAGAGGTGGC
TCAGAGAGAGGGCGGAGACCTTAAGGGAACAGCTCTCATCGGCCAATCACTCCCTCCAGCTGGCCTCACAG
ATCCAGAAGGCACCAGACGTGGAGCAGGCCATAGAGGTGCTGACCCGCTCCAGCCTAGAAGTTGAGTTGG
CCGCCAAGGAGCGGGAGATCGCACAGCTGGTGGAGGACGTGCAGAGACTCCAGGCCAGCCTACCAAGCT
CGGGGAGAAATTCGGCCAGCCAGATCTCACAGCTTGAGCAGCAGCTGAGCGCCAAAAACAGCACACTCAA
CACTGGAAGAAAAAACTCAAAGGCCAGGCTGACTATGAAGAGGTGAAGAAAGAGCTGAACATTTCTGAAGT
CCATGGAGTTTGACCCGTCCGAGGGCGTGGGACACAGGATGCGGCCAAGCCCTGGAGGTGCTGTTGCT
GGAGAAGAACCGCTCGCTGCAGTCCGAGAACGCCGCGCTGCGCATCTCCAACAGCAGCCTGAGCGGGTCA
GCCAGGAGGAAAGGAAAGACCAGCCTGAAAGTCGGCGCCCGGATCTTTGCCGGCCCCCTCCTTCTC
AGTTGCCCGCAACCCGGGGGAGCAGGCTTCCAATACTAATGGTACACACCAGTTCTCACCAGCGGGGT



AAGTCAAGACTTTTTTCAGCTCATCCCTGGCAAGCCCCAGCCTACCCCTGGCTTCTACAGGAAAATTTGCA
 CTAAACTCTTTCTCCAGCGCAGCTAATGCGATCCTTCTACTCCAAGGCTATGCAGGAAGCCGGAAGCA
 CAAGCATGATTTTTTCAACAGGTCCATACAGCACAAAATCCATATCTTCCCAAAGTCCATTACAACAAAG
 CCCAGATGTCAATGGCATGGCCCCATCCCCAGCCAGTCAGAAAGTGCTGGGAGCGTCTCCGAGGGCGAG
 GAGATGGACACTGCAGAAATCGCCCGCAGGTCAAAGAGCAGCTGATTAAGCACAATATCGGACAACGTA
 TTTTCGGACATTATGTGTTGGGACTGTCTCAAGGGTCCGTGAGCGAGATTCTGGCCCGCCCAAGCCATG
 GAATAAACTGACTGTTCTGGCAAGGACCATTTTCAAGAATGAAACAGTTCCTCTCCGATGAGCAGAA
 ATCCTGGCCCTCCGTAGCATCCAAGGCAGACAAAAGAGAGAATCCAGGCCAGAGCCTGAACAGACTATTTT
 AGGAAGTACCGAAACGAAGAAATGGGTCTGAAGGTAACATCACCACCCGGATCCGAGCCTCGGAGACTGG
 CTCTGATGAAGCCATCAAGTCCATCCTAGAGCAAGCCAAGAGGGAGCTCCAAGTGCAGAAAATGCAGAG
 CCGGCCAGCCTTCTCCGCATCCGGCAGCGGAACTCTGATGACGCCATCCGCTCCATCCTGCAGCAAG
 CCCGCCGGGAGATGGAGGCCAGCAGGCTGCCCTGACCCCTGCCCTAAAGCAGGCACCACTGTCCCAGAG
 TGACATCACCATCCTACCCCAAGCTTCTGTCCACCTCGCCATGCCACCCTGTCCAGCTACCCACT
 CTCGCCATCTCCCTGAAGAAGCCCTCCGCAGCTCCTGAGGCCGGTGCCTCTGCTCTGCCAACCCTCCGG
 CCCTCAAAAAGGAGGCCAGGACGCCCCGGGCTGGACCCCAAGGAGCAGCCGATTGTGCACAAGGGGT
 CCTGAGACAGGTGAAAAATGAGGTGGGCCGAGCGGTGCCTGGAAGGACCACTGGTGGAGCGCGGTGCAG
 CCGGAGAGAAGAAATGCCGCTCCTCCGAGGAGGCCAAGGCCGAAGAAACGGGCGCGGGAAAGAGAAGG
 GCAGCGGTGGCAGCGGAGGTGGCAGCCAGCCTCGGGCCGAGCGCAGTCAGCTCCAGGGACCTCGTCTGTC
 AGAGTACTGGAAGGAGTGGCCAGCGCTGAGTCCCATACTCCAGAGCTCAGAGCTGAGTCTGACCGGG
 GCCAGCCGAGCGAGACACCACAGAACAGCCCCCTGCCATCCTCCCGATCGTGCCCATGTCCAAGCCCA
 CCAAGCCCTCGTCCCCCGTGAACCCGAGCAGTACGAGGTCTACATGTACCAGGAGTGGACACCAT
 CGAGCTCACCCGGCAGGTTAAGGAAAAGCTGGCCAAGAACGGCATCTGCCAGAGAATCTTCGGGGAGAAG
 GTCTGGGCTGTCCCAGGGCAGCTCAGCGACATGCTGTCCCGACCGAAGCCATGGAGCAAGTGAAGC
 AGAAAGGCCGAGAACCCTTCATCCGGATGCAGCTCTGGCTGAACGGCGAGCTAGGCCAGGTGTTCTACC
 CGTCCAGGGCCAGCAGCAAGGGCAGTCTCCTCCTGACATCGCTCCAGGACCCGCTGCAGCAGGGC
 TGTGTGAGCTCAGAAAGCACTCCAAGACCTCCGCCAGCTGCAGCCCTGCCCTGAGTCCCCGATGAGTT
 CCAGTGTGAGTGGTGAAGAGCCTGACCGAGCTGGTCCAGCAGCCCTGTCCCCCATCGAGGCGAGCAAGGA
 CAGCAAGCCACCAGAGCCAGTGAACCGCAGCATCCGACTCCCAGCCACAACCCCGCTGCCTCTCTCC
 GGACTCGGCCCTCAGCATCCAAGAATTAGTAGCCATGTCCCCGGAGCTGGACACCTACGGCATAACCA
 AGCGGGTGAAGGAGGTGCTGACGGACAACAACCTCGGCCAGCGCTATTTGGGGAGACCATCTTAGGGCT
 CACCCAAGGCTCTGTCTCTGACCTCCTTCCCCGCCCAACCCTGGCATAAGCTCAGTCTGAAAGGACGA
 GAGCCCTTCGTCCGGATGCAGCTGTGGCTGAACGACCCCAACAATGTGGAGAAGCTGATGGACATGAAAC
 GGATGGAGAAGAAAGCCTACATGAAGCGGCGGCACAGCTCAGTCAGTGCAGCCAGCCCTGCGAACCGCC
 CTCTGTGGCACCAGTACAGCCAGGGCGCCAGCCCCAGCCCCAGCACCAGCTGAAGAAAACCCCGGGTGT
 GTGCTGGTCCGGAGGAGAAGGAGGCGCTGAAACGAGCGTATCAGCAAAAGCCATACCCGTACCAAAAA
 CCATCGAAGACCTCGCCACCCAGCTCAACCTGAAAACAGCACCCTCATCAACTGGTCCACAACACAG
 GTCTCGGATCCGCAGAGAACTGTTATTGAGGAAATTCAGGCCGGGAGTCAAGGCCAGGCCGGGCGCCAGC
 GACTCACCTCGGCCCGCAGCGGGCGGGCGCCAGCTCGGAGGGCGACAGCTGCGACGGCGTGGAGG
 CCACTGAGGGCCAGGCAGCGCCGACACCGAGGAGCCCAAGTCTCAGGGAGAGCCGAGCGGGAGGAGGT
 GCCGCGGCCGGCGAGCAGACGGAGCCGCGCCCTCGGGGACCCCGGGCCGGAGCAGCCCGCGACGAC
 GACCACGAGGGAGGCCCGTGAAGGCCCGGGGCCCTGCCAGCCCGCTCCGCGACCCGCCACCGCCG
 CGCCCGGGCCCCGAGGACGCCCTACCTCAGCCGCGCGCGCGGGGAGGGCCCCGCGGCCCGAG
 CTCCGCGCGCCCGCCAGCAACAGCAGCAGCAGCAGCGCCCCCGCAGGCCAGCTCGCTGCAGAGCCTT
 TTCGGCTCCCCGAGGCCGCGGGCGCCGGACTCGCGGACAACCCCTGCGCAAGAAGAAGGCCCGCA
 ACTTGAACAGCATCATCCACCGCTGGAGAAGGCCCGCAGCCGGGAGAACCTATCGAATGGGAGTTC

ACGCGTACGCGGCCGCTCGAGCAGAACTCATCTCAGAAGAGGATCTGGCAGCAATGATATCTGGATT
 ACAAGGATGACGACGATAAGGTTTAA

Protein Sequence: >RC235316 representing NM_001202543
 Red=Cloning site Green=Tags(s)

MAANVGSMFQYWKRFDLQQLQRELDATATVLANRQDESEQSRKRLIEQSREFKKNTPEDLRKQVAPLLKS
 FQGEIDALSKRSKEAEEAFLNVYKRLIDVPDPVPALDLGQQLQLKVQRLHDIETENQKLRETL EEYNKEF
 AEVKNQEVTIKALKEKIREYEQT LKNQAE TIALEKEQKLQNDFAEKERKLQETQMSTTSKLEEAHKVQS
 LQTALEKTRTELFDLTKTYDEETAKADEIEMIMTDLERANQRAEVAQREAE TLRQLSSANHS LQLASQ
 IQKAPDVEQAIEVLTRSSLEVELAAKEREIAQLVEDVQRLQASLTKLRENSASQISQLEQQLSAKNSTLK
 QLEEKLGQADYEEVKELNILKSMFAPSEGAGTQDAAKPLEVLLLEKNRSLQSENAALRISNSDLSGS
 ARRGKQDPESRRPGSLPAPPSQLPRNPGEASNTNGTHQFSPAGLSQDFFSSSLASPLPLASTGKFA
 LNSLLQRQLMQSFYSKAMQEAGSTSMIFSTGPYSTNSISSQSPLQQSPDVNGMAPSPSQSESAGSVSEGE
 EMDTAEIARQVKEQLIKHNIGQRF GHYV LGLSQGSVSEILARPKPWNKLTVRGKEPFHKMKQFLSDEQN
 ILALRSIQGRQRENPGQSLNRLFQEVPKRRNGSEGNITTRIRASETGSDEAIKSILEQAKRELQVQKTAE
 PAQPSSASGSGNSDDAIRSILQQARREMAQQAALDPALKQAPLSQSDITILTPKLLSTSPMPTVSSYPP
 LAISLKKPSAAPEAGASALPNPPALKKEAQDAPGLDPQGAADCAQGVLRQVKNEVGRSGAWKDHWSAVQ
 PERRNAASSEEAKAEETGGGKEKSGSGSGGSQPRAERSQLQGPSSEYWKWPSAESPSYSSEL SLTG
 ASRSETPQNSPLPSSPIVPMKPTKPSVPPLTPEQYEVYMYQEVDTIELTRQVKEKLAKNGICQRIFGEK
 VLGSLQGSVSDMLSRPKPWSKLTKQGREPFIRMQLWNLGELGQGVLPVQGGQQGPVLHVS LQDPLQQG
 CVSSESTPKTSASCSPAPESPMSSSESVKSLTEL VQQPCPIEASKDSKPEPSDPPASDSQPTTPLPLS
 GHSALSIQELVAMSPELDTYGITKRVKEVLTDNNLGQRLFGETILGLTQGSVSDLLARPKPWHKLSLKGR
 EPFVRMQLWLNPNVVEKLMDMKRMEKKAYMKRRHSSVSDSQCEPPSVGTEYSQGASQPQHQLKKPRV
 VLAPEEKEALKRAYQKPYSPKTIEDLATQLNLKTSTVINWFHNYRSRIRRELFIEEIQAGSQGQAGAS
 DSPSARSGRAAPSSEGDSCDGV EATEGPSADTEEPKSQGEAREEEVPRPAEQTEPPPSGTPGDDARDD
 DHEGGPVEGPGPLPSPASATATAAPAPEADAATSAAAPGEGPAAPSSAPPSSNSSSSSAPRRPSSLQSL
 FGLPEAAGARDSRDNPLRKKKAANLNSIHRLEKAASREEPIEWEF

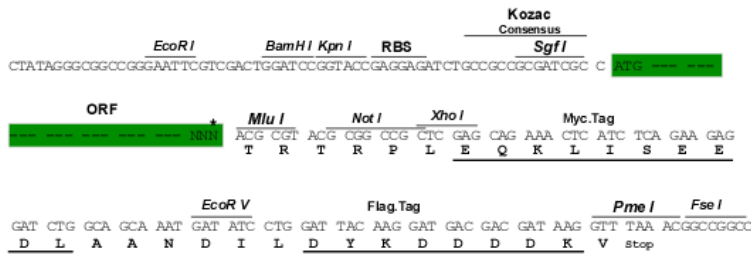
TRTRPLEQKLISEEDLAANDILDYKDDDDKV

Chromatograms: https://cdn.origene.com/chromatograms/ja3230_b09.zip

Restriction Sites: Sgfl-MluI

Cloning Scheme:

Cloning sites used for ORF Shutting:

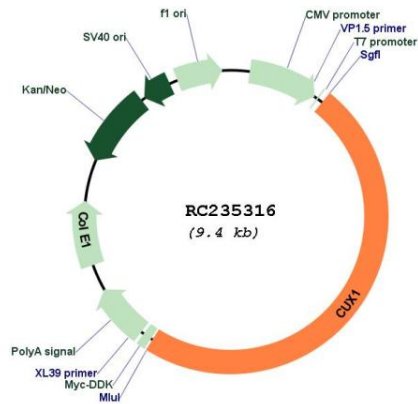


* The last codon before the Stop codon of the ORF

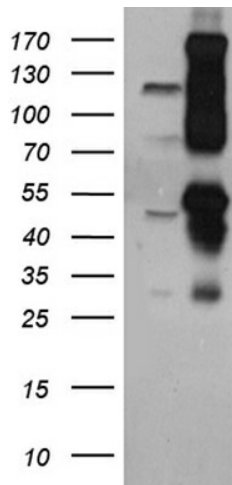
ACCN: NM_001202543

ORF Size:	4548 bp
OTI Disclaimer:	The molecular sequence of this clone aligns with the gene accession number as a point of reference only. However, individual transcript sequences of the same gene can differ through naturally occurring variations (e.g. polymorphisms), each with its own valid existence. This clone is substantially in agreement with the reference, but a complete review of all prevailing variants is recommended prior to use. More info
OTI Annotation:	This clone was engineered to express the complete ORF with an expression tag. Expression varies depending on the nature of the gene.
Components:	The ORF clone is ion-exchange column purified and shipped in a 2D barcoded Matrix tube containing 10ug of transfection-ready, dried plasmid DNA (reconstitute with 100 ul of water).
Reconstitution Method:	<ol style="list-style-type: none">1. Centrifuge at 5,000xg for 5min.2. Carefully open the tube and add 100ul of sterile water to dissolve the DNA.3. Close the tube and incubate for 10 minutes at room temperature.4. Briefly vortex the tube and then do a quick spin (less than 5000xg) to concentrate the liquid at the bottom.5. Store the suspended plasmid at -20°C. The DNA is stable for at least one year from date of shipping when stored at -20°C.
RefSeq:	NM_001202543.2
RefSeq Size:	13882 bp
RefSeq ORF:	4551 bp
Locus ID:	1523
UniProt ID:	P39880
Cytogenetics:	7q22.1
Protein Families:	Transcription Factors, Transmembrane
MW:	165.7 kDa
Gene Summary:	The protein encoded by this gene is a member of the homeodomain family of DNA binding proteins. It may regulate gene expression, morphogenesis, and differentiation and it may also play a role in the cell cycle progression. Several alternatively spliced transcript variants encoding different isoforms have been identified.[provided by RefSeq, Feb 2011]

Product images:



Circular map for RC235316



HEK293T cells were transfected with the pCMV6-ENTRY control (Cat# [PS100001], Left lane) or pCMV6-ENTRY CUX1 (Cat# RC235316, Right lane) cDNA for 48 hrs and lysed. Equivalent amounts of cell lysates (5 ug per lane) were separated by SDS-PAGE and immunoblotted with anti-CUX1 antibody (Cat# [TA890108]). Positive lysates [LY419649] (100ug) and [LC419649] (20ug) can be purchased separately from OriGene.