

## Product datasheet for RC235314

### TEX14 (NM\_001201457) Human Tagged ORF Clone

#### Product data:

Product Type:	Expression Plasmids
Product Name:	TEX14 (NM_001201457) Human Tagged ORF Clone
Tag:	Myc-DDK
Symbol:	TEX14
Synonyms:	CT113; SPGF23
Vector:	pCMV6-Entry (PS100001)
E. coli Selection:	Kanamycin (25 ug/mL)
Cell Selection:	Neomycin
ORF Nucleotide Sequence:	>RC235314 representing NM_001201457 Red=Cloning site Blue=ORF Green=Tags(s)

TTTTGTAATACGACTCACTATAGGGCGCCGGAATTCGTCGACTGGATCCGGTACCGAGGAGATCTGCC  
GCCGCGATCGCC

ATGTCTCGGGCTGTTTCGTTCCAGTCCCCTGTCTGTTCAACTGGTACCTTAAGAAATGACTCCCTGG  
AAGCTCAGTTTCATGAGTATGTCAAACAAGGGAATATGTGAAAGTGAAGAAAATTCCTTAAGAAAGGAAT  
TTATGTTGATGCAGTTAACTCCTGGGCCAAACAGCACATTTTTGTTGCGGCGTTATTGGGCCTTAGGAAA  
TTCGTTGATGTTCTGGTGGATTATGGATCAGATCCAAATCACCGCTGCTTTGATGGGAGCACCCCTGTCC  
ATGCAGCAGCATTTCGGGCAATCAGTGGATCCTTAGCAAATGCTGGATGCAGGAGGTGACCTGCGACT  
CCACGATGAGAGGGGTCAAACCCGAAGACTTGGGCTTTGACAGCAGGAAAGGAGCGTAGCACCCAGATA  
GTGGAGTTCATGCAGCGCTGTGCCTCACACATGCAGGCCATCATCCAGGGCTTCTTTACGACCTCCTGA  
AGAAGATAGACTCCCCGAGCGGCTGTCTACAGCCCGTCTGGTGTGGGGCCCTCGTGCAGGAAACCC  
TAATGGCTCTCCTAACCGACTGCTTAAAGCTGGAGTCAATTTCTGCTCAAATATCTACAGCTTTGGTTTT  
GGGAAGGCTATGCCTTGGTTTTAGTTTTATCTTACTGGGGCAGACAGATGGCCTATCTAGGATCTCTTC  
CGGTCAATGGAGAAAAGGAAGTATTCAAGCTGATGATGAGCCACCTTCTTTTCTTACGCGGCCCTCA  
CATGGTCAATGACCAACCTAGTGTGGAATGGGAGCAGGGTACAGTGAAAGAGCTGAATCTCCCCACCCAC  
CCACACTGCAGCAGGCTGCGGCTGGCCGACTTGTAAATGCGGAGCAGGAACACAGCAGCAAGCTGCGGC  
ACCCCTACTTGCTACAGTTGATGGCTGTGTCTCTCCAGGACCTAGAGAAAACCCGCTTGTGTACGA  
GCGCATCACTATCGGCACATTGTTCAAGTGTCTTTCATGAACGACGGTCCCAGTCCCAGTGTGCACATG  
GAGGTGATTGTGCACCTGCTGCTCCAGATATCTGATGCCCTGAGATACCTGCATTTCCAGGGTTTATCC  
ACCGCTCCCTCAGCTCCTATGCTGTCCATATCATCTCCCAGGTGAAGCGAGGCTGACCAACCTGGAGTA  
CATGTTGGAAAGCGAGGACAGAGGTGTACAGAGGACCTGACTCGAGTGGCCCTTCTACGAGCTATAC  
AACTGGGCGCACCAAGTGTATCTTACAGAAGGCAGCCACAGTGAATCAGACATCTACAGCTTTTCTA  
TGATCATGCAGGAGATTTAACAGATGACATACCTGGAAGGGCTTAGATGGCTCAGTTGTTAAAAAAGC  
CGTAGTCTCGGGGAATTTTAGAAGCTGATGTACAGGCTTCCGAAACCTTACTATGATATTGTTAAGTCA  
GGCATCCACGTCAAGCAGAAAGACCCGAATGAACTTCAAGATATCCGGTATATTCTGAAGAATGACT



[View online »](#)

TAAAGGATTTTACTGGAGCCAGAGAACTCAACCAACCGAGAGCCCCAGAGTGCAGAGATACGGACTCCA  
TCCCGATGTCAATGTCTATCTAGGACTGACTTCAGAACACCCCAGAGAGACACCTGACATGGAAATCATA  
GAACTAAAGGAAATGGGCAGTCAACCTCATTACCAAGGGTTCACCTTTTACTGAGGGGACACTAG  
ATCCTCAGGCCCCAGATCCATGTCTGATGGCCAGGGAGACTCAGAATCAAGATGCTCCTTGCCCTGCTCC  
ATTTATGGCAGAAGAGGCCAGCAGCCCCAGCACAGGTGAGCAAGCCTCTGCAGTTTCGAAATCAACGAG  
ATCTACTCAGGCTGCTTGATTTTGAAGATGACATAGAAGAGCCTCCAGGAGCTGCTTCATCTTTGGAGG  
CAGACGGACCTAACCCAGGTAGATGAACTGAAATCCATGGAAGAAGAGCTGGATAAGATGGAGAGAGAGGC  
GTGTTGTTTTGGCAGTGAGGATGAGAGCTTCCAAAAGCTGAGACAGAGTACTCTTTTGATGACTGGGAC  
TGGCAAAACGGTTCACCTCAGTTCACCTCAGCCTTCTGAGTCAACCAGAGAAGCCAAGAGCAATTTGAACA  
ACATGTCCACGACTGAGGAGTATCTCATCAGTAAGTGTGTGCTGGATCTAAAGATTATGCAGACAATAAT  
GCACGAGAATGATGATAGGCTGAGGAATATCGAGCAGATATTAGATGAAGTCGAGATGAAACAGAAGGAA  
CAGGAAGAGCGCATGTCTTTATGGGCCACTTCAAGAGAGTTTACAAATGCCTACAAGTTACCTCTGGCCG  
TGGGCCCTCCATCTTTAAACTATATTCTCCTGTCTACAGCTTTCAGGGGGTCAAGCCAGACACCAG  
TGGCAACTACCCAACCTACCAAGATTTCCAAGATGCTGCCGACTCTTGTGACCCTGGAAAACAGAAC  
ACAGATGAACAATTTGAGTGCACCTCAAGGAGCCAAGGACAGTTTGGAAAACAGCAGGATCCAAAATACCA  
GTAGCCAGGGAAGACCTAGAGAGTCCACTGCCAAGCCAAGCCACACAGTTAATAGTGCACCTCTTCAC  
TCTGTCAAGCCACCGGCAGGGACCTTCTGCATACCCAGCTGTCACCTGGGACTCTACCAGGATGAGTGTG  
GAACCTGTTTTCTCTGAAATCTATAATGCAGAGTCCAGAAATAAAGATGATGAAAAGGTACACTTAAAT  
GGAAAAATGGAGGTGAAAGAAATGGCAAAGAAAGCAGCTACTGGACAGCTCACAGTACCTCCTTGGCATCC  
TCAGAGTAGTCTGACTTTAGAGAGCGAGGCTGAAAATGAGCCCGACGCCCTGCTGCAGCCCCCATTAGG  
AGCCCAGAAAACCGGATTGGCAGCGAGTATTGAGTATCATAGGGAAAATGATGAGCCCAGAGGAAATG  
GCAAGTTTGACAAGACGGGCAACAATGACTGTGACAGTGACCAGCATGGCAGACAGCCAGGCTTGAAG  
CTTCACCAGTATCAGGCACCCATCTCCAGACAAAAGGAGCAACCAGAGCATAGTGAAGCCTTCCAAGCA  
AGTTCTGACACATTGGTGGCTGTAGAGAAATCTTACAGTCACTAGTCCATGCAATCAACTGTGTTACCCAG  
AGTCTTCTGAGGATATAACAGATGAATTTTTAACTCCAGACGGTGAATTTTTTACTCCTCGACTGCTCA  
AGAAAACCTAGCTCTAGAGACCTCGAGTCCCATAGAAGAGGACTTTGAAGGAATACAAGGTGCATTTGCC  
CAACCTCAAGTCTCTGGTGAAGAAAAGTTCCAAATGAGAAAAATCTTGGAAAAGATGCTGAGATTTTGC  
CCAGGTCTCAATTTCAACCTGTACGAAGTACTGAAGATGAACAAGAAGAGACATCAAAGGAGTCAACAAA  
GGAAGTGAAGAGAAAAGACATATCATTGACGGATATTCAAGACCTGTCTAGTATCTCTATGAACCAGAC  
AGCTCTTTTAAGGAAGCTTCATGCAAAAACCCAAAATAAACCATGCACCTACCAGTGCAGCACTCCAC  
TCAGCCCAGGGTCCGTTTCTTCAGCTGCCAGTCAAGTATAAAGACTGCCTTGAAAGTATCACATTTAGGT  
TAAGACAGAGTTTGCCTCTTGTGGAACAGTCAAGAATTTATTCAAACCTTGTCTGATGACTTTATAAGT  
GTCCGAGAGAGAGCAAAGAACTGGATTCTCTCCTTACTTCTCTGAAACTCCCCCTTCAAGACTGACTG  
GTCTTAAAGATTGTCTTCATTTATTGGGGCTGGATCCCCAGCCTTGTTAAGGCATGTGACTCATCACC  
ACCCCATGCCACCAGAGAAGGAGCCTGCCTAAAGTAGAAGCCTTCTCACAGCATCACATTGATGAGCTG  
CCACCACCATCTCAGGAGCTACTTGATGACATTGAGCTTGAACACAGCAGCAGGGCTCATCCACGGTGT  
TGCATGAGAACACAGCAAGTGTGAGGAGGACTGCAATGATCAAAGGCACTTAGAAGAACAAGAAAC  
TGACAGTAAAAAGAAGATAGTAGTATGCTTTTGTCCAAAAGAACTGAAGATCTTGAGAGGACACAGAG  
AGAGCTCACTCTACTCTGGATGAGGACCTGGAAGATGGCTGCAGCCACCTGAGGAGAGCGTGGAGCTAC  
AAGACCTTCCCAAGGGCTCTGAAAGGGAGACAAATATCAAAGATCAAAAAGTTGGTGAAGAGAAAAGAAA  
AAGGGAAGATAGCATTACACCAGAAAGAAGGAAATCAGAGGGTGTCTAGGGACTTCTGAAGAAGATGAA  
CTAAAATCCTGTTTTTGAAGCGACTAGGTTGGTCCGAATCATCCAGGATAATCGTGTGATGAGAGTGA  
ACTTGTGACAG

ACGCGTACGCGGCCGCTCGAGCAGAACTCATCTCAGAAGAGGATCTGGCAGCAATGATATCCTGGATT  
ACAAGGATGACGACGATAAGGTTTAA

**Protein Sequence:** >RC235314 representing NM\_001201457  
 Red=Cloning site Green=Tags(s)

```
MSRAVRLPVPCPVQLGTLRNDLSLEAQLHEYVKQGNVVKVKKILKKGIYVDAVNSLGQTALFVAALLGLRK
FVDVLVDYGSDPNHRCFDGPSTPVHAAAFSGNQWILSKLLDAGDLRLHDERGQNPKTWALTAGKERSTQI
VEFMQRCASHMQAIIQGF SYDLLKKIDSPQRLVYSPSWCGGLVQGNPNPNSPNRLKAGVISAQNIYSFGF
GKAMPWFQFYLTGATQMAYLGSPLVIGEKEVIQADDEPTFSFFSGPYMVMNTLVWNGSRVTVKELNLP
PHCSRLRLADLLIAEQEHSSKLRHPYLLQLMAVCLSQDLEKTRLVYERITIGTLFVSLHERRSQFPVLHM
EVI VHL LLQISDALRYLHFQGF IHRSLSSYAVHIISPGEARLTNLEYMLESSEDRGVQRDLTRVPLPTQLY
NWAAPVILQKAATVKSDIYSFSMIMQEILTDDIPWKGLDGSVVKKAVVSGNYLEADVRLPKPYDVKVKS
GIHVKQKDRTMNLQDIRYILKNDLKDFTGARTQPTESPRVQRYGLHPDVNVYLGLTSEHPRETPDMEII
ELKEMGSPHSPRVHSLFTEGLDQPAPDCLMARETQNQDAPCPAPFMAEEASSPSTGQP SCSFEINE
IYSGCLILEDDIEEPPGAASSLEADGPNQVDELKSMEEELDKMEREACCFGSEDESSKAETEYSFDDWD
WQNGSLSSLPESTREAKSNLNMSTTEEYLISKCVLDLKIMQTIMHENDRLRNIEQILDEVEMKQKE
QEERMSLWATSREFTNAYKLP LAVGPPSLNYIPPVLQLSGGQKPDTSNGNYPTLPRFPRMLPTLCDPQKQN
TDEQFQCTQGAKDSLET SRIQNTSSQGRPRESTAQAKATQFNSALFTLSSHRQGPSASPSCHWDSTRMSV
EPVSEIYNAESRNKDDGK VHLKWKMEVKEMAKKAATGQLTVPPWHPQSSLTLESEAENEPDALLQPPIR
SPENTDQWRVIEYHRENDEPRGNGKFDKTGNNDSDSDQHGRQPRLSGFTSIRHPSPRQKEQPEHSEAFQA
SSDTLVAVEKSYSHQSMQSTCSPESSEDI TDFLTPDGEYFYSSTAQENLALETSSPIEEDFEGIQGAF
QPQVSGEEKFQMRKILGKNAEILPRSQFQPV RSTEDQEETSKEKPKELKEKDISLTDIQDLSSISYEPD
SSFKEASCKTPKINHAPTSVSTPLSPGVSVAASQYKDCLESITFQVKTEFASCWNSQEFIQTLSDDFIS
VRERAKKLDLSTTSETPPSRLTGLKRLSSF IGAGSPSLVKACDSPPHATQRRSLPKVEAFSQHHIDEL
PPPSQELLDI ELLKQQQGSSTVLHENTASDGGGTANDQRHLEEQETDSKKEDSSMLL SKETEDLGEDTE
RAHSTLDEDLERWLQPPEESVELQDL PKG SERETNIKDQKVGEKREKREDSITPERRKSEGLVLTSEED
LKSCFWKRLGWSESSRIIVLDQSDLS
```

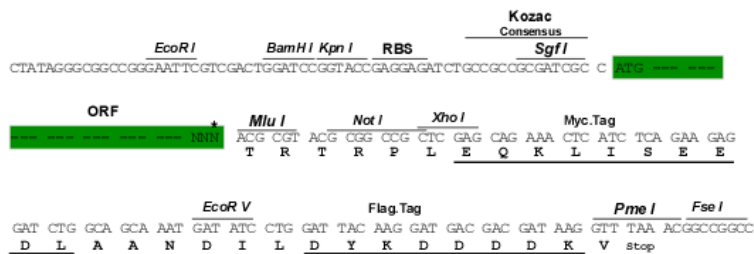
TRTRPLEQKLISEEDLAANDILDYKDDDDKV

**Restriction Sites:**

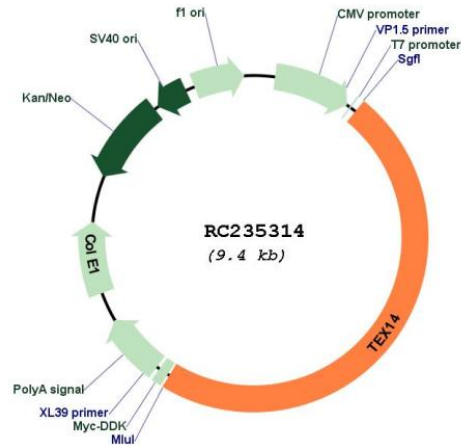
SgfI-MluI

**Cloning Scheme:**

Cloning sites used for ORF Shuttling:



\* The last codon before the Stop codon of the ORF

**Plasmid Map:**


**ACCN:** NM\_001201457

**ORF Size:** 4491 bp

**OTI Disclaimer:** The molecular sequence of this clone aligns with the gene accession number as a point of reference only. However, individual transcript sequences of the same gene can differ through naturally occurring variations (e.g. polymorphisms), each with its own valid existence. This clone is substantially in agreement with the reference, but a complete review of all prevailing variants is recommended prior to use. [More info](#)

**OTI Annotation:** This clone was engineered to express the complete ORF with an expression tag. Expression varies depending on the nature of the gene.

**Components:** The ORF clone is ion-exchange column purified and shipped in a 2D barcoded Matrix tube containing 10ug of transfection-ready, dried plasmid DNA (reconstitute with 100 ul of water).

**Reconstitution Method:**

1. Centrifuge at 5,000xg for 5min.
2. Carefully open the tube and add 100ul of sterile water to dissolve the DNA.
3. Close the tube and incubate for 10 minutes at room temperature.
4. Briefly vortex the tube and then do a quick spin (less than 5000xg) to concentrate the liquid at the bottom.
5. Store the suspended plasmid at -20°C. The DNA is stable for at least one year from date of shipping when stored at -20°C.

**RefSeq:** [NM\\_001201457.2](#)

**RefSeq Size:** 4954 bp

**RefSeq ORF:** 4494 bp

**Locus ID:** 56155

**UniProt ID:** [Q8IWB6](#)

**Cytogenetics:** 17q22

**Protein Families:** Protein Kinase

**MW:** 168.4 kDa

**Gene Summary:** The protein encoded by this gene is necessary for intercellular bridges in germ cells, which are required for spermatogenesis. Three transcript variants encoding different isoforms have been found for this gene.[provided by RefSeq, Jan 2011]