

Product datasheet for **RC235309**

NFAT5 (NM_173215) Human Tagged ORF Clone

Product data:

Product Type:	Expression Plasmids
Product Name:	NFAT5 (NM_173215) Human Tagged ORF Clone
Tag:	Myc-DDK
Symbol:	NFAT5
Synonyms:	NF-AT5; NFATL1; NFATZ; OREBP; TONEBP
Vector:	pCMV6-Entry (PS100001)
E. coli Selection:	Kanamycin (25 ug/mL)
Cell Selection:	Neomycin
ORF Nucleotide Sequence:	>RC235309 representing NM_173215 Red=Cloning site Blue=ORF Green=Tags(s)

TTTTGTAATACGACTCACTATAGGGCGGCCGGAATTCGTCGACTGGATCCGGTACCGAGGAGATCTGCC
GCC**GCGATCGCC**

ATGGGCGGTGCTTGCAGCTCCTTACCACCTCTCCAGCCCTACCATTTATTCTACCTCAGTCACCGACA
GCAAGGCTATGCAAGTGGAGAGCTGCTCCTCAGCCGTGGGGTAAGTAACAGAGGGGTAAGTAAAAAGCA
GTTAACACAGTAACACAGTTCAGCAGCATCCATCAACACCGAAGAGGCACACAGTCTTGATACATCTACCA
CCACCTGAGGACTTGCTGGATAACAGTCGGATGTCCTGCCAGGATGAGGGGTGTGGATTGGAATCTGAGC
AGAGCTGCAGTATGTGGATGGAGGATCCCCCTCCAACCTCAGTAACATGAGCACCAGTTCCTACAATGA
TAACACTGAGGTACCTCGTAAATCACGAAAACGAAATCCAAAGCAGAGGCCGGGGTCAAACGACGAGAT
TGTGAAGAATCTAATATGGATATATTTGATGCCGACAGTGCCAAAGCACCTCACTATGTGCTTTCTCAGC
TTACCACGGACAACAAAGGCAACTCAAAGCGGGAAATGGAACATTGGAAAACAAAAAGGAAGTGGAGT
AAAGAAGAGCCCTATGTTGTGTGGACAATATCCTGTTAAAAGTGAGGGAAAGGAGCTGAAGATAGTTGA
CAACCTGAGACACAGCACCGAGCTCGGTACCTGACTGAGGGCAGCCGTGGCTCAGTGAAGATAGAACAC
AGCAAGGCTTTCCTACAGTAAAGCTGGAAGGCCATAATGAACCTGTAGTGTGCAAGTGTGTTGGGCA
CGACTCTGGACGAGTGAACCACATGGATTTTATCAGGCCTGCAGAGTAACTGGACGAAATACAACCTCT
TGCAAAGAAGTGGACATTGAAGGCACTACTGTTATAGAAGTCGGCCTTGATCCTAGCAACAACATGACAC
TGGCGGTGGACTGCGTAGGGATATTGAAATTGAGGAATGCTGATGTCGAAGCCAGAATAGGAATTGCTGG
TTCCAAGAAGAAAAGCACTCGTGCCAGATTGGTTTTTCGAGTTAATATCATGAGGAAAGATGGCTCCACT
TTGACACTGCAAAACACCCTCTTCTCCAATTTGTGTACTCAGCCAGCAGGAGTGCCAGAAATCTTAAAGA
AAAGCTTGCATAGCTGTTCAAGTAAAGGAGAAGAAGAAGTGTTTTAAATCGGCAAGAAGTCTTCTGAAAGG
AACTAAAGTTATTTTCCAAGAAAATGTTTCTGATGAAAACCTTGAAGTCAGAAGCTGAAATTGATATG
GAACTATTTTCATCAGAATCATCTTATTGTGAAGTTTCTCCCTATCATGACCAACATATAACTTTGCCTG
TGTCAAGTGGGAATATATGTAGTGACAAATGCTGGAAGATCTCATGATGTTCAACCATTCACTTACTCC
AGACCCAGCAGCAGCTGGTGCTTTGAATGTAATGTGAAGAAGGAAATATCTAGTCCAGCAAGACCTTGC
TCTTTTGAAGAGGCCATGAAAGCAATGAAAACACTACTGGATGTAATTTAGATAAGGTAATATTATCCCTA



[View online >](#)

ATGCCCTGATGACTCCAATCATACCAAGCAGTATGATTAAGAGTGAAGATGTTACTCCAATGGAAGTAAC
AGCAGAAAAAGATCTTCCACTATTTTTAAGACTACAAAGTCTGTTGGATCAACTCAGCAAAACATTAGAA
AACATCTCAAACATAGCAGGAAATGGCTCTTTTCATCACCATCATCTTCCCACCTACCTTCTGAAAATG
AAAAACAGCAGCAGATTCAGCCCAAGGCATACAACCCAGAGACCTGACAACATTTCAAACCCAGGACAT
CTCACAGCCTGGTACTTTCCAGCAGTTTCTGCTTCTAGTCAGCTGCCAACAGCGATGCACTATTGCAG
CAGGCTACACAGTTCAGACAAGAGAACTCAGTCTAGAGAGATATTACAGTCAGATGGTACAGTGGTTA
ATTTGTCAAACTGACTGAGGCATCAACAACAGCAGCAGTCAACCTACAAGAACAAGCACAGACTTT
ACAGCAGCAGATTCATCAAATATTTTTCCATCACAAAATAGTGTGAGTCAGCTTCAGAATACTATTTCAG
CAGCTGCAAGCAGGGAGTTTACAGGCAGTACTGCTAGTGGCAGCAGTGGAAAGTGTGACTTGGTCCAAC
AAGTTTTAGAGGCACAGCAGCAGTTATCTTCAGTTTTATTTCTGCTCCAGATGGTAATGAGAATGTTCA
AGAGCAGCTTAGTGCAGATATTTTTCAACAAGTCAGTCAAATTCAGAGTGGTGAAGCCCTGGAATGTTT
TCCTCAACAGAGCCAACAGTCCATACCAGACCAGATAATTTATTACCTGGAAGAGCTGAAAGTGTTCATC
CACAGTCTGAAAACACGTTATCTAATCAACAGCAGCAGCAGCAGCAACAGCAAGTATGGAATCTTC
AGCCGCAATGGTATGGAGATGCAACAGAGTATCTGCCAGGCAGTGGCCAGATTCAGTCAGAGTATTC
CCTTCAACTGCTCAGCAAATGGAACCTTCAGCAATCGCCAGTTTACCAGCAGACTTCTCATATGATGA
GTGCATTGTCTACCAATGAGGATATGCAAATGCAGTGTGAATTGTTTTCTTCTCCTCCTGCAGTTTCTGG
AAATGAACTTCTACAACCTACCACACAGCAGGTTGCAACCCCTGGCACTACCATGTTTCAGACATCAAGT
TCAGGAGATGGAGAAGAACTGGAACACAAGCAAAACAGATTCAGAACAGTGTCTTTCAGACCATGGTCC
AAATGCAACATAGTGGGGACAATCAACCTCAAGTTAACCTTTTTTCATCCAAAAAGTATGATGAGTGT
TCAGAATAGTGGTACCAACAACAAGGTAATGGTTTATTCAGCAAGGGAATGAGATGATGTCACCTTCAA
TCTGGAATTTTTTGAGCAGTCTTCTCATTACAGGCCCAACTTTTTTCATCCTCAAATCCTATTGCCG
ATGCTCAGAACCTTCCAGGAACTCAAGGTTCTCTCTTTCATAGTCCAATCCTATTGTCACAGTCA
GACTTCTACAACCTCTCTGAACAAATGCAGCCTCCAATGTTTCACTCTCAAAGTACCATTGCTGTGTTA
CAGGGCTCTTCAGTTCTCAAGACCAGCAGTCAACCAACATATTTCTTCCAGAGTCCCATGAATAATC
TTCAGACTAACACAGTAGCCCAAGAAGCATTTTTTGCAGCACCGAACTCAATTTCTCCACTTCAGTCAAC
ATCAAACAGTGAACAACAAGCTGCTTTC AACAGCAAGCTCCAATATCACACATCCAGACTCCTATGCTT
TCCCAAGAACAGGCACAACCCCGCAGCAGGGTTTATTTAGCCTCAGGTGGCCCTGGGCTCCCTCCAC
CTAATCCAATGCCTCAAAGCCAACAAGGAACCATGTTCCAGTCACAGCACTCAATAGTTGCCATGCAGAG
TAACTCTCCATCCAGGAACAGCAGCAGCAGCAACAGCAGCAGCAACAGCAGCAGCAACAACAACAG
AGCATTTTATTCAGTAATCAGAATACCATGGCTACAATGGCGTCTCAAAGCAACCACCACAAACATGA
TATTCAACCCAAATCAAATCCAATGGCTAATCAGGAGCAACAGAACCAGTCAATTTTTCCAAACAAG
TAACATGGCCCAATGAATCAAGAGCAACAGCCATGCAATTTTCAGAGTCAGTCCACAGTTTCTCACTT
CAGAACCAGGTCTACCCAGTCGGAATCATCACAGACCCCTGTTCCATAGCTCTCCTCAGATTCAGT
TGGTACAAGGGTCACCTAGTTCTCAAGAGCAGCAAGTAACTCTCTTATCTCCAGCATCCATGTCTGC
CTTGCAGACCAGTATAAATCAACAAGATATGCAACAGTCTCCTCTTATTTCCCTCAGAACAATGCCT
GGAATTC AAGGAGCCACATCTTCGCCTCAACCACAGGCTACTTTATTTACAACACAGCAGGAGGCACAA
TGAACCAACTGCAGAATTCTCCTGGCTCATCTCAGCAGACATCAGGAATGTTCTTATTTGGCATTCAAAA
TAACTGTAGTCAGCTTTTAACTCTGGACCAGCTACATTGCCTGATCAGTTGATGGCCATAAGTCAGCCA
GGCCAACCACAAAACGAGGGCCAGCCACCTGTGACAACACTTCTTCTCAGCAAATGCCAGAGAATTCTC
CACTGGCATCCTCTATAAACACCAACCAGAACATCGAAAAGATTGATTTGCTTGTTCATTGCAAAACCA
AGGGAACAACCTGACTGGCTCCTTT

ACGCGTACGCGGCCGCTCGAGCAGAACTCATCTCAGAAGAGGATCTGGCAGCAAATGATATCCTGGATT
ACAAGGATGACGACGATAAGGTTTAA

Protein Sequence: >RC235309 representing NM_173215
 Red=Cloning site Green=Tags(s)

MGGACSSFTTSSSPTIYSTSVTDSKAMQVESCSSAVGVSNRQVSEKQLTSNTVQQHPSTPKRHTVLYISP
 PPEDLLDNSRMSQCDEGCLESEQSCSMWEDSPSNFSNMSTSSYNDNTEVPRKSRKRNPQKRPQVVKRRD
 CEESNMDIFDADSAKAPHYVLSQLTTDNKGNKAGNGTLENQKGTGVKKSPLMCGQYQYVSEKELKIVV
 QPETQHRARYL TEGRSRSYKDRTPQGFPTVKLEGNHNPVVLQVFGNDSDGRVKPHGFYQACRVTGRNTP
 CKEVDI EGTTVIEGLDPSNNMTLAVDCVGILKLRNADVEARIGIAGSKKSTRARLVFRVNI MRKD GST
 LTLQTPSSPILCTQAPAGVPEILKLSLHSCSVKGEVFEVFLIGKNFLKGTKVFQENVS DENSWKSEAEIDM
 ELFHQNHLIVKVPPYHDQHITLPVSVGIYVVTNAGRSHDVQPFTYTPDPAAGALNVNKKKEISSPARPC
 SFEEAMKAMKTTGCNLDKVNIIPNALMTPLI P SSMIKSEDVTPMEVTAEKRSSTIFKTKTSVGSTQQTLE
 NISNIAGNGSFSSPSSSHLPSENEKQQQIQPKAYNPETL TTIQTQDISQPGTFPAVSASSQLPNSDALLQ
 QATQFQTRRETQSRILQSDGTVVNLSQLTEASQQQQQSPLQEQAQTLQQQISSNIFSPNSVSQLQNTIQ
 QLQAGSF TGSTASGSSGSVDLVQQVLEAQQQLSSVLF SAPDGNENVQEQ LSADIFQQVSIQSGVSPGMF
 SSTEPTVHTRPDNLLPGRAESVHPQSENTLSNQQQQQQQQVMESAAAMVMMQQSICQAAAIQISELF
 PSTASANGNLQQSPVYQQTSHMSALSTNEDMQQCELFSSPPAVSGNETSTTTTQQVATPGTTFMQTSS
 SGGDEETGTQAKQIQNSVFQTMVQM QHSGDNQP VNLFSSTKSMSVQNSGTQQQGNGLFQQGNEMMSLQ
 SGNFLQQSSHSQAQLFHPQNP IADANLSQETQGS LFHSPNPIVHSQSTTSSSEMQPPMFHSQSTIAVL
 QGSSVPQDQQSTNIFLSQSPMNNLQTNTVAQEAFFAAPNSISPLQSTSNSEQQAAAFQQQAPISHIQTPML
 SQEQAPPPQQGLFQPVVALGSLPPNPMPQSQQGT MFQSQHSIVAMQSNPSQEQQQQQQQQQQQQQQQ
 SILFSNQNTMATMASPKOPPPNMFNPNQNPMANQEQQNQSIFHQSNMAMPNQEQQPMQFSQSTVSSL
 QNPQGP TQSESSQTPLFHSSPQIQLVQGPS S SQEQQVTFL SPASMSALQTSINQQDMQSQSPLYSPQNMP
 GIQGATSSPQPQATL FHNTAGGT MNQL QNSPSSQQTSGMFL FGI QNNCSQLL TSGPATLPDQLMAISQP
 GQPQNEGQPPVTLLSQQMPENSPLASSINTNQNI EKIDLLVSLQNQGNL TGSF

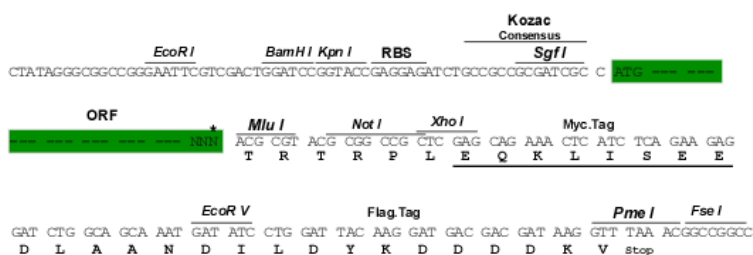
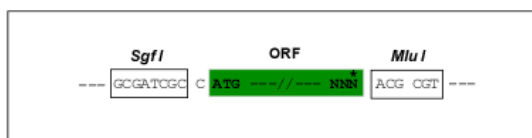
TRTRPLE~~QKLISEEDLAANDILDYKDDDDKV~~

Restriction Sites:

Sgfl-MluI

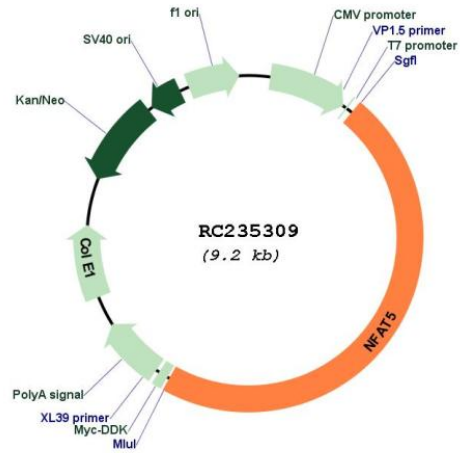
Cloning Scheme:

Cloning sites used for ORF Shuttling:



* The last codon before the Stop codon of the ORF

Plasmid Map:



ACCN: NM_173215

ORF Size: 4365 bp

OTI Disclaimer: The molecular sequence of this clone aligns with the gene accession number as a point of reference only. However, individual transcript sequences of the same gene can differ through naturally occurring variations (e.g. polymorphisms), each with its own valid existence. This clone is substantially in agreement with the reference, but a complete review of all prevailing variants is recommended prior to use. [More info](#)

OTI Annotation: This clone was engineered to express the complete ORF with an expression tag. Expression varies depending on the nature of the gene.

Components: The ORF clone is ion-exchange column purified and shipped in a 2D barcoded Matrix tube containing 10ug of transfection-ready, dried plasmid DNA (reconstitute with 100 ul of water).

Reconstitution Method:	<ol style="list-style-type: none">1. Centrifuge at 5,000xg for 5min.2. Carefully open the tube and add 100ul of sterile water to dissolve the DNA.3. Close the tube and incubate for 10 minutes at room temperature.4. Briefly vortex the tube and then do a quick spin (less than 5000xg) to concentrate the liquid at the bottom.5. Store the suspended plasmid at -20°C. The DNA is stable for at least one year from date of shipping when stored at -20°C.
RefSeq:	<u>NM_173215.3</u>
RefSeq Size:	5311 bp
RefSeq ORF:	4368 bp
Locus ID:	10725
UniProt ID:	<u>O94916</u>
Cytogenetics:	16q22.1
Protein Families:	Druggable Genome, Transcription Factors
Protein Pathways:	Axon guidance, B cell receptor signaling pathway, Natural killer cell mediated cytotoxicity, T cell receptor signaling pathway, VEGF signaling pathway, Wnt signaling pathway
MW:	158.4 kDa
Gene Summary:	The product of this gene is a member of the nuclear factors of activated T cells family of transcription factors. Proteins belonging to this family play a central role in inducible gene transcription during the immune response. This protein regulates gene expression induced by osmotic stress in mammalian cells. Unlike monomeric members of this protein family, this protein exists as a homodimer and forms stable dimers with DNA elements. Multiple transcript variants encoding different isoforms have been found for this gene. [provided by RefSeq, Jul 2008]