

## Product datasheet for RC235307

### PTPRZ1 (NM\_001206838) Human Tagged ORF Clone

#### Product data:

Product Type:	Expression Plasmids
Product Name:	PTPRZ1 (NM_001206838) Human Tagged ORF Clone
Tag:	Myc-DDK
Symbol:	PTPRZ1
Synonyms:	HPTPZ; HPTPzeta; phosphacan; PTP-ZETA; PTP18; PTPRZ; PTPZ; R-PTP-zeta-2; RPTPB; RPTPbeta
Vector:	pCMV6-Entry (PS100001)
E. coli Selection:	Kanamycin (25 ug/mL)
Cell Selection:	Neomycin
ORF Nucleotide Sequence:	>RC235307 representing NM_001206838 Red=Cloning site Blue=ORF Green=Tags(s)

TTTTGTAATACGACTCACTATAGGGCGCCGGAATTCGTCGACTGGATCCGGTACCGAGGAGATCTGCC  
GCCGCGATCGCC

ATGCGAATCCTAAAGCGTTTCCTCGCTTGCACTCCTCTGTGTTTGCCGCTGGATTGGGCTAATG  
GATACTACAGACAACAGAGAAAACCTTGTGAAGAGATTGGCTGGTCTATACAGGAGCACTGAATCAAAA  
AAATTGGGAAAGAAATATCCAACATGTAATAGCCAAAACAATCTCCTATCAATATTGATGAAGATCTT  
ACACAAGTAAATGTGAATCTTAAGAAAACCTAAATTTTCAGGGTTGGGATAAAACATCATTGAAAAACAT  
TCATTCATAACACTGGGAAAACAGTGGAAATTAATCTCACTAATGACTACCGTGTGAGCGGAGGAGTTTC  
AGAAATGGTGTAAAGCAAGCAAGATAACTTTTCACTGGGAAAATGCAATATGTCATCTGATGGATCA  
GAGCATAGTTTAGAAGGACAAAAATTTCCACTTGAGATGCAAACTACTGCTTTGATGCGGACCGATTTT  
CAAGTTTTGAGGAAGCAGTCAAAGGAAAAGGGAAGTTAAGAGCTTTATCCATTTTGTGAGGTTGGGAC  
AGAAGAAAATTTGGATTTCAAAGCGATTATTGATGGAGTCGAAAGTGTAGTCGTTTTGGGAAGCAGGCT  
GCTTTAGATCCATTCACTGTTGAACCTCTGCCAACTCAACTGACAAGTATTACATTTACAATGGCT  
CATTGACATCTCCTCCCTGCACAGACAGTTGACTGGATTGTTTTAAAGATAACAGTTAGCATCTGTA  
AAGCCAGTTGGCTGTTTTTTGTGAAGTTCTACAATGCAACAATCTGGTTATGTCATGCTGATGGACTAC  
TTACAAAACAATTTTCGAGAGCAACAGTACAAGTTCTCTAGACAGGTGTTTTCTCATACACTGGAAGG  
AAGAGATTCATGAAGCAGTTTGTAGTTCAGAACCAGAAAATGTTCAAGGCTGACCCAGAGAATTATACCAG  
CCTTCTTGTTACATGGGAAAGACCTCGAGTCGTTTATGATACCATGATTGAGAAGTTTGCAGTTTGTAC  
CAGCAGTTGGATGGAGAGGACCAACCAAGCATGAATTTTTGACAGATGGCTATCAAGACTTGGGTGCTA  
TTCTCAATAATTTGCTACCCAATATGAGTTATGTTCTTCAGATAGTCCATATGCACTAATGGCTTATA  
TGAAAAATACAGCGACCAACTGATTGTCGACATGCCTACTGATAATCCTGAACCTGATCTTTCCCTGAA  
TTAATTGGAAGTGAAGAAATAATCAAGGAGGAGGAAGAGGAAAAGACATTGAAGAAGGCGCTATTGTGA  
ATCCTGGTAGAGACAGTCTACAACCAATCAGGAAAAAGGAACCCAGATTTCTACCACAACACACTA  
CAATCGCATAGGGACGAAATACAATGAAGCCAAGACTAACCGATCCCCAACAAAGAGGAAGTGAAATCTCT  
GGAAGGGTGATGTTCCAATACATCTTTAAATCCACTTCCAACCAAGTCACTAAATTAGCCACAGAAA



[View online »](#)

AAGATATTTCTTGACTTCTCAGACTGTGACTGAACTGCCACCTCACACTGTGGAAGTACTTCAGCCTC  
TTTAAATGATGGCTCTAAAAGTGTCTTAGATCTCCACATATGAACTTGTGCGGGACTGCAGAATCCTTA  
AATACAGTTTCTATAACAGAATATGAGGAGGAGAGTTTATTGACCAGTTTCAAGCTTGATACTGGAGCTG  
AAGATTCTTCAGGCTCCAGTCCCACAATTCTGCTATCCCATTCTCTGAGAACATATCCCAAGGTA  
TATATTTCTCCGAAAACCCAGAGACAATAACATATGATGTCCTTATACCAGAACTGCTAGAAATGCT  
TCCGAAGATTCACTTTCATCAGTTTCAAGAATCACTAAAGGATCCTTCTATGGAGGAAATGTGTGGT  
TTCTAGTCTACAGACATAACAGCACAGCCCGATGTTGGATCAGGCAGAGAGAGCTTTCTCCAGACTAA  
TTACACTGAGATACGTGTTGATGAATCTGAGAAGACAACCAAGTCTTTTCTGCAGGCCAGTGATGTCA  
CAGGGTCCCTCAGTTACAGATCTGGAAATGCCACATTATTCTACCTTTGCCTACTTCCCAACTGAGGTAA  
CACCTCATGCTTTTACCCCATCTCCAGACAACAGGATTTGGTCTCCACGGTCAACGTGGTATACTCGCA  
GACAACCAACCGGTATACAATGAGGCCAGTAATAGTAGCCATGAGTCTCGTATTGGTCTAGCTGAGGGG  
TTGGAATCCGAGAAGAAGGCAGTTATACCCCTTGATCGTGTGACGCCCTGACTTTTATCTGTCTAGTGG  
TTCTTGTTGGTATTCTCATCTACTGGAGGAAATGCTTCCAGACTGCACACTTTTACTTAGAGGACAGTAC  
ATCCCCTAGAGTTATATCCACACCTCCAACACCTATCTTCCAATTTAGATGATGTCGGAGCAATTCCA  
ATAAAGCACTTTCCAAAGCATGTTGCAGATTTACATGCAAGTAGTGGGTTTACTGAAGAATTTGAGACAC  
TGAAAGAGTTTTACCAGGAAGTGCAGAGCTGTACTGTTGACTTAGGTATTACAGCAGACAGCTCCAACCA  
CCCAGACAACAAGCACAAGAATCGATACATAAATATCGTTGCCTATGATCATAGCAGGGTTAAGCTAGCA  
CAGCTTGCTGAAAAGGATGGCAAAGTACTGATTATCAATGCCAATTTGTTGATGGCTACAACAGAC  
CAAAAGCTTATATTGCTGCCAAGGCCACTGAAATCCACAGCTGAAGATTTCTGGAGAATGATATGGGA  
ACATAATGTGGAAGTTATTGTCATGATAACAAACCTCGTGGAGAAAGGAAGGAGAAAAATGTGATCAGTAC  
TGGCCTGCCGATGGGAGTGAGGAGTACGGGAACTTCTGGTCACTCAGAAGAGTGTGCAAGTGTCTGGCT  
ATTATACTGTGAGGAATTTACTCTAAGAAACACAAAAATAAAAAAGGGCTCCAGAAAGGAAGACCCAG  
TGGACGTGTGGTCACACAGTATCACTACCGCAGTGGCCTGACATGGGAGTACCAGAGTACTCCCTGCCA  
GTGCTGACCTTTGTGAGAAAGGCAGCCTATGCCAAGCGCCATGCAGTGGGGCCTGTTGCTGCCACTGCA  
GTGCTGGAGTTGGAAGAACAGGCACATATATTGTGCTAGACAGTATGTTGCAGCAGATTCAACACGAAGG  
AACTGTCAACATATTTGGCTTCTTAAAACACATCCGTTCAAAAAGAAATTTTGGTACAAAAGTGGAGG  
CAATATGTCTTTCATTGATACACTGGTTGAGGCCATACTTAGTAAAGAAAGTGGTGTGGACAGTCA  
ATATTCATGCCTATGTTAATGCACTCCTCATTCTGGACCAGCAGGCAAAAACAAGCTAGAGAAACAATT  
CCAGCTCTGAGCCAGTCAAATATACAGCAGAGTACTATTCTGCAGCCCTAAAGCAATGCAACAGGGAA  
AAGAATCGAACTCTTCTATCATCCCTGTGAAAGATCAAGGGTTGGCATTTCATCCCTGAGTGGAGAAG  
GCACAGACTACATCAATGCCTCCTATATCATGGGCTATTACCAGAGCAATGAATTCATCATTACCCAGCA  
CCCTCTCCTTATACCATCAAGGATTTCTGGAGGATGATATGGGACCATAATGCCCAACTGGTGGTTATG  
ATTCCTGATGGCCAAAACATGGCAGAAGATGAATTTGTTTACTGGCCAAATAAAGATGAGCCTATAAATT  
GTGAGAGCTTTAAGGTCACTCTTATGGCTGAAGAACACAAATGTCTATCTAATGAGGAAAAAATTATAAT  
TCAGGACTTTATCTTAGAAGCTACACAGGATGATTATGTAAGTGAAGTGGGACTTTTCAAGTGTCTAAA  
TGGCCAAATCCAGATAGCCCCATTAGTAAAACCTTTGAACTTATAAGTGTATAAAGAAGAAGCTGCCA  
ATAGGGATGGGCCTATGATTGTTGATGATGAGCATGGAGGAGTACGGCAGGAACCTTTCTGTGCTGAC  
AACCTTATGCACCAACTAGAAAAAGAAAATCCGTGGATGTTTACCAGGTAGCCAAGATGATCAATCTG  
ATGAGGCCAGGAGTCTTTGCTGACATTGAGCAGTATCAGTTTCTCTACAAAGTATCCTCAGCCTGTGA  
GCACAAGGCAGGAAGAGAATCCATCCACCTCTCTGGACAGTAATGGTGCAGCATTGCCTGATGAAAATAT  
AGCTGAGAGCTTAGAGTCTTTAGTT

ACGCGTACGCGGCCGCTCGAGCAGAACTCATCTCAGAAGAGGATCTGGCAGCAATGATATCCTGGATT  
ACAAGGATGACGACGATAAGGTTTAA

**Protein Sequence:** >RC235307 representing NM\_001206838  
 Red=Cloning site Green=Tags(s)

MRILKRFLACIQLLCVCRLDWANGYYRQQRKLVVEIGWSYTGALNQNKGKKYPTCNSPKQSPINIDEDL  
 TQVNVNLKLLKFQGWKTSLENTFIHNTGKTVEINLTNDYRVSSGGVSEMVFKASKITFFHWGKCNMSSDGS  
 EHSLEGQKFPLEMQIYCFDADRFSSEFEEAVKGGKLRALSILFEVGTENLDFKAIIDGVEVSRSFGKQA  
 ALDPFILLNLLPNSTDKYYIYNGSLTSPCTDTVDWIVFKDTSISESQLAVFCEVLTMQQSGYVMLMDY  
 LQNNFREQQYKFSRQVFSYTGKEEIEHAVCSSEPENVQADPENYTSLLVTWERPRVYDTMIEKFAVLY  
 QQLDGEDQTKHEFLTLDGYQDLGAILNLLPNMSYVLQIVAICTNGLYGYSDQLIVDMPDTPNPELDLFE  
 LIGTEEIIKEEEEGKDIEEGAIVNPRDSATNQIRKKEPQISTTTTHYNRIGTKYNEAKTNRSPTRGSEFS  
 GKGDVPNTSLNSTSQPVTKLATEKDISLTSQVTTELPPHTVEGTSASLNDGSKTVLRSPHMNLSGTAESL  
 NTVSITEYEEESLLTSFKLDTGAEDSSGSSPATS AIPFISENISQGYIFSENPETITYDVLIPESARNA  
 SEDSTSSGSEESLKDPSMEGNVWFPSSDIT AQP DVGSGRESFLQNTYTEIRVDESEKTTKFS SAGPVMS  
 QGFSVTDLEMPHYSTFAFPTEVTPHAFTPSSRQQDLVSTVNVVYSQTTQPVYNEASNSSHESRIGLAEG  
 LESEKKAVIPLVIYSALTFICLVVLVGLIYWRKCFQTAHFYLEDSTSPRVI STPPTPIFPI SDDVGAIP  
 IKHFPHVADLHASSGFTTEFETLKEFYQEVQSCTVDLGITADSSNHPDNKHKNRYINIVAYDHSRVKLA  
 QLAEKDGKLDYINANYVDGYNRPKAYIAAQGPLKSTAEDFWRMIWEHNVEIVMITNLVEKGRRKCDQY  
 WPADGSEEYGNFLVTQKSVQVLAAYTVRNFTLRNTKIKKGSQKGRPSGRVVTQYHYTQWPDMGVPEYSLP  
 VLVFVRKAAYAKRHAVGPVVVHCSAGVGRGTGYIVLDSMLQQIQHEGTVNIFFGLKHIRSQRNLYVQTEE  
 QYVFIHDTLVEAILSKETEVLDSHIHAYVNALLIPGPAGTKLEKQFQLLSQSNIQQSDYSAALKQCNRE  
 KNRTSSIIIPVERSRVGISSLSEGTDYINASYIMGYYSNEFIIITQHPLLHTIKDFWRMIWDHNAQLVVM  
 IPDQGNMAEDEFVYWPKNKDEPINCESFKVTLMAEEHKCLSNEEKLI IQDFILEATQDDYVLEVRHFQCPK  
 WPNPDSPI SKTFELISVIKEEAANRDGPMIVHDEHGGVTAGTFCALTTLMHQLEKENSVDVYQVAKMINL  
 MRPGVFADIEQYQFLYKVI LSLVSTRQEE NPSTSLDSNGAALPDGNIAESLES LV

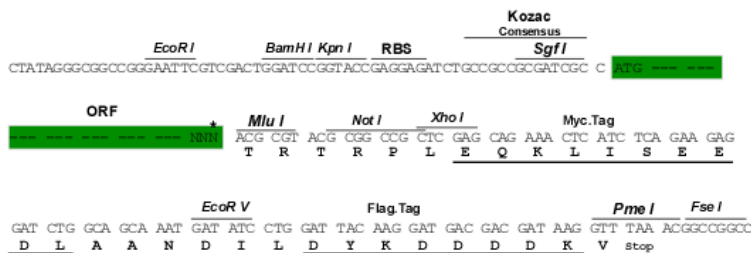
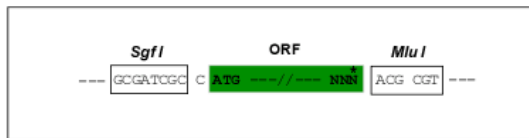
TRTRPLEQKLISEEDLAANDILDYKDDDDKV

**Restriction Sites:**

Sgfl-MluI

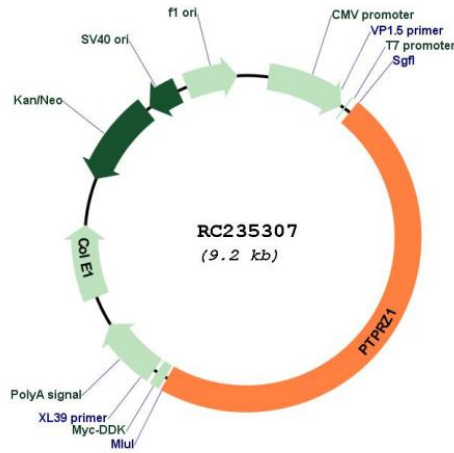
**Cloning Scheme:**

Cloning sites used for ORF Shutting:



\* The last codon before the Stop codon of the ORF

## Plasmid Map:



ACCN: NM\_001206838

ORF Size: 4365 bp

OTI Disclaimer: The molecular sequence of this clone aligns with the gene accession number as a point of reference only. However, individual transcript sequences of the same gene can differ through naturally occurring variations (e.g. polymorphisms), each with its own valid existence. This clone is substantially in agreement with the reference, but a complete review of all prevailing variants is recommended prior to use. [More info](#)

OTI Annotation: This clone was engineered to express the complete ORF with an expression tag. Expression varies depending on the nature of the gene.

Components: The ORF clone is ion-exchange column purified and shipped in a 2D barcoded Matrix tube containing 10ug of transfection-ready, dried plasmid DNA (reconstitute with 100 ul of water).

<b>Reconstitution Method:</b>	<ol style="list-style-type: none"><li>1. Centrifuge at 5,000xg for 5min.</li><li>2. Carefully open the tube and add 100ul of sterile water to dissolve the DNA.</li><li>3. Close the tube and incubate for 10 minutes at room temperature.</li><li>4. Briefly vortex the tube and then do a quick spin (less than 5000xg) to concentrate the liquid at the bottom.</li><li>5. Store the suspended plasmid at -20°C. The DNA is stable for at least one year from date of shipping when stored at -20°C.</li></ol>
<b>RefSeq:</b>	<a href="#">NM_001206838.2</a>
<b>RefSeq Size:</b>	5589 bp
<b>RefSeq ORF:</b>	4368 bp
<b>Locus ID:</b>	5803
<b>UniProt ID:</b>	<a href="#">P23471</a>
<b>Cytogenetics:</b>	7q31.32
<b>Protein Families:</b>	Druggable Genome, Phosphatase, Transmembrane
<b>Protein Pathways:</b>	Epithelial cell signaling in Helicobacter pylori infection
<b>MW:</b>	164 kDa
<b>Gene Summary:</b>	This gene encodes a member of the receptor protein tyrosine phosphatase family. Expression of this gene is restricted to the central nervous system (CNS), and it may be involved in the regulation of specific developmental processes in the CNS. Alternatively spliced transcript variants encoding different isoforms have been described for this gene. [provided by RefSeq, May 2011]