

Product datasheet for RC235304

PTPRZ1 (NM_001206839) Human Tagged ORF Clone

Product data:

Product Type:	Expression Plasmids
Product Name:	PTPRZ1 (NM_001206839) Human Tagged ORF Clone
Tag:	Myc-DDK
Symbol:	PTPRZ1
Synonyms:	HPTPZ; HPTPzeta; phosphacan; PTP-ZETA; PTP18; PTPRZ; PTPZ; R-PTP-zeta-2; RPTPB; RPTPbeta
Vector:	pCMV6-Entry (PS100001)
E. coli Selection:	Kanamycin (25 ug/mL)
Cell Selection:	Neomycin
ORF Nucleotide Sequence:	>RC235304 representing NM_001206839 Red=Cloning site Blue=ORF Green=Tags(s)

TTTTGTAATACGACTCACTATAGGGCGCCGGAATTCGTCGACTGGATCCGGTACCGAGGAGATCTGCC
GCC**CGATCGCC**

ATGCGAATCCTAAAGCGTTTCCTCGCTTGCACTCCTCTGTGTTTGCCGCCTGGATTGGGCTAATG
GATACTACAGACAACAGAGAAAACCTTGTGAAGAGATTGGCTGGTCTATACAGGAGCACTGAATCAAAA
AAATTGGGAAAGAAATATCCAACATGTAATAGCCAAAACAATCTCCTATCAATATTGATGAAGATCTT
ACACAAGTAAATGTGAATCTTAAGAAACTTAAATTTTCAGGGTTGGGATAAAACATCATTGAAAAACAT
TCATTCATAACACTGGGAAAACAGTGGAAATTAATCTCACTAATGACTACCGTGTGAGCGGAGGAGTTTC
AGAAATGGTGTAAAGCAAGCAAGATAACTTTTCACTGGGAAAATGCAATATGTCATCTGATGGATCA
GAGCATAGTTTAGAAGGACAAAAATTTCCACTTGAGATGCAAACTACTGCTTTGATGCGGACCGATTTT
CAAGTTTTGAGGAAGCAGTCAAAGGAAAAGGGAAGTTAAGAGCTTTATCCATTTTGTGAGTTGGGAC
AGAAGAAAATTTGGATTTCAAAGCGATTATTGATGGAGTCGAAAGTGTAGTCGTTTTGGGAAGCAGGCT
GCTTTAGATCCATTCACTGTTGAACCTTCTGCCAACTCAACTGACAAGTATTACATTTACAATGGCT
CATTGACATCTCCTCCCTGCACAGACAGTTGACTGGATTGTTTTAAAGATAACAGTTAGCATCTGTA
AAGCCAGTTGGCTGTTTTTGTGAAGTTCTTACAATGCAACAATCTGGTTATGTCATGCTGATGGACTAC
TTACAAAACAATTTTCGAGAGCAACAGTACAAGTTCTCTAGACAGGTGTTTTCTCATACACTGGAAGG
AAGAGATTCATGAAGCAGTTTGTAGTTCAGAACCAGAAAATGTTCAAGGCTGACCCAGAGAATTATACCAG
CCTTCTTGTTACATGGGAAAGACCTCGAGTCGTTTATGATACCATGATTGAGAAGTTTGCAGTTTGTAC
CAGCAGTTGGATGGAGAGGACCAACCAAGCATGAATTTTACAGATGGCTATCAAGACTTGGGTGCTA
TTCTCAATAATTTGCTACCCAATATGAGTTATGTTCTTCCAGATAGTCCATATGCACTAATGGCTTATA
TGGAAAATACAGCGACCAACTGATTGTCGACATGCCTACTGATAATCCTGAACCTGATCTTTCCCTGAA
TTAATTGGAAGTGAAGAAATAATCAAGGAGGAGGAAGAGGAAAAGACATTGAAGAAGGCGCTATTGTGA
ATCCTGGTAGAGACAGTCTACAACCAATCAGGAAAAAGGAACCCAGATTTCTACCACAACACACTA
CAATCGCATAGGGACGAAATACAATGAAGCCAAGACTAACCAGATCCCAACAAGAGGAAGTGAAATCTCT
GGAAGGGTGATGTTCCAATACATCTTAAATCCACTTCCAACCAAGTCACTAAATTAGCCACAGAAA



View online »

AAGATATTTCTTGACTTCTCAGACTGTGACTGAACTGCCACCTCACACTGTGGAAGTACTTCAGCCTC
TTTAAATGATGGCTCTAAAAGTGTCTTAGATCTCCACATATGAACTTGTGCGGGACTGCAGAATCCTTA
AATACAGTTTCTATAACAGAATATGAGGAGGAGAGTTTATTGACCAGTTTCAAGCTTGATACTGGAGCTG
AAGATTCTTCAGGCTCCAGTCCCACAATTCTGCTATCCCATTCTCTGAGAACATATCCCAAGGTA
TATATTTCTCCGAAAACCCAGAGACAATAACATATGATGTCTTATACCAGAACTCTGCTAGAAATGCT
TCCGAAGATTCACTTTCATCAGTTTCTGAGAAATCACTAAAGGATCCTTCTATGGAGGAAATGTGTGGT
TTCCCTAGCTCTACAGACATAACAGCACAGCCGATGTTGGATCAGGCAGAGAGAGCTTTCCAGACTAA
TTACACTGAGATACGTGTTGATGAATCTGAGAAGACAACCAAGTCTTTTCTGCAGGCCAGTGATGTCA
CAGGGTCCCTCAGTTACAGATCTGGAAATGCCACATTATTCTACCTTTGCCTACTTCCCAACTGAGGTAA
CACCTCATGCTTTTACCCATCTCCAGACAACAGGATTTGGTCTCCACGGTCAACGTGGTATACTCGCA
GACAACCAACCGGTATACAATGAGGCCAGTAATAGTAGCCATGAGTCTCGTATTGGTCTAGCTGAGGGG
TTGGAATCCGAGAAGAAGGCAGTTATACCCCTGTGATCGTGTGACGCCCTGACTTTTATCTGTCTAGTGG
TTCTTGTGGGTATTCTCATCTACTGGAGGAAATGCTTCCAGACTGCACACTTTTACTTAGAGGACAGTAC
ATCCCCTAGAGTTATATCCACACCTCCAACACCTATCTTCCAATTTAGATGATGTCGGAGCAATTCCA
ATAAAGCACTTTCCAAAGCATGTTGCAGATTTACATGCAAGTAGTGGGTTTACTGAAGAATTTGAGGAAG
TGCAAGCTGACTGTTGACTTAGGTATTACAGCAGACAGCTCCAACCACCCAGACAACAAGCACAAAGAA
TCGATACATAAATATCGTTGCCTATGATCATAGCAGGGTTAAGCTAGCACAGCTTGTGAAAAGGATGGC
AACTGACTGATTATCAATGCCAATTATGTTGATGGCTACAACAGACCAAAAGCTTATATTGCTGCC
AAGGCCACTGAAATCCACAGCTGAAGATTTCTGGAGAATGATATGGGAACATAATGTGGAAGTTATTGT
CATGATAACAAACCTCGTGGAGAAAGGAAGGAGAAAATGTGATCAGTACTGGCCTGCCGATGGGAGTGAG
GAGTACGGGAACCTTCTGGTCACTCAGAAGAGTGTGCAAGTGTGCTTGCCTATTACTGTGAGGAATTTTA
CTCTAAGAAACACAAAAATAAAAAAGGGCTCCCAGAAAGGAAGACCCAGTGGACGTGTGGTACACAGTA
TCACTACACGCACTGGCCTGACATGGGAGTACCAGACTCTCCAGTGGCCTTGTGAGGAAATTTGAGAAAG
GCAGCCTATGCCAAGCGCATGCAGTGGGCCTGTTGTCGTCCACTGCAGTGTGGAGTTGGAAGAACAG
GCACATATATTGTGCTAGACAGTATGTTGCAGCAGATTCAACACGAAGGAAGTCAACATATTTGGCTT
CTTAAACACATCCGTTCAAAAGAAATTTTGGTACAACTGAGGAGCAATATGTCTTTCATTCATGAT
ACACTGGTTGAGGCCATACTTAGTAAAGAACTGAGGTGCTGGACAGTCAATTCATGCCTATGTTAATG
CACTCCTCATTCTGGACCAGCAGGCAAAACAAAGCTAGAGAAACAATCCAGCTCCTGAGCCAGTCAAA
TATACAGCAGAGTACTATTCTGCAGCCCTAAAGCAATGCAACAGGAAAAGAATCGAATCTTCTATC
ATCCCTGTGAAAAGATCAAGGGTTGGCATTTCATCCCTGAGTGGAGAAGGCACAGACTACATCAATGCCT
CCTATATCATGGGCTATTACCAGAGCAATGAATTCATCATTACCCAGCACCTCTCCTTCATACCATCAA
GGATTTCTGGAGGATGATATGGGACCATAATGCCCAACTGGTGGTTATGATTCTGATGGCCAAAACATG
GCAGAAGATGAATTTGTTTACTGGCCAAATAAAGATGAGCCTATAAATTGTGAGAGCTTTAAGGTCACTC
TTATGGCTGAAGAACACAAATGTCTATCTAATGAGGAAAACTTATAATTCAGGACTTTATCTTAGAAGC
TACACAGGATGATTATGTACTTGAAGTGAAGCACTTTTCAAGTGTCTAAATGGCCAAATCCAGATAGCCCC
ATTAGTAAAACCTTTGAACCTATAAGTGTATAAAGAAGAAGCTGCCAATAGGGATGGGCTATGATTG
TTCATGATGAGCATGGAGGAGTACGGCAGGAACCTTTCTGTGCTGACAACCTTATGCACCAACTAGA
AAAAGAAAATTCGTGGATGTTTACCAGGTAGCCAAGATGATCAATCTGATGAGGCCAGGAGTCTTTGCT
GACATTGAGCAGTATCAGTTTCTCTACAAGTATCCTCAGCCTTGTGAGCACAAGGCAGGAAGAGAATC
CATCCACCTCTCTGGACAGTAATGGTGCAGCATTGCCTGATGAAATATAGCTGAGAGCTTAGAGTCTTT
AGTT

ACGCGTACGCGGCCGCTCGAGCAGAACTCATCTCAGAAGAGGATCTGGCAGCAATGATATCCTGGATT
ACAAGGATGACGACGATAAGGTTTAA

Protein Sequence: >RC235304 representing NM_001206839
 Red=Cloning site Green=Tags(s)

MRILKRFLACIQLLCVCRLDWANGYYRQQRKLVVEEIGWSYTGALNQKNWGKKYPTCNSPKQSPINIDEDL
 TQVNVNLLKLFQGWDKTSLNTFIHNTGKTVEINLTNDYRVSGGVSEMVFKASKITFFHWGKCNMSSDGS
 EHSLEGQKFPLEMQIYCFDADRFSSFEAVKGGKLRALSILFEVGTENLDFKAIIDGVEVSFRFGKQA
 ALDPFILLNLLPNSTDKYYIYNGSLTSPPCDTVDWIVFKDTSISESQLAVFCEVLTMQQSGYVLMMDY
 LQNNFREQQYKFSRQVFSYTGKEEIEHAVCSSEPENVQADPENYSLLVTWERPRVVDYDMIEKFAVLY
 QQLDGEDQTKHEFLTDTGYQDLGAILNLLPNMSYVLQIVAICTNGLYGYKYSQDLIVDMPDTPNPELDLFE
 LIGTEEIIKEEEEKGDIEEAGIVNPRDSDATNQIRKKEPQISTTTTHYNRIGTKYNEAKTNRSPTRGSEFS
 GKGDVPNTSLNSTSQPVTKLATEKDLSLTQVTVELPPHTVEGTSASLNDGSKTVLRSPHMNLSGTAESL
 NTVSITEYEEESLLTSFKLDTGAEDSSGSSPATSAPFISENISQGYIFSSENPETITYDVLIPESARNA
 SEDSTSSGSEESLKDPSMEGNVWFPSSDITAQPDVVGSGRESFLQNTYTEIRVDESEKTTKFSAGPVMS
 QGPSVTDLEMPHYSTFAYFPTVPHAFTPSSRQQDLVSTVNVVYSQTTQPVYNEASNSSHESRIGLAEG
 LESEKKAVIPLVIVSALTFICLVVLVGLIYWRKCFQTAHFYLEDSTSPRVIISTPPTPIFPIISDDVGAIP
 IKHFPHKHAHLHASSGTFEEFEEVQSCTVDLGITADSSNHPDNKHKNRYINIVAYDHSRVKLAQLAEKDG
 KLTDYINANYVDGYNRPKAYIAAQGPLKSTAEDFWRMIWEHNVEIVMITNLVEKGRRKCDQYWPADGSE
 EYGNFLVTQKSVQVLAAYTVRNFTRLNRTIKKGSQKGRPSGRVVTQYHYTQWPDMGVPEYSLPVLTFVRK
 AAYAKRHAVGPPVVHCSAGVGRGTGYIVLDSMLQQIQHEGTVNIFGLKHRSQRNYLVQTEEQYVFIHD
 TLVEAILSKETEVLDSHIAHVNALLIPGPAKTKLEKQFQLLSQSNIQQSDYSAALKQCNREKNRTSSI
 IPVRSRVGISSLSGEGTDYINASYIMGYYSNEFIIITQHPLLHTIKDFWRMIWDHNAQLVVMIPDGQNM
 AEDEFVYWPNKDEPINCESFKVTLMAEEHKCLSNEEKLI IQDFILEATQDDYVLEVRHFQCPKWPNPDSP
 ISKTFELISVIKEEAANRDGPMIVHDEHGGVTAGTFICALTTLMHQLEKENSVDVYQYAKMINLMRPGVFA
 DIEQYQFLYKVLISLVSTRQEENPSTSLDSNGAALPDGNIAESLES LV

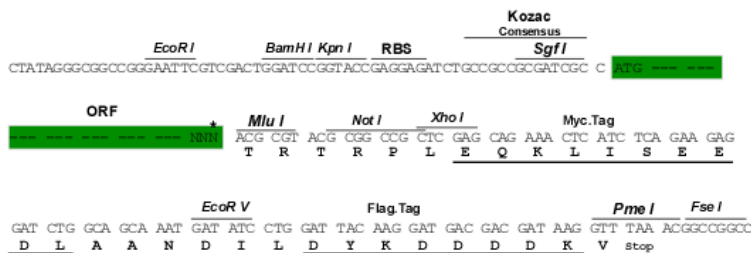
TRTRPLEQKLI SEEDLAANDILDYKDDDDKV

Restriction Sites:

Sgfi-MluI

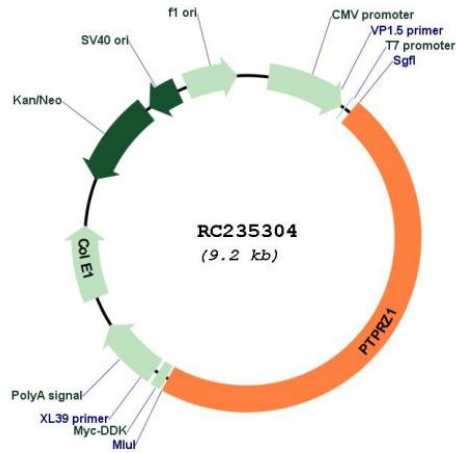
Cloning Scheme:

Cloning sites used for ORF Shutting:



* The last codon before the Stop codon of the ORF

Plasmid Map:



ACCN: NM_001206839

ORF Size: 4344 bp

OTI Disclaimer: The molecular sequence of this clone aligns with the gene accession number as a point of reference only. However, individual transcript sequences of the same gene can differ through naturally occurring variations (e.g. polymorphisms), each with its own valid existence. This clone is substantially in agreement with the reference, but a complete review of all prevailing variants is recommended prior to use. [More info](#)

OTI Annotation: This clone was engineered to express the complete ORF with an expression tag. Expression varies depending on the nature of the gene.

Components: The ORF clone is ion-exchange column purified and shipped in a 2D barcoded Matrix tube containing 10ug of transfection-ready, dried plasmid DNA (reconstitute with 100 ul of water).

Reconstitution Method:	<ol style="list-style-type: none">1. Centrifuge at 5,000xg for 5min.2. Carefully open the tube and add 100ul of sterile water to dissolve the DNA.3. Close the tube and incubate for 10 minutes at room temperature.4. Briefly vortex the tube and then do a quick spin (less than 5000xg) to concentrate the liquid at the bottom.5. Store the suspended plasmid at -20°C. The DNA is stable for at least one year from date of shipping when stored at -20°C.
RefSeq:	NM_001206839.2
RefSeq Size:	5568 bp
RefSeq ORF:	4347 bp
Locus ID:	5803
UniProt ID:	P23471
Cytogenetics:	7q31.32
Protein Families:	Druggable Genome, Phosphatase, Transmembrane
Protein Pathways:	Epithelial cell signaling in Helicobacter pylori infection
MW:	163.1 kDa
Gene Summary:	This gene encodes a member of the receptor protein tyrosine phosphatase family. Expression of this gene is restricted to the central nervous system (CNS), and it may be involved in the regulation of specific developmental processes in the CNS. Alternatively spliced transcript variants encoding different isoforms have been described for this gene. [provided by RefSeq, May 2011]