

## Product datasheet for RC235303

### UTY (NM\_001258249) Human Tagged ORF Clone

#### Product data:

Product Type:	Expression Plasmids
Product Name:	UTY (NM_001258249) Human Tagged ORF Clone
Tag:	Myc-DDK
Symbol:	UTY
Synonyms:	KDM6AL; KDM6C; UTY1
Vector:	pCMV6-Entry (PS100001)
E. coli Selection:	Kanamycin (25 ug/mL)
Cell Selection:	Neomycin
ORF Nucleotide Sequence:	>RC235303 representing NM_001258249 Red=Cloning site Blue=ORF Green=Tags(s)

TTTTGTAATACGACTCACTATAGGGCGCCGGAATTCGTCGACTGGATCCGGTACCGAGGAGATCTGCC  
GCC**GCGATCGCC**

ATGAAATCCTGCGCAGTGTGCTCACTACCGCCGCTGTTGCCTTCGGTGATGAGGCAAAGAAAATGGCGG  
AAGGAAAAGCGAGCCGCGAGAGTGAAGAGGAGTCTGTTAGCCTGACAGTCGAGGAAAGGGAGGCGCTTGG  
TGGCATGGACAGCCGTCTCTTCGGGTTCTGAGGCTTCATGAAGATGGCGCCAGAACGAAGACCCTACTA  
GGCAAGGCTGTTGCTGTACGAATCTTTAATCTTAAAAGCTGAAGGAAAAGTGGAGTCTGACTTCTTTT  
GCCAATTAGGTCACTTCAACCTCTTGTGGAAAGATTATCAAAAGCATTATCTGCATATCAGAGATTA  
CAGTTTACAGGCTGACTACTGGAAGAATGCTGCGTTTTATATGGCCTTGGTTTGGTCTACTTCTACTAC  
AATGCATTTCAATGGGCAATTAAGCATTTCAAGATGCCTTTATGTTGACCCAGCTTTTGTGCGAGCCA  
AGGAAATTCATTTACGACTTGGGCTCATGTTCAAAGTGAACACAGACTACAAGCTAGTTTAAAGCATTT  
TCAGTTAGCCTTGATTGACTGTAATCCATGTACTTTGTCCAATGCTGAAATTCATTTTCATATTGCCAT  
TTGTATGAAACCCAGAGGAAGTATCATTCTGCAAAGGAGGCATATGAACAACCTTTTGCAGACAGAAAAC  
TTCTGCACAAGTAAAAGCAACTGTATTGCAACAGTTAGTTGGATGCATCATAATATGGATCTAGTAGG  
AGACAAAGCCACAAAGGAAAGCTATGCTATTCAGTATCTCCAAAAGCTTTTGGAGGCAGATCCTAATTCT  
GGCCAATCGTGGTATTTTCTTGGAAAGTGTATTCAAGTATTGGGAAAAGTTCAGGATGCCTTTATATCTT  
ACAGGCAATCTATTGATAAATCAGAAGCAAGTGCAGATACATGGTGTTCATAGGTGTGTGTATCAGCA  
GCAAAATCAGCCTATGGATGCTTTACAGGCATATATTTGTGCTGTACAATTGGACCATGGGCATGCCGCA  
GCCTGGATGGACCTAGGTAATCTCTATGAATCCTGCAATCAACCTCAAGATGCCATTAATGCTACCTAA  
ATGCAGCTAGAAGCAAACGTTGTAGTAATACCTCTACGCTTGCTGCAAGAATTAATTTCTACAGGCTCA  
GTTGTGTAACCTCCACAAAGTAGTCTACAGAATAAACTAAATTAATTTCTTCTAGTATTGAGGAGGCATGG  
AGCCTACCAATCCCGCAGAGCTTACCTCCAGGAGGGTCCATGAACACAGCACAGCAGGCTTATAGAG  
CTCATGATCCAAATACTGAACATGTATTAACCCACAGTCAAACCAATTTTACGCAATCCTTGTCACT  
ACACATGATTACTTCTAGCCAAGTAGAAGGCTGTCCAGTCTGCCAAGAAGAAAAGAACATCTAGTCCA  
ACAAAGAATGGTTCTGATAACTGGAATGGTGGCCAGAGCTTTACATCATCCAGTACAGCAAGTTATT



[View online »](#)

CGTTGTGTTTGACACCACAGAAATTACAGCACTTGAACAACCTGCGAGCAAATAGAGATAATTTAAATCC  
AGCACAGAAGCATCAGCTGGAACAGTTAGAAAAGTCAGTTTGTCTTAATGCAGCAAATGAGACACAAAGAA  
GTTGCTCAGGTACGAACACTGGAATTCATAACGGGGCCATAACTGATTCATCACTGCCTACAAACTCTG  
TCTCTAATCGACAACCACATGGTGTCTGACCAGAGTATCTAGCGTCTCTCAGCCTGGAGTTCGCCCTGC  
TTGTGTTGAAAACTTTTGTCCAGTGGAGCTTTTTCTGCAAGCTGTATTCCTTGTGGCACATCAAAAT  
CTAGGAAGTACAGACACTATCTTGCTAGGCAGTAATTGTATAGCAGGAAGTAAAAGTAAATGAAAATGTGC  
TTACCTGCAGCAAAAATACACACACTCTACCTCATAATCATAACAGACCTGAACAGCAGCACAGAAGAGCC  
ATGGAGAAAACAGCTATCTAACTCCGCTCAGGGCTTCATAAAAAGTCAGAGTTTCAATGTTTGTGAGGACCT  
AATGAAGAACAACCTCTGTTTTCCACTGGTCCAGCCAGTATCACCAGGCAACTAGCACTGGTATTAAGA  
AGGCGAATGAACATCTCACTCTGCCTAGTAATTCAGTACCACAGGGGGATGCTGACAGTCACCTCTCCTG  
TCATACTGCTACCTCAGGTGGACAACAAGGCATTATGTTTACCAAAGAGAGCAAGCCTTCAAAAAATAGA  
TCCTTGGTGCCTGAAACAAGCAGGCATACTGGAGACACATCTAATGGCTGTGCTGATGTCAAGGGACTTT  
CTAATCATGTTTATCAGTTGATAGCAGATGCTGTTTCCAGTCTAACCATGGAGATTACCAAATTTATT  
AATTGCAGACAATCCTCAGCTCTCTGCTTTGTTGATTGAAAAAGCCAATGGCAATGTGGGTACTGGAACC  
TGTGACAAAGTGAATAATATCCAGCTGTTTACATAAAGACTGATCATTCTGTTGCCTTCCACCT  
CTTCAGCCATTTCCACAGCAACACCTTCTCCTAAATCCACTGAGCAGAGAAGCATAAACAGTGTACCAG  
CCTTAACAGTCTCACAGTGGATTACACACAGTCAATGGAGAGGGGCTGGGGAAGTCACAGAGCTCTACA  
AAAGTAGACCTGCCTTTAGCTAGCCACAGATCTACTTCTCAGATCTTACCATCAATGTCAGTGTCTATAT  
GCCCCAGTTCAACAGAAGTTCTGAAAGCATGCAGGAATCCAGGTAATAATGGCTTGTCTAATAGCTGCAT  
TTTGTAGATAAATGTCCACCTCCAAGACCACCAACTTACCATACCCACCCTTGCCAAAGGACAAGTTG  
AATCCACCACACCTAGTATTTACTTGGAAAATAAACGTGATGCTTTCTTCTCCATTACATCAATTTT  
GTACAAATCCAAAAACCTGTTACAGTAATACGTGGCCTTGTGGAGCTCTTAAATTAGATCTTGGACT  
TTTCTCTACAAAACTTTGGTAGAAGCTAACAAATGAACATATGGTAGAAGTGAAGCACAGTTGCTGCAA  
CCAGCAGATGAAAACTGGGATCCCACTGGAACAAGAAAATCTGGCGTTGTGAAAGCAATAGATCTCATA  
CTACAATTGCCAAATACGCACAATACCAGGCTTCTCCTTCCAGGAATCATTGAGAGAAGAAAATGAGAA  
AAGAACAACAACAAGATCATTAGATAACGAATCCACATCTTCCAGAGAATTCTGGAAGGAGAAGGAAA  
GGACCTTTTAAAACATAAAAATTTGGGACCAACATTGACCTCTCTGATAACAAAAAGTGAAGTTGCAGT  
TACATGAAGTACTAACTTCTGCTTTTGGCGGTGGTGTGAGCAGGAAATCTTCAACCATGTTGG  
GCATACCATTCTGGGCATGAATACAGTACAAGTATATGAAAGTCCAGGGAGTCGGACACCAGGTCAC  
CAAGAAAATAACAACCTTCTGCTCTGTTAACATAAATATTGGTCCAGGAGATTGTGAATGGTTTGTGTAC  
CTGAAGATTATTGGGGTGTCTGAATGACTTCTGTGAAAAAATAATTTGAATTTTTAATGAGTCTTG  
GTGGCCCAACCTTGAAGATCTTTATGAAGCAAATGTCCCTGTGTATAGATTTATTCAGCGACCTGGAGAT  
TTGGTCTGGATAAATGCAGGCACTGTGCATTGGGTTCAAGCTGTTGGCTGGTGAATAACATTGCCTGGA  
ATGTTGGTCCACTTACAGCCTGCCAGTATAAATTTGGCAGTGAACGGTATGAATGGAACAAATGAAAAG  
TGTGAAGTACCAGTACCATGGTGCATCTTCTGGAATATGGCACGAAATATCAAAGTCTCAGATCCA  
AAGCTTTTGAATGATTAAGTATTGTCTTTTGAATAATCTGAAGCAATATCAGACATTGAGAGAAGCTC  
TTGTTGCAGCAGGAAAAGAGTTATATGGCATGGGCGGACAAATGATGAACCAGCTCATTACTGTAGCAT  
TTGTGAGGTGGAGTTTTTAATCTGCTTTTGTCACTAATGAAAGCAATACTCAAAAAACCTACATAGTA  
CATTGCCATGATTGTGCACGAAAAACAAGCAAAAGTTTGGAAAATTTTGGTGTCTCGAACAGTACAAAA  
TGGAGGACCTAATCCAAGTTTATGATCAATTTACACTAGCTCTTTCATTATCATCCTCATCT

ACGCGTACGCGGCCGCTCGAGCAGAACTCATCTCAGAAGAGGATCTGGCAGCAAATGATATCCTGGATT  
ACAAGGATGACGACGATAAGGTTAA

Protein Sequence: >RC235303 representing NM\_001258249  
 Red=Cloning site Green=Tags(s)

MKSCAVSLTTAAVAFGDEAKKMAEGKASRESEEEVSLSL TVEEREALGGMSRSLFGFVRLHEDGARTKLL  
 GKAVRCYESLILKAEKVESDFFCQLGHFNLLLEDYSKALSAYQRYYSLQADYWKNAFLYGLGLVYFY  
 NAFHWAIAKAFQDVLVYDPSFCRAKEIHLRLGLMFKVNTDYKSSLKHFQLALIDCNPCTLSNAEQFHIAH  
 LYETQRKYHSAKEAYEQLLQTEENLPAQVKATVLQQLGWMHHNMDLVGDKATKESYAIQYLQKSLEADPNS  
 GQSWYFLGRCYSSIGKVQDAFISYRQSIDKSEASADTWCSIGVLYQQNQPMDALQAYICAVQLDHGHAA  
 AWMDLGTLYESCNQPQDAIKCYLNAARSKRCSNTSTLAARIKFLQAQLCNLPQSSLQNKTKLLPSIEEAW  
 SLPPIAELTSRQGAMNTAQQAYRAHDPNTEHVLNHSQTPILQQSLSLHMITSSQVEGLSSPAKKRTSSP  
 TKNGSDNWNNGGQSLSHHPVQQVYSLCLTPQKLQHLEQLRANRDNLNPAQKHQLEQLESQFVLMQMRHKE  
 VAQVRTTGIHNGAITDSSLPTNSVSNRQPHGALTRVSSVSQPGVRPACVEKLLSSGAFSAGCIPCGTSKI  
 LGSTDTILLGSNCIAGSESNGNVPYLQNTHTLPHNHTDLNSSTEERPWRKQLSNSAQGLHKSQSSCLSGP  
 NEEQPLFSTGSAQYHQATSTGIKKANEHLTLPNSVSPQGDADSHLSCHTATSGGQQGIMFTKESKPSKNR  
 SLPVETSRTGDTNCGADVKGLSNHVHQLIADAVSSPNHGDSPNLLIADNPQLSALLIGKANGNVGTGT  
 CDKVNNIHPAVHTKTDHVSASSPSAISTATSPKSTEQRINSVTSLSNPHSGLHTVNGEGLGKSQSS  
 KVLDPLASHRSTSQILPMSVSIKPSSTEVLKACRNPGKNGLSNSCILLDKCPPRPPTSPYPLPKDKL  
 NPPTPSIYLENKRDFAFFPLHQFCTNPKNPVTVIRGLAGALKLDLGLFSTKTLVEANNEHMVEVRTQLLQ  
 PADENWDPGTGKKIWRCESNRSHHTIAKYAQYQASSFQESLRENEKRTQHKDHSNDESTSENSGRRRK  
 GPFKTIKFGTNIIDLSDNKKWKLQLHELTKLPAFARVVSAGNLLTHVGHTILGMNTVQLYMKVPGSRTPGH  
 QENNNFCSVNIINIGPGDCEWFVVPEDYWGVLNDFCEKNNLNFLMSSWPNLEDLYEANVPVYRFIQRPGD  
 LVWINAGTVHWVQAVGWCNNIAWNVGPLTACQYKLAVERYEWNKLSVKSPVPMVHLSWNMARNIKVSDP  
 KLFEMIKYCLLKILKQYQTLREALVAAGKEVIWHGRTNDEPAHYCSICEVEVFNLLFVTNESNTQKTYIV  
 HCHDCARKTSKSLNFVLEQYKMEDLIQVYDQFTLALSLSSSS

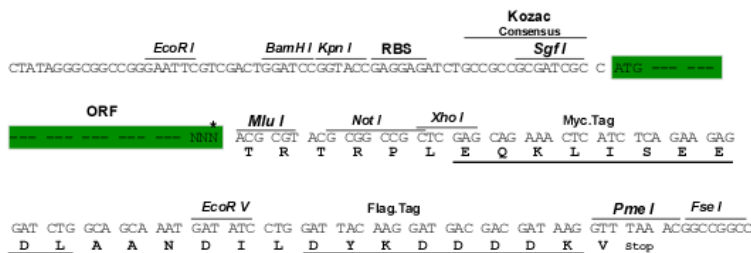
TRTRPLEQKLISEEDLAANDILDYKDDDDKV

Restriction Sites:

SgfI-MluI

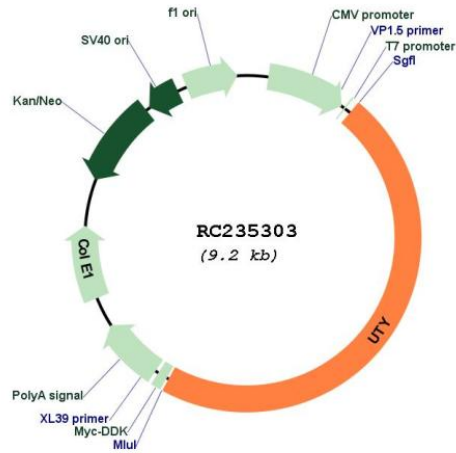
Cloning Scheme:

Cloning sites used for ORF Shuttling:



\* The last codon before the Stop codon of the ORF

Plasmid Map:



ACCN: NM\_001258249

ORF Size: 4332 bp

OTI Disclaimer: The molecular sequence of this clone aligns with the gene accession number as a point of reference only. However, individual transcript sequences of the same gene can differ through naturally occurring variations (e.g. polymorphisms), each with its own valid existence. This clone is substantially in agreement with the reference, but a complete review of all prevailing variants is recommended prior to use. [More info](#)

OTI Annotation: This clone was engineered to express the complete ORF with an expression tag. Expression varies depending on the nature of the gene.

Components: The ORF clone is ion-exchange column purified and shipped in a 2D barcoded Matrix tube containing 10ug of transfection-ready, dried plasmid DNA (reconstitute with 100 ul of water).

**Reconstitution Method:**

1. Centrifuge at 5,000xg for 5min.
2. Carefully open the tube and add 100ul of sterile water to dissolve the DNA.
3. Close the tube and incubate for 10 minutes at room temperature.
4. Briefly vortex the tube and then do a quick spin (less than 5000xg) to concentrate the liquid at the bottom.
5. Store the suspended plasmid at -20°C. The DNA is stable for at least one year from date of shipping when stored at -20°C.

**RefSeq:** [NM\\_001258249.1](#), [NP\\_001245178.1](#)

**RefSeq Size:** 6817 bp

**RefSeq ORF:** 4335 bp

**Locus ID:** 7404

**Cytogenetics:** Yq11.221

**Protein Families:** Transmembrane

**MW:** 160.6 kDa

**Gene Summary:** This gene encodes a protein containing tetratricopeptide repeats which are thought to be involved in protein-protein interactions. The encoded protein is also a minor histocompatibility antigen which may induce graft rejection of male stem cell grafts. A large number of alternatively spliced transcripts have been observed for this gene, but the full length nature of some of these variants has not been determined. [provided by RefSeq, Apr 2012]