

## Product datasheet for RC235297

### UTY (NM\_001258258) Human Tagged ORF Clone

#### Product data:

**Product Type:** Expression Plasmids  
**Product Name:** UTY (NM\_001258258) Human Tagged ORF Clone  
**Tag:** Myc-DDK  
**Symbol:** UTY  
**Synonyms:** KDM6AL; KDM6C; UTY1  
**Vector:** pCMV6-Entry (PS100001)  
**E. coli Selection:** Kanamycin (25 ug/mL)  
**Cell Selection:** Neomycin  
**ORF Nucleotide Sequence:** >RC235297 representing NM\_001258258  
Red=Cloning site Blue=ORF Green=Tags(s)

TTTTGTAATACGACTCACTATAGGGCGCCGGAATTCGTCGACTGGATCCGGTACCGAGGAGATCTGCC  
GCCGGATCGCC

ATGAAATCCTGCGCAGTGTGCTCACTACCGCCGCTGTTGCCTTCGGTGATGAGGCAAAGAAAATGGCGG  
AAGGAAAAGCGAGCCGCGAGAGTGAAGAGGAGTCTGTTAGCCTGACAGTCGAGGAAAGGGAGGCGCTTGG  
TGGCATGGACAGCCGCTCTTCGGGTTCTGAGGCTTCATGAAGATGGCGCCAGAACGAAGACCCTACTA  
GGCAAGGCTGTTGCTGCTACGAATCTTTAATCTTAAAAGCTGAAGGAAAAGTGGAGTCTGACTTCTTTT  
GCCAATTAGGTCACTTCAACCTCTTGTGGAAAGATTATCAAAAGCATTATCTGCATATCAGAGATTA  
CAGTTTACAGGCTGACTACTGGAAGAATGCTGCGTTTTATATGGCCTTGGTTTGGTCTACTTCTACTAC  
AATGCATTTCAATGGGCAATTAAGCATTTCAAGATGCCTTTATGTTGACCCGAGCTTTTGTGCGAGCCA  
AGGAAATTCATTTACGACTTGGGCTCATGTTCAAAGTGAACACAGACTACAAGTCTAGTTTAAAGCATTT  
TCAGTTAGCCTTGATTGACTGTAATCCATGTACTTTGTCCAATGCTGAAATTCATTTTCATATTGCCAT  
TTGTATGAAACCCAGAGGAAGTATCATTCTGCAAAGGAGGCATATGAACAACCTTTTGCAGACAGAAAACC  
TTCTGCACAAGTAAAAGCAACTGTATTGCAACAGTTAGTTGGATGCATCATAATATGGATCTAGTAGG  
AGACAAAGCCACAAAGGAAAGCTATGCTATTCAGTATCTCCAAAAGCTTTTGGAGGCAGATCCTAATTCT  
GGCCAATCGTGGTATTTTCTTGGAAAGTGTATTCAAGTATTGGGAAAAGTTCAGGATGCCTTTATATCTT  
ACAGGCAATCTATTGATAAATCAGAAGCAAGTGCAGATACATGGTGTTCATAGGTGTGTGTATCAGCA  
GCAAAATCAGCCTATGGATGCTTTACAGGCATATATTTGTGCTGTACAATTGGACCATGGGCATGCCGCA  
GCCTGGATGGACCTAGGTACTCTCTATGAATCCTGCAATCAACCTCAAGATGCCATTAATGCTACCTAA  
ATGCAGCTAGAAGCAAACGTTGTAGTAATACCTCTACGCTTGCTGCAAGAATTAATTTCTACAGGCTTA  
TAGAGCTCATGATCCAAATACTGAACATGTATTAACCACAGTCAAACACCAATTTTACAGCAATCCTTG  
TCACTACACATGATTACTTCTAGCCAAGTGAAGGCTGTCCAGTCTGCAAGAAGAAAAGAACATCTA  
GTCCAACAAAGAATGGTTCTGATAACTGGAATGGTGGCCAGAGTCTTTCACATCATCCAGTACAGCAAGT  
TTATTCGTTGTGTTTACACCACAGAAATTACAGCACTTGAACAACCTGCGAGCAATAGAGATAATTTA  
AATCCAGCACAGAAGCATCAGCTGGAACAGTTAGAAAAGTCAGTTTGTCTTAATGCAGCAATGAGACACA



[View online »](#)

AAGAAGTTGCTCAGGTACGAACTACTGGAATTCATAACGGGGCCATAACTGATTCATCACTGCCTACAAA  
CTCTGTCTCTAATCGACAACCACATGGTGTCTGACCAGAGTATCTAGCGTCTCTCAGCCTGGAGTTCGC  
CCTGCTTGTGTTGAAAACTTTTGTCCAGTGGAGCTTTTTCTGCAGGCTGTATTCCTTGTGGCACATCAA  
AAATTCTAGGAAGTACAGACACTATCTTGTAGGCAGTAATTGTATAGCAGGAAGTAAAAGTAAATGGAAA  
TGTGCCTTACCTGCAGCAAAAATACACACTCTACCTCATAATCATACAGACCTGAACAGCAGCACAGAA  
GAGCCATGGAGAAAACAGCTATCTAACTCCGCTCAGGGGCTTCATAAAAAGTCAGAGTTCATGTTTGTGAG  
GACCTAATGAAGAACAACCTCTGTTTTCCACTGGGTGAGCCAGTATCACCAGGCAACTAGCACTGGTAT  
TAAGAAGGCGAATGAACATCTCACTCTGCCTAGTAATTCAGTACCACAGGGGATGCTGACAGTCACCTC  
TCCTGTACTACTGCTACCTCAGGTGGACAACAAGGCATTATGTTTACCAAAGAGAGCAAGCCTTCAAAAA  
ATAGATCCTTGGTGCCTGAAACAAGCAGGCATACTGGAGACACATCTAATGGCTGTGCTGATGCAAGGG  
ACTTTCTAATCATGTTTATCAGTTGATAGCAGATGCTGTTTCCAGTCTAACCATGGAGATTCACCAAAAT  
TTATTAATTGCAGACAATCCTCAGCTCTCTGCTTTGTTGATTGAAAAAGCCAATGGCAATGTGGTACTG  
GAACCTGTGACAAAAGTGAATAATATCCACAGCTGTTTATACAAAAGACTGATCATTCTGTTGCCTCTTC  
ACCCTCTCAGCCATTTCCACAGCAACACCTTCTCCTAAATCCACTGAGCAGAGAAGCATAAACAGTGT  
ACCAGCCTAACAGTCTCACAGTGGATTACACACAGTCAATGGAGAGGGCTGGGAAGTCACAGAGCT  
CTACAAAAGTAGACCTGCCTTTAGCTAGCCACAGATCTACTTCTCAGATCTTACCATCAATGTCAGTGT  
TATATGCCCCAGTTCAACAGAAGTCTGAAAGCATGCAGGAATCCAGGTAATAATGGCTTGTCTAATAGC  
TGATTTTGTAGATAAATGTCCACCTCCAAGACCACCAACTTACCATACCCACCTTGCCAAAGGACA  
AGTTGAATCCACCACACCTAGTATTTACTTGGAAAATAAACGTGATGCTTTCTTCTCCATTACATCA  
ATTTTGTACAAAATCCAAAAACCTGTTACAGTAATACGTGGCCTTGTGGAGCTTAAATTAGATCTT  
GGACTTTTCTCTACAAAACCTTTGGTAGAAGCTAACATGAACATATGGTAGAAGTGAGGACACAGTTGC  
TGCAACCAGCAGATGAAAACCTGGGATCCCACTGGAACAAGAAAATCTGGCGTTGTGAAAGCAATAGATC  
TCATACTACAATTGCCAAATACGCACAATACCAGGCTTCTCCTTCCAGGAATCATTGAGAGAAGAAAAT  
GAGAAAAGAACACAACACAAGATCATTAGATAACGAATCCACATCTTCAGAGAATTCTGGAAGGAGAA  
GGAAAGGACCTTTTAAAACCATAAAATTTGGGACCAACATTGACCTCTCTGATAACAAAAGTGGAAAGT  
GCAGTTACATGAACTGACTAAACTTCTGCTTTTGCCTGTGGTGTGAGCAGGAAATCTTCAACCCAT  
GTTGGGCATACCATTCTGGGCATGAATACAGTACAACCTGTATATGAAAAGTCCAGGGAGTCGGACACCAG  
GTCACCAAGAAAATAACAACCTTCTGCTCTGTTAACATAAATATTGGTCCAGGAGATTGTGAATGTTTGT  
TGTACCTGAAGATTATTGGGGTGTCTGAATGACTTCTGTGAAAAAATAATTTGAATTTTTAATGAGT  
TCTTGGTGGCCCAACCTGAAGATCTTTATGAAGCAAATGTCCCTGTGTATAGATTTATTCAGCGACCTG  
GAGATTTGGTCTGGATAAATGCAGGCACGTGCATTGGGTCAAGCTGTTGGCTGGTGAATAACATTGC  
CTGGAATGTTGGTCCACTTACAGCCTGCCAGTATAAATTTGGCAGTGGAAACGGTATGAATGGAACAATTTG  
AAAAGTGTGAAGTACCAGTACCATGGTGCATCTTCTGGAATATGGCACGAAATATCAAAGTCTCAG  
ATCCAAAGCTTTTTGAAATGATTAAGTATTGTCTTTTAAAAATCTGAAGCAATATCAGACATTGAGAGA  
AGCTCTTGTGTCAGCAGGAAAAGAGTTATATGGCATGGGCGGACAAATGATGAACCAGCTCATTACTGT  
AGCATTGTGAGGTGGAGGTTTTAATCTGCTTTTGTCACTAATGAAAGCAATACTCAAAAAACCTACA  
TAGTACATTGCCATGATTGTGCACGAAAAACAAGCAAAAGTTGGAAAATTTTGGTGTCTCGAACAGTA  
CAAAATGGAGGACCTAATCCAAGTTTATGATCAATTTACACTAGCTCTTTCATTATCATCTCATCT

ACGCGTACGCGGCGCTCGAGCAGAACTCATCTCAGAAGAGGATCTGGCAGCAATGATATCCTGGATT  
ACAAGGATGACGACGAT AAGGTTTAA

Protein Sequence: >RC235297 representing NM\_001258258  
 Red=Cloning site Green=Tags(s)

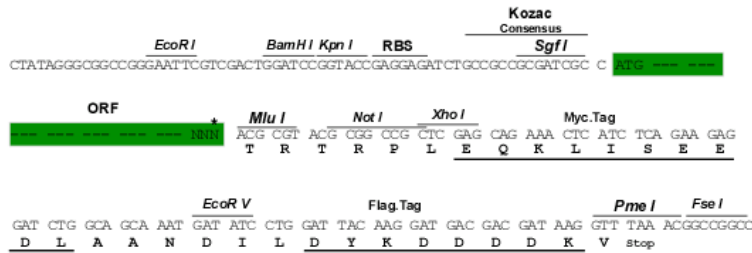
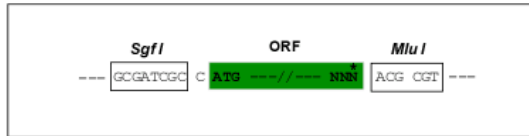
MKSCAVSLTTAAVAFGDEAKKMAEGKASRESEEEVSLSL TVEEREALGGMSRSLFGFVRLHEDGARTKLL  
 GKAVRCYESLILKAEGKVESDFCQLGHFNLLLEDYSKALSAYQRYYSLQADYWKNA AFLYGLGLVYFYF  
 NAFHWAIAKAFQDVLVYDPSFCRAKEIHLRLGLMFKVNTDYKSSLKHFQLALIDCNPCTLSNAEIQFHIAH  
 LYETQRKYHSAKEAYEQLLQ TENLPAQVKATV LQQLGWMHHNMDLVGDKATKESYAIQYLQKSL EADPNS  
 GQSWYFLGRCYSSIGKVQDAFISYRQSIDKSEASADTWC SIGVL YQQNQPM DALQAYICAVQLDHGHAA  
 AWM DLGLTYESCNPQDAIKCYLNAARSKRCSNTSTLAARIKFLQAYRAHPNTEHVLNHSQTPILQQSL  
 SLHMITSSQVEGLSSPAKKRTSSPTKNGSDNWNGGQSL SHHPVQQVYSLCLTPQKLQHLEQLRANRDNL  
 NPAQKHQLEQLESQFVLMQMRHKEVAQVRTTGIHNGAI TDSSLPTNSVSNRQPHGALTRVSSVSQPGVR  
 PACVEKLLSSGAFSAGCIPCGTSKILGSDTILLGSNCIAGSESNGNVPYLQQNHTLPHNHTDLNSSTE  
 EPWRKQLSNSAQGLHKSQS SCLSGPNEEQPLFSTGSAQYHQATSTGIKKANEHLTLPNSNVPQGDADSHL  
 SCHATSGGQQGIMFTKESKPSKNRSLVPETSRTGDT SNGCADVKGLSNHVHQLIADAVSPNHGDSPN  
 LLIADNPQLSALLIGKANGVGTGTC DKVNNIHPAVHTKTDHSVASSPSSAISTATPSPKSTEQRSINSV  
 TSLNSPHSGLHTVNGEGLKKSQSSTKV DPLASHRSTSQILPSMSVSI CPSSTEVLKACRNPGKNGLSNS  
 CILLDDKCP PPRPPTSPY PPLPKDKLNPPTPSIYLENKRDAFFPPLHQFCTNPKNPVTVIRGLAGALKLDL  
 GLFSTKTLVEANNEHMEVVRTQLLQPADENWDPTGTKIWRCESNRSHHTIAKYAQYQASSFQESLREEN  
 EKRTQHKDHDNESTSSENSRRRKGPFKTIKFGTNIDLSDNKKWKLQLHELTKLPAFARVVSAGNLLTH  
 VGHTILGMNTVQLYMKVPGSRTPGHQENNFCSVNIINIGPGDCEWFVVPEDYWGVLNDFCEKNLNF LMS  
 SWWPNLEDLYEANVPVYRFIQRPGLVWINAGTVHWVQAVGWCNNIAWNVGLTACQYKLAVERYEWNKL  
 KSVKSPVPMVHL SWNMARNIKVSDPKLFEMIKYCLL KILKQYQTLREALVAAGKEVIWHGRTNDEPAHYC  
 SICEVEVFNL FVTNESNTQKTYIVHCHDCARKT SKSLENFVVLEQYKMEDLIQVYDQFTLALSLSSSS

TRTRPLEQKLISEEDLAANDILDYKDDDDKV

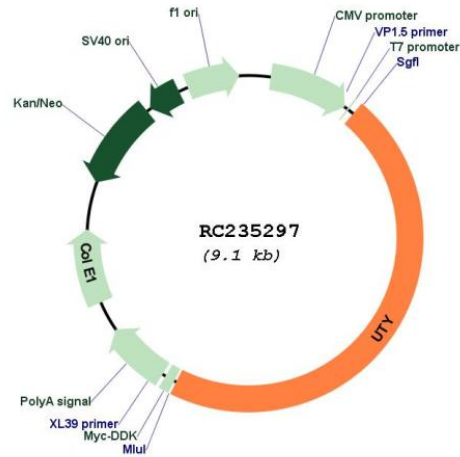
Restriction Sites:  
 Cloning Scheme:

Sgfl-MluI

Cloning sites used for ORF Shuttling:



\* The last codon before the Stop codon of the ORF

**Plasmid Map:**


**ACCN:** NM\_001258258

**ORF Size:** 4197 bp

**OTI Disclaimer:** The molecular sequence of this clone aligns with the gene accession number as a point of reference only. However, individual transcript sequences of the same gene can differ through naturally occurring variations (e.g. polymorphisms), each with its own valid existence. This clone is substantially in agreement with the reference, but a complete review of all prevailing variants is recommended prior to use. [More info](#)

**OTI Annotation:** This clone was engineered to express the complete ORF with an expression tag. Expression varies depending on the nature of the gene.

**Components:** The ORF clone is ion-exchange column purified and shipped in a 2D barcoded Matrix tube containing 10ug of transfection-ready, dried plasmid DNA (reconstitute with 100 ul of water).

**Reconstitution Method:**

1. Centrifuge at 5,000xg for 5min.
2. Carefully open the tube and add 100ul of sterile water to dissolve the DNA.
3. Close the tube and incubate for 10 minutes at room temperature.
4. Briefly vortex the tube and then do a quick spin (less than 5000xg) to concentrate the liquid at the bottom.
5. Store the suspended plasmid at -20°C. The DNA is stable for at least one year from date of shipping when stored at -20°C.

**RefSeq:** [NM\\_001258258.1](#), [NP\\_001245187.1](#)

**RefSeq Size:** 6682 bp

**RefSeq ORF:** 4200 bp

**Locus ID:** 7404

**Cytogenetics:** Yq11.221

**Protein Families:** Transmembrane

**MW:** 155.7 kDa

**Gene Summary:** This gene encodes a protein containing tetratricopeptide repeats which are thought to be involved in protein-protein interactions. The encoded protein is also a minor histocompatibility antigen which may induce graft rejection of male stem cell grafts. A large number of alternatively spliced transcripts have been observed for this gene, but the full length nature of some of these variants has not been determined. [provided by RefSeq, Apr 2012]