

Product datasheet for RC235293

UTY (NM_001258261) Human Tagged ORF Clone

Product data:

Product Type: Expression Plasmids
Product Name: UTY (NM_001258261) Human Tagged ORF Clone
Tag: Myc-DDK
Symbol: UTY
Synonyms: KDM6AL; KDM6C; UTY1
Vector: pCMV6-Entry (PS100001)
E. coli Selection: Kanamycin (25 ug/mL)
Cell Selection: Neomycin
ORF Nucleotide Sequence: >RC235293 representing NM_001258261
Red=Cloning site Blue=ORF Green=Tags(s)

TTTTGTAATACGACTCACTATAGGGCGCCGGAATTCGTCGACTGGATCCGGTACCGAGGAGATCTGCC
GCCGCGATCGCC

ATGAAATCCTGCGCAGTGTGCTCACTACCGCCGCTGTTGCCTTCGGTGATGAGGCAAAGAAAATGGCGG
AAGGAAAAGCGAGCCGCGAGAGTGAAGAGGAGTCTGTTAGCCTGACAGTCGAGGAAAGGGAGGCGCTTGG
TGGCATGGACAGCCGTCTCTTCGGGTTCTGAGGCTTCATGAAGATGGCGCCAGAACGAAGACCCTACTA
GGCAAGGCTGTTGCTGCTACGAATCTTTAATCTTAAAAGCTGAAGGAAAAGTGGAGTCTGACTTCTTTT
GCCAATTAGGTCACCTTCAACCTCTTGTGGAAAGATTATCAAAAAGCATTATCTGCATATCAGAGATTA
CAGTTTACAGGCTGACTACTGGAAGAATGCTGCGTTTTATATGGCCTTGGTTTGGTCTACTTCTACTAC
AATGCATTTTCATTGGGCAATTAAGCATTCAAGATGCCTTTATGTTGACCCAGCTTTTGTGCGAGCCA
AGGAAATTCATTTACGACTTGGGCTCATGTTCAAAGTGAACACAGACTACAAGCTAGTTTAAAGCATT
TCAGTTAGCCTTGATTGACTGTAATCCATGTACTTTGTCCAATGCTGAAATTCATTTTCATTTGCCAT
TTGTATGAAACCCAGAGGAAGTATCATTCTGCAAAGGAGGCATATGAACAACCTTTGCAGACAGAAAACC
TTCTGCACAAGTAAAAGCAACTGTATTGCAACAGTTAGTTGGATGCATCATAATATGGATCTAGTAGG
AGACAAAAGCCACAAAGGAAAGCTATGCTATTCAGTATCTCCAAAAGCTTTTGGAGGCAGATCCTAATTCT
GGCCAATCGTGGTATTTTCTTGGAAAGTGTGTTGTATCAGCAGCAAAAATCAGCCTATGGATGCTTTACAGG
CATATATTTGTGCTGTACAATTGGACCATGGGCATGCCGAGCCTGGATGGACCTAGGTACTCTCTATGA
ATCCTGCAATCAACCTCAAGATGCCATTAATGCTACCTAAATGCAGCTAGAAGCAAACGTTGTAGTAAT
ACCTCTACGCTTGTGCAAGAATTAATTTCTACAGGCTCAGTTGTGTAACCTTCCACAAAGTAGTCTAC
AGAATAAACTAAATTACTTCTAGTATTGAGGAGGCATGGAGCCTACCAATCCCCGAGAGCTTACCTC
CAGGCAGGTTGCCATGAACACAGCACAGCAGCAATCCTTGTCACTACACATGATTACTTCTAGCCAAGTA
GAAGGCCTGTCCAGTCTGCCAAGAAGAAAAGAACATCTAGTCCAACAAGAATGGTTCTGATAACTGGA
ATGGTGGCCAGAGTCTTTCACATCATCCAGTACAGCAAGTTTATTCGTTGTGTTGACACCACAGAAATT
ACAGCACTTGAACAACCTGCGAGCAAAATAGAGATAATTTAAATCCAGCACAGAAGCATCAGCTGGAACAG
TTAGAAAGTCAGTTTGTCTTAATGCAGCAAAATGAGACACAAGAAGTTGCTCAGTACGAACTACTGGAA



[View online »](#)

TTCATAACGGGGCCATAACTGATTCATCACTGCCTACAACTCTGTCTCTAATCGACAACCATGGTGC
TCTGACCAGAGTATCTAGCGTCTCTCAGCCTGGAGTTCGCCCTGCTTGTGTTGAAAACTTTTGTCCAGT
GGAGCTTTTTCTGCAGGCTGTATTCCTTGTGGCACATCAAAAATCTAGGAAGTACAGACACTATCTTGC
TAGGCAGTAATTGTATAGCAGGAAGTAAAAGTAATGGAATGTGCCTTACCTGCAGCAAAAATACACACAC
TCTACCTCATAATCATACAGACCTGAACAGCAGCACAGAAGAGCCATGGAGAAAACAGCTATCTAACTCC
GCTCAGGGCTTCATAAAAAGTCAGAGTTCATGTTTGTGAGGACCTAATGAAGAACAACCTCTGTTTTCCA
CTGGGTACAGCCAGTATCACCAGGCAACTAGCACTGGTATTAAGAAGGCGAATGAACATCTCACTCTGCC
TAGTAATTCAGTACCACAGGGGATGCTGACAGTACCTCTCCTGTCATCTGCTACCTCAGGTGGACAA
CAAGGCATTATGTTTACCAAAGAGAGCAAGCCTTCAAAAATAGATCCTTGGTGCCTGAAACAAGCAGGC
ATACTGGAGACACATCTAATGGCTGTGCTGATGTCAAGGGACTTTCTAATCATGTTTCATCAGTTGATAGC
AGATGCTGTTTCCAGTCTAACCATGGAGATTCACCAAATTTATTAATTGCAGACAATCCTCAGCTCTCT
GCTTTGTTGATTGAAAAGCCAATGGCAATGTGGTACTGGAACCTGTGACAAAGTAATAATTCACC
CAGCTGTTCATACAAAGACTGATCATTCTGTTGCCTCTTACCCTCTTACGCCATTTCCACAGCAACACC
TTCTCCTAAATCCACTGAGCAGAGAAGCATAAACAGTGTACCAGCCTAACAGTCTCACAGTGGATTA
CACACAGTCAATGGAGAGGGCTGGGGAAGTACAGAGCTCTACAAAAGTAGACCTGCCTTTAGCTAGCC
ACAGATCTACTTCTCAGATCTTACCATCAATGTAGTGTCTATATGCCCCAGTTCAACAGAAAGTTCTGAA
AGCATGCAGGAATCCAGGTA AAAATGGCTGTCTAATAGCTGCATTTTGTAGATAAATGTCACCTCCA
AGACCACCAACTTCACCATACCCACCCTTGCCAAAGGACAAGTTGAATCCACCCACACCTAGTATTTACT
TGGAAAAATAACGTGATGCTTTCTTCTCCATTACATCAATTTGTACAAAATCCAAAAACCTGTTAC
AGTAATACGTGGCCTTGTGGAGCTCTAAATTAGATCTTGGACTTTTCTCTACAAAATTTTGGTAGAA
GCTAACAAATGAACATATGGTAGAAGTGAAGACACAGTTGCTGCAACCAGCAGATGAAAATGGGATCCCA
CTGGAACAAAGAAAACTGGCGTTGTGAAAGCAATAGATCTCATACTACAATTGCCAAATACGCACAATA
CAGGCTTCTCTCTTCCAGGAATCATTGAGAGAAGAAAAAGAGAAAAGAACACAACACAAAGATCATTCA
GATAACGAATCCACATCTTCCAGGAATTTGGAAGGAGAAGGAAAGGACCTTTTAAAAACATAAAAATTTG
GGACCAACATTGACCTCTCTGATAACAAAAAGTGGAAAGTTGCAGTTACATGAACTGACTAAAATCTCTGC
TTTTGCGCGTGTGGTGTGAGCAGGAAATCTTCTAACCCATGTTGGGCATACCATTCTGGGCATGAATACA
GTACAACGTATATGAAAGTTCAGGGAGTCGGACACCAGGTCACCAAGAAAAATAACAACCTTCTGCTCTG
TTAACATAAATATTGGTCCAGGAGATTGTGAATGGTTTGTGTACCTGAAGATTATTGGGGTGTCTGAA
TGACTTCTGTGAAAAAATAAATTTGAATTTTTAATGAGTTCTTGGTGGCCCAACCTTGAAGATCTTTAT
GAAGCAAATGTCCTGTGTATAGATTTATTCAGCGACCTGGAGATTTGGTCTGGATAAATGCAGGCACTG
TGCATTGGGTTCAAGCTGTTGGCTGGTGAATAACATTGCCTGGAATGTTGGTCCACTTACAGCCTGCCA
GTATAAATTTGGCAGTGGAACGGTATGAATGGAACAAATGAAAAGTGTGAAGTCACCAGTACCCATGGTG
CATCTTTCTGGAATATGGCACGAAATATCAAAGTCTCAGATCCAAAGCTTTTTGAAATGATTAAGTATT
GTCTTTTGA AAAATCTGAAGCAATATCAGACATTGAGAGAAGCTCTTGTGTCAGCAGGAAAAGAGGTTAT
ATGGCATGGGCGGACAAATGATGAACCAGCTCATTACTGTAGCATTTGTGAGGTGGAGGTTTTAATCTG
CTTTTTGTCACTAATGAAAGCAATACTCAAAAACCTACATAGTACATTGCCATGATTGTGCACGAAAAA
CAAGCAAAAGTTTGGAAAATTTGTGGTGTCTCGAACAGTACAAAAATGGAGGACCTAATCCAAGTTTATGA
TCAATTTACACTAGCTCTTTCATTATCATCCTCATCT

ACGCGTACGCGGCCGCTCGAGCAGAACTCATCTCAGAAGAGGATCTGGCAGCAATGATATCCTGGATT
ACAAGGATGACGACGATAAGGTTTAA

Protein Sequence: >RC235293 representing NM_001258261
 Red=Cloning site Green=Tags(s)

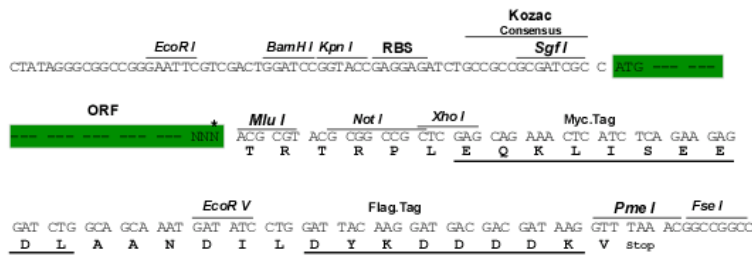
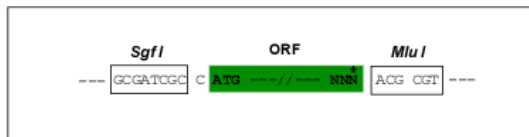
MKSCAVSLTTAAVAFGDEAKKMAEGKASRESEEEVSLSL TVEEREALGGMSRSLFGFVRLHEDGARTKLL
 GKAVRCYESLILKAEGKVESDFCQLGHFNLLLEDYSKALSAYQRYSSLQADYWKNA AFLYGLGLVYFY
 NAFHWAIAKAFQDVLVYDPSFCRAKEIHLRLGLMFKVNTDYKSSLKHFQLALIDCNPCTLSNAEIQFHIAH
 LYETQRKYHSAKEAYEQLLQ TENLPAQVKATV LQQLGWMHHNMDLVGDKATKESYAIQYLQKSL EADPNS
 GQSWYFLGSLVYQQNQPM DALQAYICAVQLDHGHAAAWMDLGTLYESCNPQDAIKCYLNAARSKRCSN
 TSTLAARIKFLQAQLCNLPQSS LQNKTKLLPSIEEAWSLPIPAELTSRQGMNTAQQQSLSLHMITSSQV
 EGLSSPAKKKRTSSPTKNGSDNWNGQSLSHHPVQQVYSLCLTPQKLQHLEQLRANRDNLNPAQKHLEQ
 LESQFVLMQMRHKEVAQVRTTGIHNGAITDSSLPTNSVSNRQPHGALTRVSSVSQPGVRPACVEKLLSS
 GAFSAGCIPCSTKILGSDTILLGSNCIAGSESNGNVPYLQNTHTLPHNHTDLNSSTEEPWRKLSNS
 AQGLHKSQSSCLSGPNEEQPLFSTGSAQYHQATSTGIKKANEHLTPSNSVPQGDADSHLSCHTATSGGQ
 QGIMFTKESKPSKNRSLVPETS RHTGDT SNGCADVKGLSNHVHQLIADAVSSPNHGDSPNLLIADNPQLS
 ALLIGKANGNVGTGTC DKVNNIHPAVHTKTDHSVASSPSSAISTATSPKSTEQRINSVTSLSNSPHSGL
 HTVNGEGLGKSQSSTKVDLPLASHRSTSQILPSMSVSI CPSSTEVLKACRNP GKNGLSNSCILLDKCPPP
 RPPTSPYPPLPKDKLNPTPSIYLENKRDFAFPPLHQFCTNPKNPVTVIRGLAGALKLDLGLFSTKTLVE
 ANNEHMEVVRTQLLQPADENWDPTGTKIWRCESNRSHTTIAKYAQYQASSFQESLREENEKRTQHKDHS
 DNESTSSENSRRRKGPFKTIKFGTNIIDLSDNKKWKLQLHELTKLPAFARVVSAGNLLTHVGHITLGMNT
 VQLYMKVPGSRTPGHQENNFCSVNINIGPGDCEWFVVPEDYWGVLNDFCEKNNL NFLMSSWWPNLEDLY
 EANVPVYRFIQRPGDLVWINAGTVHWVQAVGWCNNIAWNVGPLTACQYKLAVERYEWNKLSVKSPVPMV
 HLSWNMARNIKVSDPKLFEMIKYCLLILKQYQTLREALVAAGKEVIWHGRTNDEPAHYCSICEVEVFNL
 LFVTNESNTQKTYIVHCHDCARKTSKSL ENFV VLEQYKMEDLIQVYDQFTLALSLSSSS

TRTRPLEQKLISEEDLAANDILDYKDDDDKV

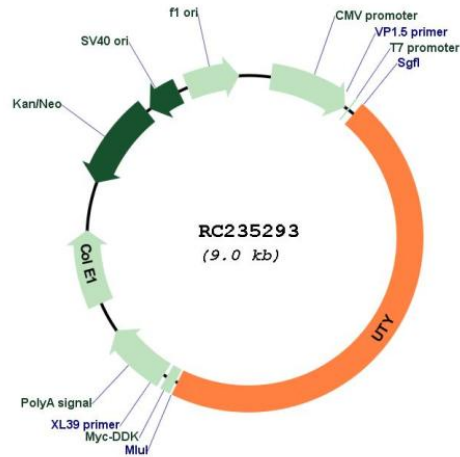
Restriction Sites:
 Cloning Scheme:

SgfI-MluI

Cloning sites used for ORF Shuttling:



* The last codon before the Stop codon of the ORF

Plasmid Map:


ACCN: NM_001258261

ORF Size: 4167 bp

OTI Disclaimer: The molecular sequence of this clone aligns with the gene accession number as a point of reference only. However, individual transcript sequences of the same gene can differ through naturally occurring variations (e.g. polymorphisms), each with its own valid existence. This clone is substantially in agreement with the reference, but a complete review of all prevailing variants is recommended prior to use. [More info](#)

OTI Annotation: This clone was engineered to express the complete ORF with an expression tag. Expression varies depending on the nature of the gene.

Components: The ORF clone is ion-exchange column purified and shipped in a 2D barcoded Matrix tube containing 10ug of transfection-ready, dried plasmid DNA (reconstitute with 100 ul of water).

Reconstitution Method:

1. Centrifuge at 5,000xg for 5min.
2. Carefully open the tube and add 100ul of sterile water to dissolve the DNA.
3. Close the tube and incubate for 10 minutes at room temperature.
4. Briefly vortex the tube and then do a quick spin (less than 5000xg) to concentrate the liquid at the bottom.
5. Store the suspended plasmid at -20°C. The DNA is stable for at least one year from date of shipping when stored at -20°C.

RefSeq: [NM_001258261.1](#), [NP_001245190.1](#)

RefSeq Size: 6652 bp

RefSeq ORF: 4170 bp

Locus ID: 7404

Cytogenetics: Yq11.221

Protein Families: Transmembrane

MW: 154.4 kDa

Gene Summary: This gene encodes a protein containing tetratricopeptide repeats which are thought to be involved in protein-protein interactions. The encoded protein is also a minor histocompatibility antigen which may induce graft rejection of male stem cell grafts. A large number of alternatively spliced transcripts have been observed for this gene, but the full length nature of some of these variants has not been determined. [provided by RefSeq, Apr 2012]