

Product datasheet for RC235289

UTY (NM_001258260) Human Tagged ORF Clone

Product data:

Product Type:	Expression Plasmids
Product Name:	UTY (NM_001258260) Human Tagged ORF Clone
Tag:	Myc-DDK
Symbol:	UTY
Synonyms:	KDM6AL; KDM6C; UTY1
Vector:	pCMV6-Entry (PS100001)
E. coli Selection:	Kanamycin (25 ug/mL)
Cell Selection:	Neomycin
ORF Nucleotide Sequence:	>RC235289 representing NM_001258260 Red=Cloning site Blue=ORF Green=Tags(s)

TTTTGTAATACGACTCACTATAGGGCGCCGGAATTCGTCGACTGGATCCGGTACCGAGGAGATCTGCC
GCC**GCGATCGCC**

ATGAAATCCTGCGCAGTGTGCTCACTACCGCCGCTGTTGCCTTCGGTGATGAGGCAAAGAAAATGGCGG
AAGGAAAAGCGAGCCGCGAGAGTGAAGAGGAGTCTGTTAGCCTGACAGTCGAGGAAAGGGAGGCGCTTGG
TGGCATGGACAGCCGTCTCTTCGGGTTCTGAGGCTTCATGAAGATGGCGCCAGAACGAAGACCCTACTA
GGCAAGGCTGTTGCTGCTACGAATCTTTAATCTTAAAAGCTGAAGGAAAAGTGGAGTCTGACTTCTTTT
GCCAATTAGGTCACTTCAACCTCTTGTGGAAAGATTATCAAAGCATTATCTGCATATCAGAGATTA
CAGTTTACAGGCTGACTACTGGAAGAATGCTGCGTTTTATATGGCCTTGGTTTGGTCTACTTCTACTAC
AATGCATTTCAATTGGCAATTAAGCATTCAAGATGCCTTTATGTTGACCCGAGCTTTTGTGCGAGCCA
AGGAAATTCATTTACGACTTGGGCTCATGTTCAAAGTGAACACAGACTACAAGCTAGTTTAAAGCATT
TCAGTTAGCCTTGATTGACTGTAATCCATGTACTTTGTCCAATGCTGAAATTCATTTCAATTGCCAT
TTGTATGAAACCCAGAGGAAGTATCATTCTCAAAGGAGGCATATGAACAACCTTTGCAGACAGAAAACC
TTCTGCACAAGTAAAAGCAACTGTATTGCAACAGTTAGTTGGATGCATCATAATATGGATCTAGTAGG
AGACAAAAGCCACAAAGGAAGCTATGCTATTCAGTATCTCAAAGTCTTTGGAGGCAGATCCTAATTCT
GGCCAATCGTGGTATTTCTTGGAAAGTGTATTCAAGTATTGGGAAAAGTTCAGGATGCCTTTATATCTT
ACAGGCAATCTATTGATAAATCAGAAGCAAGTGCAGATACATGGTGTCAATAGGTGTGTGTATCAGCA
GCAAAATCAGCCTATGGATGCTTTACAGGCATATATTTGTGCTGTACAATTGGACCATGGGCATGCCGCA
GCCTGGATGGACCTAGGTACTCTCTATGAATCCTGCAATCAACCTCAAGATGCCATTAATGCTACCTAA
ATGCAGCTAGAAGCAAACGTTGTAGTAATACCTCTACGCTTGCTGCAAGAATTAATTTCTACAGCAATC
CTTGCTCACTACACATGATTACTTCTAGCCAAGTAGAAGGCCTGTCCAGTCTGCCAAGAAGAAAAGAACA
TCTAGTCCAACAAGAATGGTTCTGATAACTGGAATGGTGCCAGAGTCTTTCACATCATCCAGTACAGC
AAGTTTATTCGTTGTGTTTGCACCCACAGAAATTACAGCACTTGAACAACCTGCGAGCAAATAGAGATAA
TTTAAATCCAGCACAGAAGCATCAGCTGGAACAGTTAGAAAGTCAGTTTGTCTTAAATGCAGCAAATGAGA
CACAAAGAAGTTGCTCAGGTACGAACTACTGGAATTCATAACGGGGCCATAACTGATTCACTGCCTA



[View online »](#)

CAAACCTGTCTCTAATCGACAACCACATGGTGTCTGACCAGAGTATCTAGCGTCTCTCAGCCTGGAGT
TCGCCCTGCTTGTGTTGAAAACTTTTGTCCAGTGGAGCTTTTTCTGCAGGCTGTATTCCTGTGGCACA
TCAAAAATTTAGGAAGTACAGACACTATCTTGTAGGCAGTAATTGTATAGCAGGAAGTAAAAGTAATG
GAAATGTGCCTTACCTGCAGCAAAAACACACACTCTACCTCATAATCATACAGACCTGAACAGCAGCAC
AGAAGAGCCATGGAGAAAAACAGTATCTAACTCCGCTCAGGGGCTTCATAAAAGTCAGAGTTCATGTTTG
TCAGGACCTAATGAAGAACAACCTCTGTTTTCCACTGGGTGAGCCAGTATCACCAGGCAACTAGCACTG
GTATTAAGAAGGCGAATGAACATCTCACTCTGCCTAGTAATTCAGTACCACAGGGGATGCTGACAGTCA
CCTCTCCTGTCTACTGCTACCTCAGGTGGACAACAAGGCATTATGTTTTACCAAAGAGAGCAAGCCTTCA
AAAAATAGATCCTTGGTGCCTGAAAACAAGCAGGCATACTGGAGACACATCTAATGGCTGTCTGATGTCA
AGGGACTTTCTAATCATGTTTCATCAGTTGATAGCAGATGCTGTTCCAGTCTAACCATGGAGATTCACC
AAATTTATTAATTGCAGACAATCCTCAGCTCTCTGCTTTGTTGATTGGAAAAGCCAATGGCAATGTGGGT
ACTGGAACCTGTGACAAAGTGAATAATTTACCCAGCTGTTCATACAAAGACTGATCATTCTGTTGCCCT
CTTCACCTCTTCAGCCATTTCCACAGCAACACCTTCTCCTAAATCCACTGAGCAGAGAAGCATAAACAG
TGTTACCAGCCTAACAGTCTCACAGTGGATTACACACAGTCAATGGAGAGGGGCTGGGGAAGTCACAG
AGCTCTACAAAAGTAGACCTGCCTTTAGCTAGCCACAGATCTACTTCTCAGATCTTACCATCAATGTCAG
TGCTATATGCCCCAGTTCAACAGAAGTCTGAAAGCATGCAGGAATCCAGGTAAAAATGGCTGTCTAA
TAGCTGCATTTTGTAGATAAATGTCCACCTCCAAGACCACCAACTTCACCATACCCACCCTTGCCAAAG
GACAAGTTGAATCCACCCACACCTAGTATTTACTTGGAAAATAAACGTGATGCTTTCTTTCTCCATTAC
ATCAATTTTGTACAAATCCAAAAACCCCTGTTACAGTAATACGTGGCCTTGTCTGGAGCTCTTAAATTAGA
TCTTGGACTTTTCTACCAAACTTTGGTAGAAGCTAACAAATGAACATATGGTAGAAGTGGAGACACAG
TTGCTGCAACCAGCAGATGAAAAGTGGGATCCCACTGGAACAAAGAAAATCTGGCGTTGTGAAAGCAATA
GATCTCATACTACAATTTGCCAAATACGCACAATACCAGGCTTCTCCTCCAGGAATCATTGAGAGAAGA
AAATGAGAAAAGAACACACAACAAAGATCATTACAGATAACGAATCCACATCTTCAGAGAATCTGGAAGG
AGAAGGAAAGGACCTTTTAAAACCATAAAAATTTGGGACCAACATTGACCTCTGTATAACAAAAAGTGGA
AGTTGCAGTTACATGAACTGACTAACTTCTGCTTTTGCAGCGTGGTGTGAGCAGGAAATCTTCTAAC
CCATGTTGGGCATACCATTCTGGGCATGAATACAGTACAAGTGTATGAAAAGTCCAGGGAGTCGGACA
CCAGGTCACCAAGAAAATAACAACCTTCTGCTCTGTTAACATAAATATTGGTCCAGGAGATTGGAATGGT
TTGTTGTACCTGAAGATTATTGGGGTGTCTGAATGACTTCTGTGAAAAAATAATTTGAATTTTTAAT
GAGTCTTGGTGGCCCAACCTTGAAGATCTTTATGAAGCAATGTCCCTGTGTATAGATTTATTCAGCGA
CCTGGAGATTTGGTCTGGATAAATGCAGGCACTGTGCATTGGGTCAAGCTGTTGGCTGGTGAATAACA
TTGCCTGGAATGTTGGTCCACTACAGCCTGCCAGTATAAATGGCAGTGAACGGTATGAATGGAACAA
ATTGAAAAGTGTGAAGTACCAGTACCCATGGTGCATCTTTCTGGAATATGGCAGCAAAATCAAAAGTC
TCAGATCCAAAGCTTTTTGAAATGATTAAGTATTGCTTTTTGAAAATCTGAAGCAATATCAGACATTGA
GAGAAGCTCTTGTGAGCAGGAAAAGAGGTTATATGGCATGGGCGGACAAATGATGAACCAGCTCATT
CTGTAGCATTGTGAGGTGGAGGTTTTAATCTGCTTTTTGTCACTAATGAAAGCAATACTCAAAAAACC
TACATAGTACATTGCCATGATTGTGCACGAAAAACAAGCAAAAGTTTGGAAAATTTGTTGGTGTCTCGAAC
AGTACAAAATGGAGGACCTAATCCAAGTTTATGATCAATTTACACTAGCTCTTTCATTATCATCCTCATC
T

ACGCGTACGCGGCGCTCGAGCAGAACTCATCTCAGAAGAGGATCTGGCAGCAATGATATCCTGGATT
ACAAGGATGACGACGATAAGGTTTAA

Protein Sequence: >RC235289 representing NM_001258260
 Red=Cloning site Green=Tags(s)

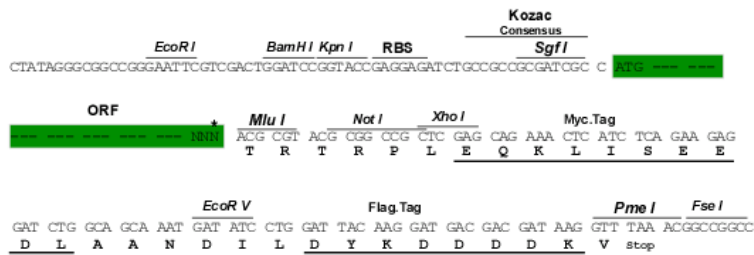
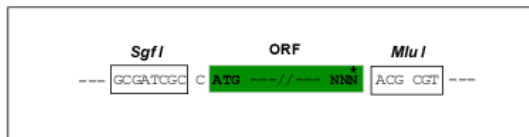
MKSCAVSLTTAAVAFGDEAKKMAEGKASRESEEEVSLSLVEEREALGGMSRSLFGFVRLHEDGARTKLL
 GKAVRCYESLILKAEKVESDFFCQLGHFNLLLEDYSKALSAYQRYYSLQADYWKNAFLYGLGLVYFYF
 NAFHWAIAKAFQDVLVYDPSFCRAKEIHLRLGLMFKVNTDYKSSLKHFQLALIDCNPCTLSNAEQFHIAH
 LYETQRKYHSAKEAYEQLLQTEMLPAQVKATVLQQLGWMHHNMDLVGDKATKESYAIQYLQKSLEADPNS
 GQSWYFLGRCYSSIGKVQDAFISYRQSIDKSEASADTWCISIGVLVYQQNQPM DALQAYICAVQLDHGHAA
 AWM DLGLTYESCNPQDAIKCYLNAARSKRCSNTSTLAARIKFLQQLSLHMITSSQVEGLSSPAKKRT
 SSPTKNGSDNWNGGQSLSHHPVQVYSLCLTPQKLQHLEQLRANRDNLNPAQKHQLEQLESQFVLMQMR
 HKEVAQVRTTGIHNGAITDSSLPTNSVSNRQPHGALTRVSSVSQPGVRPACVEKLLSSGAFSAGCIPCGT
 SKILGSTDITLLGSNCIAGSESNGNVPYLQONHTLPHNHTDLNSSTEPEWRKQLSNSAQLHKSQSCL
 SGPNEEQPLFTSGAQYHQATSTGIKKANEHLTLPNSVPPQGDADSHLSCHTATSGGQQGIMFTKESKPS
 KNRSLVPETSRTGDTSGCADVKGLSNHVHQLIADAVSSPNHGDSPNLLIADNPQLSALLIGKANGVG
 TGTCDKVNNIHPAVHTKTDHVSASSPSSAISTATPSPKSTEQRSINSVTSLSNSPHSGLHTVNGEGLKKSQ
 SSTKVVDLPLASHRSTSQILPMSVSI CPSSTEVLKACRNP GKNGLSNSCILLDKCPPRPPTSPYPLPK
 DKLNPPTPSIYLENKRDAFFPPLHQFCTNPKNPVTVIRGLAGALKLDLGLFSTKTLVEANNEHMEVVRTQ
 LLQPADENWDPTGTKIWRCESNRSHTTIAKYAQYQASSFQESLRENEKRTQHKDHSNDESTSENSEGR
 RRGKPFKTIKFGTNIIDLSDNKKWKLQLHELTKLPAFARVVSAGNLLTHVGHITLGMNTVQLYMKVPGSRT
 PGHQENNNFCSVINIGPGDCEWFVVPEDYWGVLNDFCEKNNLNF LMSSWWPNLEDLYEANVPVYRFIQR
 PGDLVWINAGTVHWVQAVGWCNNIAWNVGPLTACQYKLAVERYEWNKLSVKSPVPMVHL SWNMARNIKV
 SDPKLFEMIKYCLLKILKQYQTLREALVAAGKEVIWHGRNTDEPAHYCSICEVEVFNLLFVTNESNTQKT
 YIVHCHDCARKTSKSL ENFVVLEQYKMEDLIQVYDQFTLALSLSSSS

TRTRPLEQKLISEEDLAANDILDYKDDDDKV

Restriction Sites:
 Cloning Scheme:

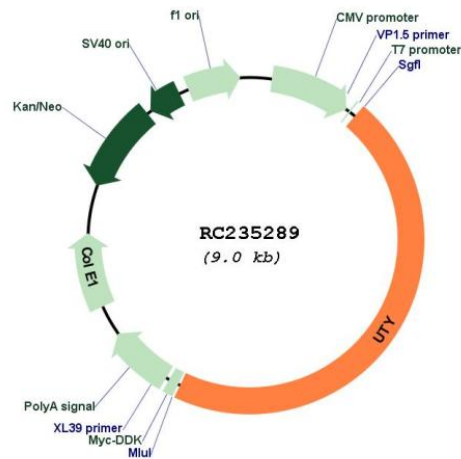
SgfI-MluI

Cloning sites used for ORF Shuttling:



* The last codon before the Stop codon of the ORF

Plasmid Map:



ACCN: NM_001258260

ORF Size: 4131 bp

OTI Disclaimer: The molecular sequence of this clone aligns with the gene accession number as a point of reference only. However, individual transcript sequences of the same gene can differ through naturally occurring variations (e.g. polymorphisms), each with its own valid existence. This clone is substantially in agreement with the reference, but a complete review of all prevailing variants is recommended prior to use. [More info](#)

OTI Annotation: This clone was engineered to express the complete ORF with an expression tag. Expression varies depending on the nature of the gene.

Components: The ORF clone is ion-exchange column purified and shipped in a 2D barcoded Matrix tube containing 10ug of transfection-ready, dried plasmid DNA (reconstitute with 100 ul of water).

Reconstitution Method:

1. Centrifuge at 5,000xg for 5min.
2. Carefully open the tube and add 100ul of sterile water to dissolve the DNA.
3. Close the tube and incubate for 10 minutes at room temperature.
4. Briefly vortex the tube and then do a quick spin (less than 5000xg) to concentrate the liquid at the bottom.
5. Store the suspended plasmid at -20°C. The DNA is stable for at least one year from date of shipping when stored at -20°C.

RefSeq: [NM_001258260.1](#), [NP_001245189.1](#)

RefSeq Size: 6616 bp

RefSeq ORF: 4134 bp

Locus ID: 7404

Cytogenetics: Yq11.221

Protein Families: Transmembrane

MW: 153.2 kDa

Gene Summary: This gene encodes a protein containing tetratricopeptide repeats which are thought to be involved in protein-protein interactions. The encoded protein is also a minor histocompatibility antigen which may induce graft rejection of male stem cell grafts. A large number of alternatively spliced transcripts have been observed for this gene, but the full length nature of some of these variants has not been determined. [provided by RefSeq, Apr 2012]