

Product datasheet for RC235286

UTY (NM_001258264) Human Tagged ORF Clone

Product data:

Product Type:	Expression Plasmids
Product Name:	UTY (NM_001258264) Human Tagged ORF Clone
Tag:	Myc-DDK
Symbol:	UTY
Synonyms:	KDM6AL; KDM6C; UTY1
Vector:	pCMV6-Entry (PS100001)
E. coli Selection:	Kanamycin (25 ug/mL)
Cell Selection:	Neomycin
ORF Nucleotide Sequence:	>RC235286 representing NM_001258264 Red=Cloning site Blue=ORF Green=Tags(s)

TTTTGTAATACGACTCACTATAGGGCGCCGGAATTCGTCGACTGGATCCGGTACCGAGGAGATCTGCC
GCC**CGATCGCC**

ATGAAATCCTGCGCAGTGTGCTCACTACCGCCGCTGTTGCCTTCGGTGATGAGGCAAAGAAAATGGCGG
AAGGAAAAGCGAGCCGCGAGAGTGAAGAGGAGTCTGTTAGCCTGACAGTCGAGGAAAGGGAGGCGCTTGG
TGGCATGGACAGCCGTCTCTTCGGGTTCTGAGGCTTCATGAAGATGGCGCCAGAACGAAGACCCTACTA
GGCAAGGCTGTTGCTGTACGAATCTTTAATCTTAAAAGCTGAAGGAAAAGTGGAGTCTGACTTCTTTT
GCCAATTAGGTCACCTTCAACCTCTGTTGGAAGATTATTCAAAAGCATTATCTGCATATCAGAGATTA
CAGTTTACAGGCTGACTACTGGAAGAATGCTGCGTTTTTATATGGCCTTGGTTTGGTCTACTTCTACTAC
AATGCATTTTCATTGGGCAATTAAGCATTTCAAGATGCCTTTATGTTGACCCGAGCTTTTGTGCGAGCCA
AGGAAATTCATTTACGACTTGGGCTCATGTTCAAAGTGAACACAGACTACAAGTCTAGTTAAAGCATTT
TCAGTTAGCCTTGATTGACTGTAATCCATGTACTTTGTCCAATGCTGAAATTCATTTTCATTTGCCAT
TTGTATGAAACCCAGAGGAAGTATCATTCTGCAAAGGAGGCATATGAACAACCTTTGCAGACAGAAAAC
TTCCTGCACAAGTAAAAGCAACTGTATTGCAACAGTTAGTTGGATGCATCATAATATGGATCTAGTAGG
AGACAAAGCCACAAAGGAAAGCTATGCTATTCAGTATCTCCAAAAGTCTTTGGAGGCAGATCCTAATTCT
GGCCAATCGTGGTATTTTCTTGAAGGCAATCTATTGATAAATCAGAAGCAAGTGCAGATACATGGTGT
CAATAGGTGTGTTGTATCAGCAGCAAAATCAGCCTATGGATGCTTTACAGGCATATATTTGTGCTGTACA
ATTGGACCATGGGCATGCCGAGCCTGGATGGACCTAGTACTCTCTATGAATCTGCAATCAACCTCAA
GATGCCATTAATGCTACCTAAATGCAGCTAGAAGCAAACGTTGTAGTAACCTCTACGCTTGTGCA
GAATTAATTTCTACAGGCTCAGTTGTGAACCTTCCACAAGTAGTCTACAGAATAAACTAAATTA
TCCTAGTATTGAGGAGGCATGGAGCCTACCAATCCCCGAGAGCTTACCTCCAGGCAGGGTGCCATGA
ACAGCACAGCAGAATGGTTCTGATAACTGGAATGGTGGCCAGAGTCTTTCACATCATCCAGTACAGCA
TTTATTGTTGTGTTTACACCACAGAAATACAGCACTTGAACAACCTGCGAGCAATAGAGATAATTT
AAATCCAGCACAGAAGCATCAGCTGGAACAGTTAGAAAAGTCAAGTTTGTCTTAATGCAGCAATGAGAC
AAGAAGTTGCTCAGTACGAACACTGGAATTCATAACGGGCCATAACTGATTCATCACTGCCTACAA



[View online »](#)

ACTCTGTCTCTAATCGACAACCACATGGTGTCTGACCAGAGTATCTAGCGTCTCTCAGCCTGGAGTTCC
CCCTGCTGTGTTGAAAACTTTTGTCCAGTGGAGCTTTTCTGCAGGCTGTATTCTTGTGGCAGATCA
AAAATTCTAGGAAGTACAGACACTATCTTGTAGGCACTAATTGTATAGCAGGAAGTAAAGTAATGGAA
ATGTGCCTTACCTGCAGCAAAAACACACACTCTACCTCATAATCATACAGACCTGAACAGCAGCACAGA
AGAGCCATGGAGAAAACAGCTATCTAACTCCGCTCAGGGGCTTCATAAAAGTCAGAGTTCATGTTTGTCA
GGACCTAATGAAGAACAACCTCTGTTTTCACTGGGTGAGCCAGTATCACCAGGCACTAGCAGTGGTA
TTAAGAAGGCGAATGAACATCTCACTCTGCCTAGTAATTCAGTACCACAGGGGGATGCTGACAGTCACT
CTCCTGTCACTGCTACCTCAGGTGGACAACAAGGCATTATGTTTACCAAAGAGAGCAAGCCTTCAAAA
AATAGATCCTTGGTGCCTGAAACAAGCAGGCATACTGGAGACACATCTAATGGCTGTGCTGATGTCAAGG
GACTTTCTAATCATGTTTATCAGTTGATAGCAGATGCTGTTTCCAGTCTAACCATGGAGATTACACAAA
TTTATTAATTGCAGACAATCCTCAGCTCTCTGCTTTGTTGATTGGAAAAGCCAATGGCAATGTGGTACT
GGAACCTGTGACAAAAGTGAATAATTCACCCAGCTGTTACATAAAGACTGATCATTCTGTTGCCTCTT
CACCTCTCAGCCATTTCCACAGCAACACCTTCTCCTAAATCCACTGAGCAGAGAAGCATAAACAGTGT
TACCAGCCTAACAGTCTCACAGTGGATTACACACAGTCAATGGAGAGGGGCTGGGGAAGTACAGAGC
TCTACAAAAGTAGACCTGCCTTTAGCTAGCCACAGATCTACTTCTCAGATCTTACCATCAATGTCAGTGT
CTATATGCCCCAGTTCAACAGAAGTTCTGAAAGCATGCAGGAATCCAGGTAAAAATGGCTGTCTAATAG
CTGCATTTTGTAGATAATGTCCACCTCCAAGACCACCAACTTACCATACCCACCTTGCCAAAAGGAC
AAGTTGAATCCACCCACACCTAGTATTTACTTGGAAAAAATAAACGTGATGCTTTCTTTCTCCATTACATC
AATTTTGTACAAATCCAAAAACCTGTTACAGTAATACGTGGCCTTGTGGAGCTTAAATTAGATCT
TGGACTTTTCTTACAAAACCTTGGTAGAAGTAACAATGAACATATGGTAGAAGTGGAGACACAGTTG
CTGCAACCAGCAGATGAAAACCTGGGATCCCACTGGAACAAAGAAAATCTGGCGTTGTGAAAGCAATAGAT
CTCATACTACAATTGCCAAATACGCACAATACCAGGCTTCTCCTTCCAGGAATCATTGAGAGAAGAAAA
TGAGAAAAGAACAACAACAAGATCATTACAGTAAACGAATCCACATCTCAGAGAATTTGGAAGGAGA
AGGAAAAGGACCTTTTAAACCATAAAATTTGGGACCAACATTGACCTCTCTGATAACAAAAAGTGAAGT
TGCAAGTTACATGAACTGACTAAACTTCTGCTTTTGCCTGTGGTGTGACGAGGAAATCTTCTAACCCA
TGTGGGCATACCATTCTGGGCATGAATACAGTACAAGTATATGAAAGTTCCAGGGAGTGGACACCA
GGTCACCAAGAAAATAACAACCTTCTGCTCTGTTAACATAAATATTGGTCCAGGAGATTGTGAATGGTTT
TTGTACCTGAAGATTATTGGGGTGTCTGAATGACTTCTGTGAAAAAATAATTTGAATTTTTAATGAG
TTCTTGGTGGCCCAACCTTGAAGATCTTATGAAGCAATGTCCCTGTGTATAGATTTATCAGCGACCT
GGAGATTTGGTCTGGATAAATGCAGGCACTGTGCATTGGGTTCAAGCTGTTGGCTGGTGAATAACATTG
CCTGGAATGTTGGTCCACTTACAGCCTGCCAGTATAAATTTGGCAGTGAACGGTATGAATGGAACAAT
GAAAAGTGTGAAGTCAACAGTACCCATGGTGCATCTTTCTGGAATATGGCACGAAATATCAAAGTCTCA
GATCCAAAGCTTTTTGAAATGATTAAGTATTGTCTTTGAAAATCTGAAGCAATATCAGACATTGAGAG
AAGCTCTTGTGAGCAGGAAAAGAGGTTATATGGCATGGGCGGACAAATGATGAACCAGCTCATTACTG
TAGCATTGTGAGGTGGAGGTTTTAATCTGCTTTTGTCACTAATGAAAGCAATACTCAAAAAACCTAC
ATAGTACATTGCCATGATTGTGCACGAAAAACAAGCAAAAGTTTGGAAAATTTTGGTGTCTCGAACAGT
ACAAAATGGAGGACCTAATCCAAGTTTATGATCAATTTACTAGCTCTTTCATTATCATCTCATCT

ACGCGTACGCGGCCGCTCGAGCAGAACTCATCTCAGAAGAGGATCTGGCAGCAATGATATCCTGGATT
ACAAGGATGACGACGATAAGGTTTAA

Protein Sequence: >RC235286 representing NM_001258264
 Red=Cloning site Green=Tags(s)

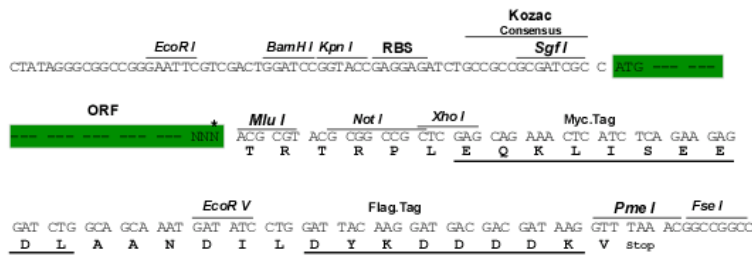
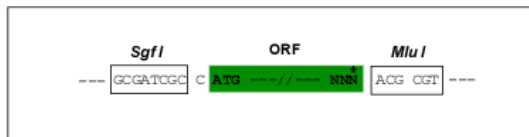
MKSCAVSLTTAAVAFGDEAKKMAEGKASRESEEEVSLSL TVEEREALGGMSRSLFGFVRLHEDGARTKLL
 GKAVRCYESLILKAEGKVESDFCQLGHFNLLLEDYSKALSAYQRYYSLQADYWKNAFLYGLGLVYFYF
 NAFHWAIAKAFQDVLVYDPSFCRAKEIHLRLGLMFKVNTDYKSSLKHFQLALIDCNPCTLSNAEQFHIAH
 LYETQRKYHSAKEAYEQLLQTEMLPAQVKATVLQQLGWMHHNMDLVGDKATKESYAIQYLQKSLPADPNS
 GQSWYFLGRQSIDKSEASADTWCISIGVL YQQNQPM DALQAYICAVQLDHGHAAAWMDLGTLYESCNPQ
 DAIKCYLNAARSKRCSNTSTLAARIKFLQAQLCNLPQSSLQNKTKLLPSIEEAWSLPIPAELTSRQGAMN
 TAQQNGSDNWGGQSLSHHPVQVYSLCLTPQKLQHLEQLRANRDNLNPAQKHQLEQLESQFVLMQMRH
 KEVAQVRTTGIHNGAITDSSLPTNSVSNRQPHGALTRVSSVSQGVVPACVEKLLSSGAFSAGCIPCCTS
 KILGSTDTILLGSNCIAGSESNGNVPYLQNTHTLPHNHTDLNSSTEERWRKQLSNSAQLHKSQS SCLS
 GPNEEQPLFSTGSAQYHQATSTGIKKANEHLTLPNSVSPQGDADSHLSCHTATSGGQQGIMFTKESKPSK
 NRSLVPETSRHTGDT SNGCADVKGLSNHVHQLIADAVSSPNHGDSPNLLIADNPQLSALLIGKANGVGT
 GTC DKVNNIHPAVHTKTDHVSASSPSSAISTATPSPKSTEQRSINSVTSLSNSPHSGLHTVNGEGLGKSQS
 STKVDLPLASHRSTSQILPSMSVSICPSSSTEVLKACRNP GKNGLSNSCILLDKCPPRPPTSPYPPLPKD
 KLNPPTPSIYLENKRDAFFPPLHQFCTNPKNPVTIRGLAGALKLDLGLFSTKTLVEANNEHMVEVRTQL
 LQPADENWDPTGTTKIWRCESNRSHTTIAKYAQYQASSFQESLREENEKRTQHKDHSNDESTSENSGRR
 RKGPFKTIKFGTIDLSNKKWKLQLHELTKLPARVVSAGNLLTHVGHTILGMNTVQLYMKVPGSRT
 GHQENNFCSVNIINIGPGDCEWFVVPEDYWGVLNDFCEKNLNLFLMSSWWPNLEDLYEANVPVYR IQR
 GDLVWVWVAVGWVAVGWCNNIAWNVGPLTACQYKLAVERYEWNKLSVKSPVPMVHL SWNMARNIKVS
 DPKLFEMIKYCLLKILKQYQTLREALVAAGKEVIWHGRTNDEPAHYCSICEVEVFNLLFVTNESNTQKTY
 IVHCHDCARKTSKSL ENFVVLEQYKMEDLIQVYDQFTLALSLSSSS

TRTRPLEQKLISEEDLAANDILDYKDDDDKV

Restriction Sites:
 Cloning Scheme:

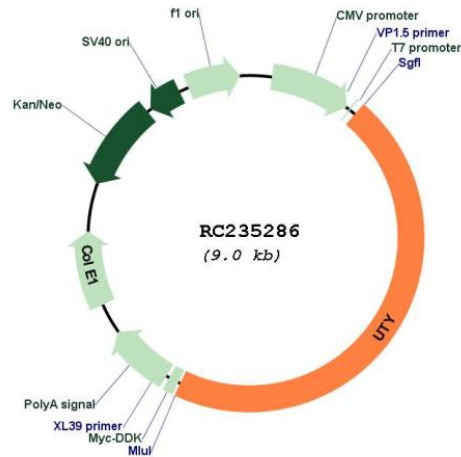
SgfI-MluI

Cloning sites used for ORF Shuttling:



* The last codon before the Stop codon of the ORF

Plasmid Map:



ACCN: NM_001258264

ORF Size: 4128 bp

OTI Disclaimer: The molecular sequence of this clone aligns with the gene accession number as a point of reference only. However, individual transcript sequences of the same gene can differ through naturally occurring variations (e.g. polymorphisms), each with its own valid existence. This clone is substantially in agreement with the reference, but a complete review of all prevailing variants is recommended prior to use. [More info](#)

OTI Annotation: This clone was engineered to express the complete ORF with an expression tag. Expression varies depending on the nature of the gene.

Components: The ORF clone is ion-exchange column purified and shipped in a 2D barcoded Matrix tube containing 10ug of transfection-ready, dried plasmid DNA (reconstitute with 100 ul of water).

Reconstitution Method:

1. Centrifuge at 5,000xg for 5min.
2. Carefully open the tube and add 100ul of sterile water to dissolve the DNA.
3. Close the tube and incubate for 10 minutes at room temperature.
4. Briefly vortex the tube and then do a quick spin (less than 5000xg) to concentrate the liquid at the bottom.
5. Store the suspended plasmid at -20°C. The DNA is stable for at least one year from date of shipping when stored at -20°C.

RefSeq: [NM_001258264.1](#), [NP_001245193.1](#)

RefSeq Size: 6613 bp

RefSeq ORF: 4131 bp

Locus ID: 7404

Cytogenetics: Yq11.221

Protein Families: Transmembrane

MW: 153.1 kDa

Gene Summary: This gene encodes a protein containing tetratricopeptide repeats which are thought to be involved in protein-protein interactions. The encoded protein is also a minor histocompatibility antigen which may induce graft rejection of male stem cell grafts. A large number of alternatively spliced transcripts have been observed for this gene, but the full length nature of some of these variants has not been determined. [provided by RefSeq, Apr 2012]