

Product datasheet for RC235269

UTY (NM_001258259) Human Tagged ORF Clone

Product data:

Product Type:	Expression Plasmids
Product Name:	UTY (NM_001258259) Human Tagged ORF Clone
Tag:	Myc-DDK
Symbol:	UTY
Synonyms:	KDM6AL; KDM6C; UTY1
Vector:	pCMV6-Entry (PS100001)
E. coli Selection:	Kanamycin (25 ug/mL)
Cell Selection:	Neomycin
ORF Nucleotide Sequence:	>RC235269 representing NM_001258259 Red=Cloning site Blue=ORF Green=Tags(s)

TTTTGTAATACGACTCACTATAGGGCGCCGGAATTCGTCGACTGGATCCGGTACCGAGGAGATCTGCC
GCC**CGATCGCC**

ATGAAATCCTGCGCAGTGTGCTCACTACCGCCGCTGTTGCCTTCGGTGATGAGGCAAAGAAAATGGCGG
AAGGAAAAGCGAGCCGCGAGAGTGAAGAGGAGTCTGTTAGCCTGACAGTCGAGGAAAGGGAGCGCTTGG
TGGCATGGACAGCCGTCTCTTCGGGTTCTGAGGCTTCATGAAGATGGCGCCAGAACGAAGACCCTACTA
GGCAAGGCTGTTGCTGTACGAATCTTTAATCTTAAAAGCTGAAGGAAAAGTGGAGTCTGACTTCTTTT
GCCAATTAGGTCACCTTCAACCTCTGTTGGAAGATTATTCAAAAGCATTATCTGCATATCAGAGATTA
CAGTTTACAGGCTGACTACTGGAAGAATGCTGCGTTTTATATGGCCTTGGTTTGGTCTACTTCTACTAC
AATGCATTTCAATGGGCAATTAAGCATTTCAAGATGTCCTTTATGTTGACCCAGCTTTTGTGCGAGCCA
AGGAAATTCATTTACGACTTGGGCTCATGTTCAAAGTGAACACAGACTACAAGTCTAGTTTAAAGCATTT
TCAGTTAGCCTTGATTGACTGTAATCCATGTACTTTGTCGAATGCTGAAATTCATTTTCATATTGCCAT
TTGTATGAAACCCAGAGGAAGTATCATTCTGCAAAGGAGGCATATGAACAACCTTTTGCAGACAGAAAACC
TTCCTGCACAAGTAAAAGCAACTGTATTGCAACAGTTAGTTGGATGCATCATAATATGGATCAGTAGG
AGACAAAAGCCACAAAGGAAAGCTATGCTATTCAGTATCTCCAAAAGCTTTTGGAGGCAGATCCTAATTCT
GGCCAATCGTGGTATTTTCTTGAAGGCAATCTATTGATAAATCAGAAGCAAGTGCAGATACATGGTGT
CAATAGGTGTGTTGTATCAGCAGCAAAATCAGCCTATGGATGCTTTACAGGCATATATTTGTGCTGTACA
ATTGGACCATGGGCATGCCGAGCCTGGATGGACCTAGTACTCTCTATGAATCTGCAATCAACCTCAA
GATGCCATTAATGCTACCTAAATGCAGCTAGAAGCAAACGTTGTAGTAATACCTCTACGCTTGTGCAA
GAATTAATTTCTACAGAATGGTTCTGATAACTGGAATGGTGGCCAGAGTCTTTCACATCATCCAGTACA
GCAAGTTTATTCGTTGTGTTGACACCACAGAAATACAGCACTTGAACAACCTGCGAGCAAAATAGAGAT
AATTTAAATCCAGCACAGAAGCATCAGCTGGAACAGTTAGAAAGTCAGTTTGTCTTAATGCAGCAAATGA
GACACAAAAGAAGTTGCTCAGGTACGAACTACTGGAATTCATAACGGGGCCATAACTGATTCACTGCC
TACAAACTCTGTCTAATCGACAACCACATGGTGCTCTGACCAGAGTATCTAGCGTCTCTCAGCCTGGA
GTTGCGCCCTGCTTGTGTTGAAAACTTTTGTCCAGTGGAGCTTTTTCTGCAGGCTGTATTCTTGTGGCA



[View online >](#)

CATCAAAAATTCTAGGAAGTACAGACACTATCTTGTAGGCAGTAATTGTATAGCAGGAAGTAAAAGTAA
TGGAAATGTGCCTTACCTGCAGCAAAAATACACACACTCTACCTCATAATCATAACAGACCTGAACAGCAGC
ACAGAAGAGCCATGGAGAAAAACAGCTATCTAACTCCGCTCAGGGGCTTCATAAAAGTCAGAGTTCATGTT
TGTCAGGACCTAATGAAGAACACCTCTGTTTTCCACTGGGTGAGCCAGTATCACCAGGCAACTAGCAC
TGGTATTAAGAAGGCGAATGAACATCTCACTCTGCCTAGTAATTCAGTACCACAGGGGGATGCTGACAGT
CACCTCTCCTGTACACTGCTACCTCAGGTGGACAACAAGGCATTATGTTTACCAAGAGAGCAAGCCTT
CAAAAAATAGATCCTTGGTGCCTGAAACAAGCAGGCATACTGGAGACACATCTAATGGCTGTGCTGATGT
CAAGGGACTTTCTAATCATGTTTCATCAGTTGATAGCAGATGCTGTTTCCAGTCTAACCATGGAGATTCA
CCAAATTTATTAATTGCAGACAATCCTCAGCTCTCTGCTTTGTTGATTGAAAAAGCCAATGGCAATGTGG
GTAAGTGGAACTGTGACAAAAGTGAATAATTCACCCAGCTGTTTCATAAAAAGACTGATCATTCTGTTGC
CTCTTACCCTCTCAGCCATTTCCACAGCAACACCTTCTCTAAATCCACTGAGCAGAGAAGCATAAAAC
AGTGTACCAGCCTAACAGTCTCACAGTGGATTACACACAGTCAATGGAGAGGGGCTGGGGAAGTCAC
AGAGCTTACAAAAGTAGACCTGCCTTTAGCTAGCCACAGATCTACTTCTCAGATCTTACCATCAATGTC
AGTGTCTATATGCCCCAGTTCAACAGAAGTTCTGAAAGCATGCAGGAATCCAGGTAATAATGGCTGTGCT
AATAGCTGCATTTGTTAGATAAATGTCCACCTCCAAGACCACCAACTTACCATACCCACCTTGCCAA
AGGACAAGTTGAATCCACCCACACTAGTATTTACTTGGAAAAATAAACGTGATGCTTTCTTCTCCATT
ACATCAATTTTGTACAAATCCAAAAAACCTGTTACAGTAATACGTGGCCTTGTGGAGCTCTTAAATTA
GATCTTGGACTTTTCTCTACAAAACCTTTGGTAGAAGCTAACAAATGAACATATGGTAGAAGTGGAGCAC
AGTTGCTGCAACCAGCAGATGAAAACCTGGGATCCCACTGGAAACAAAGAAAATCTGGCGTTGTGAAAGCAA
TAGATCTCATACTACAATTGCCAAATACGCACAATACCAGGCTTCTCTTCCAGGAATCATTGAGAGAA
GAAAATGAGAAAAGAACACAACAAAAGATCATTAGATAACGAATCCACATCTTCCAGAGAATTTCTGGAA
GGAGAAGGAAAGGACCTTTTAAAACCATAAAATTTGGGACCAACATTGACCTCTCTGATAACAAAAAGTG
GAAGTTGCAGTTACATGAACTGACTAACTTCTGCTTTTGCCTGTGGTGTGAGCAGGAATCTTCTA
ACCCATGTTGGGCATACCATTCTGGGCATGAATACAGTACAACCTGTATATGAAAGTTCAGGGAGTCGGA
CACCAGGTCACCAAGAAAATAACAACCTTCTGCTGTTAACATAAATATTGGTCCAGGAGATTGTGAATG
GTTTGTGTACCTGAAGATTATTGGGGTGTCTGAATGACTTCTGTGAAAAAATAATTTGAATTTTTTA
ATGAGTCTTGGTGGCCCAACCTTGAAGATCTTATGAAGCAAATGTCCCTGTGTATAGATTTATTCAGC
GACCTGGAGATTTGGTCTGGATAAATGCAGGCACTGTGCATTGGGTTCAAGCTGTTGGCTGGTGAATAA
CATTGCCTGGAATGTTGGTCCACTTACAGCCTGCCAGTATAAATGGCAGTGAACGGTATGAATGGAAC
AAATTGAAAAGTGTGAAGTACCAGTACCATGGTGCATCTTCTGGAATATGGCACGAAATATCAAAG
TCTCAGATCCAAAGCTTTTTGAAATGATTAAGTATTGTCTTTTAAAATTTCTGAAGCAATATCAGACATT
GAGAGAAGCTCTTGTGACGAGGAAAAGAGGTTATATGGCATGGCGGACAAATGATGAACCAGCTCAT
TACTGTAGCATTTGTGAGGTGGAGGTTTTAATCTGCTTTTTGTCACTAATGAAAGCAATACTCAAAAA
CCTACATAGTACATTGCCATGATTGTGCACGAAAAACAAGCAAAAGTTTGGAAAAATTTGTGGTGTCTGA
ACAGTACAAAAATGGAGGACCTAATCCAAGTTTATGATCAATTTACACTAGCTCTTTCATTATCATCTCA
TCT

ACGCGTACGCGGCCGCTCGAGCAGAACTCATCTCAGAAGAGGATCTGGCAGCAATGATATCCTGGATT
ACAAGGATGACGACGATAAGGTTTAA

Protein Sequence: >RC235269 representing NM_001258259
 Red=Cloning site Green=Tags(s)

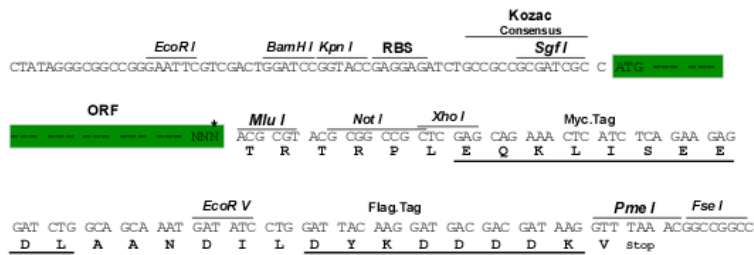
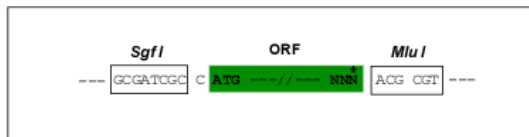
MKSCAVSLTTAAVAFGDEAKKMAEGKASRESEEEVSLSL TVEEREALGGMSRSLFGFVRLHEDGARTKLL
 GKAVRCYESLILKAEGKVESDFCQLGHFNLLLEDYSKALSAYQRYYSLQADYWKNA AFLYGLGLVYFY
 NAFHWAIAKAFQDVLVYDPSFCRAKEIHLRLGLMFKVNTDYKSSLKHFQLALIDCNPCTLSNAEQFHIAH
 LYETQRKYHSAKEAYEQLLQ TENLPAQVKATVLQQLGWMHHNMDLVGDKATKESYAIQYLQKSLEADPNS
 GQSWYFLGRQSIDKSEASADTWC SIGVL YQQNQPM DALQAYICAVQLDHGHAAMWDLGTLYESCNQPQ
 DAIKCYLNAARSKRCSNTSTLAARIKFLQNGSDNWGGQSL SHHPVQQVYSLCLTPQKLQHLEQLRANRD
 NLNPAQKHQLEQLESQFVLMQQMRHKEVAQVRTTGIHNGAITDSSLPTNSVSNRQPHGALTRVSSVSQPG
 VRPACVEKLLSSGAFSAGCIPC GTSKILGSTD TILLGSNCIAGSESNGNVPYLQNTHTLPHNHTDLNSS
 TEEPWRKQLSNSAQGLHKQS SCLSGPNEEQPLFSTGSAQYHQATSTGIKKANEHLTPSNSVPQGDADS
 HLSCHTATSGGQQGIMFTKESKPSKNRSLVPETSRHTGDT SNGCADVKGLSNHVHQLIADAVSSPNHGDS
 PNLLIADNPQLSALLIGKANGVGTGCDKVNNIHPAVHTKTDHVSASSPSSAISTATSPKSTEQR SIN
 SVTSLNSPHSGLHTVNGEGLGKSQSSTKVDLPLASHRSTSQILPSMSVSI CPSSTEV LKACRNPGKNGLS
 NSCILLDKCPPRPPTSPYPPLPKDKLNPPTPSIYLENKRD AFFPPLHQFCTNPKNPVTVIRGLAGALKL
 DLGLFSTKTLVEANNEHMEVVRTQLLQPADENWDPTGTKKIWRCESNRSHHTIAKYAQYQASSFQESLRE
 ENEKRTQHKDSDNESTSSENSRRRKGPFKTIKFGTNIIDLSDNKKWKLQLHELTKLPAFARVVSAGNLL
 THVGH TILGMNTVQLYMKVPGSRTPGHQENNNFCSVNIINIGPGDCEWVVPEDYWGVLNDFCEKNNL NFL
 MSSWPNLEDLYEANVPVYRFIQRPGDLVWINAGTVHVVQAVGWCNNIAWN VGPLTACQYKLAVERYEWN
 KLKSVKSPVPMVHL SWNMARNIKVSDPKLFEMIKYCLLILKQYQTLREALVAAGKEVIWHGRTNDEPAH
 YCSI CEVEVFNLLFVTNESNTQKTYIVHCHDCARKT SKSLENFVLEQYKMEDLIQVYDQFTLALSLSSS
 S

TRTRPLEQKLISEEDLAANDILDYKDDDDKV

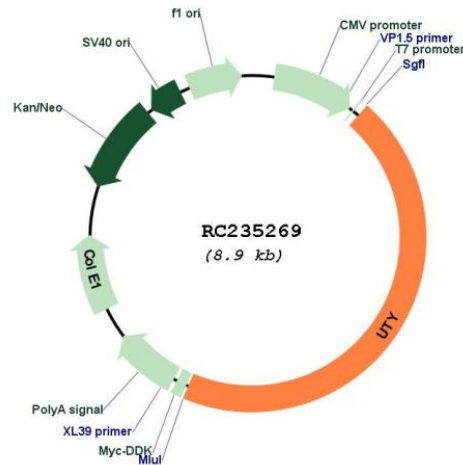
Restriction Sites:
 Cloning Scheme:

SgfI-MluI

Cloning sites used for ORF Shuttling:



* The last codon before the Stop codon of the ORF

Plasmid Map:


ACCN: NM_001258259

ORF Size: 3993 bp

OTI Disclaimer: The molecular sequence of this clone aligns with the gene accession number as a point of reference only. However, individual transcript sequences of the same gene can differ through naturally occurring variations (e.g. polymorphisms), each with its own valid existence. This clone is substantially in agreement with the reference, but a complete review of all prevailing variants is recommended prior to use. [More info](#)

OTI Annotation: This clone was engineered to express the complete ORF with an expression tag. Expression varies depending on the nature of the gene.

Components: The ORF clone is ion-exchange column purified and shipped in a 2D barcoded Matrix tube containing 10ug of transfection-ready, dried plasmid DNA (reconstitute with 100 ul of water).

Reconstitution Method:

1. Centrifuge at 5,000xg for 5min.
2. Carefully open the tube and add 100ul of sterile water to dissolve the DNA.
3. Close the tube and incubate for 10 minutes at room temperature.
4. Briefly vortex the tube and then do a quick spin (less than 5000xg) to concentrate the liquid at the bottom.
5. Store the suspended plasmid at -20°C. The DNA is stable for at least one year from date of shipping when stored at -20°C.

RefSeq: [NM_001258259.1](#), [NP_001245188.1](#)

RefSeq Size: 6478 bp

RefSeq ORF: 3996 bp

Locus ID: 7404

Cytogenetics: Yq11.221

Protein Families: Transmembrane

MW: 148.2 kDa

Gene Summary: This gene encodes a protein containing tetratricopeptide repeats which are thought to be involved in protein-protein interactions. The encoded protein is also a minor histocompatibility antigen which may induce graft rejection of male stem cell grafts. A large number of alternatively spliced transcripts have been observed for this gene, but the full length nature of some of these variants has not been determined. [provided by RefSeq, Apr 2012]