

Product datasheet for RC235258

AMBRA1 (NM_001267782) Human Tagged ORF Clone

Product data:

Product Type:	Expression Plasmids
Product Name:	AMBRA1 (NM_001267782) Human Tagged ORF Clone
Tag:	Myc-DDK
Symbol:	AMBRA1
Synonyms:	DCAF3; WDR94
Mammalian Cell Selection:	Neomycin
Vector:	pCMV6-Entry (PS100001)
E. coli Selection:	Kanamycin (25 ug/mL)
ORF Nucleotide Sequence:	>RC235258 representing NM_001267782 Red=Cloning site Blue=ORF Green=Tags(s)

TTTTGTAATACGACTCACTATAGGGCGGCCGGAATTCGTCGACTGGATCCGGTACCGAGGAGATCTGCC
GCC**CGATCGCC**

ATGAAGTTGTCCAGAAAAGAATGCTGTCCGGATACTCTGGGGCGGAGAACGGGGTGCTCGGGCCATGG
GAGCTCAGCGGCTTCTGCAGGAGCTGGTAGAAGATAAAACCCGGTGGATGAAATGGGAGGGCAAGAGAGT
AGAAGTCCGGATAGTCCACGCTCTACCTTCTTATTGGCTTCAGCCAGACAGGACTCTCTTAGCCTCC
ACCCATGTGAACCATAATATCTATATTACGGAGGTGAAGACTGGCAAGTGTGTTCCATTCCCTGATTGGAC
ACCGCCGTAATCCATGGTGTGCTACTTTTCATCCACCATCTCAGGCCTTATTGCTTCTGGCTGCCTAGA
TGGGGAGGTTAGGATTTGGGATTTACACGGTGGCAGTAAAAGCTGGTTCACAGATAGCAACAATGCCATT
GCCTCCCTGGCTTCCACCCTACGGCTCAGCTCCTGCTGATTGCCACTGCCAATGAGATCCACTTCTGGG
ACTGGAGTCGACGGGAACCCCTTGTGTGGTGAAGACAGCTAGTGAGATGGAACGGGTCCGTCTGGTGAG
ATTTGATCCACTTGGACACTACTTACTCACAGCAATTGTTAACCCCTCTAATCAACAGGGTGATGACGAA
CCAGAGATCCCCATAGATGGAACAGAATTATCCCACTACCGTCAGCGTGCCCTCTGCAATCACAGCCAG
TTCGCCGACGCCTCTCCTCCACAATTTCTGCACATGCTGTCTCCCGCTCTTCTGGCATCCAGACCGA
GCCCTTCCATCCCCGGAGCAGGCCTCGTCAACGCAGCAGGACCAGGGCCTCTGAACCGGCCGCTGCC
TTCAGTACAGTCCAGAGCAGCACTGCCGCAACACGCTCCGCAACCTCAGTCTGGTCTTACCCCGCGCT
CTTTGGGAGGGCCTCTGTCTAGCCACCCTTAGGTATCACCGAGAAATAGCTCCTGGGTTGACAGGATC
TGAGTGGACCCGGACAGTACTCAGTCTGAACTCCCGCTCTGAGGCGGAATCCATGCCCCCGCCAGAACCC
AGTGCCTCTTCGGTGAGTTTGTGTCTGTGCTGAGACAGCAGGAAGGTGGCTCTCAGGCATCTGTGTACA
CTTCAGCCACAGAAGGGAGGGGTTTTCCGGCATCAGGGTTGGCAACTGAGTCAAGTGGAGGGAATGGCTC
CAGCCAAAACAACCTCGGGCAGCATTGCCATGAGCTTCAAGTGTGACCTGAGACGCTTCTTTCTGGAGTAT
GACCGGCTTCAGGAGCTGGATCAGAGCCTGAGTGGGGAAGCTCCCAGACCCAACAGGCCAGGAAATGC
TCAACAATAACATTGAATCTGAGAGGCCAGGCCCTTCCCACCAGCCACCCACACAGCAGTGAACAACAA
CTCCAACCTGTCCGTGGCCACCTGAATCGCTGCTGCTGCTGCCACAATCTCCTGACCTCAACAACGAT



View online »

ACCCTGCGCTGGGAAAGAACCACACCTAACTACTCCTCTGGCGAGGCTAGTTCCTCTTGGCAGGTCCCCA
 GCTCCTTTGAGAGTGTGCCATCAAGTGGCAGCCAGTTGCCACCTCTCGAGCGGACTGAGGGCCAAACGCC
 CAGCTCCAGCAGGCTGGAGTTGAGCAGCTCTGCTAGTCCGAGGAGGAGAGGACTGTGGGGTGGCCTTT
 AACCAGGAGACAGGCCACTGGGAAAGAATTTACACCCAGTCCAGCAGATCTGGAAGTGTGCACAGGAGG
 CCTTACATCAGGATATGCCTGAGGAGAGCTCTGAGGAGGATCACTCAGGAGACGGAGTCTTGCTGTGC
 ACCTAGGCTGGAGTACAGCGGCGCTATCTTGGCTCACTGCAAGCTCCGCCCTCCAGGTTCCATGCCATTCT
 CCTGCCTCAGCTTCCCAAGTAGCTGGGACTACGGGAGCCACCACCAGCCCGGCTAATTTTGCATTTT
 TAGTAGAGATGGAGTTTACCATGTTAGCCAGGCTGGTCTCGAACTCCTGACCTCAGGTGATCTGCCAC
 CTCGGCCTCCCAAAGTGCTGGGATTACAGGCGTGAGCCACCAGCGCCTGGCCGAGGCTGCTGGAATCTTCC
 CTCATTTTATTATCCCGTTATGATGGAGCAGGATCCAGAGACACCCAATTTACCAGACCCAGCGAGAT
 TATCTCTGCTGCATACTACGCCAGAGGATGATCCAGTATCTCTCACGGAGAGACAGTATTGCCAGCG
 CTCATGCGCTACCAACAGAACCGTCTCCGTTCTTCCACCTCTCCTCTTCTCAGACAACCAGGGTCCA
 TCAGTAGAGGGAACCGACTTGAATTTGAGGACTTTGAGGACAATGGTGACAGATCCAGGCACCGAGCTC
 CACGCAATGCCCGGATGTCTGCACCTTCGCTTGGACGCTTTGCCAAGGCGTTTCTTGCTGCCTGAGTA
 CTTGCCTTATGCTGGGATTTTTCATGAACGTGGACAGCCTGGCTTGGCTACTCACTCTTCTGTTAACAGG
 GTCTGGCAGGGGCACTGATCGGTGATGGACAGCTGCTGTGGCCAGTAACATTGCCAATACTACCTACC
 GGCTCCAGTGGTGGGACTTCACTAAGTTTGACCTCCCTGAAATCAGTAATGCTTCCGTGAATGTGCTGGT
 GCAGAAGTGAAGATCTACAATGATGCCAGCTGTGACATTTCTGCAGATGGCCAGCTCCTGGCAGCTTTC
 ATCCCCAGCAGCCAGAGGGGCTTTCCTGATGAAGGCATCTGGCAGTGTACTCCCTGGCCCCCATAAACC
 TGGGGCAAATGCTCTACACCAAGCGATTTGGTCCCAATGCCATTTCCGGTGAAGGCTGTCCCAATGGGCG
 ATATGTAATGGTGGGCTTGGCCTCACGAAGGATCTGCTGCACCCCTCCAGAGACATGGTGGCCAG
 GTCTTCAGGCTGCAACAGGCCATGGTGGAGAGACCTCCATGAGGAGAGTTTTCAACGTCTTTATCCCA
 TGCCCTGCCGACCAGCGGAGACATGTCAGTATCAACTCTGCCGTTGGCTGCCTGAGCCAGGGCTTGGCTT
 GGCTATGGTACTAACAAAGGAGACCTGGTGATCTGCCGACCAGAGGCCTTAAACTCTGGTGTGAGTAC
 TACTGGGACCAGCTGAACGAGACGGTCTTCACTGTCCATTCCAACAGCAGGAGCAGCGAGCGGCCTGGAA
 CCAGCAGAGCCACATGGAGGACAGACAGAGACATGGGGCTGATGAATGCCATTGGGCTTACGCCCGGAA
 CCCTGCCACCTCAGTGACATCTCAGGGCACCAGACTCTGGCCCTTACAGCTGCAGAATGCCGAAACACAG
 ACTGAGAGGGAGGTGCCGGAGCCAGGGACAGCCGCTCAGGTCTGGTGAAGGTGAGGGTTCAGAGTATG
 GTGCCAGTGGAGAAGATGCGCTCAGCAGGATCCAGAGGCTGATGGCGGAGGGCGCATGACAGCCGTGGT
 GCAGCGGGAGCAGAGCACCACATGGCCTCCATGGGCGGCTTCGGCAACAACATCATCGTACGCCACCGC
 ATTCACCGCAGCTCTCAGACGGGCACTGAACCTGGTGCCGCCACACCTCCTCACCCAGCCCTCCACCT
 CTCGGGGACTGCTCCCAGAGGCCGGCAACTGGCAGAGCGAGGCCTAAGCCCCGGACAGCTTCTGGGA
 CCAGCCTGGTACCCTGGGCGGGAGCAACCCAGCCAACCCTGCCCTCTTCTCCCTGTCCCCATTCTCT
 GTTTCCCTTCCCAGCGCTGAGGGACCAACCCTCCACTGCGAGTTGACCAATAACAACCACCTTCTGGATG
 GTGGCAGCAGCAGGGGGACGCTGCAGGCCCTAGGGGAGAACCACGGAACAGG

ACGCGTACGCGGCCGCTCGAGCAGAACTCATCTCAGAAGAGGATCTGGCAGCAAATGATATCCTGGATT
 ACAAGGATGACGACGATAAGGTTTAA

Protein Sequence: >RC235258 representing NM_001267782
 Red=Cloning site Green=Tags(s)

```

MKVVPKNAVRILWGRERGARAMGAQRLLQELVEDKTRWMKWEKRVLPDSRSTFLLAFSPDRLLAS
THVNHNIYITEVKTGKCVHSLIGHRRTPWCVTFHPTISGLIASGLDGEVRIWDLHGGSESWFTDSNNAI
ASLAFHPTAQLLLIATANEIHFWDWSRREPFVAVKTASEMERVLRVRFDPLGHYLLTAIVNPSNQGDDE
PEIPIDGTELSHYRQRALLQSQPVRRTPLLLHNFLHMLSSRSSGIQTEPFHPPEQASSTQQDQGLNRP
FSTVQSSTAGNTRLRNLSLGPTRRSLGGPLSSHPSTRYHREIAPGLTGSEWTRTVLSLNSRSEAESMP
PRTSASSVLSLSVLRQQEGGSQASVYTSATEGRGFPASGLATESDGGNGSSQNNSGSIRHELQCDLRR
FFLEYDRLQELDQSLSGEAPQTQQAQEMLNNNIESERPGPSHQPTPHSSENNNLNRGHLNRCRACHN
LLTFNNDTLRWERTTPNYSSGEASSWQVPSSFESVPSGSQLPPLERTEGQTPSSSRLELSSSASPQ
EERTVGVAFNQETGHWERIYQSSRSGTVSQEALHQDMPEESSEEDSLRRRSLALSPRLEYSGAILA
HCKLRLPGSCHSPASASQVAGTTGAHHHARLIFAFVEMEFHHSQAGLELLTSGDLPTSASQSAGIT
GVSHRAWPRLLLESSLISLSRYDGAGSREHPIYPDPARLSPAAYYAQRMIQYLSRRDSIRQRSMRY
QQNRLRSSTSSSSDNQGPSVEGTDLEFEDFEDNGDRSRHRAPRNARMSAPSLGRFVPRRFLPEYLP
YAGIFHERGQPLATHSSVNRVLGAVIGDQSAVASNIANTTYRLQWDFTKFDLPEISNASVNVLVQNC
KIYNDASCDISADGQLLAAPIPSSQRGFPDEGILAVYSLAPHNLGEMLYTKRFGPNAISVSLSPMGR
YVMVGLASRRILLHPSTEHMVAQVFRLQQAHGGETSMRRVFNLYPMPADQRRHVSINSARWLPEP
GLGLAYGTNKGDLVICRPEALNSGVEYYWDQLNETVFTVHSNSRSESRPGTSRATWRTRDRDML
MNAIGLQPRNPATSVTSQGTQTLALQLQNAETQTEREVPEPGTAASGPGEGEGSEYGASGEDAL
SRIQRLMAEGGMTAVVQREQSTTMASMGFGNNIIVSHRIHRSSQTGETPGAHAHTSSPQPSTSR
GLLPEAGQLAERGLSPRTASWDQPGTPGREPTQPTLPSSSPVPIPVSLPSAEGPTLHCEL
TNNHLLDGGSSRGDAAGPRGEPNR
  
```

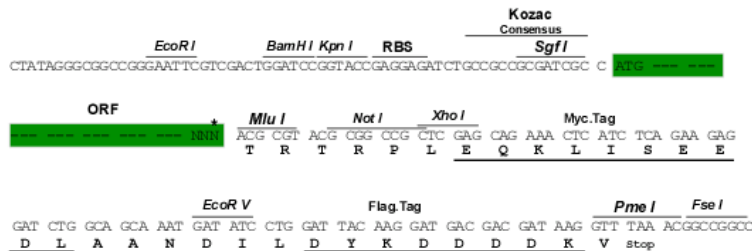
TRTRPLEQKLISEEDLAANDILDYKDDDDKV

Restriction Sites:

SgfI-MluI

Cloning Scheme:

Cloning sites used for ORF Shuttling:



* The last codon before the Stop codon of the ORF

ACCN: NM_001267782

ORF Size: 3903 bp

OTI Disclaimer: Due to the inherent nature of this plasmid, standard methods to replicate additional amounts of DNA in E. coli are highly likely to result in mutations and/or rearrangements. Therefore, OriGene does not guarantee the capability to replicate this plasmid DNA. Additional amounts of DNA can be purchased from OriGene with batch-specific, full-sequence verification at a reduced cost. Please contact our customer care team at custsupport@origene.com or by calling 301.340.3188 option 3 for pricing and delivery.

The molecular sequence of this clone aligns with the gene accession number as a point of reference only. However, individual transcript sequences of the same gene can differ through naturally occurring variations (e.g. polymorphisms), each with its own valid existence. This clone is substantially in agreement with the reference, but a complete review of all prevailing variants is recommended prior to use. [More info](#)

OTI Annotation: This clone was engineered to express the complete ORF with an expression tag. Expression varies depending on the nature of the gene.

Components: The ORF clone is ion-exchange column purified and shipped in a 2D barcoded Matrix tube containing 10ug of transfection-ready, dried plasmid DNA (reconstitute with 100 ul of water).

Reconstitution Method:

1. Centrifuge at 5,000xg for 5min.
2. Carefully open the tube and add 100ul of sterile water to dissolve the DNA.
3. Close the tube and incubate for 10 minutes at room temperature.
4. Briefly vortex the tube and then do a quick spin (less than 5000xg) to concentrate the liquid at the bottom.
5. Store the suspended plasmid at -20°C. The DNA is stable for at least one year from date of shipping when stored at -20°C.

RefSeq: [NM_001267782.2](#)

RefSeq Size: 5315 bp

RefSeq ORF: 3906 bp

Locus ID: 55626

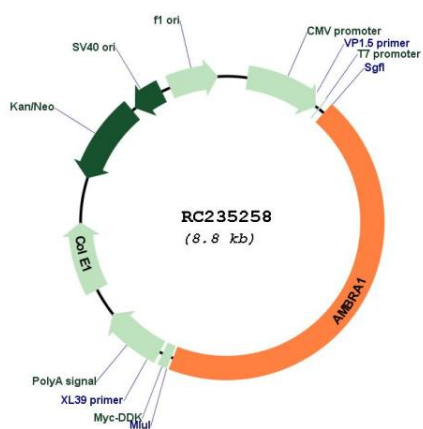
UniProt ID: [Q9C0C7](#)

Cytogenetics: 11p11.2

MW: 143 kDa

Gene Summary: Regulates autophagy and development of the nervous system. Involved in autophagy in controlling protein turnover during neuronal development, and in regulating normal cell survival and proliferation (By similarity).[UniProtKB/Swiss-Prot Function]

Product images:



Circular map for RC235258