

Product datasheet for RC235214

SEMA5B (NM_001256347) Human Tagged ORF Clone

Product data:

Product Type:	Expression Plasmids
Product Name:	SEMA5B (NM_001256347) Human Tagged ORF Clone
Tag:	Myc-DDK
Symbol:	SEMA5B
Synonyms:	SEMAG; SemG
Mammalian Cell Selection:	Neomycin
Vector:	pCMV6-Entry (PS100001)
E. coli Selection:	Kanamycin (25 ug/mL)
ORF Nucleotide Sequence:	>RC235214 representing NM_001256347 Red=Cloning site Blue=ORF Green=Tags(s)

TTTTGTAATACGACTCACTATAGGGCGGCCGGAATTCGTCGACTGGATCCGGTACCGAGGAGATCTGCC
GCC**CGATCGCC**

ATGCTGCATCTGTCAGCAGAGGAAGCCATTGGCTGCGTGAGGGTCAGAAGGAGCTTCATAGATGAGCTGG
CATTTGGGAGAGGGCATTCTACAGGGACGGCAAGCAGAAGCGAAGGGATCGAGTGAGTGGTCCAGCTG
GTGCTGGCCTGTGTCTTTGGATGCCCTGTGGCTTCAGTCCGCTCCTGTTGCCACCACCTCGTCCCT
GGGCCGCTGATACCCAGCCCAACAGCTAAGGTGTGGATGGACAGTAGGGGGCTGGCTTCTCTACTGG
TCAGGGGTCTTCTCCCTGTCTGCCTCCGGAGCTAGGACTGCAGAGGGGCTATCATGGTCTTGCAAG
CCCCTGGCTGTCTCGCTGTTGCTGCCAGCCTCACACTGCTGGTGTCCACCTCTCCAGCTCCAGGAT
GTCTCCAGTGAGCCCAGCAGTGAGCAGCAGCTGTGCGCCCTTAGCAAGCACCCACCGTGGCCTTTGAAG
ACCTGCAGCCGTGGGTCTCTAACTTACCTACCCTGGAGCCCGGATTTCTCCAGCTGGCTTTGGACCC
CTCCGGGAACCAGCTCATCGTGGGAGCCAGGAACCTCTTCCAGCTCAGCCTTGCCAATGTCTCTCTT
CTTCAGGCCACAGAGTGGGCTCCAGTGAGGACACGCGCCGCTCCTGCCAAAGCAAAGGGAAGACTGAGG
AGGAGTGCAGAACTACGTGCGAGTCTGATCGTCGCGCGCCGGAAGGTGTTCAATGTGTGAACCAATGC
CTTTTCCCCATGTGCACCAGCAGACAGGTGGGAACCTCAGCCGACTATTGAGAAGATCAATGGTGTG
GCCCGCTGCCCTATGACCCAGCCACAACCTCCACAGCTGTCTCTCCAGGGGAGCTCATGCAAG
CCAGGTATCGACTTCTCAGGTGCGGACCTGCCATCTACCGAGCCTGGGCAGTGGGCCACCGCTTCG
CACTGCCAATAAATAACTCCAAGTGGCTTAATGAGCCAACTTCGTGGCAGCCTATGATATTGGGCTGTTT
GCATACTTCTTCTGCGGGAGAAGCAGTGAGCAGCAGCTGTGGACGACCGTGTACTCTCGCTGGCCC
GCGTGTGCAAGAATGACGTGGGGGCGGATTCTGCTGGAGGACACATGGACCACATTATGAAGCCCCG
GCTCAACTGCTCCCGCCGGGCGAGTCCCCTTACTATAACGAGCTGCAGAGTGCCTTCCACTTGCCG
GAGCAGGACCTCATCTATGGAGTTTTACAACCAACGTAACAGCATCGCGGCTTCTGCTGTCTGCGCT
TCAACCTCAGTGTATCTCCAGGCTTTCAATGGCCATTTGCTACCAGGAGAACCCAGGGCTGCCTG
GCTCCCATAGCCAACCCATCCCAATTTCCAGTGTGGCACCCTGCCTGAGACCGTCCCAACGAGAAC



[View online >](#)

CTGACGGAGCGCAGCCTGCAGGACGCGCAGCGCCTCTTCCTGATGAGCGAGGCCGTGCAGCCGGTGACAC
CCGAGCCCTGTGTACCCAGGACAGCGTGCCTTCTCACACCTCGTGGTGGACCTGGTGCAGGCTAAAGA
CACGCTTACCATGTACTCTACATTGGCACCGAGTCGGGCACCATCCTGAAGGCGCTGTCCACGGCGAGC
CGCAGCCTCCACGGTGTACTTGGAGGAGCTGCACGTGCTGCCCCGGGCGCCGCGAGCCCTGCGCA
GCCTGCGCATCCTGCACAGCGCCCGCGCTCTTCGTGGGGCTGAGAGACGGCGTCTGCGGGTCCCCT
GGAGAGGTGCGCCGCCTACCGCAGCCAGGGGGCATGCCTGGGGGCCGGGACCCGTAAGTGGCTGGGAC
GGGAAGCAGCAACGTTGCAGCACACTCGAGGACAGCTCCAACATGAGCCTCTGGACCCAGAACATCACCG
CCTGTCTGTGCGGAATGTGACACGGGATGGGGCTTCGGCCCATGGTACCATGGCAACCATGTGAGCA
CTTGATGGGGACAACCTCAGGCTCTTGCCTGTGTGAGCTCGATCCTGTGATTCCCTCGACCCCGTGT
GGGGCCCTTACTGCCTGGGGCCAGCCATCCACATCGCCAACTGCTCCAGGAATGGGGCGTGGACCCCGT
GGTCATCGTGGGCGTGTGCAGCACGTCTGTGGCATCGGCTTCCAGGTCGCCAGCGAAGTTGCAGCAA
CCCTGCTCCCCGCCACGGGGCCGCATCTGCGTGGGCAAGAGCCGGGAGGAACGGTTCTGTAATGAGAAC
ACGCTTGGCCGGTGCCTCTTCTGGGCTTCTGGGGCTCCTGGAGCAAGTGCAGCAGCAACTGTGGAG
GGGGCATGCAGTCGCGGCTCGGGCCTGCGAGAACGGCAACTCCTGCCTGGGCTGCGGCGTGGAGTTCAA
GACGTGCAACCCGAGGGCTGCCCGAAGTGGCGGCAACACCCCTGGACGCCGTGGCTGCCCGTGAAC
GTGACGACGGGGCGGACGGCAGGAGCAGCGGTTCCGCTTACCTGCCGCGCGCCCTTGACAGCCCGC
ACGGCCTGCAGTTCGGCAGGAGAAGGACCAGAGCAGGACCTGTCCCGGGACGGCTCCGGCTCCTGCGA
CACCGACGCCCTGGTGGAGGTCCTCCTGCGCAGCGGGAGCACCTCCCCGCACACGGTGGAGGGGGCTGG
GCCGCTGGGGCCCGTGGTGTCTCCTGCCGGACTGCGAGCTGGGCTTCCGCTCCGCAAGAGAACGT
GCACTAACCCGGAGCCCCGCAACGGGGGCTGCCCTGCGTGGGCGATGCTGCCGAGTACCAGGACTGCAA
CCCCAGGCTTGGCCAGTTCGGGGTGTGGTCTGCTGGACCTCATGGTCTCCATGCTCAGTTCTCTGT
GGTGGGGTCACTATCAACGCACCCGTTCTGCACCAGCCCCGCACCCTCCCCAGGTGAGGACATCTGTC
TCGGGCTGCACACGGAGGAGGCACTATGTGCCACACAGGCTGCCAGAAGGCTGGTGCCTGGTCTGA
GTGGAGTAAGTGCCTGACGACGGAGCCAGAGCCGAAGCCGGCACTGTGAGGAGCTCCTCCAGGGTCC
AGCGCCTGTGCTGAAACAGCAGCCAGAGCCGCCCTGCCCTACAGCGAGATTCCCGTATCCTGCCAG
CCTCCAGCATGGAGGAGGCCACCGACTGTGCAGGGTTCAATCTCATCCACTTGGTGGCCACGGGCATCTC
CTGCTTCTGGGCTCTGGGCTCCTGACCCTAGCAGTGTACCTGTCTTGCCAGCACTGCCAGCGTCAGTCC
CAGGAGTCCACTGGTCCATCCTGCCACCCCAACCATTTGCACTACAAGGGCGGAGGCCACCCGAAGA
ATGAAAAGTACACACCCATGGAATCAAGACCCTGAACAAGAATAACTTGATCCCTGATGACAGAGCCAA
CTTCTACCCATTGCAGCAGACCAATGTGTACACGACTACTACTACCAAGCCCCCTGAACAAACACAGC
TTCCGGCCCGAGGCTCACCTGGACAACGGTGTCTCCCAACAGC

ACGCGTACGCGGCGCTCGAGCAGAACTCATCTCAGAAGAGGATCTGGCAGCAAATGATATCCTGGATT
ACAAGGATGACGACGATAAGGTTTAA

Protein Sequence: >RC235214 representing NM_001256347
 Red=Cloning site Green=Tags(s)

MLHL SAEEAIGCVRRSFIDELAFGRGHSTGTGKQRRDRVSGSSWCLACVSWMPCGFSPSPVAHHLVP
 GPPDTPAQQLRGWTVGGWLLSLVRGLLPCLPPGARTAEGPIMVLAVSLLPLSLTLLVSHLSSSQD
 VSSEPSSEQQLCALSKHPTVAFEDLQPWVSNFTYPGARDFSQLALDPSGNQLIVGARNYLFRLSLANVSL
 LQATEWASSEDTRRSCQSKGKTEEECQNYVRLIVAGRKVFMCGTNAFSPMCTSRQVGNLSRTIEKINGV
 ARCPYDPRHNSTAVISSQGELYAATVIDFSGRDPAIYRSLGSGPPLRTAQYNSKWLNEPNFVAAYDIGLF
 AYFFLRNAVEHDCGRTVYSRVARVCKNDVGGRFLEDTWTTFMKARLNC SRPGEVPFYYNELQSAFHLP
 EQDLIYGVFTTNVNSIAASAVCAFNL SAI SQAFNGPFRYQENPRAAWLP IANP IPNFQCGTLPETGPNEN
 LTERSLQDAQRLFLMSEAVQPVTPPCVTQDSVRF SHL VVDLVQAKDTL YHVLYIGTESGTLKALSTAS
 RSLHGCVLEELHVLPPGRREPLRSLRILHSARALFVGLRDGVL RVPLERCAAYRSQGA CLGARDPYCGWD
 GKQQRCTLEDSSNMSLWTQNTACPVNRVTRDGGFGPWPWPQCEHLGDNSGSLCRARSCDSPRRC
 GGLDCLGPAIHIANCSRNGAWTPWSSWALCSTSCGIGFQVRQRSCSNPAPRHGGRICV GKSREERFCNEN
 TPCPVPIFWASWGSWSKSSNCGGGMQSRRRACENGNSCLGCGVEFKTCNPEGCPEVRRNTPWTPWLPVN
 VTQGGARQEQRFRFTCRAPLADPHGLQFGRRRTE TRTCPADGSGSCD TDALVEVLLRSGSTSPHTVSGGW
 AAWGPWSSCSRDCELGFRVRKRTCTNPEPRNGGLPCVGDAAEYQDCNPQACPVRGAWSCWTSWSPCSASC
 GGGHYQRTRSTSPAPSPGEDICLGLHTEEALCATQACPEGSPWSEWSKCTDDGAQSRSRHCEELLPGS
 SACAGNSSQSRPCPYSEIPVILPASSMEEATDCAGFNL IHLVATGISCFLGSGLL TLAVLYLSCQHCQRQS
 QESTLVHPATPNHLHYKGGGTPKNEKYTPMEFKTLNKNLIPDDRANFYPLQQTNVYTTTTPSPLNKHS
 FRPEASPGQRCFPNS

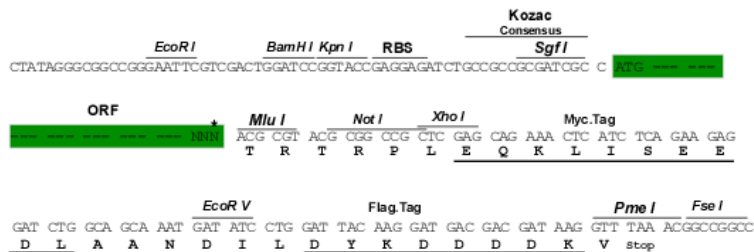
TRTRPLEQKLISEEDLAANDILDYKDDDDKV

Restriction Sites:

SgfI-MluI

Cloning Scheme:

Cloning sites used for ORF Shuttling:



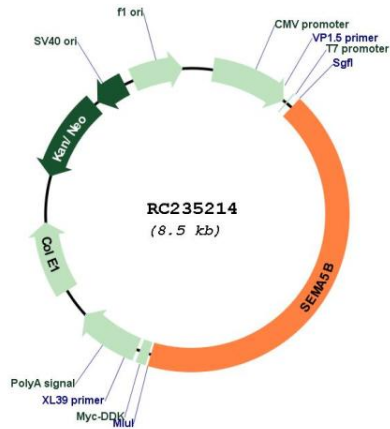
* The last codon before the Stop codon of the ORF

ACCN: NM_001256347

ORF Size: 3615 bp

OTI Disclaimer:	The molecular sequence of this clone aligns with the gene accession number as a point of reference only. However, individual transcript sequences of the same gene can differ through naturally occurring variations (e.g. polymorphisms), each with its own valid existence. This clone is substantially in agreement with the reference, but a complete review of all prevailing variants is recommended prior to use. More info
OTI Annotation:	This clone was engineered to express the complete ORF with an expression tag. Expression varies depending on the nature of the gene.
Components:	The ORF clone is ion-exchange column purified and shipped in a 2D barcoded Matrix tube containing 10ug of transfection-ready, dried plasmid DNA (reconstitute with 100 ul of water).
Reconstitution Method:	<ol style="list-style-type: none"> 1. Centrifuge at 5,000xg for 5min. 2. Carefully open the tube and add 100ul of sterile water to dissolve the DNA. 3. Close the tube and incubate for 10 minutes at room temperature. 4. Briefly vortex the tube and then do a quick spin (less than 5000xg) to concentrate the liquid at the bottom. 5. Store the suspended plasmid at -20°C. The DNA is stable for at least one year from date of shipping when stored at -20°C.
RefSeq:	NM_001256347.1 , NP_001243276.1
RefSeq Size:	4579 bp
RefSeq ORF:	3618 bp
Locus ID:	54437
UniProt ID:	Q9P283
Cytogenetics:	3q21.1
Protein Families:	Transmembrane
Protein Pathways:	Axon guidance
MW:	132.4 kDa
Gene Summary:	This gene encodes a member of the semaphorin protein family which regulates axon growth during development of the nervous system. The encoded protein has a characteristic Sema domain near the N-terminus, through which semaphorins bind to plexin, and five thrombospondin type 1 repeats in the C-terminal region of the protein. The protein product may be cleaved and exist as a secreted molecule (PMID: 19463192). Multiple transcript variants encoding different isoforms have been found for this gene. [provided by RefSeq, Jan 2012]

Product images:



Circular map for RC235214