

Product datasheet for RC235206

SORCS1 (NM_001206569) Human Tagged ORF Clone

Product data:

Product Type: Expression Plasmids
Product Name: SORCS1 (NM_001206569) Human Tagged ORF Clone
Tag: Myc-DDK
Symbol: SORCS1
Synonyms: hSorCS
Mammalian Cell Selection: Neomycin
Vector: pCMV6-Entry (PS100001)
E. coli Selection: Kanamycin (25 ug/mL)
ORF Nucleotide Sequence: >RC235206 representing NM_001206569
Red=Cloning site Blue=ORF Green=Tags(s)

TTTTGTAATACGACTCACTATAGGGCGGCCGGAATTCGTCGACTGGATCCGGTACCGAGGAGATCTGCC
 GCCCGATCGCC

ATGGGAAAAGTTGGCGCCGGCGGGCTCCCAAGCCGGCTGAGCGCGCTCCTCGCCGGCGGGGCTCT
 TGATCCTCTGCGCCCCGGCGTCTGCGCGCGGGCTCCTGCTGCCCTCGCCGACCCCAGCTCCGCTCC
 ACGCTCGGCTCGACCCCTAGGGCTTTTCCCACAGGGCGGCCAGGCAGGGCTCCTGCCACGCCCTG
 CCCCTCGTAGTGGTCCCCTGTTCTCAGTGGCCCCGGGACCGAGCGCTATCCCTGGAGCGGGCTCGG
 GCACTGGGGCATCCATGGCGTTGCTGCACGCTCCGGCCGGAGGAGACGGAGCGGAGCGGATCAGGAGAA
 GGCAGAACGGGGAGAGGGCGCGAGTCGGAGCCCCGGGAGTGCTAAGAGATGGAGGGCAGCAGGAGCCT
 GGGACTCGGGAGCGGGACCCGGACAAAGCCACCCGCTTCCGGATGGAGGAGCTGAGACTGACCAGACCA
 CGTTTGGCTGACGGGAGACTCAGCACACAACCAAGCCATGGTCCACTGGTCTGGCCACAACAGCAGCGT
 GATTCTCATTTTGACAAAGCTCTATGACTATAACCTGGGAGCATCACAGAGAGCTCGCTTTGGAGGTCA
 ACCGATTATGGAACAACCTATGAGAAGCTGAATGATAAAGTTGGTTTGAACCATTGAGCTATCTCT
 ATGTGTCTACCAACAAGCGTAAGATAATGTTACTCACAGACCCGGAGATTGAGAGCAGTTTATTGAT
 CAGCTCAGATGAAGGGGCAACTTATCAAAGTACCGCTGAACTTCTACATTCAAAGCTTGCTTTTTCAC
 CCCAAACAAGAAGACTGGATTCTGGCATACAGTCAAGACCAAAAGTTATACAGCTGCTGAATTTGGGA
 GAAGATGGCAGCTTATCCAAGAAGGGTGTACCAAACAGGTTCTACTGGTCTGTGATGGGGTCAAATAA
 AGAACCGACCTTGTGCATCTTGGAGCCAGAAGTGGATGGTCACTTACATTATCTAAGTGGCGAATG
 CAGAACTGTACAGAGGCCAACAGGAATCAGCCTTTCCAGGCTACATTGACCCAGACTCTTTGATTGTT
 AGGATCATTATGTGTTTGTTCAGCTGACATCAGGAGGGCGCCACATTACTACGTGCTCCTACCGAAGGAA
 TGCATTTGCCAAATGAAGCTTCCGAAATATGCTTTGCCAAGGACATGCATGTTATCAGACCCGATGAG
 AATCAGGTGTTCCGACGGTCCAAGAATGGAACCAAGATGACACGTACAACCTCTACATCTCAGACACAC
 GTGGTGTCTACTTCAACCCTGGCCTTGAGAATGTCCAGAGCAGCAGAGGCCCTGAGGGCAACATCATGAT
 CGACCTCTATGAGGTAGCAGGATAAAGGAATGTTCTTGGCTAACAGAAGATTGACAACCAAGTGAAG



[View online »](#)

ACTTTCATCACATATAACAAAGGCAGAGACTGGCGTTTGTCTGCAGGCGCCGGACACGGATCTAAGGGGG
ACCCCGTGCAGTCTTGTGCTGCCCTATTGCTCACTACACCTTACCTGAAGGTCTCTGAGAATCCCTACAC
ATCAGGGATCATTGCCAGCAAAGACACAGCTCCAAGCATCATAGTGGCATCAGGTAATATAGGTTCTGAA
TTGTGACACACTGACATCAGCATGTTTGTCTCTCAGATGCAGGGAACACCTGGAGACAGATCTTTGAAG
AAGAGCACAGTGTGGTACCTGGATCAAGGTGGAGTCTGGTTGCTATGAAACACACATCTCTCCCAAT
TCGACATCTTTGGTTGAGTTTTGATGAAGGGAGATCTTGGAGCAAATACAGTTTACATCTATTCCACTT
TTTGTGGATGGGTTCTGGGTGAGCCTGGAGAAGAGACTCTCATCATGACAGTGTGGACACTTCAGCC
ACCGCTCTGAATGGCAGCTGGTCAAAGTAGATTACAAGTCCATTTTTGATAGACGGTGTGCCGAAGAGGA
CTACAGACCTTGGCAGCTGCACAGCCAGGGGAAGCATGTATCATGGGAGCAAAAAGGATATATAAGAAG
CGAAAATCAGAGCGGAAGTGATGCAAGGAAAATATGCAGGAGCTATGGAATCTGAACCTGTGTCTGCA
CTGAGGCTGATTTTATTGCGACTATGGTTATGAGCGACACAGCAATGGCCAGTGCCTGCCGGCATTG
GTTCAATCCATCTCTGTCAAAGATTGCAGCTTGGGACAGAGTTACCTCAATAGTACTGGGTACAGG
AAGGTGGTTTCCAATAATTGCAGTGTGGCGTAAGGGAACAGTACACTGCCAAACCGAGAAGTGCCAG
GGAAAGCCCCGCGGGGCTGCGGATAGTACGGCTGATGGAAAGCTGACAGCGGAACAAGGACACAACGT
CACTCTCATGGTCAATTAGAAGAGGGTATGTTCAAGCGACACTCATCAAGTGGACTTTGGCGATGGT
ATCGCGGTGTCTTACGTCATCTCAGCTCCATGGAAGATGGGATCAAACAGTCTATCAGAACGTGGGCA
TTTTCCGTGTGACCGTGCAGGTGGACAACAGTCTGGGTTCTGACAGCGCCGTCTGTACTTACATGTAAC
TTGTCCCTTGGAGCAGTGCACCTGTCTTCCCTTTGTCAACCACAAAGAACAAAGAGGTCAATGCGACG
GCAGTGTGTGGCCAGCCAAGTGGGCACCCTCACTTACGTGTGGTGGTACGGAAACAACACGGAGCCTT
TGATCACCTTGGAGGGAAGCATATCCTTCAGATTTACTTCAGAAGGAATGAATACCATCACAGTGCAGGT
CTCAGCTGGGAATGCCATCCTACAAGACACAAAGACCATCGCAGTATATGAGGAATTCGGTCTCTTCGC
TTGTCTTTTCTCAAACCTGGATGACTACAACCCGGACATCCCTGAGTGGAGGAGGACATCGGTGAG
TCATCAAAAAATCCCTGGTGAAGCCACAGGGTTCCAGGCCAGCACATCCTGGTGGCGGTGCTCCCTGG
CTTACCCACCACTGCTGAACTCTTGTCTTACCCTATCAGGATCCAGCTGGAGAAAAACAAAGGTCAACT
GATGACCTGGAGCAGATATCAGAATTGCTGATCCACACGCTCAACCAAAACACTCAGTACACTTCGAGCTGA
AGCCAGGAGTCCGAGTCTTGTCCATGCTGCTCACTTAACAGCGGCCCCCTGGTGGACCTCACTCCAAC
CCACAGTGGATCTGCCATGCTGATGCTGCTCAGTGGTGTGTTGGGGCTGGCAGTGTTCGTCATCTAC
AAGTTTAAAGGAAGATCCCGGGATTAATGTTTATGCCAGATGCAGAATGAGAAAGAACAAGAGATGA
TCAGTCCAGTCACTCTGAAAGCAGGCCAATGTCCCTCAGACTGAACCTAAGGAGGCCTGGCCAGCT
TATAGATGAGAAGGTGGAATCCAGCTCATAGGTTAA

ACGCGTACGCGGCCGCTCGAGCAGAAACTCATCTCAGAAGAGGATCTGGCAGCAAATGATATCCTGGATT
ACAAGGATGACGACGATAAGGTTTAA

Protein Sequence: >RC235206 representing NM_001206569
 Red=Cloning site Green=Tags(s)

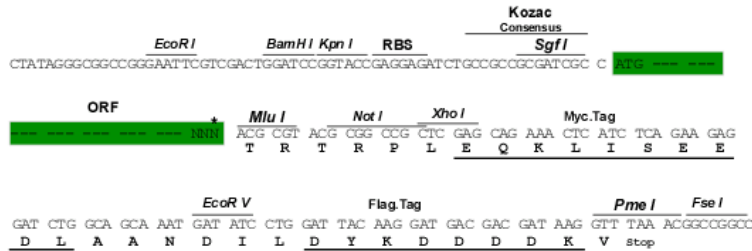
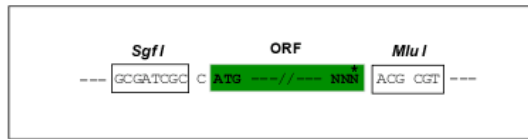
```

MGKVGAGGGSQARLSALLAGAGLLILCAPGVCGGGSCCPSHPSSAPRSASTPRGFHQGRPGRAPATPL
PLVVRPLFSVAPGDRALSLEARGTGASMAVAARSGRRRRSGADQEKAEREGEGASRSPRGVLRDGGQQEP
GTRERDPDKATRFMEELRLTSTTFALTGDSAHNQAMVHWSGHNSSVILILTKLYDYNLGSITESSLWRS
TDYGTTYEKLNDKVGLKILSYLYVCPTNKRKIMLLTDPEIESSLLISSDEGATYQKYRLNFYIQSLLFH
PKQEDWILAYSQDQKLYSSAEFGRRWQLIQEGVVPNRFYWSVMGSNKEPDLVHLEARTVDGHSHYLTCRM
QNCTEANRNQPPPGYIDPDSLIVQDHYVQVQLTSGGRPHYVVSYRRNAFAQMCLKPKYALPKDMHVI
STDENQVFAAVQEWNQNDTYNLYISDTRGVYFTLALENVQSSRGPEGNIMIDLVEVAGIKGMFLANKKIDN
QVKTFITYNKGRDWRLQAPDIDLGRDPVHCLLPYCSLHLHLKVSENPYTSGIASKDTAPSIIVASGNIGSE
LSDTDISMVSSDAGNTWRQIFEEHSLVYLDQGGVLVAMKHTSLPIRHLWLSFDEGRSWSKYSFTSIPL
FVDGVLGEPGEETLIMTVFGHFHRSEWQLVKVDYKSIFFDRCAEEDYRPWQLHSQGEACIMGAKRIYKK
RKSERKCMQKYGAMESEPCVCTEADFDCDYGERHSNGQCLPAFWFNPSSLKDCSLGQSYLNSTGYR
KVVSNNCTDGVREQYTAQPQKCPGKAPRGLRIVTADGKLTAEQGHNVTLMVQLEEGDVQRTLIQVDFGDG
IAVSYVNLSSMEDGIKHYQNVGIFRVTVQVDNSLGSDSAVALYLHVTCPLEHVHLSLPFVTTKNKEVNAT
AVLWPSQVGTLYVWYGNTEPLITLEGSISFRFTSEGMENTITVQVSAGNAILQDQTKTIAVYEEFRSLR
LSFSPNLDDYNDIPEWRRDIGRVIKSLVEATGVPQGHILVAVLPGLPTTAELFVLPYQDPAGENKRST
DDLEQISELLIHTLNQNSVHFLKPGVRVLVHAAHLTAAPLVDLTPTHSGSAMLMLLSVVFVGLAVFVIY
KFKRKIPGINVYAQMNEKEQEMISPVSHSES RPNVPQTELRPQGLIDEKVESQLIGK
  
```

TRTRPLEQKLISEEDLAANDILDYKDDDDKV

Restriction Sites: SgfI-MluI
Cloning Scheme:

Cloning sites used for ORF Shuttling:



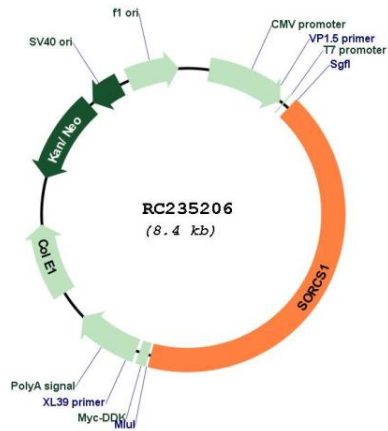
* The last codon before the Stop codon of the ORF

ACCN: NM_001206569

ORF Size: 3537 bp

OTI Disclaimer:	The molecular sequence of this clone aligns with the gene accession number as a point of reference only. However, individual transcript sequences of the same gene can differ through naturally occurring variations (e.g. polymorphisms), each with its own valid existence. This clone is substantially in agreement with the reference, but a complete review of all prevailing variants is recommended prior to use. More info
OTI Annotation:	This clone was engineered to express the complete ORF with an expression tag. Expression varies depending on the nature of the gene.
Components:	The ORF clone is ion-exchange column purified and shipped in a 2D barcoded Matrix tube containing 10ug of transfection-ready, dried plasmid DNA (reconstitute with 100 ul of water).
Reconstitution Method:	<ol style="list-style-type: none">1. Centrifuge at 5,000xg for 5min.2. Carefully open the tube and add 100ul of sterile water to dissolve the DNA.3. Close the tube and incubate for 10 minutes at room temperature.4. Briefly vortex the tube and then do a quick spin (less than 5000xg) to concentrate the liquid at the bottom.5. Store the suspended plasmid at -20°C. The DNA is stable for at least one year from date of shipping when stored at -20°C.
RefSeq:	NM_001206569.2
RefSeq Size:	4142 bp
RefSeq ORF:	3540 bp
Locus ID:	114815
UniProt ID:	Q8WY21
Cytogenetics:	10q25.1
Protein Families:	Druggable Genome, Transmembrane
MW:	131.8 kDa
Gene Summary:	<p>This gene encodes one family member of vacuolar protein sorting 10 (VPS10) domain-containing receptor proteins. The VPS10 domain name comes from the yeast carboxypeptidase Y sorting receptor Vps10 protein. Members of this gene family are large with many exons but the CDS lengths are usually less than 3700 nt. Very large introns typically separate the exons encoding the VPS10 domain; the remaining exons are separated by much smaller-sized introns. These genes are strongly expressed in the central nervous system. Two of the five family members (sortilin and sortilin-related receptor) are synthesized as preproteins; it is not yet known if this encoded protein is also a preproprotein. Alternatively spliced transcript variants encoding different isoforms have been identified. [provided by RefSeq, Jul 2008]</p>

Product images:



Circular map for RC235206