

Product datasheet for **RC235204**

MYBPC1 (NM_001254718) Human Tagged ORF Clone

Product data:

Product Type: Expression Plasmids
Product Name: MYBPC1 (NM_001254718) Human Tagged ORF Clone
Tag: Myc-DDK
Symbol: MYBPC1
Synonyms: LCCS4; MYBPCC; MYBPCS; MYOTREM; ssMyBP-C
Vector: pCMV6-Entry (PS100001)
E. coli Selection: Kanamycin (25 ug/mL)
Cell Selection: Neomycin
ORF Nucleotide Sequence: >RC235204 representing NM_001254718
Red=Cloning site Blue=ORF Green=Tags(s)

TTTTGTAATACGACTCACTATAGGGCGCCGGGAATTCGTCGACTGGATCCGGTACCGAGGAGATCTGCC
GCC**CGGATCGCC**

ATGCCAGAACCCTAAGAAAGAGGAAAATGAAGTGCCAGCCCCAGCCCCACCCCGGAAGAACCAAGTA
AAGAGAAGGAGGCCGGAACCTACACCAGCAAAGACTGGACCCCTTGTGAAACTCCTCTGGGGAGGAACA
AGCCAAGCAGAATGCCAACTCCAGCTGTCCATCTTGTTCATTGAAAACTCAAGGAGGAACAGTGAAA
GTTGGTGAAGATACACCTTCATAGCCAAAGTCAAGGCTGAAGATCTTCTGAGAAAACCCACTATCAAA
GGTTCAAAGGAAAATGGATGGACCTGGCCAGCAAAGCCGGGAAGCACCTTCAGCTGAAGGAAACCTTTGA
GAGGCACAGTCGGGTGTACACATTTGAGATGCAGATCATCAAGGCCAAAGATAACTTTGCAGGAAATTAC
AGATGCGAGGTCACCTATAAGGATAAGTTTGACAGCTGTTTCAATTTGATCTTGAAGTGCACGAATCTACTG
GGACTACTCCAAACATTGACATCAGATCTGCTTCAAGAGAAGTGGAGAAGTCAAGAGGATGCAGGAGA
ACTTGACTTTAGTGGTCTCCTGAAACGTAGGGAGGTGAAGCAGCAGGAGGAAGAACCCAGGTGGACGTA
TGGGAGTTGCTGAAGAACGCGAAACCCAGTGAAGTACGAGAAGATCGCCTCCAGTATGGAATCACCGACC
TGCCGCGCATGCTCAAGCGACTCAAGCGCATGCCAGAGAGGAGAAGAAGAGCGCAGCTTTTGCAAAAAT
TCTTGATCCTGCATATCAGGTTGACAAAGGAGGCAGAGTGAAGTTTGTGTGGAGCTGGCAGATCCAAAG
TTGGAGGTGAAATGGTATAAAAAATGGTCAAGAAATTCGACCCAGTACCAATACATCTTTGAACACAAAG
GATGCCAGAGAATCCTGTTTATCAATAACTGTCAGATGACAGATGATTGAGAGTATTATGTGACAGCCGG
TGATGAGAAATGTTCCACTGAGCTCTTCGTAAGAGAGCCTCCAATTATGGTGACCAAACAGCTGGAAGAT
ACAACCTGCTTATTGTGGGAGAGAGTGAATAGAAATGTGAGGTGTCTGAAGATGATGCCAATGTAAAAT
GGTTTAAGAAATGGTGAAGAGATTATCCCTGGTCCAAAATCAAGATACCGAATTAGAGTTGAGGGTAAAA
ACACATCTTGATCATAGAGGGAGCAACAAAGGCTGATGCTGCAGAATATTCAGTAATGACAACAGGAGGA
CAATCATCTGCTAACTTGTGTTGACTTGAAACCTCTGAAGATTTTGCACCTCTGACTGATCAGACTG
TAAATCTTGAAAAGAAAATCTGCCTGAAGTGTGAAATCTCTGAAAACATACCAGGAAAATGGACTAAAA
TGGCCTACCTGTTTCAAGGAGTGAACCTGCTAAAGTGGTTCAAGGGAAGGATCCACAAGTTAGTGATA
GCCAATGCCCTCACTGAAGATGAAGGTGATTATGTATTTGCACCTGATGCCTACAATGTTACTCTGCCTG



[View online >](#)

CCAAAGTTCATGTTATTGATCCTCCTAAGATCATCCTGGATGGTCTTGATGCTGACAACACAGTGACAGT
GATTGCAGGAAACAAGCTTCGTCTTGAGATCCCCATCAGCGGAGAACCACCTCCTAAAGCCATGTGGAGC
CGGGGAGATAAGGCTATTATGGAAGGCAGTGGCCGGATAAGAACAAGAATCTTACCCTGATAGCAGCACTC
TGGTCATTGATATAGCTGAAAGAGATGACTCTGGTGTTTACCACATCAATCTGAAAAACGAAGCTGGAGA
GGCACATGCAAGCATCAAGGTTAAAGTTGTGGACTCCCTGATCCTCCAGTGGCACCAGCTGTGACAGAG
GTGGGAGATGACTGGTGTATCATGAAGTGGGAGCCTCCTGCCTACGACGGAGGCTCTCCAATCCTAGGAT
ATTTTATTGAGAGGAAGAAGAAACAAGCTCCAGGTGGATGAGGCTGAATTTTGATCTCTGCAAAGAAAC
AACTTTTGAGCCCAAGAAGATGATTGAAGGTGTGGCCTATGAGGTCCGCATCTTTGCAGTCAATGCCATT
GGCATCTCCAAGCCAGTATGCCCTCCAGGCTTTTGTTCCTTTGGCTGTAACAAGCCCTCCTACTCTTC
TGACTGTGGACTCTGTCACTGACACGACTGTCACGATGAGGTGGCGCCCCCAGACCACATTGGTGCAGC
AGGTTTAGATGGCTATGTGCTAGAGTATTGCTTTGAAGGAAGTACATCAGCAAAACAGTCTGATGAAAAT
GGGAGGCTGCCTATGATCTGCCAGCTGAGGACTGGATAGTTGCAAAACAAGATCTGATTGACAAGACGA
AGTTCACCATCACAGGTCTGCCAACAGATGCAAAGATCTTTGTGCGTGTGAAGGCTGTTAATGCAGCTGG
TGCCAGCGAGCCCAAGTACTATTCTCAGCCATTCTCGTGAAGGAAATCATAGAACCTCCAAGATTCCG
ATTCAAAGACACCTGAAGCAAACCTATATCCGCAGAGTTGGAGAAGCTGTCAATCTGGTTATACCTTTCC
AGGGAAAACCAAGACCAGAATTAACCTGGAAGAAGGATGGTGCAGAAATTGATAAGAATCAAATAACAT
TCGCAACTCTGAGACTGATACAATCATATTTATTAGAAAAGCAGAGAGGACCACTCTGGGAAATATGAT
CTGCAAGTCAAAGTGACAAAATTCGTGGAGACCGCATCAATTGACATCCAGATCATTGACCGTCCAGGTC
CACCCCAAATTTGTGAAGATTGAGGATGTCTGGGGAGAAAATGTCGCTCTCACATGGACTCCACCAAAGGA
TGATGGAAATGCTGCTATCACAGGCTATACCATTCAGAAGGCTGACAAGAAGAGCATGGAATGGTTTACT
GTCATTGAGCATTATCATCGAACCAGTGCCACCATTACTGAATTGGTCATAGGGAATGAATATTACTTCC
GGGTCTTTCTGAAAACATGTGTGGCCTCAGTGAGGATGCCACCATGACTAAAGAGAGTGCAGTGCATCGC
CAGGGATGGTAAAATCTACAAAAATCCAGTGTATGAAGACTTTGATTTCTCAGAGGCACCCATGTTTACT
CAGCCTTTGGTTAACACCTATGCCATAGCTGGTTACAATGCCACCCTAACTGCAGTGTGAGAGGAAATC
CTAAGCCTAAAATAACCTGGATGAAAAACAAGTTGCTATTGTGGATGATCCAAGATACAGGATGTTTCAG
CAACCAGGGAGTCTGTACCCTGGAAATTCGAAGCCAGCCCTATGATGGAGGCACTTACTGCTGCAAA
GCAGTCAATGACCTTGGGACAGTGGAGATTGAATGCAAACCTGGAGGTGAAAGTGATATATCAAGGAGTAA
ATACCCCTGGACAACCAGTCTTCTGGAGGGGCAGCAACAGGTGGGCTCTCCTTCTGCAGACTCCTCTTG
CAAGGCGTACCTCAAACA

ACGCGTACGCGGCCGCTCGAGCAGAACTCATCTCAGAAGAGGATCTGGCAGCAAATGATATCCTGGATT
ACAAGGATGACGACGATAAGGTTTAA

Protein Sequence: >RC235204 representing NM_001254718

Red=Cloning site Green=Tags(s)

MPEPTKKEENEVPAPAPPPPEEPSKEKEAGTTPAKDWTLVETPPGEEQAKQNSQLSILFIEKPQGGTVK
 VGEDITFIAKVAEDLLRKPTIKWFKGKWMDSLASKAGKHLQLKETFERHSRVYTFEMQIIKAKDNFAGNY
 RCEVYTKDKDFDSCSFDELVHSTGTTPNIDIRSAFKRSRSGEGQEDAGELDFSGLLKRREVKQEEEPQVDV
 WELLKNAKPSEYEKIAFYQGITDLRGLMLKRLKMRREKKSAAFKILDPAYQVDKGGVRVVELADPK
 LEVKWYKNGQEIRPSTKYIFEHKGQRILFINNCQMTDDSEYVYTAGDEKSTELFVREPPIMVTKQLED
 TTAYCGERVELECEVSEDDANVVKWFKNGEEIIPGPKSRYRIRVEGKKHILIEGATKADAAEYSVMTTGG
 QSSAKLSVDLPLKILTPLTDQTVNLGKEICLKCEISENIPGKWTKNGLPVQESDRLKVVHKGRIHKLVI
 ANALTEDEGDYVFPDAYNVTLPKVVHIDPPKIILDGLDADNTVTVIAGNKLRIEIPISGEPKKAMWS
 RGDKAIMEGSGRIRTESYPDSSTLVIDIAERDDSGVYHINLKNEAGEAHASIKVKVVDFPDPVAPTVE
 VGDDWCIMNWEPAYDGGSPILGYFIERKKKQSSRWMLNFDLCKETTFEPKMIQEVAVRIFAVNAI
 GISKSPMSRPFVPLAVTSPPTLLTVDSVTDTTVTMRWRPPDHIGAAGLDGYVLEYCFEGSTSAKQSDEN
 GEAAYDLPAEDWIYANKDLIDKTKFTITGLPTDAKIFVVRKAVNAAGASEPKYYSPILVKEIIEPPKIR
 IPRHLKQTYIRRVGEAVNLVIPFQKGPRPELTWKKDGAIEDKNQINIRNSETDTIIFIRKAERSHSGKYD
 LQVKVDFVETASIDIQIIDRPGPPQIVKIEDVWGENVALTWTPPKDDGNAAITGYTIQKADKKSMEWFT
 VIEHYHRTSATITELVIGNEYFRVFSNMCGLSAEDATMTKESAVIARDGKIYKNPVYEDFDFSEAMPFT
 QPLVNTYAIAAGYNATLNCVSRGNPKPKITWMKNVAIVDDPRYRMSNQGVCLEIRKPSPYDGGTYCK
 AVNDLGTVEIECKLEVKVIYQGVNTPGQPVFLEGGQVGSADSSCKAYLQT

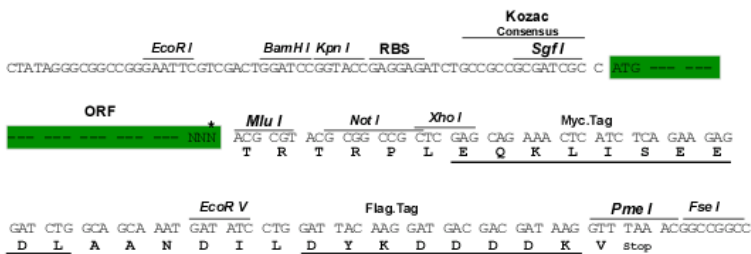
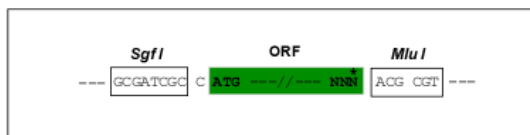
TRTRPLEQKLISEEDLAANDILDYKDDDDKV

Restriction Sites:

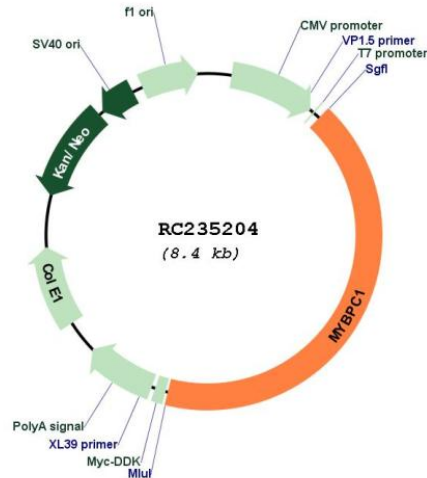
Sgfl-MluI

Cloning Scheme:

Cloning sites used for ORF Shuttling:



* The last codon before the Stop codon of the ORF

Plasmid Map:


ACCN: NM_001254718

ORF Size: 3519 bp

OTI Disclaimer: The molecular sequence of this clone aligns with the gene accession number as a point of reference only. However, individual transcript sequences of the same gene can differ through naturally occurring variations (e.g. polymorphisms), each with its own valid existence. This clone is substantially in agreement with the reference, but a complete review of all prevailing variants is recommended prior to use. [More info](#)

OTI Annotation: This clone was engineered to express the complete ORF with an expression tag. Expression varies depending on the nature of the gene.

Components: The ORF clone is ion-exchange column purified and shipped in a 2D barcoded Matrix tube containing 10ug of transfection-ready, dried plasmid DNA (reconstitute with 100 ul of water).

Reconstitution Method:

1. Centrifuge at 5,000xg for 5min.
2. Carefully open the tube and add 100ul of sterile water to dissolve the DNA.
3. Close the tube and incubate for 10 minutes at room temperature.
4. Briefly vortex the tube and then do a quick spin (less than 5000xg) to concentrate the liquid at the bottom.
5. Store the suspended plasmid at -20°C. The DNA is stable for at least one year from date of shipping when stored at -20°C.

RefSeq: [NM_001254718.1](#), [NP_001241647.1](#)

RefSeq Size: 3930 bp

RefSeq ORF: 3522 bp

Locus ID: 4604

UniProt ID: [Q00872](#)

Cytogenetics: 12q23.2

MW: 132.1 kDa

Gene Summary: This gene encodes a member of the myosin-binding protein C family. Myosin-binding protein C family members are myosin-associated proteins found in the cross-bridge-bearing zone (C region) of A bands in striated muscle. The encoded protein is the slow skeletal muscle isoform of myosin-binding protein C and plays an important role in muscle contraction by recruiting muscle-type creatine kinase to myosin filaments. Mutations in this gene are associated with distal arthrogryposis type I. Alternatively spliced transcript variants encoding multiple isoforms have been observed for this gene. [provided by RefSeq, Dec 2011]