

Product datasheet for RC235182

MYBPC1 (NM_001254720) Human Tagged ORF Clone

Product data:

Product Type:	Expression Plasmids
Product Name:	MYBPC1 (NM_001254720) Human Tagged ORF Clone
Tag:	Myc-DDK
Symbol:	MYBPC1
Synonyms:	LCCS4; MYBPCC; MYBPCS; MYOTREM; ssMyBP-C
Vector:	pCMV6-Entry (PS100001)
E. coli Selection:	Kanamycin (25 ug/mL)
Cell Selection:	Neomycin
ORF Nucleotide Sequence:	>RC235182 representing NM_001254720 Red=Cloning site Blue=ORF Green=Tags(s)

TTTTGTAATACGACTCACTATAGGGCGCCGGAATTCGTCGACTGGATCCGGTACCGAGGAGATCTGCC
GCC**CGGATCGCC**

ATGCCAGAACCCTAAGAAAGAGGAACCAAGTAAAGAGAAGGAGGCCGGAACACACCAGCAAAGACT
GGACCTTGTGCGAACTCCTCTGGGGAGGAACAAGCCAAGCAGAATGCCAACTCCAGCTGTCCATCTT
GTTTCATTGAAAACTCAAGGAGGAACAGTGAAAGTTGGTGAAGATATCACCTTCATAGCCAAAGTCAAG
GCTGAAGATCTTCTGAGAAAACCCACTATCAAATGGTTCAAAGGAAAATGGATGGACCTGGCCAGCAAAG
CCGGGAAGCACCTTCAGCTGAAGGAAACCTTTGAGAGGCACAGTCGGGTGTACACATTTGAGATGCAGAT
CATCAAGGCCAAAGATAACTTTGCAGGAAATTACAGATGCGAGGTCACCTATAAGGATAAGTTTGACAGC
TGTTTCATTTGATCTTGAAGTGCACGAATCTACTGGGACTACTCCAACATTGACATCAGATCTGCTTTCA
AGAGAAGTGGAGAAGGTCAAGAGGATGCAGGAGAACTTGACTTTAGTGGTCTCCTGAAACGTAGGGAGGT
GAAGCAGCAGGAGGAAGAACCCAGGTGGACGTATGGGAGTTGCTGAAGAACGCGAAACCCAGTGAGTAC
GAGAAGATCGCCTCCAGTATGGAATCACCGACCTGCGCGCATGCTCAAGCGACTCAAGCGCATGCGCA
GAGAGGAGAAGAAGAGCGCAGCTTTTGCAAAAATCTTGATCCTGCATATCAGTTGACAAGAGGAGCAG
AGTGAGGTTTGTGGAGCTGGCAGATCCAAAGTTGGAGGTGAAATGGTATAAAAATGGTCAAGAAATT
CGACCCAGTACCAAATACATCTTTGAACACAAAGGATGCCAGAGAATCCTGTTTATCAATAACTGTCAGA
TGACAGATGATTCAGAGTATTATGTGACAGCCGGTGTGAGAAATGTTCCACTGAGCTCTTCGTAAGAGA
GCCTCCAATTATGGTGACCAAACAGCTGGAAGATACAACTGCTTATTGTGGGGAGAGTGGAAATTAGAA
TGTGAGGTGTCTGAAGATGATGCCAATGTAATAAGTTTAAAGATGGTGAAGAGATTATCCCTGGTCCAA
AATCAAGATACCGAATTAGAGTTGAGGGTAAAAACACATCTTGATCATAGAGGGAGCAACAAAGGCTGA
TGCTGCAGAATATTCAGTAATGACAACAGGAGGACAATCATCTGCTAACTTAGTGTGACTTGAAACCT
CTGAAGATTTTGACACCTCTGACTGATCAGACTGTAATCTTGAAAAGAAATCTGCCTGAAGTGTGAAA
TCTCTGAAAACATACCAGGAAAATGACTAAAAATGGCCTACCTGTTGAGGAGAGTGACCGTCTAAAGGT
GGTTCACAAGGGAAGGATCCACAAGTTAGTGATAGCCAATGCCCTCACTGAAGATGAAGGTGATTATGTA
TTTGACCTGATGCCTACAATGTTACTCTGCCTGCCAAAGTTCATGTTATTGATCCTCCTAAGATCATCC



TGGATGGTCTTGATGCTGACAACACAGTGACAGTGATTGCAGGAAACAAGCTTCGTCTTGAGATCCCCAT
 CAGCGGAGAACCACCTCCTAAAGCCATGTGGAGCCGGGGAGATAAGGCTATTATGGAAGGCAGTGGCCGG
 ATAAGAACAGAATCTTACCCTGATAGCAGCACTCTGGTCATTGATATAGCTGAAAGAGATGACTCTGGTG
 TTTACCACATCAATCTGAAAAACGAAGCTGGAGAGGCACATGCAAGCATCAAGGTTAAAGTTGTGGACTT
 CCCTGATCCTCCAGTGGCACCAGCTGTGACAGAGGTGGGAGATGACTGGTGTATCATGAAGTGGGAGCCT
 CCTGCCTACGACGGAGGCTCTCCAATCCTAGGATATTTTATTGAGAGGAAGAAGAACAAGCTCCAGGT
 GGATGAGGCTGAATTTTGTCTGCAAAAGAAACAACCTTTTGGCCCAAGAAGATGATTGAAGTGTGGC
 CTATGAGGTCCGCATCTTTGCAGTCAATGCCATTGGCATCTCAAGCCCAGTATGCCCTCCAGGCCTTTT
 GTTCCTTTGGCTGTAACAAGCCCTCTACTCTTCTGACTGTGGACTCTGTCACTGACACGACTGTACGGA
 TGAGGTGGCGCCCCCAGACCACATTGGTGCAGCAGGTTTAGATGGCTATGTGCTAGAGTATTGCTTTGA
 AGGAACTGAGGACTGGATAGTTGCAAAACAAGATCTGATTGACAAGACGAAGTTCACCATCACAGGTCTG
 CCAACAGATGCAAAGATCTTTGTGCGTGTGAAGGCTGTTAATGCAGCTGGTGCCAGCGAGCCCAAGTACT
 ATTCTCAGCCATTCTCGTGAAGGAAATCATAGAACCTCAAAGATTTCGATTCCAAGACACCTGAAGCA
 AACCTATATCCGAGAGTTGGAGAAGCTGTCAATCTGGTTATACCTTTCCAGGGAAAACCAAGACCAGAA
 TTAACCTTGAAGAAGGATGGTGCAGAAATGATAAGAATCAAATAAACATTTCGCAACTCTGAGACTGATA
 CAATCATATTTATTAGAAAAGCAGAGAGAGGCCACTCTGGGAAATATGATCTGCAAGTCAAAGTGGACAA
 ATTCGTGGAGACCGCATCAATTGACATCCAGATCATTGACCGTCCAGGTCCACCCCAAATTTGTGAAGATT
 GAGGATGTCTGGGGAGAAAATGTGCTCTCACATGGACTCCACCAAAGGATGATGGAAATGCTGCTATCA
 CAGGCTATACCATTGAGAAGGCTGACAAGAAGAGCATGGAATGGTTTACTGTCAATTGAGCATTATCATCG
 AACCAGTGCCACCATTACTGAATGGTCATAGGGAATGAATATTACTCCGGGTCTTTTCTGAAAACATG
 TGTGGCCTCAGTGGATGCCACCATGACTAAAGAGAGTGCAGTATCGCCAGGGATGGTAAAATCTACA
 AAAATCCAGTGTATGAAGACTTTGATTTCTCAGAGGCACCCATGTTTACTCAGCCTTTGGTTAACACCTA
 TGCCATAGCTGGTTACAATGCCACCCTAACTGCAGTGTGAGAGGAAATCCTAAGCCTAAAATAACCTGG
 ATGAAAAACAAGTTGCTATTGTGGATGATCCAAGATACAGGATGTTTCCAGCAACCCAGGGAGTCTGTACCC
 TGGAAATTCGCAAGCCCAGCCCTATGATGGAGGCACTTACTGTGCAAAAGCAGTCAATGACCTTGGGAC
 AGTGGAGATTGAATGCAAAGTGGAGGTGAAAGTATATCAAGGAGTAAATACCCTGGACAACCCAGTC
 TTCCTGGAGGGGCAGCAACAGTCATTGCACAATAAGGATTTT

ACGCGTACGCGGCCGCTCGAGCAGAAACTCATCTCAGAAGAGGATCTGGCAGCAAATGATATCCTGGATT
 ACAAGGATGACGACGATAAGGTTTAA

Protein Sequence:

>RC235182 representing NM_001254720
 Red=Cloning site Green=Tags(s)

MPEPTKKEEPSKEKEAGTTPAKDWTLVETPPGEEQAKQNANSQLSILFIEKPQGGTVKVGEDITFIKVK
 AEDLLRKPTIKWFKGKWMDLASKAGKHLQLKETFERHSRVYTFEMQIIKAKDNFAGNYRCEVYTKDFDS
 CSFDLEVHSTGTPNIDIRSAFKRSGEGQEDAGELDFSGLLKRREVKQEEEPQVDVWELLKNAKPSEY
 EKIAFYQGITDLRGMKRLKRMREEKSAFAKILDPAYQVDKGRVRFVVELADPKLEVWKYKNGQEI
 RPSTKYIFEHKGQRILFINNCQMTDDSEYVYTAGDEKSTELFVREPPIMVTKQLEDTTAYCGERVELE
 CEVSEDDANVKWFKNGEEIIPGPKSRYRIRVEGKHHILIEGATKADAAEYSVMTTGGQSSAKLSVDLKP
 LKILTPLTDQTVNLGKEICLKCEISENIPGKWTKNGLPVQESDRLKVVHKGRIHKLIVIANALTEDEGDYV
 FAPDAYNVTLPKAVHVIDPPKIIILDGLDADNTVTVIAGNKLRLIPIISGEPKAMWSRGDKAIMESGR
 IRTESYDSSSTLVIDIAERDDSGVYHINLKNEAGEAHASIKVKVDFPDPVAVPTVEVGDWIMNWP
 PAYDGGSPILGYFIERKKKQSSRWMLNFDLCKETTFEPKMIIEGVAYEVRIFAVNAIGISKPSMPSRPF
 VPLAVTSPPTLLTVDSVTDTTVMRWRPPDHIGAAGLDGYVLEYCFEGTEDWIVANKDLIDTKFTITGL
 PTDAKIFVRVKAVNAAGASEPKYYSQPILVKEIEPPKIRIPRHLKQTYIRRVGEAVNLVIPFQKPRPE
 LTWKKDGAIEDKNQINIRNSETDTIIFIRKAERSHSGKYDLQVKVDFVETASIDIQIIDRPGPPQIVKI
 EDVWGENVALTWTTPKDDGNAAITGYTIQKADKSMWFVIEHYHRTSATITELVIGNEYFRVFSNM
 CGLSEDATMTKESAVIARDGKIYKNPVYEDDFSEAPMFTQPLVNTYAIAGYNATLNCSVRGNPKPKITW
 MKNKVAIVDDPRYRMFSNQGVCTLEIRKPSPYDGGTYCCKAVNDLGTVEIECKLEVKVIYQGVNTPGQP
 FLEGQQQLSHNKDF

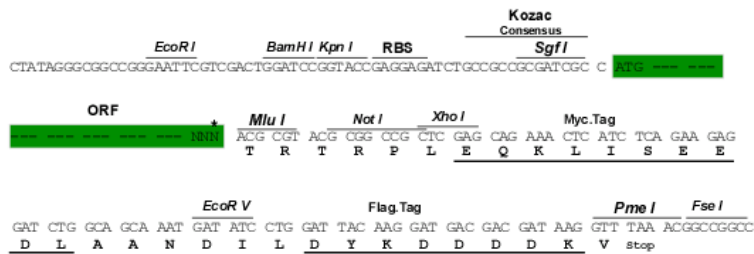
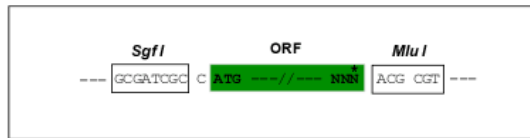
TRTRPLEQKLI SEEDLAANDILDYKDDDDKV

Restriction Sites:

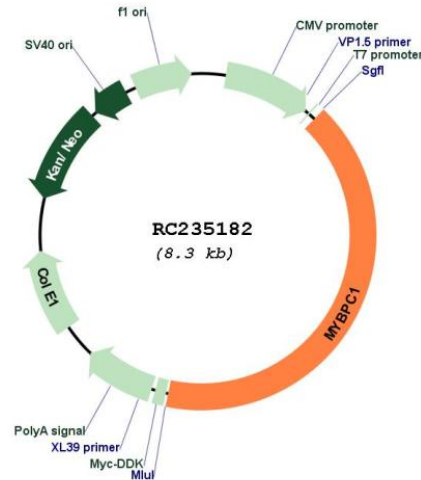
SgfI-MluI

Cloning Scheme:

Cloning sites used for ORF Shuttling:



* The last codon before the Stop codon of the ORF

Plasmid Map:


ACCN: NM_001254720

ORF Size: 3402 bp

OTI Disclaimer: The molecular sequence of this clone aligns with the gene accession number as a point of reference only. However, individual transcript sequences of the same gene can differ through naturally occurring variations (e.g. polymorphisms), each with its own valid existence. This clone is substantially in agreement with the reference, but a complete review of all prevailing variants is recommended prior to use. [More info](#)

OTI Annotation: This clone was engineered to express the complete ORF with an expression tag. Expression varies depending on the nature of the gene.

Components: The ORF clone is ion-exchange column purified and shipped in a 2D barcoded Matrix tube containing 10ug of transfection-ready, dried plasmid DNA (reconstitute with 100 ul of water).

Reconstitution Method:

1. Centrifuge at 5,000xg for 5min.
2. Carefully open the tube and add 100ul of sterile water to dissolve the DNA.
3. Close the tube and incubate for 10 minutes at room temperature.
4. Briefly vortex the tube and then do a quick spin (less than 5000xg) to concentrate the liquid at the bottom.
5. Store the suspended plasmid at -20°C. The DNA is stable for at least one year from date of shipping when stored at -20°C.

RefSeq: [NM_001254720.1](#), [NP_001241649.1](#)

RefSeq Size: 3883 bp

RefSeq ORF: 3405 bp

Locus ID: 4604

UniProt ID: [Q00872](#)

Cytogenetics: 12q23.2

MW: 128.3 kDa

Gene Summary: This gene encodes a member of the myosin-binding protein C family. Myosin-binding protein C family members are myosin-associated proteins found in the cross-bridge-bearing zone (C region) of A bands in striated muscle. The encoded protein is the slow skeletal muscle isoform of myosin-binding protein C and plays an important role in muscle contraction by recruiting muscle-type creatine kinase to myosin filaments. Mutations in this gene are associated with distal arthrogryposis type I. Alternatively spliced transcript variants encoding multiple isoforms have been observed for this gene. [provided by RefSeq, Dec 2011]