

Product datasheet for RC235176

DIAPH3 (NM_001258368) Human Tagged ORF Clone

Product data:

Product Type:	Expression Plasmids
Product Name:	DIAPH3 (NM_001258368) Human Tagged ORF Clone
Tag:	Myc-DDK
Symbol:	DIAPH3
Synonyms:	AN; AUNA1; DIA2; diap3; DRF3; mDia2; NSDAN
Vector:	pCMV6-Entry (PS100001)
E. coli Selection:	Kanamycin (25 ug/mL)
Cell Selection:	Neomycin
ORF Nucleotide Sequence:	>RC235176 representing NM_001258368 Red=Cloning site Blue=ORF Green=Tags(s)

TTTTGTAATACGACTCACTATAGGGCGGCCGGAATTCGTCGACTGGATCCGGTACCGAGGAGATCTGCC
GCC**CGATCGCC**

ATGGAACGGCACCAGCCGCGGCTGCACCACCCGGCCCAAGGCTCAGCCGCTGGGACTCCCTACCCTTCT
CAGCCTCTCTCCGCGGCTGCCGGAAAGCAAGATGCCGCGCAGGAAGGGCCCCAACACCCTCCGCCGCC
CAGTGGCCCCGAGGAGCCTGGGAGAAGCGCCCAAGTTGAAGATATGAATTTAAATGAAGATAAAAAG
GCACCATTGCGGGAAAAGGACTTCAGTATCAAAAAGAAATGGTATGCAGTACATTAATACTGCTTCTA
AGACAGGAAGTCTTAAGAGAAGCCGACAGATCTCACCTCAGGAATTCATTCATGAGCTGAAAATGGGGTC
TGCAGATGAGAGACTTGTACATGCCTGGAGTCTCTCCGAGTGTCTTTGACCAGCAATCCTGTGAGTTGG
GTGGAAAGCTTTGGACATGAAGGGCTTGGATTATTATTAGACATTTTGGAAAACTGATTAGTGGAAAA
TCCAAGAAAAAGTTGTAAGAAAAATCAACATAAAGTCATACAGTGTCTAAAAGCCCTGATGAATACGCA
GTATGGCTTGAAAGAATTATGAGTGAGGAGAGGAGCCTTTCCTTATTGGCCAAAGCCGTGGATCCCAGA
CACCCCAATATGATGACAGATGTGGTTAACTTCTCTCGGTATGCATTGTAGGGGAAGAAAGCATCC
TTGAAGAAGTTTGAAGCTTTAACTTCACTGGTGAAGAAAAAAATGACAGATTTTTTGTATTGT
GGAAGGCCTCCGCACAATTCACTGCAAGTAGCTTGTATGCAGCTCATCAATGCCCTGGTTACA
TCTCTGATGATTTGGATTTAGGCTTACATCAGAAATGAATTTATGCGTTGTGGATTGAAGAGATAT
TGCCAAATTTAAATGCATTAAGAATGATGGCCTGGATATCCAATTAAGTCTTTGATGAGCATAAAGA
AGAAGATTTGTTGAGTTATCCCATCGCCTTGAAGATATTAGAGCTGAATTTGATGAAGCATATGATGT
TACAACATGGTGTGGAGCACAGTTAAAGAACTAGAGCAGAGGGATTTTTATTCTATTCTTCAGCATC
TTTTGCTGATTCGAAATGATTATTTATAAGGCAACAATACTTCAAATTAATTGATGAGTGTGATCCCA
GATTGTATTGCATAGAGATGGAATGGATCCAGACTTACATATCGAAAAAGACTAGATTTAGATTTAAC
CAGTTTGTAGACATTTGCATAGATCAAGCAAACTAGAAGAGTTTGAAGAGAAAGCATCAGAACTTTACA
AGAAATTTGAAAAAGAGTTTACCACCACCAAGAACTCAGGCTGAATTGCAGAAAAAGAGGCAAGAT
TAATGAGCTTCAAGCAGAGCTACAAGCTTTAAGTCTCAGTTTGGTGCCTTGCCAGCTGATTGTAATATT
CCTTTCCTCCCTCTAAAGAAGGTGGAAGTGGCCACTCAGCACTTCTCTCCGCTCCACTGCCTTCTG



[View online >](#)

GTGGAGGGGTGCCGCCTCCACCTCCTCCCCACCACCTCCTCCACTTCCAGGAATGCGGATGCCATTTCAG
 TGGTCTGTGCCTCCACCACCTCCCCTGGGATTCTTGGAGGACAAAATTCTCCTCTACCAATCCTG
 CCATTTGGGTTGAAACCAAGAAAGAAATTTAAACCTGAAATCAGCATGAGAAGATTGAATTTGGTTAAAGA
 TCAGACCTCATGAAATGACTGAAAACCTGTTTCTGGATAAAAAGTAAATGAAAAAAGTATGAAAACGTGGA
 TTTGCTTTGTAACCTTGAGAATACATTTTGTGGCAACAAAAGAGAGAAGAGAAGGAAGATATTGAA
 GAGAAGAAATCGATTAAGAAAAAATTAAGAAGCTTAAAGTTTTAGATTCTAAAAATGCCCAGAACCTTT
 CAATCTTCTGAGCTCTTTTCGGGTGCCATATGAGGAAATCAGAATGATGATATTGGAAGTAGATGAAAC
 ACGGTTTGGCAGAGTCTATGATTCAGAACTTAATAAAGCATCTTCTGATCAAGAGCAATTAATTCATTG
 TCTCAGTTCGAAGAGTGAATATAGCAACTTATGTGAACCTGAGCAGTTTGTGGTTGTGATGAGCAATGTGA
 AGAGACTACGGCCACGGCTCAGTGTCTTCTTTAAGCTTCAAGTTCAGTTTGAAGAGCAGGTGAACAACATCAA
 ACCTGACATCATGGCTGTGACTGCCTGCGAAGAGATAAAGAAGAGCAAAAAGCTTTAGCAAGTTGCTG
 GAACTTGTATTGCTAATGGGAACTACATGAATGCTGGCTCCCGAATGCTCAAACCTTCGGATTTAACCT
 TTAGCTCTCTGTAAACTAAAGGACACAAAATCAGCAGATCAGAAAACAACGCTACTTCATTTCTGGT
 AGAAATATGTGAAGAGAAGTACCCTGATATACTGAATTTTGTGGATGATTTGGAACCTTTAGACAAAAGCT
 AGTAAAGTCTCTGTAGAAACGCTGAAAAGAATTTGAGGCAGATGGGAAGGCAGCTTCAACAGCTTGAGA
 AGGAATTGGAAAACCTTTCCCTCCTGAGGACTTGCATGACAAGTTTGTGACAAAAGATGCCAGATTTGT
 TATCAGTGCAAAAAGAACATATGAGACACTTTCGAAGTTACACGAAAACATGAAAAGTTATACCAGAGT
 ATAATAGGATACTATGCCATTGATGTGAAGAAGGTGTCTGTGGAAGACTTCTTACTGACCTGAATAACT
 TCAGAACCACATTCATGCAAGCAATAAAGGAGAAATCAAAAAAGAGAAGCAGAGGAAAAAGAAAAACG
 TGTCAGAATAGCTAAAGAATTAGCAGAGCGAGAAAAGACTCGAACGCCAACAAAAGAAAAAGCGTTTATTA
 GAAATGAAGACTGAGGGTGTGAGACAGGAGTGTGGAATAATCTGCTGGAGGCTTGCAGTCCGGGGCTG
 CCTTCCGCGACAGAAGAAAAAGGACCCGATGCCAAAAGATGTTCCGCGAGAGTCTCAGTCCAATGTCTCA
 GAGGCTGTTCTGAAAGTTTGTAAACATGAAAATCAGAAAAGTGCAGTTGACAGAAGGGTACAGTTTACAC
 TACAATATCAATTGCAACTCAACAAGGACTCCAGTCCGCAAGGAGCTTAATTATAATCTAGACACTATA
 CGTCTACTGGGAGGATCAAGGCAGCTGAGAAGAAGGAAGCGTGTATGTAGAAAGCAACAGAAAAAGGA
 AACGGAACCTTCTGGCTCTTTTTCTAAAAATGAATCAGTTCGCAAGTTGAGCCCTGCTGGCAAGATTA
 CGAGCTTTA

ACGCGTACGCGGCCGCTCGAGCAGAAACTCATCTCAGAAGAGGATCTGGCAGCAATGATATCCTGGATT
 ACAAGGATGACGACGATAAGGTTTAA

Protein Sequence:

>RC235176 representing NM_001258368
 Red=Cloning site Green=Tags(s)

MERHQPRLLHHPAQGSAAGTPYPSSASLRGCRSKMPPRRKGPQHPPPPSGPEEPGEKRPKFEDMNLNEDKK
 APLREKDFSIKKEMVMQYINTASKTGLKRSRQISPFQEIHELKMGSADELRVLCLESLRVSLTSPVSW
 VESFGHEGLGLLLDILEKLIISGKIQEKVVKKNQHKVIQCLKALMNTQYGLERIMSEERSLSLLAKAVDPR
 HPNMMTDVVKLLSAVCI VGEESILEEVLEALTSAGEEKKIDRFFCIVEGLRHNSVQLQVACMQLINALVT
 SPDDLDFRLHIRNEFMRCGLKEILPNLKCIKNDGLDIQLKVFDEHKEEDLFELSHREDIRAELDEAYDV
 YNMVWSTVKETRAEGYFISILQHLIRNDYFIRQQYFKLIDECVSIIVLHRDGMDFTYRKRDLDLT
 QFVDICIDQAKLEEFEEKASELYKFEKEFTDQETQAELOKKEAKINELQAELOAFKSQFGALPADCNI
 PLPPSKEGGTGHSA LPPPPPLPSGGGVPPPPPPPPPPPLPGMRMPFSGPVPPPPPLGFLGGQNSPPLPIL
 PFGLPKKKEFKPEISMRRLNWLKIRPHEMTENCFWIKVNNENKYENVDLLCKLENTFCCQQKEREEEDIE
 EKKSIIKKIKELKFLDSKIAQNL SIFLSSFRVPYEEIRMMILEVDETRLAESMIQNLIKHLPDQEQNLNSL
 SQFKSEYSNLCEPEQFVVVMSNVKRLRPRLSAILFKLQFEEQVNNIKPDIMAVSTACEEIKKSKSF SKLL
 ELVLLMGNMAGSRNAQTFFGNLSSLCKLKDTSADQKTTLLHFLVEICEEKYPDILNFVDDLEPLDKA
 SKVSVETLEKNLRQMGRQLQLEKELETFFPPEDLHDKFVTKMSRFVISAKEYETLSKLHENMEKLYQS
 IIGYYAIDVKKVSVEFDLTDLNNFRTTFMQAIKENIKKREAEKEKRVRIAKELAERERLERQQKKRLL
 EMKTEGDETGVMNDLLEALQSGAAFRDRRKRTPMPKDVRQSLSPMSQRPVLKVCNHNQKVLTEGSRSH
 YNINCNSTRTPVAKELNYNLDTHSTGRIKAAEKKEACNVE SNRKKETELLGSFSKNE SVPEVEALLARL
 RAL

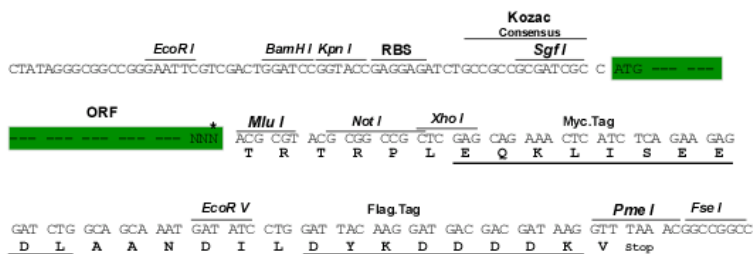
TRTRPLEQKLI SEEDLAANDILDYKDDDDKV

Restriction Sites:

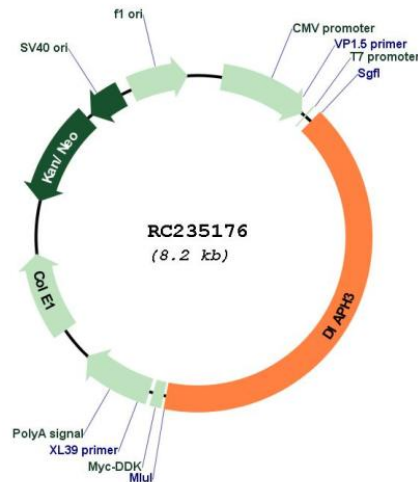
SgfI-MluI

Cloning Scheme:

Cloning sites used for ORF Shuttling:



* The last codon before the Stop codon of the ORF

Plasmid Map:


ACCN: NM_001258368

ORF Size: 3369 bp

OTI Disclaimer: The molecular sequence of this clone aligns with the gene accession number as a point of reference only. However, individual transcript sequences of the same gene can differ through naturally occurring variations (e.g. polymorphisms), each with its own valid existence. This clone is substantially in agreement with the reference, but a complete review of all prevailing variants is recommended prior to use. [More info](#)

OTI Annotation: This clone was engineered to express the complete ORF with an expression tag. Expression varies depending on the nature of the gene.

Components: The ORF clone is ion-exchange column purified and shipped in a 2D barcoded Matrix tube containing 10ug of transfection-ready, dried plasmid DNA (reconstitute with 100 ul of water).

Reconstitution Method:

1. Centrifuge at 5,000xg for 5min.
2. Carefully open the tube and add 100ul of sterile water to dissolve the DNA.
3. Close the tube and incubate for 10 minutes at room temperature.
4. Briefly vortex the tube and then do a quick spin (less than 5000xg) to concentrate the liquid at the bottom.
5. Store the suspended plasmid at -20°C. The DNA is stable for at least one year from date of shipping when stored at -20°C.

RefSeq: [NM_001258368.2](#)

RefSeq Size: 4602 bp

RefSeq ORF: 3372 bp

Locus ID: 81624

UniProt ID: [Q9NSV4](#)

Cytogenetics: 13q21.2

Protein Pathways: Regulation of actin cytoskeleton

MW: 129.4 kDa

Gene Summary: This gene encodes a member of the diaphanous subfamily of the formin family. Members of this family are involved in actin remodeling and regulate cell movement and adhesion. Mutations in this gene are associated with autosomal dominant auditory neuropathy 1. Multiple transcript variants encoding different isoforms have been found for this gene. [provided by RefSeq, Apr 2012]