

Product datasheet for **RC235078**

CCDC46 (CEP112) (NM_001199165) Human Tagged ORF Clone

Product data:

Product Type:	Expression Plasmids
Product Name:	CCDC46 (CEP112) (NM_001199165) Human Tagged ORF Clone
Tag:	Myc-DDK
Symbol:	CCDC46
Synonyms:	CCDC46; MACOCO; SPGF44
Mammalian Cell Selection:	Neomycin
Vector:	pCMV6-Entry (PS100001)
E. coli Selection:	Kanamycin (25 ug/mL)



[View online »](#)

ORF Nucleotide Sequence:

>RC235078 representing NM_001199165
 Red=Cloning site Blue=ORF Green=Tags(s)

TTTTGTAATACGACTCACTATAGGGCGGCCGGAATTCGTGACTGGATCCGGTACCGAGGAGATCTGCC
 GCC**CGCATCGCC**

ATGGAAGTGGGAAGTGAAGAAGAAAAATGGGAGAAGCTGGATGCAGAATTTGATCACTTTGTGGTTGATA
 TGAAGCCCTTTGTTCTAAAATTACCTCATAGGACAGAACGGCAGAGGTGTGCTCTTTGGATTAGAAAAGCT
 GTGCGAACCTTCAGGAACAGGTGCGAATAATGGGGAGGAAGAATCGGAACCTGTATGCAAAATTTGTTA
 TTGCATATGCTTAAACGAGGTGCGCTTGAAGGCCCTTTTACACACCGACCTGAACCCGGGACACTAAAAA
 TTCTACCTTCATACATGTCCATCTATTTTGGATGAACCAATCCAGCAGGACAAAAGTTCAAGCCGAGA
 GGGATTACCAGCCTGGTACTGGGTGAGCTGGAGACAAGTGAACACAAAATTAATGAATCATGGAAACTC
 TCTTCTGGAGAAGATAACACTTTAGTACAGTCCCACTGATGTCTACAGCAGGGAACAGTACACTGGGA
 AGCTCCGAGTGGATCACACTCCTTGGTCCAACCTCACAGAGAAGATGGACAAAAATTACCCCAAAGAT
 TTGTGAAGTTTATTCGAAAAATCTCCTGTTTCTTTGGATGATAGTGACATTGAAGCTCGCCTTAATAGT
 TGGAACTTTGGGATAGAAAAATCCTCGATACCTGAGACAGAAGCCTATCCAGTTTCTCTGATGACACCGA
 AATTCAGCCTGAGAAAAATCCAGCAGTTTCCATGATGATCAATTTCTCTCTCGAATACGTGAGAAAAGCT
 GGACATGAAAAACAAAATGATGGAAGCTAAATTTTATGAAGAAAAGCTTAACTGCAACGAAAAATGAT
 GCTGATGTTTCAAGATTTTAGAAAAGAAAGTAAATGAAATAGAAGAAGTGAAGCTTTTATACAGGAGTA
 AACACATGAAACTGAAGAGACTATTAGAAAGCTTGAAGAAAAGTTTCAAGCACTGATACGTGACTGTCA
 AGTTATCAGAGAGACTAAAGAAGACCAGATTGCAGAGCTGAAAAAGATATGTGAACAAAGTACGGAATCT
 CTAATAATGACTGGGAAAAAAGCTTCAAAATGCTGTAGCAGAAAATGGAACAGGAAAAGTTTGTCTTC
 AAAAGCAACACTGAAAAACATCAAGAATTGCTTGGAGTACAAAATGTGCGTCTGAATAAAATGGAGAG
 TGAATACATGGCGCAACACAGTCCACAACCACATGATCAAAGAAGTGGAGGCCCGTGTCCAGCAGCTG
 ACTGGAGAAGCAGAGAACAGTAATTTACAGAGGCAAGAAATTAATTCAGAAAAAGCAGAAGTTGAAAGAT
 GTTACCAGATAACGTGTAGTGAATTACAAGAAGTAAAGGCAAGGCGTAACACACTGCATAAAGAGAAGGA
 CCATCTTGTAATGATTATGAGCAAAACATGAACTGTTACAACCAAATATGATGCTGATATAAACCTT
 CTAACAAGAACATGCTCTTTCAGCTTCAAGGCATCTAGTATGATTGAAGAATTAGAGCAGAATGTCT
 GTCAATTAACACAGCAGTTACAGGAATCAGAACTTCAAAGAAAAGCAACAACTAAGGGATCAAGAAAAATA
 GTTTCAGATGGAGAAAAGTCATTTAAACACATCTATGAAAAAAGGCTCATGACTTGCAGAGTGAAGTT
 GATAAAGGAAAAGATACTCAAAGAAAATTCATAAATTTGAGGAAGCTTTGAAGGAAAAGAGGAGC
 AGCTAACTCGTGTGACTGAAGTTTCAAGGTTGAGGCCCCAGCAGGAGATGCCGCTCTGGAAGAGTTTAA
 GCGGCAGGTGGAAGTGAAGTCAAGAGAAAGTCTATGCTGAAATGAAAGAGCAGATGGAAAAAGTGGAGGCA
 GATCTAACTAGATCCAAATCTCTTCTGAGAAAACATCAAAGGAGTTTTTATGGCAACTGGAGGACATCA
 GACAGCGGTATGAAACAACAGATAGTAGAGCTGAAGCTGGAGCATGAACAGGAGAAGAGCGCACCTATTACA
 GCAGCATAACGCAGAGAAGGATAGCCTAGTCCGAGACCATGAACGGGAAATTTGAAAACCTGGAAAAACAG
 CTTGCGCTGCCAATATGGAGCACGAAAATCAAATTCAGGAGTTCAAGAAAACGAGATGCACAGGTTATTG
 CCGACATGGAGGCCAGGTTCAAAAGTTGAGAGAAGAAATGATCAATGTGAAGTCAACAGCGGAAACAGCA
 GCTGGTAGAGCTTGGTCTTCTTCTGTAAGAGGAAAAGCAAAGGGCTACAAGGGAACATGAGATTGTGCT
 AAATAAACTGAAGGCTGAATCAGAAAAGATGAAAAATAGAGCTGAAAAAGACTCATGCTGAGACAGAGA
 TGACACTGGAAAAAGGCCAACAGCAAGCTGAAGCAGATTGAGAAGGAATCACTCAGAAGCTTGCCAAATC
 TTCACAGATCATAGCAGAACTTCAAGCAACCTTTCTCTCTGAAAGAAGAGAACAGCCAGCAGCAGCTT
 GCTGCAGAAAAGCGGCTCCAGGATGTTAGACAAAAGTTTGAAGATGAGAAGAAGCAGCTGATTAGAGATA
 ATGACCAAGCAATCAAGGTTTTACAAGTGAATTAGAAAACCGTTCTAATCAGGTGCGATGTGCAGAGAA
 AAAATTACAACACAAAAGAAATGGAGTCAAGGAACAGATAACTTACATACGACAAGAATATGAAACAAAA
 TTGAAAGGATTGATGCCAGCATCCCTAAGACAAGAACTTGAAGACACCATTTCTCCCTAAAATCACAGG
 TTAATTTCTGCAAAAGAGAGCTTCCATCTTTCAGGAAGAACTGACTACATATCAAGGCAGAAGG

ACGCGTACGCGGCCGCTCGAGCAGAAAACCTCATCTCAGAAGAGGATCTGGCAGCAAATGATATCCTGGATT
 ACAAGGATGACGACGATAAGGTTTAA

Protein Sequence: >RC235078 representing NM_001199165
 Red=Cloning site Green=Tags(s)

```
MEVGSEEEKWEKLD AEFDFVVDMPFVLKLP HRTERQRCALWIRKLC EPSGTGAGIMGRKNRNL YAKLL
LHMLKRGAL EGPFTHRPEPGLKILPSYMSIYFDEPNPARAKGSSPEGLPAWVLGELETSEHKLNESWKL
SSGEDNTLVQSP TDVYSREQYTGKLRVRSLSLSP THREDGQNI TPKICEVYSKSPVSLDDSDIEARLNS
WNLGIENPRYL RQKPIPVSLMTPKFSLRKSSSFHDDHFLSR IREKELDMKTKMMEAKFHEEKLLKQQKHD
ADVQKILERKNNE IEELKTLYRSKQHEETEETIRKLEKKVQTL IRDCQVIRETKEDQIAELKICEQSTES
LNNDWEKKLHNAVAEME QEKFDLQKQHTENIQELLEDTNVR LNKMESEYMAQTQSTNHMIKELEARVQQL
TGEAENSNLQRQKLIQEKAELERCYQITCSELQEVKARRNTLHKEKDHLVNDYEQNMKLLQTKYDADINL
LKQEHALSASKASSMIEELEQNVCQLKQQLQESELQRKQQLRDQENKFQMEKSHLKHIEYKKAHDLQSEL
DKGKEDTQKKIHKFEEALKEKEEQQLTRVTEVQRLQAQQADAAL EEFKRVQVELNSEKVYAEMKEQMEKVEA
DLTRSKSLREKQSKEFLWQLEDIRQRYEQQIVELKLEHEQEKT HLLQQHNAEKDSLVRDHEREIENLEKQ
LRAANMEHENQIQEFKKRDAQVIADMEAQVHKLREELINVNSQRKQQLVELGLLREEEKQRATREHEIVV
NKLKAESEKMKIELKTHAAETEMTLEKANSKLKQIEKEYTQKLAKSSQI I AELQTTISSLKEENSQQQL
AAERRLQDVRQKFEDEKKQLIRDNDQAIKVLQDELENRSNQVRCAEKKLQHKELESQEQITYIRQEYETK
LKLGLMPASLRQELEDTISLKSQVNF LQKRASILQEELTTYQGRR
```

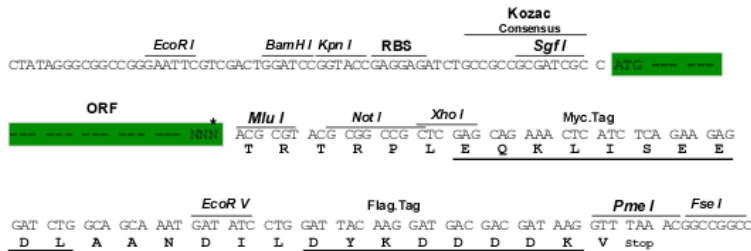
TRTRPLEQKLISEEDLAANDILDYKDDDDKV

Chromatograms: https://cdn.origene.com/chromatograms/mk8020_f12.zip

Restriction Sites: SgfI-MluI

Cloning Scheme:

Cloning sites used for ORF Shuttling:



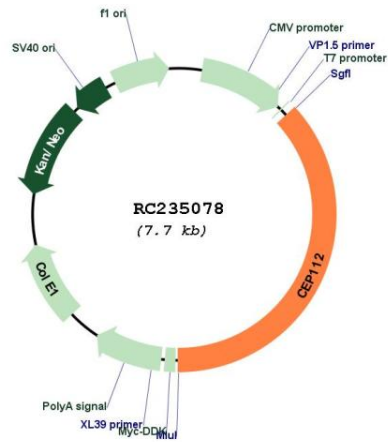
* The last codon before the Stop codon of the ORF

ACCN: NM_001199165

ORF Size: 2865 bp

OTI Disclaimer:	The molecular sequence of this clone aligns with the gene accession number as a point of reference only. However, individual transcript sequences of the same gene can differ through naturally occurring variations (e.g. polymorphisms), each with its own valid existence. This clone is substantially in agreement with the reference, but a complete review of all prevailing variants is recommended prior to use. More info
OTI Annotation:	This clone was engineered to express the complete ORF with an expression tag. Expression varies depending on the nature of the gene.
Components:	The ORF clone is ion-exchange column purified and shipped in a 2D barcoded Matrix tube containing 10ug of transfection-ready, dried plasmid DNA (reconstitute with 100 ul of water).
Reconstitution Method:	<ol style="list-style-type: none">1. Centrifuge at 5,000xg for 5min.2. Carefully open the tube and add 100ul of sterile water to dissolve the DNA.3. Close the tube and incubate for 10 minutes at room temperature.4. Briefly vortex the tube and then do a quick spin (less than 5000xg) to concentrate the liquid at the bottom.5. Store the suspended plasmid at -20°C. The DNA is stable for at least one year from date of shipping when stored at -20°C.
RefSeq:	NM_001199165.4
RefSeq Size:	3412 bp
RefSeq ORF:	2868 bp
Locus ID:	201134
UniProt ID:	Q8N8E3
Cytogenetics:	17q24.1
MW:	112.7 kDa
Gene Summary:	This gene encodes a coiled-coil domain containing protein that belongs to the cell division control protein 42 effector protein family. In neurons, it localizes to the cytoplasm of dendrites and is also enriched in the nucleus where it interacts with the RNA polymerase III transcriptional repressor Maf1 to regulate gamma-aminobutyric acid A receptor surface expression. In addition, the protein has been identified as a component of the human centrosome. Alternative splicing results in multiple transcript variants. [provided by RefSeq, Nov 2014]

Product images:



Circular map for RC235078