

Product datasheet for **RC235074**

PTPRN (NM_001199763) Human Tagged ORF Clone

Product data:

Product Type:	Expression Plasmids
Product Name:	PTPRN (NM_001199763) Human Tagged ORF Clone
Tag:	Myc-DDK
Symbol:	PTPRN
Synonyms:	IA-2; IA-2/PTP; IA2; ICA512; R-PTP-N
Mammalian Cell Selection:	Neomycin
Vector:	pCMV6-Entry (PS100001)
E. coli Selection:	Kanamycin (25 ug/mL)



[View online »](#)

ORF Nucleotide Sequence:

>RC235074 representing NM_001199763
 Red=Cloning site Blue=ORF Green=Tags(s)

TTTTGTAATACGACTCACTATAGGGCGGCCGGAATTCGTCGACTGGATCCGGTACCGAGGAGATCTGCC
 GCC**CGCATCGCC**

ATGCGGCGCCCGGGCGGCTGGGGTCTCGGGGATCCGGGGTCTCCGGCTGCTCCTCTGCCTCTGCTG
 TGCTGAGCAGCCCGGGGGCTGCAGCGCCGTTAGTGCCACGGCTGTCTATTTGACCGCAGGCTCTG
 CTCTCACCTGGAAGTCTGTATTACAGGATGGCTTGTGGGCAAGTGGGAGTGGGCGAGGCCCGG
 CCCCTTTTGAAGTACCTCCCCAGTTCTCCAACGCTTACAAGGTGTGCTCCGACAACTCATGTCCCAAG
 GATTGTCTGGCAGATGACCTCACCCAGTATGTGATCTCTCAGGAGATGGAGCGCATCCCAGGCTTCG
 CCCCCAGAGCCCGTCCAAGGGACAGGCTGGCTTGGCACCAAGAGACCTGGTCTGCTGGAGAGCTG
 CTTTTACAGGACATCCCCACTGGCTCCGCCCTGCTGCCAGCATCGGCTCCACAACCACAGTGGGCA
 AAGGTGGAGCTGGGGCCAGCTCCTCTGTCCCCTCTGCAGGCTGAGCTGCTCCGCCTCTCTTGGAGCA
 CCTGCTGCTGCCCCACAGCCTCCACCCCTTCACTGAGTTACGAACCTGCCTTGTGCAGCCCTACCTG
 TTCCACCAAGTTTGGCTCCCGTATGGCTCCAGGGTCTCAGAGGGTCCCCAGGGATGGTCACTGTCGGCC
 CCCTGCCCAAGGCTGAAGCCCTGCCCTCTCAGCAGAAGTGCCTCCAAGGGCATATTTGGGGACCACCC
 TGGCCACTCTACGGGGACCTCCAGGGCTTACCTGCCAGCTTTTTCAAGACTCTGGGCTGCTCTAT
 CTGGCCAGGAGTTGCCAGCACCCAGCAGGGCCAGGGTGCCAAGGCTGCCAGAGCAAGGGAGCAGCAGCC
 GGGCAGAGGACTCCCCAGAGGGCTATGAGAAGGAAGGACTAGGGGATCGTGGAGAGAAGCCTGCTCCCC
 AGCTGTGCAGCCAGATGCGGCTCTGCAGAGGCTGGCCGCTGTGCTGGCGGGCTATGGGGTAGAGCTGCGT
 CAGCTGACCCCTGAGCAGCTCTCCACACTCCTGACCCTGCTGCAGCTACTGCCAAGGGTGCAGGAAGAA
 ATCCGGGAGGGTGTAAATGTGGAGCTGATATCAAGAAAACAATGGAGGGCCGGTGGAGGGCAGAGA
 CACAGCAGAGCTTCCAGCCGCACATCCCCATGCCTGGACACCCCACTGCCAGCCCTACCTCCAGTGAA
 GTCCAGCAGGTGCCAAGCCCTGTCTCTGAGCCTCCCAAGGCTGCCAGACCCCTGTGACACCTGTCC
 TGCTAGAGAAGAAAAGCCCACTGGGCCAGAGCCAGCCACGGTGGCAGGACAGCCCTCAGCCCGCCAGC
 AGCAGAGGAATATGGCTACATCGTCACTGATCAGAATGTGGTGGGACCAGCCCTCACCTCCGCATCCGG
 CACAATGAGCAGAACCTGTCTTTGGCTGATGTGACCCAACAAGCAGGGCTGGTGAAGTCTGAACTGGAAG
 CACAGACAGGGCTCCAAATCTTGCAGACAGGAGTGGGACAGAGGGAGGAGGCAGCTGCAGTCTTCCCCA
 AACTGCGCACAGCACCTACCCATGCGCTCAGTGTGCTCACTCTGGTGGCCCTGGCAGGTGTGGCTGGG
 CTGCTGGTGGCTCTGGCTGTGGCTCTGTGTGTGCGGCAGCATGCGCGGCAGCAAGACAAGGAGCGCCTGG
 CAGCCCTGGGGCCTGAGGGGGCCATGGTGACACTACCTTTGAGTACCAGGACCTGTGCCCCAGCAGCAT
 GGCCACGAAGTCTTGTCAACCGGGCAGAGGGTCCACCGGAGCCTTACGGGTGAGCAGTGTGTCTCC
 CAGTTCAGCGACGACGCCAGGCCAGCCAGCTCCCACAGCAGCACCCCGTCTGGTGGCAGGAGCCGG
 CCCAAGCCAACATGGACATCTCCACGGGACACATGATTCTGGCATACATGGAGGATCACCTGCGGAACCG
 GGACCGCTTGGCAAGGAGTGGCAGGCCCTCTGTGCCTACCAAGCAGAGCCAAACACCTGTGCCACCGCG
 CAGGGGGAGGGCAACATCAAAAAGAACCAGGATCCTGACTTCTGCCCTATGACCATGCCCGCATAAAAC
 TGAAGTGGAGAGCAGCCCTTCTCGGAGCGATTACATCAACGCCAGCCCAATTATTGAGCATGACCTCG
 GATGCCAGCCTACATAGCCACGAGGGCCGCTGTCCATACCATCGCAGACTTCTGGCAGATGGTGTGG
 GAGAGCGGCTGCACCGTACATCGTATGCTGACCCCGTGGTGGAGGATGGTGTCAAGCAGTGTGACCGCT
 ACTGGCCAGATGAGGGTGCCTCCCTTACCACGTATATGAGGTGAACCTGGTGTGGAGCAGCATCTGGT
 CGAGGACTTTCTGGTGGGAGCTTCTACCTGAAGAAGTGCAGACCCAGGAGACGCGCACGCTCACGCGAG
 TTCCACTTCTCAGTGGCCGGCAGAGGGCACACCGGCCCTCCACGCGGCCCTGCTGGACTTCCGCGAGGA
 AGGTGAACAAGTGTACCGGGCCGCTCCTGCCCATCATCGTGCAGTGCAGTGTGGTGGGGGAGGAC
 CGGCACCTACATCCTCATCGACATGGTCTGAACCGCATGGCAAAAGGAGTGAAGGAGATTGACATCGCT
 GCCACCCTGGAGCATGTCGTGACAGCGGCTGGCCTTGTCCGCTCTAAGGACCAGTTGAATTTGCC
 TGACAGCCGTGGCGGAGGAAGTGAATGCCATCCTCAAGGCCCTGCCCCAG

ACGCGTACGCGGCCGCTCGAGCAGAACTCATCTCAGAAGAGGATCTGGCAGCAAATGATATCCTGGATT
 ACAAGGATGACGACGATAAGGTTTAA

Protein Sequence: >RC235074 representing NM_001199763
 Red=Cloning site Green=Tags(s)

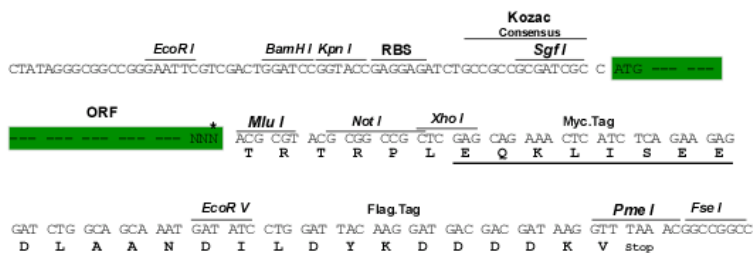
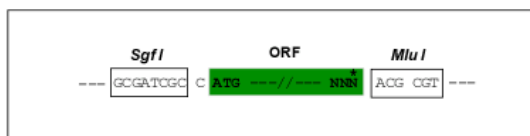
MRRPRRPGGLGGSGGLRLLLLCLLLLSSRPGGCSAVSAHGCLFDRRLCSHLEVCIQDGLFGQCQVGVGQAR
 PLLQVTSPLVLRQLQGLRQLMSQGLSWHDDLQYVISQEMERIPRLRPPEPRPRDRSGLAPKRPGPAGEL
 LLQDIPTGSAPAAQHRLPQPPVKGAGASSLSPLQAELLPLLEHLLPPQPPHPSLSYEPALLQPYL
 FHQFGSRDGSRVSESGPMVSVGLPKAEAPALFRTASKGIFGDHPGHSYGDLPGPSAQLFQDSGLLY
 LAQELPAPSRARVPRLPEQGSSSRAEDSPEGYEKGLGDRGEKPAVQPDAAALQRLAAVLAGYGVLELR
 QLTPEQLSTLLTLLQLLPKGAGRNPGGVVNVGADIKKTMEGPVEGRDTAELPARTSPMPGHPTASPTSSE
 VQQVPSVPSSEPPKAARPPVTPVLEKKSPGQSQPTVAGQPSARPAEEYGIYVTDQNVVGPALTRIR
 HNEQNLADVTQQAGLVKSELEAQTGLQILQTGVGQREAAAVALPQTAHSTSPMRSVLLTLVALAGVAG
 LLVALAVALCVRQHARQQDKERLAALGPEGAHGDTTTFEYQDLCRQHMTKSLFNRAEGPPEPSRVSSVSS
 QFSDAAQASPSHSTPSWCEEPAQANMDISTGHMILAYMEDHLRNRDLAKEWQALCAYQAEPNTCATA
 QGEGNIKKNRHPDFLPYDHARIKLVESPSRSDYINASPIIEHDPMPAYIATQGPLSHTIADFQWQMW
 ESGCTVIYMLTPLVEDGVKQCDRYWPDEGASLYHYVEVNLVSEHIWCEDFLVRSFYLNKVTQETRTLQ
 FHFLSWPAEGTPASTRPLLDFRKVNKCYGRS CPIIVHCSGDGAGRTGTIYLIDMVLNRMAGVKEIDIA
 ATLEHVRDQRPLVRSKQDFEFALTAVAEVNAIKALPQ

TRTRPLEQKLI SEEDLAANDILDYKDDDDKV

Restriction Sites:
Cloning Scheme:

SgfI-MluI

Cloning sites used for ORF Shuttling:

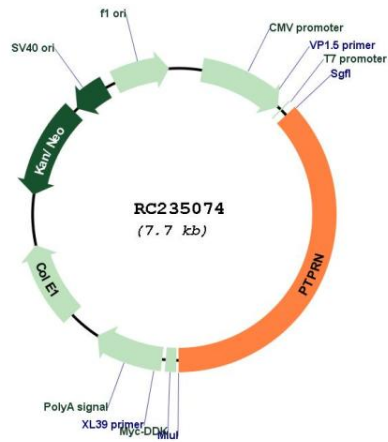


* The last codon before the Stop codon of the ORF

ACCN: NM_001199763
ORF Size: 2850 bp

OTI Disclaimer:	The molecular sequence of this clone aligns with the gene accession number as a point of reference only. However, individual transcript sequences of the same gene can differ through naturally occurring variations (e.g. polymorphisms), each with its own valid existence. This clone is substantially in agreement with the reference, but a complete review of all prevailing variants is recommended prior to use. More info
OTI Annotation:	This clone was engineered to express the complete ORF with an expression tag. Expression varies depending on the nature of the gene.
Components:	The ORF clone is ion-exchange column purified and shipped in a 2D barcoded Matrix tube containing 10ug of transfection-ready, dried plasmid DNA (reconstitute with 100 ul of water).
Reconstitution Method:	<ol style="list-style-type: none">1. Centrifuge at 5,000xg for 5min.2. Carefully open the tube and add 100ul of sterile water to dissolve the DNA.3. Close the tube and incubate for 10 minutes at room temperature.4. Briefly vortex the tube and then do a quick spin (less than 5000xg) to concentrate the liquid at the bottom.5. Store the suspended plasmid at -20°C. The DNA is stable for at least one year from date of shipping when stored at -20°C.
RefSeq:	NM_001199763.2
RefSeq Size:	3712 bp
RefSeq ORF:	2853 bp
Locus ID:	5798
UniProt ID:	Q16849
Cytogenetics:	2q35
Protein Families:	Druggable Genome, Transmembrane
Protein Pathways:	Type I diabetes mellitus
MW:	103.3 kDa
Gene Summary:	The protein encoded by this gene is a member of the protein tyrosine phosphatase (PTP) family. PTPs are known to be signaling molecules that regulate a variety of cellular processes including cell growth, differentiation, mitotic cycle, and oncogenic transformation. This PTP possesses an extracellular region, a single transmembrane region, and a single catalytic domain, and thus represents a receptor-type PTP. This PTP was found to be an autoantigen that is reactive with insulin-dependent diabetes mellitus (IDDM) patient sera, and thus may be a potential target of autoimmunity in diabetes mellitus. Alternate splicing results in multiple transcript variants.[provided by RefSeq, Dec 2010]

Product images:



Circular map for RC235074