

Product datasheet for **RC235053**

RBM12 (NM_001198840) Human Tagged ORF Clone

Product data:

Product Type:	Expression Plasmids
Product Name:	RBM12 (NM_001198840) Human Tagged ORF Clone
Tag:	Myc-DDK
Symbol:	RBM12
Synonyms:	HRIHFB2091; SCZD19; SWAN
Mammalian Cell Selection:	Neomycin
Vector:	pCMV6-Entry (PS100001)
E. coli Selection:	Kanamycin (25 ug/mL)



[View online »](#)

ORF Nucleotide Sequence:

>RC235053 representing NM_001198840.
 Blue=ORF Red=Cloning site Green=Tag(s)

```

GCTCGTTAGTGAACCGTCAGAATTTTGTAAACGACTCACTATAGGGCGGCCGGGAATTCGTGACTG
GATCCGGTACCGAGGAGATCTGCCGCCCGCATCGCC
ATGGGTGTGGTCATCCGTTTGAAGGTCTCCCAATTGTGGCGGGGACCATTGGACATTCGCCACTTCTTC
TTGGATTGACCATTCCTGATGGGGCGTGCATATTGTAGGGGGTGAACGGGTGAGGCTTTCATCGTT
TTTGCCACTGATGAAGATGCAAGGCTTGGTATGATGCGCACAGGTGGTACAATTAAGGGTCAAAAGTA
ACACTATTGTTGAGTAGTAAGACGGAAATGCAGAATATGATTGAACTGAGTCGTAGGCGTTTTGAAACT
GCCAACTTAGATATACCACCAGCAAATGCCAGTAGATCAGGACCACCACCTAGCTCAGGAATGAGTAGC
AGGGTAAACTTGCCACAACAGTATCCAACCTTAATAATCCATCACCCAGTGTAGTTACTGCCACCACT
TCTGTTTCATGAAAGCAACAAAAACATACAGACATTTTCCACAGCCAGCGTAGGAACAGCTCCTCAAAT
ATGGGGGCTTCTTTGGGAGCCCAACGTTTAGCTCAACTGTTCCAAGCACAGCCTCTCCAATGAACACA
GTCCCGCCGCCACCAATTCCTCAAATCCAGCGATGCCATCTCTGCCACCAATGCCATCCATTCCCCCA
ATTCCAGTTCCTCCTCCAGTACCTACATTGCCCTCTGTGCTCCTGTGCCCCGATTCCCCCAGTTCCT
TCTGTGCCACCCATGACCCCACTGCCACCCATGTCCGGCATGCCGCCCTGAATCCGCCACCTGTGGCA
CCTCTACCTGCTGGAATGAATGGCTCTGGAGCACCTATGAATTTGAAACAATAATCTGAATCCTATGTTT
CTTGGTCCGTTGAATCCTGTTAACCCATCCAGATGAACTCTCAGAGCAGTGTGAAGCCACTCCCCATC
AACCCATGATGATCTGTATGTCAGTGTGCATGGAATGCCCTTTTCTGCAATGGAAAATGATGTCAGAGAT
TTTTTTCATGGGCTCCGTTGATGCAGTGCATTTGTTGAAAGATCATGTAGGTCGAAAATAATGGGAAT
GGATTGGTTAAGTTTCTCTCCCCTCAAGATACATTTGAAGCTTTGAAACGAAACAGAATGCTGATGATT
CAACGCTATGTGGAAGTTAGCCCTGCCACAGAAAGACAGTGGGTAGCTGCTGGAGCCATACACTTTT
AAGCAAAATATGGGACCTTCTGGACAACTCATCCCCCTCCTCAGACACTCCCAGTCAAAATCGCCC
AGTGGGCAGAAAAGATCAAGGTCAAGATCACACATGAGGCTGGTTTTTGTGTTTACTTGAAAGGGCTA
CCATTTGAAGCAGAAAACAAACATGTCATTGATTTTTTAAAAAGCTGGATATTGTGGAAGATAGTATT
TATATAGCTTATGGACCAATGGGAAAGCAACTGGCGAAGGCTTTGTAGAGTTCAGAAAATGAGGCTGAC
TATAAGGCTGCTCTGTGTCGTATAAACAGTACATGGGCAATCGCTTTATTCAAGTTCATCCAATTACT
AAGAAAGGTATGCTAGAAAAGATAGATATGATTCGAAAAGACTGCAGAACTTCAGCTATGACCAGAGG
GAAATGATACTAAATCCAGAGGGGGATGTCAACTCTGCCAAAGTCTGTGCCACATAACAAATATCCA
TTCAGCATTACAAAGATGGATGTTCTTCAGTTCCTAGAAGGAATCCAGTGGATGAAAATGCTGTACAT
GTTCTTGTGATAACAATGGGCAAGGTCTAGGACAGGCATTGGTTCAGTTTAAAAATGAAGATGATGCA
CGTAAGTCTGAACGCTTACACCGTAAAAAATTAATGGGAGAGAAGCTTTTGTTCATGTAGTTACCCCTA
GAAGATATGAGAGAGATTGAGAAAAATCCCCCTGCCCAAGGAAAAAGGGATTAAGATGCCTGTGCCA
GGTAATCCTGCAGTTCAGGAATGCCCAATGCCGGACTGCCCGGTGTGGGACTGCCCAGTGCAGGACTT
CCCGGTGCAGGCTGCCAGCACAGGACTGCCTGGTTCAGCAATAACCAAGTGCAGGACTGCCTGGTGCG
GGAATGCCAGTGCAGGAATACCTAGTGCAGGAGGTGAAGAGCATGCCTTCCTGACTGTAGGATCAAAG
GAAGCCAATAATGGGCCTCCATTTAACTTTCTGGTAATTTTGGTGGATCAAATGCCTTTGGGCCACCA
ATCCCTCCTCCAGATTAGGAGGCGGGCCTTTGGTGTGCTAGGCTGGTATGCCTTCAGTTGGAAC
AGTGGTTTTGCCTGGTCTAGGACTGGATGTTCCGGTTTTGGAGGTGGACCAACAATTTAAGTGGGCCA
TCGGGATTTGGAGGGGGCCCTCAGAATTTTGGAAATGGCCCTGGTAGCTTAGGCGGTTCCCCGGGTTT
GGAAGTGGCCCTCCTGGTCTTGAAGTGCCCTGGGCATTTGGGTGGGCCACCAGCTTTTGGCCTGGC
CCCGGCCCGGCCCGCCCTGGCCCAATCCATATTGGTGGTCCCCTGGCTTTGCATCTAGTTCTGGA
AAACCAGGACCGACAGTAATTAAGTGCAAAACATGCCCTTTACTGTGTCTATTGATGAGATTTTAGAT
TTCTTTTATGGCTATCAAGTAATCCAGGCTCAGTGTGTTTAAAAACAATGAAAAGGTATGCCACA
GGTGAAGCCATGGTGGCCTTTGAGTCTCGGGATGAAGCCACAGCTGCTGTATTGACTTAAATGACAGG
CCTATAGGTTCAAGAAAAGTAAACTTGTATTAGGG
ACGCGTACGCGGCCGCTCGAGCAGAACTCATCTCAGAAGAGGATCTGGCAGCAAATGATATCCTGGAT
TACAAGGATGACGACGATAAGGTTTAAACGGCCGCGC
  
```

Protein Sequence: >Peptide sequence encoded by RC235053
 Blue=ORF Red=Cloning site Green=Tag(s)

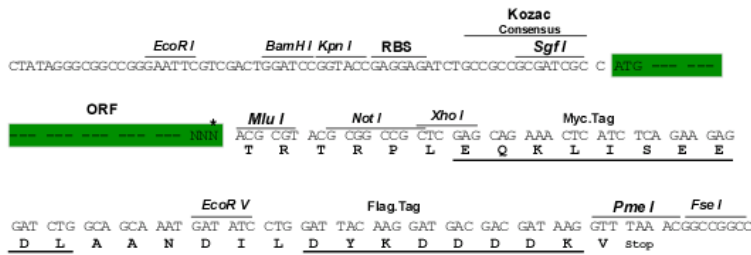
MAVVIRLQGLPIVAGTMDIRHFFSGLTIPDGGVHIVGGELGEAFIVFATDEDARLGMMRTGGTIKGSKV
 TLLLSSKTEMQNMIELSRRRFETANLDIPPANASRSGPPSSGMSSRVNLPPTVSNFNPPSPSVVTATT
 SVHESNKNIQTFSTASVGTAPPNGASFGSPTFSSTVPSTASPMNTVPPPIPPAMPSPMPSP
 IPVPPVPPTLPPVPPVPPIPPVPSVPPMTPLPPMSGMPPLNPPPVAPLPAGMNGSGAPMNLNNLNPMF
 LGPLNPVNPVIQMNSQSSVKPLPINPDDL YVSVHGMFFSAMENDVRDF FHGLRVDVAVHLLKDHVGRNNGN
 GLVKFLSPQDTFEALKRNRMLMIQRYVEVSPATERQWVAAGGHITFKQNMGPSGQTHPPPQTLPRSKSP
 SGQKRSRSPHEAGFCVYLKGLPFEAENKHVIDFFKKLDIVEDSIYIAYGPNKATGEGFVEFRNEAD
 YKAALCRHKQYMGNRFIQVHPITKKGMLEKIDMIRKRLQNF SYDQREMILNPEGDVNSAKVCAHITNIP
 FSITKMDVLQFLEGIPVDENAVHVLVDNNGQGLGQALVQFKNEDDARKSERLHRKKNGREAFVHVVTL
 EDMREIEKNPPAQKKGLKMPVGNPAVPGMPNAGLPGVGLPSAGLPAGLPSTGLPGSAITSAGLPGA
 GMP SAGIP SAGGEEHAF LTVGSKEANNGPPFNFGNFGGSNAFGPPIPPPGLGGGAFGDARPGMPVGN
 SGLPGLGLDVPFGGGPNNL SGPSGFGGGPQNFNGPGSLGGPPGF GSGPPGLGSAPGHLGGPPAFGPG
 PGP GPGPIHIHGPPGF ASSSGKPGPTVIKVNMPFTV SIDEILDFFYGYQVIPGSVCLKYNEKGMPT
 GEAMVAFESRDEATAAVIDLNDRPIGSRVKLVLG
 TRTRPLEQKLISEEDLAANDILDYKDDDDKV

Chromatograms: https://cdn.origene.com/chromatograms/mk6566_f04.zip

Restriction Sites: SgfI-MluI

Cloning Scheme:

Cloning sites used for ORF Shuttling:

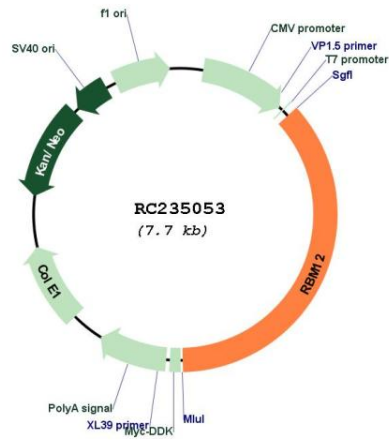


* The last codon before the Stop codon of the ORF

ACCN: NM_001198840

ORF Size:	2796 bp
OTI Disclaimer:	The molecular sequence of this clone aligns with the gene accession number as a point of reference only. However, individual transcript sequences of the same gene can differ through naturally occurring variations (e.g. polymorphisms), each with its own valid existence. This clone is substantially in agreement with the reference, but a complete review of all prevailing variants is recommended prior to use. More info
OTI Annotation:	This clone was engineered to express the complete ORF with an expression tag. Expression varies depending on the nature of the gene.
Components:	The ORF clone is ion-exchange column purified and shipped in a 2D barcoded Matrix tube containing 10ug of transfection-ready, dried plasmid DNA (reconstitute with 100 ul of water).
Reconstitution Method:	<ol style="list-style-type: none">1. Centrifuge at 5,000xg for 5min.2. Carefully open the tube and add 100ul of sterile water to dissolve the DNA.3. Close the tube and incubate for 10 minutes at room temperature.4. Briefly vortex the tube and then do a quick spin (less than 5000xg) to concentrate the liquid at the bottom.5. Store the suspended plasmid at -20°C. The DNA is stable for at least one year from date of shipping when stored at -20°C.
RefSeq:	NM_001198840.2
RefSeq Size:	6639 bp
RefSeq ORF:	2799 bp
Locus ID:	10137
UniProt ID:	Q9NTZ6
Cytogenetics:	20q11.22
MW:	97.4 kDa
Gene Summary:	This gene encodes a protein that contains several RNA-binding motifs, potential transmembrane domains, and proline-rich regions. This gene and the gene for copine I overlap at map location 20q11.21. Alternative splicing in the 5' UTR results in four transcript variants. All variants encode the same protein. [provided by RefSeq, Nov 2010]

Product images:



Circular map for RC235053