

## Product datasheet for **RC235026**

### eIF3s8 (EIF3C) (NM\_001267574) Human Tagged ORF Clone

#### Product data:

Product Type:	Expression Plasmids
Product Name:	eIF3s8 (EIF3C) (NM_001267574) Human Tagged ORF Clone
Tag:	Myc-DDK
Symbol:	eIF3s8
Synonyms:	eIF3-p110; EIF3CL; EIF3S8
Mammalian Cell Selection:	Neomycin
Vector:	pCMV6-Entry (PS100001)
E. coli Selection:	Kanamycin (25 ug/mL)



[View online »](#)

ORF Nucleotide  
Sequence:

>RC235026 representing NM\_001267574.  
Blue=ORF Red=Cloning site Green=Tag(s)

```
GCTCGTTAGTGAACCGTCAGAATTTTGTAAACGACTCACTATAGGGCGGCCGGGAATTCGTGACTG
GATCCGGTACCGAGGAGATCTGCCGCCCGGATCGCC
ATGTCGGGTTTTTACCACCGGTTCCGACAGCGAGTCCGAGTCGTCCTTGTCCGGGGAGGAGCTCGTC
ACCAAACCTGTCGGAGGCAACTATGGCAAACAGCCATTGTTGCTGAGCGAGGATGAAGAAGATACCAAG
AGAGTTGTCGCAGTGCCAAGGACAAGAGGTTTGAGGAGCTGACCAACCTTATCCGGACCATCCGTAAT
GCCATGAAGATTCGTGATGTCACCAAGTGCCTGGAAGAGTTTGAGCTCCTGGGAAAAGCATATGGGAAG
GCCAAAAGCATTGTGGACAAAGAAGGTGTCCCCGGTTCTATATCCGCATCCTGGCTGACCTAGAGGAC
TATCTTAATGAGCTTTGGGAAGATAAGGAAGGGAAGAAGAAGTGAACAAGAACAATGCCAAGGCTCTG
AGCACCTTGCCTCAGAAGATCCGAAAATACAACCGTGATTTGAGTCCCATATCACAAGCTACAAGCAG
AACCCCGAGCAGTCTGCCGATGAAGATGCTGAGAAAAATGAGGAGGATTCAGAAGCTCTTCAGATGAG
GATGAGGATGAGGACGGAGTCAGTGTGCAACTTTCTTGAAGAAGAAATCAGAAGCTCCTCTGGGGAG
AGTCGCAAGTTCCCTAAAAAGATGGATGATGAAGATGAGGACTCAGAAGATTCGGAAGATGATGAAGAC
TGGGACACAGGTTCCACATCTTCCGATTCGACTCAGAGGAGGAAGAAGGAAAACAAACCCGCTGGCC
TCAAGATTTCTTAAAAAGCACCCACCACAGATGAGGACAAGAAGGCAGCCGAGAAGAAACGGGAGGAC
AAAGCTAAGAAGAAGCACGACAGGAAATCCAAGCGCTGGATGAGGAGGAGGAGGACAATGAAGGCGGG
GAGTGGGAAAGGGTCCGGGGCGGAGTCCGTTGGTTAAGGAGAAGCCAAAAATGTTTGCCAAGGGAAT
GAGATCACCCATGCTGTTGTTATCAAGAAACTGAATGAGATCCTACAGGCACGAGGCAAGAAGGGAAT
GATCGTCTGCCAGATTGAGCTGCTGCAACTGCTGGTTCAGATTGCAGCGGAAAACAACCTGGGAGAG
GGCGTCATTGTCAAGATCAAGTTCAATATCATCGCCTCTCTATGACTACAACCCCAATCTGGCAACC
TACATGAAGCCAGAGATGTGGGGAAGTGCCTGGACTGCATCAATGAGCTGATGGATATCTGTTGCA
AATCCCAACATTTTTGTTGGAGAGAATATTCTGGAAGAGAGTGAGAACCTGCACAACGCTACCAGCCA
CTGCGTGTCCGTGGCTGCATCCTAACTCTGGTGAACGAATGGATGAAGAATTTACCAAAAATAATGCAA
AATACTGACCCTCACTCCCAAGAGTACGTGGAGCACTTGAAGGATGAGGCCAGGTGTGTGCCATCATC
GAGCGTGTGCAGCGCTACCTGGAGGAGAAGGGCACTACCGAGGAGGTCTGCCGATCTACCTGCTGCGC
ATCCTGCACACCTACTACAAGTTTGATTACAAGGCCCATCAGCGACAGCTGACCCCGCTGAGGGCTCC
TCAAAGTCTGAGCAAGACCAGGCAGAAAATGAGGGCGAGGACTCGGCTGTGTTGATGGAGAGACTGTGC
AAGTACATCTACCCAAGGACCCGACAGACCGGATCCGCACATGTGCCATCCTCTGCCACATCTACCAC
CATGCTCTGCACTCGCGTGGTACCAGGCCCGCAGCTCATGCTCATGAGCCACTTGAGGACAACATT
CAGCATGCAGACCCGCCAGTGCAGATCCTTTACAACCGCACCATGGTGCAGCTGGGCATCTGTGCCCTC
CGCAAGGCCTGACCAAGGACGCACACAACGCCCTGCTGGACATCCAGTCGAGTGGCCGAGCCAAGGAG
CTTCTGGGCCAGGGCTGCTGCTGCGCAGCCTGCAGGAGCGCAACCAGGAGCAGGAGAAGGTGGAGCGG
CGCCGTGAGTCCCTTCCACCTGCACATCAACCTGGAGCTGCTGGAGTGTGTCTACCTGGTGTCTGCC
ATGCTCCTGGAGATCCCTACATGGCCGCCATGAGAGCGATGCCCGCCGACGCATGATCAGCAAGCAG
TTCCACCACCAGCTGCGCGTGGCGGAGCGACAGCCCTGCTGGTCCCTGAGTCCATGCGGGAACAT
GTGGTCTGCTGCCCAAGGCCATGAAGATGGGTGACTGGAAGACCTGTACAGTTTTATCATCAATGAG
AAGATGAATGGGAAAGTGTGGGACCTTTTCCCGAGGCTGACAAAGTCCGCACCATGCTGGTTAGGAAG
ATCCAGGAAGAGTCACTGAGGACCTACCTCTTACCTACAGCAGTGTCTATGACTCCATCAGCATGGAG
ACGCTGTGAGACATGTTTGAGCTGGATCTGCCACTGTGCACTCCATCATCAGCAAAAATGATCATTAAAT
GAGGAGCTGATGGCTCCCTGGACCAGCCAACACAGACAGTGGTGTGATGCACCGCACTGAGCCCACTGCC
CAGCAGAACCTGGCTCTGCAGCTGGCCGAGAAGCTGGGCAGCCTGGTGGAGAACAACGAACGGGTGTTT
GACCACAAGCAGGGCACCTACGGGGGCTACTTCCGAGACCAGAAGGACGGCTACCGCAAAAACGAGGGC
TACATGCGCCGCGGTGGTACCGCCAGCAGCAGTCTCAGACGGCTAC
ACGGGTACGCGGCCGCTCGAGCAGAAACTCATCTCAGAAGAGGATCTGGCAGCAAATGATATCCTGGAT
TACAAGGATGACGACGATAAGGTTTAAACGGCCGGC
```

Protein Sequence: >Peptide sequence encoded by RC235026  
 Blue=ORF Red=Cloning site Green=Tag(s)

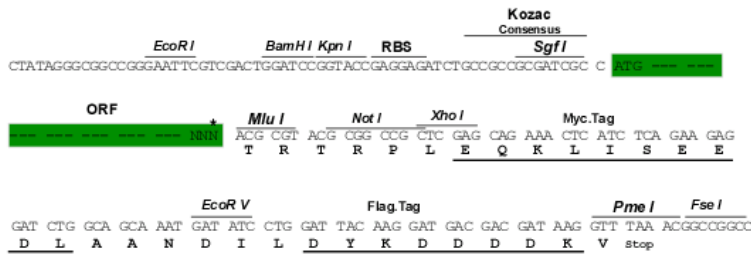
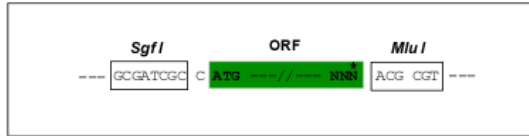
MSRFFTTGSDSESESSLGEEELVTKPVGGNYGKQPLLLSEDEEDTKRVVRSKDKRFEELTNLIRTI  
 AMKIRDVTKCLEEFELLGKAYGKAKSIVDKGVPRFYIRILADLEDYLNELWEDKEGKKMNKNAKAL  
 STLKQKIRKYNRDFESHITSYKQNPESADEAKNEEDSEGSSDEDEDGVSAAATFLKKKSEAPSGE  
 SRKFLKKMDEDEDESEDEDEDWDTGSTSSDSEEEEGKQTALASRFLKKAPTDEDEKKAEEKKRED  
 KAKKKHDKRKSRLDEEEEDNEGGEWVRRGGVPLVKEKPKMFAKGTETHAVVIKKLNEILQARGKKGT  
 DRAAQIELLQLLVQIAAENNLGEGVIVKIKFNIIASLYDYNPLATYMKPEMWGKCLDCINELMDILFA  
 NPNI FVGENILEESENLHNADQPLRVRGCILTLVERMDEEFTKIMQNTDPHSQEYVEHLKDEAQCVAII  
 ERVQRYLEEKGTTEEVCRIYLLRILHTYKFDYKAHQRLTPPEGSSKSEQDAENEGEDSAVLMERLC  
 KYIYAKDRDRI RTCAILCHIYHHLHSRWYQARDLMLMSHLQDNIQHADPPVQILYNRTMVQLGICAF  
 RQGLTKDAHNALLDIQSSGRAKELLGQGLLLRSLQERNQEKEKVERRRQVPFHLHINLELLECVYL VSA  
 MLLEIPYMAAHESDARRRMISKQFHHLRVGERQPLLGPPESMREHVVAASKAMKMGDWKCHSFIINE  
 KMNGKVDLFP EADKVR TMLVRKI QEESLRTYLFYSSVYDSISMETLSDMFELDLPTVHSIISKMIIN  
 EELMASLDQPTQT VVMHRTEPTAQNLALQLAEKLGSLVENNERVFDHKQGTGGYFRDQKDG YRKNEG  
 YMRRGGYRQQSQTAY  
 TRTRPLEQKLISEEDLAANDILDYKDDDDKV

Chromatograms: [https://cdn.origene.com/chromatograms/mk6162\\_b09.zip](https://cdn.origene.com/chromatograms/mk6162_b09.zip)

Restriction Sites: SgfI-MluI

Cloning Scheme:

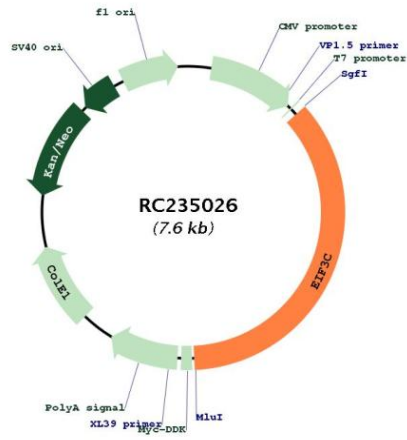
Cloning sites used for ORF Shuttling:



\* The last codon before the Stop codon of the ORF

<b>ACCN:</b>	NM_001267574
<b>ORF Size:</b>	2739 bp
<b>OTI Disclaimer:</b>	The molecular sequence of this clone aligns with the gene accession number as a point of reference only. However, individual transcript sequences of the same gene can differ through naturally occurring variations (e.g. polymorphisms), each with its own valid existence. This clone is substantially in agreement with the reference, but a complete review of all prevailing variants is recommended prior to use. <a href="#">More info</a>
<b>OTI Annotation:</b>	This clone was engineered to express the complete ORF with an expression tag. Expression varies depending on the nature of the gene.
<b>Components:</b>	The ORF clone is ion-exchange column purified and shipped in a 2D barcoded Matrix tube containing 10ug of transfection-ready, dried plasmid DNA (reconstitute with 100 ul of water).
<b>Reconstitution Method:</b>	<ol style="list-style-type: none"><li>1. Centrifuge at 5,000xg for 5min.</li><li>2. Carefully open the tube and add 100ul of sterile water to dissolve the DNA.</li><li>3. Close the tube and incubate for 10 minutes at room temperature.</li><li>4. Briefly vortex the tube and then do a quick spin (less than 5000xg) to concentrate the liquid at the bottom.</li><li>5. Store the suspended plasmid at -20°C. The DNA is stable for at least one year from date of shipping when stored at -20°C.</li></ol>
<b>RefSeq Size:</b>	3234 bp
<b>RefSeq ORF:</b>	2742 bp
<b>Locus ID:</b>	8663
<b>UniProt ID:</b>	<a href="#">Q99613</a>
<b>Cytogenetics:</b>	16p11.2
<b>Protein Families:</b>	Druggable Genome
<b>MW:</b>	105.3 kDa
<b>Gene Summary:</b>	Component of the eukaryotic translation initiation factor 3 (eIF-3) complex, which is required for several steps in the initiation of protein synthesis (PubMed:17581632, PubMed:25849773, PubMed:27462815). The eIF-3 complex associates with the 40S ribosome and facilitates the recruitment of eIF-1, eIF-1A, eIF-2:GTP:methionyl-tRNA <sub>i</sub> and eIF-5 to form the 43S pre-initiation complex (43S PIC). The eIF-3 complex stimulates mRNA recruitment to the 43S PIC and scanning of the mRNA for AUG recognition. The eIF-3 complex is also required for disassembly and recycling of post-termination ribosomal complexes and subsequently prevents premature joining of the 40S and 60S ribosomal subunits prior to initiation (PubMed:17581632). The eIF-3 complex specifically targets and initiates translation of a subset of mRNAs involved in cell proliferation, including cell cycling, differentiation and apoptosis, and uses different modes of RNA stem-loop binding to exert either translational activation or repression (PubMed:25849773).[UniProtKB/Swiss-Prot Function]

Product images:



Circular map for RC235026