

## Product datasheet for **RC234995**

### **NALP6 (NLRP6) (NM\_001276700) Human Tagged ORF Clone**

#### **Product data:**

Product Type:	Expression Plasmids
Product Name:	NALP6 (NLRP6) (NM_001276700) Human Tagged ORF Clone
Tag:	Myc-DDK
Symbol:	NALP6
Synonyms:	AVR; CLR11.4; NALP6; NAVR; NAVR/AVR; PAN3; PYPAF5
Mammalian Cell Selection:	Neomycin
Vector:	pCMV6-Entry (PS100001)
E. coli Selection:	Kanamycin (25 ug/mL)



[View online »](#)

**ORF Nucleotide  
Sequence:**

>RC234995 representing NM\_001276700  
 Red=Cloning site Blue=ORF Green=Tags(s)

TTTTGTAATACGACTCACTATAGGGCGGCCGGGAATTCGTCGACTGGATCCGGTACCGAGGAGATCTGCC  
 GCC**CGGATCGCC**

ATGGACCAGCCAGAGGCCCTGCTCCAGCACGGGGCCGCGCCTCGCGGTGGCCCGAGCTGCTCCTGG  
 CTGCGCTGGAGGAACTGAGCCAAGAGCAGCTGAAGCGCTTCCGCCACAAGCTGCGCGACGTGGGCCCGGA  
 CGGACGCAGCATCCCGTGGGGCGGCTGGAGCGCGGGACGCCGTGGACCTCGCGGAGCAGCTGGCCAG  
 TTCTACGGCCCGAGCCTGCCCTGGAGGTGGCCCGCAAGACCCTCAAGAGGGCGGACGCGCGCAGCTGG  
 CGGCGCAGCTCCAGGAGCGGGCTGCAGCGGCTCGGGCTCGGCTCCGGGACGCTGCTCTCCGTGCCGA  
 GTACAAGAAGAAGTACCGGGAGCACGTGCTGCAGCTGCACGCTCGGGTGAAGGAGAGGAACGCCCTCC  
 GTGAAGATCACCAAGCGCTTACCAAGCTGCTCATCGCGCCGAGAGCGCCGCCCGGAGGAGGCGATGG  
 GGCCCGCGGAAGAGCCTGAGCCGGGGCGCGCGGGCGCTCGGACACGCACACTTCAACCGCCTCTCCG  
 CCGCAGCAGGAGGGCCGGCGGCGCTGACCGTGGTGTGCAGGGCCCGCGGGCATCGCAAGACCATG  
 GCGGCCAAAAGATCCTGTACGACTGGCGGGCGGCAAGCTGTACCAGGGCCAGGTGGACTTCGCCTTCT  
 TCATGCCTGCGGCGAGCTGCTGGAGAGGCCGGGCACGCGCAGCCTGGGTGACCTGATCCTGGACAGTG  
 CCCCAGCCGCGCGCGCCGGTGCAGATGCTGGCCAGCCGACGCGGCTGCTTTCATCCTGGACGGC  
 GCGGACGAGCTGCCGGCGCTGGGGGGCCCGAGGCCGCGCCTGCACAGACCCCTTCGAGGCGCGGAGCG  
 GCGCGCGGGTGTAGGCGGGTGTGAGCAAGCGCTGCTGCCACGGCCCTCCTGTGGTACCACGCG  
 CGCCCGCCCGGGAGGCTGACGGCCGCTGTGTTCCCGCAGTGCGCCGAGGTGCAGCGCTTCTCC  
 GACAAGGACAAGAAGAAGTATTTCTACAAGTATTTCCGGGATGAGAGGAGGGCCGAGCGCCCTACCGCT  
 TCGTGAAGGAGAACGAGACGCTGTTCCGCTGTGCTTCCCTTCGTGCTGGATCGTGTGACCGT  
 GCTGCGCCAGCAGCTGGAGCTCGGTCCGGACCTGTCGCGCACGTCCAAGACCACACGTCAAGTACCTG  
 CTTTTATCACCAGCTTCTGAGCTCGGCTCCGGTAGCCGACGGGCCCGGTTGACGGGCGACTGCGCA  
 ATCTGTGCCGCTGGCCCGGAGGGCGTCTCGGACGCAGGGCGCAGTTTGCCGAGAAGGAACTGGAGCA  
 ACTGGAGCTTCGTGGCTCCAAAGTGCAGACGCTGTTTCTCAGCAAAAAGGAGCTGCCGGGCGTGTGGAG  
 ACAGAGGTCACCTACCAGTTCATCGACCAGAGCTTCCAGGAGTTCCTCGCGGCACTGTCTACCTGCTGG  
 AGGACGGCGGGGTGCCAGGACCGGGCTGGCGCGTGGGACACTCCTGCGTGGGACGCCAGCCGCA  
 CAGCCACTTGGTGTACACACGCGCTTCTCCTCGGACTGCTGAGCGCGGAGCGGATGCGCGACATCGAG  
 CGCCACTTCGGTGCATGGTTTCAGAGCGTGTGAAGCAGGAGGCCCTGCGGTGGTGCAGGGACAGGGAC  
 AGGGCTGCCCCGAGTGGCACCAGAGGTGACCGAGGGGGCCAAAAGGGCTCGAGGACACCGAAGAGCCAGA  
 GGAGGAGGAGGAGGAGAGGAGCCAACTACCCACTGGAGTTGCTGTACTGCCTGTACGAGACGCAGGAG  
 GACGCGTTTGTGCGCCAAGCCCTGTGCCGTTCCCGGAGCTGGCGCTGCAGCGAGTGCCTTCTGCCGA  
 TGGACGTGGCTGTTCTGAGTACTGCGTGAAGTGTGCCCTGCTGGACAGGCACTGCGGCTGATCAGCTG  
 CAGATTGGTTGCTGCGCAGGAGAAGAAGAAGAGCCTGGGGAAGCGGCTCCAGGCCAGCCTGGGTGGC  
 GGCAGTTCTCAAGGCACCACAAAACAAGTCCAGCCTCCCTTCTTATCCACTCTTTAGGCAATGACTG  
 ACCCACTGTGCCATCTGAGCAGCCTCACGCTGTCCACTGCAAACTCCCTGACGCGGTCTGCCGAGACCT  
 TTCTGAGGCCCTGAGGGCAGCCCCGCACTGACGGAGCTGGGCTCCTCCACAACAGGCTCAGTGAGGCG  
 GGACTGCGTATGCTGAGTGAGGGCCTAGCCTGGCCGAGTGCAGGGTGCAGACGGTACAGCTGCTGC  
 CTGACCCCGAGGAGGCTCCAGTACCTGGTGGGTATGCTTCGGCAGAGCCCTGCCCTGACCACCTGGA  
 TCTCAGCGGCTGCCAACTGCCCGCCCCATGGTACCTACCTGTGTGAGTCTGACGACCCAGGGATGC  
 GGCCTGCAGACCTCAGTCTGGCCTCTGTGGAGCTGAGCGAGCAGTCACTACAGGAGCTTCAAGGTGTGA  
 AGAGAGCAAAGCCGATCTGGTATCACACACCAGCGCTGGACGGCCACCCACAACCTCCCAAGGAACT  
 CATCTCGACCTC

AG**CGGACCG**ACGCGTACGCGGCCGCTCGAGCAGAACTCATCTCAGAAGAGGATCTGGCAGCAAATGATATCC  
 TGGATTACAAGGATGACGACGATAAGGTTTAA

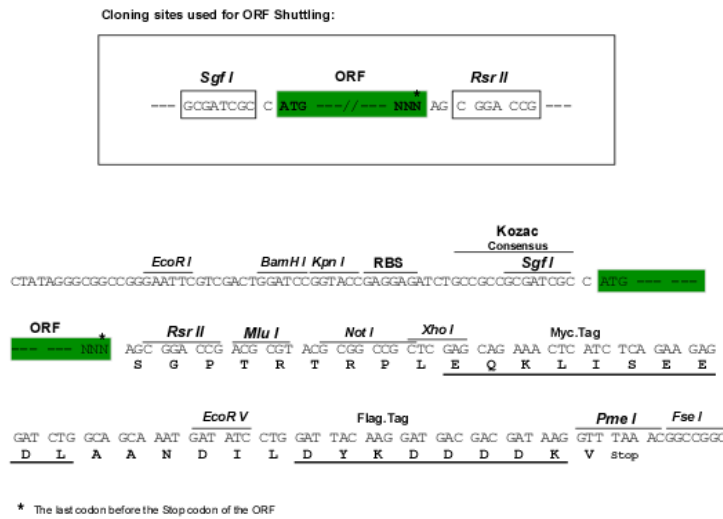
**Protein Sequence:** >RC234995 representing NM\_001276700  
 Red=Cloning site Green=Tags(s)

MDQPEAPCSSTGPRLAVARELLLALEELSQEQLKFRHKL RDVGP DGRSIPWGR LERADAVDLAEQLAQ  
 FYGPEPALEVARKTLKRADARDVAAQLQERRLQRLGLSGTLLSVSEYKKKYREHVLQLHARVKERNARS  
 VKITKRFTKLLIAPESAPEEAMGPAEEPEPGRARRSDTHTFNRLFRRDEEGRRPLTVVLQGPAGIGKTM  
 AAKKILYDWAAGKLYQGQVDFAFMPGCELLERPGTRSLADLILDQCPDRGAPVPQMLAQPQRLLFILDG  
 ADELPA LGGPEAAPCTDPFEAASGARVLGGLLSKALLPTALLLVTTTRAAAPGRLQGR L CSPQCAEVRGFS  
 DKDKKKYFYKYFRDERRAERAYRFVKENETL FALCFVFPVCWIVCTVLRQQLELGRDLSRTSKTTTSVYL  
 LFITSVLSAPVADGPR LQGDLRNL CRLAREGVLGRRAQFAEKELEQLELRGSKVQTLFLSKKELPGVLE  
 TEVTYQFIDQSFQEF LAALSYLLEDGGVPRTAAGGVGTL LRGDAQPHSHLVLTTRFLFGLLSAERMRIE  
 RHF GCMVSERVKQ EALRWVQGGQGGCPGVAPEVTEGAKLEDTEPEEEEEEGEENYPLELLYCLYETQE  
 DAFVRQALCRFPELALQVRVFCRMDVAVLSYCVRCCPAGQALRLISCR LVA AQEKKKSLGKRLQASLGG  
 GSSQGTTKQLPASLLHPLFQAMTDPLCHLSSLTL SHCKLPDAVCRDLSEALRAAPALTEGLLHNRLSEA  
 GLRMLSEGLAWPQCRVQTVRVQLPDPQRGLQYLVGMLRQSPALTTLDL SGCQLPAMPVTVLCAVLQHQC  
 GLQTL SLASVELSEQLQELQAVKRAKPDLVITHPALDGHPPPKELISTF

SGP TRTRPLEQKLI SEEDLAANDILDYKDDDDKV

**Restriction Sites:** SgfI-RsrII

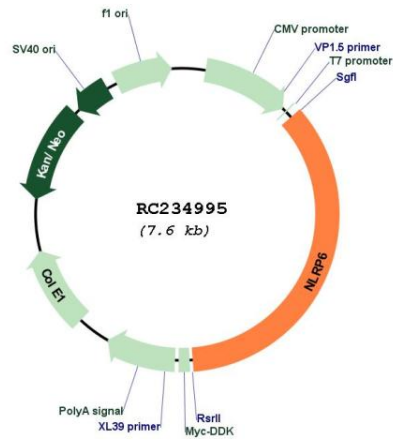
**Cloning Scheme:**



**ACCN:** NM\_001276700

<b>ORF Size:</b>	2673 bp
<b>OTI Disclaimer:</b>	The molecular sequence of this clone aligns with the gene accession number as a point of reference only. However, individual transcript sequences of the same gene can differ through naturally occurring variations (e.g. polymorphisms), each with its own valid existence. This clone is substantially in agreement with the reference, but a complete review of all prevailing variants is recommended prior to use. <a href="#">More info</a>
<b>OTI Annotation:</b>	This clone was engineered to express the complete ORF with an expression tag. Expression varies depending on the nature of the gene.
<b>Components:</b>	The ORF clone is ion-exchange column purified and shipped in a 2D barcoded Matrix tube containing 10ug of transfection-ready, dried plasmid DNA (reconstitute with 100 ul of water).
<b>Reconstitution Method:</b>	<ol style="list-style-type: none"><li>1. Centrifuge at 5,000xg for 5min.</li><li>2. Carefully open the tube and add 100ul of sterile water to dissolve the DNA.</li><li>3. Close the tube and incubate for 10 minutes at room temperature.</li><li>4. Briefly vortex the tube and then do a quick spin (less than 5000xg) to concentrate the liquid at the bottom.</li><li>5. Store the suspended plasmid at -20°C. The DNA is stable for at least one year from date of shipping when stored at -20°C.</li></ol>
<b>RefSeq:</b>	<a href="#">NM_001276700.2</a>
<b>RefSeq Size:</b>	2760 bp
<b>RefSeq ORF:</b>	2676 bp
<b>Locus ID:</b>	171389
<b>UniProt ID:</b>	<a href="#">P59044</a>
<b>Cytogenetics:</b>	11p15.5
<b>MW:</b>	99.1 kDa
<b>Gene Summary:</b>	The protein encoded by this gene binds arginine-vasopressin and may be involved in the arginine-vasopressin-mediated regulation of renal salt-water balance. The encoded protein also mediates inflammatory responses in the colon to allow recovery from intestinal epithelial damage and protects against tumorigenesis and the development of colitis. Finally, this protein can increase activation of NF-kappa-B, activation of CASP1 through interaction with ASC, and cAMP accumulation. Two transcript variants encoding different isoforms have been found for this gene. [provided by RefSeq, Feb 2013]

Product images:



Circular map for RC234995